

Product datasheet for **RC228529**

RED1 (ADARB1) (NM_001160230) Human Tagged ORF Clone

Product data:

Product Type:	Expression Plasmids
Product Name:	RED1 (ADARB1) (NM_001160230) Human Tagged ORF Clone
Tag:	Myc-DDK
Symbol:	RED1
Synonyms:	ADAR2; DRABA2; DRADA2; NEDHYMS; RED1
Mammalian Cell Selection:	Neomycin
Vector:	pCMV6-Entry (PS100001)
E. coli Selection:	Kanamycin (25 ug/mL)



[View online »](#)

ORF Nucleotide
Sequence:

>RC228529 representing NM_001160230
Red=Cloning site Blue=ORF Green=Tags(s)

TTTTGTAATACGACTCACTATAGGGCGGCCGGAATTCGTCGACTGGATCCGGTACCGAGGAGATCTGCC
GCC**CGGATCGCC**

ATGGATATAGAAGATGAAGAAAACATGAGTTCAGCAGCACTGATGTGAAGGAAAACCGCAATCTGGACA
ACGTGTCCCCAAGGATGGCAGCACACCTGGGCCCTGGCGAGGGCTCTCAGCTCTCCAATGGGGTGGTGG
TGGCCCCGGCAGAAAGCGGCCCTTGAGGAGGGCAGCAATGGCCACTCCAAGTACCGCTGAAGAAAAGG
AGGAAAACACCAGGGCCCGTCTCCCAAGAACGCCCTGATGCAGCTGAATGAGATCAAGCCTGGTTTGC
AGTACACACTCTGTCCCAGACTGGGCCGTGCACGCGCCTTTGTTTGTTCATGTCTGTGGAGGTGAATGG
CCAGGTTTTTGGGGCTCTGGTCCACAAAAGAAAAGGCAAACTCCATGCTGCTGAGAAGGCCCTTGAGG
TCTTTCGTTTCAGTTTCTAATGCCTCTGAGGCCACCTGGCCATGGGGAGGACCCTGTCTGTCAACACGG
ACTTCACATCTGACCAGGCCGACTTCCCTGACACGCTCTTCAATGGTTTTGAAACTCCTGACAAGGCCGA
GCCTCCCTTTTACGTGGGCTCCAATGGGGATGACTCCTCAGTCCAGCGGGGACCTCAGCTTGTCTGCT
TCCCCGGTGCCTGCCAGCCTAGCCAGCCTCCTCTCCCTGCTTACCACCATTCCACCCCGAGTGGGA
AGAATCCCGTGATGATCTTGAACGAAGTGCGCCAGGACTCAAGTATGACTTCTCTCCGAGAGCGGGGA
GAGCCATGCCAAGAGCTTCGTATGTCTGTGGTGGTGGTGGTCAAGTCTTTGAAGGCTCGGGGAGAAAAC
AAGAAGCTTGCCAAGGCCGGGCTGCGCAGTCTGCCCTGGCCGCATTTTAACTTGCACTTGGATCAGA
CGCCATCTCGCCAGCCTATCCAGTGAGGGTCTTCAGCTGCATTTACCGCAGGTTTTAGCTGACGCTGT
CTCACGCTGGTCTGGTAAGTTTGGTACCTGACCGACAACCTCTCTCCCTCACGCTCGCAGAAAA
GTGCTGGCTGGAGTCGTATGACAACAGGCACAGATGTTAAAGATGCCAAGGTGATAAGTGTCTACAG
GAACAAAATGTATTAATGGTGAATACATGAGTGATCGTGGCCTTGCAATTAATGACTGCCATGCAGAAAT
AATATCTCGGAGATCCTTGCTCAGATTTCTTTATACACAACCTGAGCTTTACTTAAATAACAAGATGAT
CAAAAAAGATCCATCTTTCAGAAATCAGAGCGAGGGGGTTTAGGCTGAAGGAGAATGTCCAGTTTCATC
TGTACATCAGCACCTCTCCCTGTGGAGATGCCAGAATCTTCTCACCACATGAGCCAATCCTGGAAGAACC
AGCAGATAGACACCCAAATCGTAAAGCAAGAGGACAGCTACGGACCAAAATAGAGTCTGGTGGGGGACG
ATTCCAGTGCCTCCAATGCGAGCATCAAACGTGGGACGGGGTGTGCAAGGGGAGCGGCTGCTCACCA
TGTCTGCAGTGACAAGATTGCACGCTGGAACGTGGTGGGCATCCAGGGATCCCTGCTCAGCATTTCGT
GGAGCCATTTACTTCTCGAGCATCATCTGGGACGCTTTACCACGGGGACCACCTTCCAGGGCCATG
TACCAGCGGATCTCCAACATAGAGGACCTGCCACCTCTACACCCTCAACAAGCCTTTGCTCAGTGGCA
TCAGCAATGCAGAAGCACGGCAGCCAGGGAAGGCCCCCAACTTCAAGTGTCAACTGGACGGTAGGCGACTC
CGCTATTGAGGTCAACGCCACGACTGGGAAGGATGAGCTGGGCCGCGCTCCCGCTGTGTAAGCAC
CGGTTGTACTGTCTGGATGCGTGTGCACGGCAAGGTTCCCTCCCACTTACTACGCTCCAAGATTACCA
AGCCCAACGTGTACCATGAGTCCAAGCTGGCGGCAAGGAGTACCAGGCCGCAAGGTACAC

AG**CGGACCG**ACGCGTACGCGGCCGCTCGAGCAGAAACTCATCTCAGAAGAGGATCTGGCAGCAAATGATATCC
TGGATTACAAGGATGACGACGATAAGGTTTAA

Reconstitution Method:

1. Centrifuge at 5,000xg for 5min.
2. Carefully open the tube and add 100ul of sterile water to dissolve the DNA.
3. Close the tube and incubate for 10 minutes at room temperature.
4. Briefly vortex the tube and then do a quick spin (less than 5000xg) to concentrate the liquid at the bottom.
5. Store the suspended plasmid at -20°C. The DNA is stable for at least one year from date of shipping when stored at -20°C.

RefSeq: [NM_001160230.2](#)

RefSeq ORF: 2025 bp

Locus ID: 104

UniProt ID: [P78563](#)

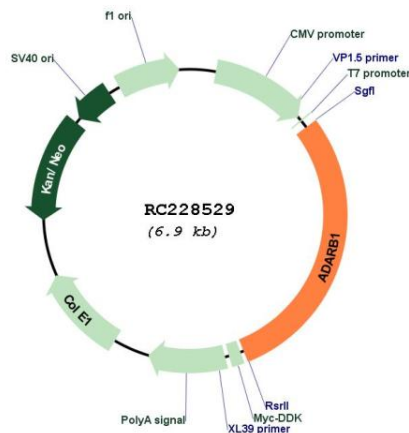
Cytogenetics: 21q22.3

Protein Families: Druggable Genome

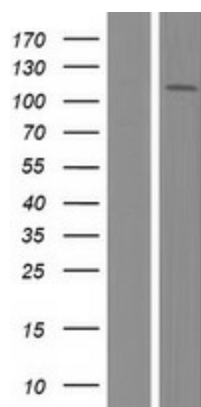
MW: 73.5 kDa

Gene Summary: This gene encodes the enzyme responsible for pre-mRNA editing of the glutamate receptor subunit B by site-specific deamination of adenosines. Studies in rat found that this enzyme acted on its own pre-mRNA molecules to convert an AA dinucleotide to an AI dinucleotide which resulted in a new splice site. Alternative splicing of this gene results in several transcript variants, some of which have been characterized by the presence or absence of an ALU cassette insert and a short or long C-terminal region. [provided by RefSeq, Jul 2008]

Product images:



Circular map for RC228529



Western blot validation of overexpression lysate (Cat# [LY431557]) using anti-DDK antibody (Cat# [TA50011-100]). Left: Cell lysates from untransfected HEK293T cells; Right: Cell lysates from HEK293T cells transfected with RC228529 using transfection reagent MegaTran 2.0 (Cat# [TT210002]).