

Product datasheet for **RC228528**

Palladin (PALLD) (NM_001166110) Human Tagged ORF Clone

Product data:

Product Type:	Expression Plasmids
Product Name:	Palladin (PALLD) (NM_001166110) Human Tagged ORF Clone
Tag:	Myc-DDK
Symbol:	Palladin
Synonyms:	CGI-151; CGI151; MYN; PNCA1; SIH002
Mammalian Cell Selection:	Neomycin
Vector:	pCMV6-Entry (PS100001)
E. coli Selection:	Kanamycin (25 ug/mL)



[View online »](#)

ORF Nucleotide Sequence:

>RC228528 representing NM_001166110
 Red=Cloning site Blue=ORF Green=Tags(s)

TTTTGTAATACGACTCACTATAGGGCGGCCGGGAATTCGTCGACTGGATCCGGTACCGAGGAGATCTGCC
 GCC**CGCATCGCC**

ATGAGCGCGCTGGCTCCCGCTCCGCCCCCGCCATGCAGTCTCCGGCTCCTTCAACTACGCGCGCCCA
 AGCAGTTCATCGCCGCGCAGAACCTCGGGCCCGGTGGGCCACGGCACGCCGGCCTCCAGCCCCAGCTC
 GTCAGCCTCCCGTCGCCCATGTCCCGACGCCGAGGCAGTTCGGCCGCGCCCCGTGCCGCCCTTCGCG
 CAGCCCTTCGGCGCTGAGCCCGAGGCCCGTGGGGCTCCTCCTCGCCGTCGCCCCCGCCCCGCCACCC
 CGGTCTTCAGCCCCACGGCTGCCCTCCCGGTGCCGACGTGTTCCACTGCCGCCGCCACCACCGCGCT
 CCCGAGCCCGGGACAGCGCTCCACTGCTGTCGCTGCCACCCGCTTCGGCCACAGCCAGACGCCCGCG
 GCCTTCTCAGCGCTCTGCTGCCCTCGCAGCCGCCCGCGCGCCGTCAACGCCCTGGGGTCCCAAGG
 GTGTCACCCCGCAGGATTTCAAAGAAGGCCAGTAGAACTGCTAGAATAGCCTCCGATGAGGAAATTC
 AGGCACAAAGGATGCTGTTATTCAGACCTGGAACGAAAACCTTCGCTTCAAGGAGACCTCTGAACAAT
 GGCAGCCGAGGTTAACATACGAAGAAAAGTGGCTCGTCGACTGCTAGGTGCTGACAGTCAACTGCT
 TTAATATTCAGGAGCCAGAAGAGAAAACAGCTAATCAGGAATACAAAGTCTCCAGCTGTGAACAGAGACT
 CATCAGTGAATAGAGTACAGGCTAGAAAAGTCTCCTGTGGATGAATCAGGTGATGAAGTTCAGTATGGA
 GATGTGCTGTGGAAAATGGAATGGCACCATCTTTGAGATGAAGCTGAAACATTACAAGATCTTTGAGG
 GAATGCCAGTAACTTTCACATGTAGAGTGGCTGGAATCCAAAGCCAAAGATCTATTGGTTTAAAGATGG
 GAAGCAGATCTCTCAAAGAGTGATCACTACACCATCAAAGAGATCTCGATGGGACCTGCTCCCTCCAT
 ACCACAGCCTCCACCCTAGATGATGATGGGAATTATAAATTATGGCTGCAAACCCTCAGGGCCGCATCA
 GTTGTACTGGACGGCTAATGGTACAGCTGTCAACCAAAGAGGTCGAAGTCCCCGGTCTCCCTCAGGCCA
 TCCTCATGTGAGAAGCCCTCGTTCTAGATCAAGGGACAGTGGAGACGAAAATGAACCAATTCAGGAGCGA
 TTCTTCAGACCTCACTTCTTGCAGGCTCCTGGAGATCTGACTGTTCAAGAAGAAAACCTCTGCAAGATGG
 ACTGCAAAGTCAGTGGGTACCAACCCAGATCTAAGCTGGCAACTAGATGGAAGCCCGTACGCCCTGA
 CAGTGCTCACAAGATGCTGGTGCCTGAGAACGGGGTCACTCTCTGATCATAGAGCCAGTACGTCACGT
 GATGCCGGCATCTACACATGTATAGCTACCAACCGAGCAGGACAGAACTCATTACGCTGGAGCTTGTGG
 TTGCTGCTAAAGAAGCACACAAACCCCTGTGTTTATTGAGAAGCTCCAAACACAGGAGTTGCTGATGG
 GTACCCAGTGGGCTGGAATGTCGTGTATTGGGAGTGCCACCACCTCAGATATTTTGAAGAAAGAAAAT
 GAATCACTCACTCACAGCACTGACCGAGTGAGCATGCACCAGGACAACCACGGCTACATCTGCCTGCTCA
 TTCAGGGAGCCACAAAAGAAGATGCTGGTGGTATACTGTGTGAGCAAGAAATGAAGCAGGATTGTGTC
 CTGTAAGTCCAGGCTGGACGTTTACACCAAGTGGCATCAGCAGTACAGAGCACCAGCCAAAAAAGTA
 CGGCCCTCAGCCAGTCGCTATGCAGCACTTTCCGACCAGGGACTAGACATCAAAGCAGCGTTCCAACCTG
 AGGCCAACCCATCTCACCTGACACTGAATACTGCCTTGGTAGAAAAGTGGAGACCTG

ACGCGTACGCGGCCGCTCGAGCAGAAAACCTCATCTCAGAAGAGGATCTGGCAGCAAATGATATCCTGGATT
 ACAAGGATGACGACGATAAGGTTTAA

Reconstitution Method:

1. Centrifuge at 5,000xg for 5min.
2. Carefully open the tube and add 100ul of sterile water to dissolve the DNA.
3. Close the tube and incubate for 10 minutes at room temperature.
4. Briefly vortex the tube and then do a quick spin (less than 5000xg) to concentrate the liquid at the bottom.
5. Store the suspended plasmid at -20°C. The DNA is stable for at least one year from date of shipping when stored at -20°C.

RefSeq: [NM_001166110.2](#)

RefSeq ORF: 2019 bp

Locus ID: 23022

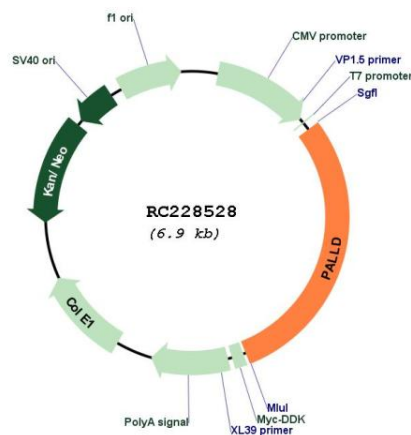
UniProt ID: [Q8WX93](#)

Cytogenetics: 4q32.3

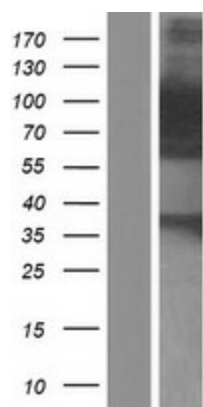
MW: 73.1 kDa

Gene Summary: This gene encodes a cytoskeletal protein that is required for organizing the actin cytoskeleton. The protein is a component of actin-containing microfilaments, and it is involved in the control of cell shape, adhesion, and contraction. Polymorphisms in this gene are associated with a susceptibility to pancreatic cancer type 1, and also with a risk for myocardial infarction. Alternative splicing results in multiple transcript variants. [provided by RefSeq, Oct 2009]

Product images:



Circular map for RC228528



Western blot validation of overexpression lysate (Cat# [LY431556]) using anti-DDK antibody (Cat# [TA50011-100]). Left: Cell lysates from untransfected HEK293T cells; Right: Cell lysates from HEK293T cells transfected with RC228528 using transfection reagent MegaTran 2.0 (Cat# [TT210002]).