

Product datasheet for **RC228526**

CHFR (NM_001161344) Human Tagged ORF Clone

Product data:

Product Type:	Expression Plasmids
Product Name:	CHFR (NM_001161344) Human Tagged ORF Clone
Tag:	Myc-DDK
Symbol:	CHFR
Synonyms:	RNF116; RNF196
Mammalian Cell Selection:	Neomycin
Vector:	pCMV6-Entry (PS100001)
E. coli Selection:	Kanamycin (25 ug/mL)



[View online »](#)

**ORF Nucleotide
Sequence:**

>RC228526 representing NM_001161344
 Red=Cloning site Blue=ORF Green=Tags(s)

TTTTGTAATACGACTCACTATAGGGCGGCCGGAATTCGTCGACTGGATCCGGTACCGAGGAGATCTGCC
 GCC**CGGATCGCC**

ATGGAGCGGCCGAGGAAGGCAAGCAGTCGCCGCCGCGAGCCCTGGGACGGCTCCTGCGTCTGGGCG
 CGGAGGAGGGCGAGCCGACGTCCTCCTGAGGAAGCGGGAGTGGACCATCGGGCGGAGACGAGGTTGCGA
 CCTTCTCCTCCAGCAATAAACTGGTCTCTGGAGATCACTGTAGAATTGTAGTGGATGAAAAATCAGT
 CAGGTGACACTGGAAGATACCAGCACCAGTGAACAGTGATTAACAAGCTGAAGGTTGTTAAGAAGCAGA
 CATGCCCTTACAGACTGGGGATGTCATCTACTTGGTGTACAGGAAGAATGAACCGGAACACAACGTGGC
 ATACCTCTATGAATCTTTAAGTAAAAGCAAGGCATGACACAAGAATCCTTTGAAGCTAACAAAGGAAAAAT
 GTGTTCCATGGGACCAAGATACCTCAGGTGCAGGTGCAGGGCGAGGGGCCGATCCCCGGTCCCTCCGT
 CGTCGCCCCCACTCAGGTGTGCTTTGAGGAACACAGCCATCAACATCGACGTCAGACCTTTCCCCAC
 AGCCTCGGCCTTCCACGGAGCCTTCTCCTGCAGGGCGAGAGCGTTCCAGTTGTGGGTCTGGGGGT
 GGTGGCATCTCCCTAAAGGAAGTGGTCCCTCTGTGGCAAGTGTGAAGTCTCCAGCTTTGCCTCAGCTC
 TCCCAGACAGAAAGACTGCGTCCTTTTCGTCGTTGGAACCCAGGATCAGGAGGATTTGGAGCCCGTGA
 GAAGAAAATGAGAGGAGATGGGACCTTGACCTGAACGGGCGAGTTGTTGGTGCACAACCCGCTAGAAAAT
 GCCCAAACCGTCCACGAGGACGTCAGAGCAGCGGCTGGGAAGCCAGACAAGATGGAGGAGACGCTGACAT
 GCATCATCTGCCAGGACCTGCTGCACGACTGCGTGAGTTTGCAGCCCTGCATGCACACGTTCTGCGCGGC
 TTGCTACTCGGGCTGGATGGAGCGCTCGTCCCTGTGCTACCTGCCGCTGTCCCGTGGAGCGGATCTGT
 AAAAACCATCCTCAACAACCTCGTGAAGCATACCTCATCCAGCATCCAGACAAGAGTCGAGGCGGATGAA
 AAGATGTGCAAGTATGGATGCCAGGAATAAAATCACTCAAGCATGCTGCAGCCAAAGTCAGGGCGGTC
 TTTTTCTGATGAAGAAGGAGTTTCAGAGGACCTGCTGGAGCTGTCAGACGTTGACAGTGAGTCTCAGAC
 ATTAGCCAGCCATACGTCGTGTGCCGGCAGTGTCTGAGTACAGAAGGCAGGCGGCGCAGCCTCCCCACT
 GCCCAGCACCCGAGGGCGAGCCAGGAGCCACAGGCCCTGGGGGATGCACCCTCCACGTCGCTCAGCCT
 GACGACAGCAGTCCAGGATTACGTGTGCCCTCTGCAAGGAAGCCACGCCCTGTGCACCTGCTGTTCCAG
 CCCATGCCCGACCGAGAGCGGAGCGGAGCAGGACCCGCGTGTGCCCTCAGCAGTGTGCGGTCTGCC
 TGCAGCCTTTCTGCCACCTGTACTGGGGCTGCACCCGACCGGCTGCTACGGCTGCCTGGCCCCGTTTTG
 TGAGCTCAACCTGGTGACAAGTGTCTGGACGGCGTGCTGAACAACAACAGCTACGAGTCAGACATCCTG
 AAGAATTACCTGGCAACCAGAGGTTTGACATGGAAAAACATGTTGACCGAGACCTCGTGGCTCTCCAGC
 GGGGAGTGTCTGCTGTCTGATTACAGAGTCACGGGAGACACCGTTCTGTGTTACTGCTGTGGCCTGCG
 CAGCTTCCGTGAGCTGACCTATCAGTATCGGCAGAACATTCTGTCTCCGAGTTGCCAGTGGCCGTAACA
 TCCCGTCTGACTGCTACTGGGGCCGTAAGTCCGCACCTCAGGTGAAAGCTCACCACGCCATGAAATTCA
 ATCATATCTGTGAACAGACAAGGTTCAAAAAC

ACGCGTACGCGGCCGCTCGAGCAGAACTCATCTCAGAAGAGGATCTGGCAGCAATGATATCCTGGATT
 ACAAGGATGACGACGATAAGGTTTAA

Reconstitution Method:

1. Centrifuge at 5,000xg for 5min.
2. Carefully open the tube and add 100ul of sterile water to dissolve the DNA.
3. Close the tube and incubate for 10 minutes at room temperature.
4. Briefly vortex the tube and then do a quick spin (less than 5000xg) to concentrate the liquid at the bottom.
5. Store the suspended plasmid at -20°C. The DNA is stable for at least one year from date of shipping when stored at -20°C.

Note: Plasmids are not sterile. For experiments where strict sterility is required, filtration with 0.22um filter is required.

RefSeq: [NM_001161344.1](#), [NP_001154816.1](#)

RefSeq ORF: 1995 bp

Locus ID: 55743

UniProt ID: [Q96EP1](#)

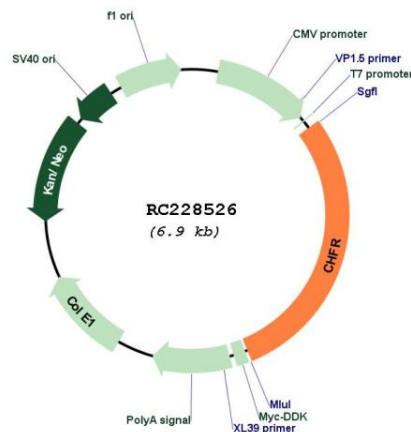
Cytogenetics: 12q24.33

Protein Families: Druggable Genome

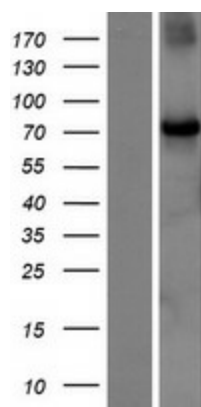
MW: 73.2 kDa

Gene Summary: This gene encodes an E3 ubiquitin-protein ligase required for the maintenance of the antepause checkpoint that regulates cell cycle entry into mitosis and, therefore, may play a key role in cell cycle progression and tumorigenesis. The encoded protein has an N-terminal forkhead-associated domain, a central RING-finger domain, and a cysteine-rich C-terminal region. Alternatively spliced transcript variants that encode different protein isoforms have been described. [provided by RefSeq, Mar 2014]

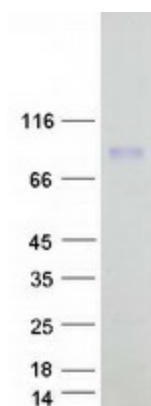
Product images:



Circular map for RC228526



Western blot validation of overexpression lysate (Cat# [LY431554]) using anti-DDK antibody (Cat# [TA50011-100]). Left: Cell lysates from untransfected HEK293T cells; Right: Cell lysates from HEK293T cells transfected with RC228526 using transfection reagent MegaTran 2.0 (Cat# [TT210002]).



Coomassie blue staining of purified CHFR protein (Cat# [TP328526]). The protein was produced from HEK293T cells transfected with CHFR cDNA clone (Cat# RC228526) using MegaTran 2.0 (Cat# [TT210002]).