

Product datasheet for RC228521L3

POU6F2 (NM_001166018) Human Tagged Lenti ORF Clone

Product data:

Product Type:	Expression Plasmids
Product Name:	POU6F2 (NM_001166018) Human Tagged Lenti ORF Clone
Tag:	Myc-DDK
Symbol:	POU6F2
Synonyms:	RPF-1; WT5; WTSL
Mammalian Cell Selection:	Puromycin
Vector:	pLenti-C-Myc-DDK-P2A-Puro (PS100092)
E. coli Selection:	Chloramphenicol (34 ug/mL)
ORF Nucleotide Sequence:	The ORF insert of this clone is exactly the same as(RC228521).
Restriction Sites:	SgfI-MluI
Cloning Scheme:	

Cloning sites used for ORF Shuttling:



* The last codon before the Stop codon of the ORF.

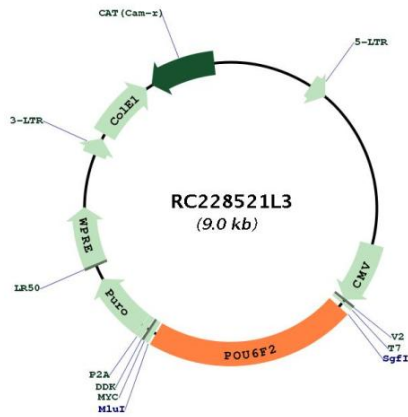
ACCN:	NM_001166018
ORF Size:	1965 bp



[View online »](#)

OTI Disclaimer:	The molecular sequence of this clone aligns with the gene accession number as a point of reference only. However, individual transcript sequences of the same gene can differ through naturally occurring variations (e.g. polymorphisms), each with its own valid existence. This clone is substantially in agreement with the reference, but a complete review of all prevailing variants is recommended prior to use. More info
OTI Annotation:	This clone was engineered to express the complete ORF with an expression tag. Expression varies depending on the nature of the gene.
Components:	The ORF clone is ion-exchange column purified and shipped in a 2D barcoded Matrix tube containing 10ug of transfection-ready, dried plasmid DNA (reconstitute with 100 ul of water).
Reconstitution Method:	<ol style="list-style-type: none">1. Centrifuge at 5,000xg for 5min.2. Carefully open the tube and add 100ul of sterile water to dissolve the DNA.3. Close the tube and incubate for 10 minutes at room temperature.4. Briefly vortex the tube and then do a quick spin (less than 5000xg) to concentrate the liquid at the bottom.5. Store the suspended plasmid at -20°C. The DNA is stable for at least one year from date of shipping when stored at -20°C.
RefSeq:	NM_001166018.1
RefSeq ORF:	1968 bp
Locus ID:	11281
UniProt ID:	P78424
Cytogenetics:	7p14.1
Protein Families:	Transcription Factors
MW:	69.1 kDa
Gene Summary:	This gene encodes a member of the POU protein family characterized by the presence of a bipartite DNA binding domain, consisting of a POU-specific domain and a homeodomain, separated by a variable polylinker. The DNA binding domain may bind to DNA as monomers or as homo- and/or heterodimers, in a sequence-specific manner. The POU family members are transcriptional regulators, many of which are known to control cell type-specific differentiation pathways. This gene is a tumor suppressor involved in Wilms tumor (WT) predisposition. Alternatively spliced transcript variants encoding distinct isoforms have been found for this gene.[provided by RefSeq, Oct 2009]

Product images:



Circular map for RC228521L3