

Product datasheet for **RC228521**

POU6F2 (NM_001166018) Human Tagged ORF Clone

Product data:

Product Type:	Expression Plasmids
Product Name:	POU6F2 (NM_001166018) Human Tagged ORF Clone
Tag:	Myc-DDK
Symbol:	POU6F2
Synonyms:	RPF-1; WT5; WTSL
Mammalian Cell Selection:	Neomycin
Vector:	pCMV6-Entry (PS100001)
E. coli Selection:	Kanamycin (25 ug/mL)



[View online »](#)

ORF Nucleotide
Sequence:

>RC228521 representing NM_001166018
Red=Cloning site Blue=ORF Green=Tags(s)

TTTTGTAATACGACTCACTATAGGGCGGCCGGAATTCGTGACTGGATCCGGTACCGAGGAGATCTGCC
GCCGCGATCGCC

ATGAGTGTCTTCTTTCAGGATCCAATGATAGCTGGACAAGTCAGTAAGCCCTTGCTGTCAGTGCGGAGTG
AAATGAATGCGGAGTTGAGAGGTGAGGACAAGGCTGCTACTTCAGACAGCGAGCTGAATGAGCCCCGCT
TGCGCCTGTGGAATCAAATGACAGCGAGGACACTCCCAGCAAGCTCTTCGGGGCTAGAGGAAACCCAGCA
TTATCAGACCCAGGCACTCCTGACCAACACCAGGCCAGTCAGACCCACCCCATTTCCAGTTGGGCCAC
AGCCACTTCTGACGGCACAGCAGTTAGCTTCTGCTGTGGCCGGCGTGATGCCGGGAGGCCCCAGCCCT
CAACCAGCCAATCCTCATTCCCTTCAACATGGCGGGACAGCTAGGAGGCCAGCAAGGACTGGTTCTCACA
CTGCCAACAGCGAATCTACCAACATCCAAGGGCTGGTGGCAGCAGCTGCAGCCGGAGGCATTATGACTC
TGCCACTGCAAAATCTACAAGCTACCTCATCCCTGAACCTCCAGCTCCAGCAGCTCCAGCTCCAGCTCCA
GCAGCAGCAGCAGCAGCAGCAGCAGCAGCTCCCCGTC AACCAACCAGCACCCGCAACCAGCCCCACAG
GCGCCCTCGCAGTCCCAGCAGCAGCCGCTGCAGCCCACCCACCCAGCAGCCACCCCGCTCTCAGC
AGCCGCCAGCTCCTACATCTCAGCTGCAACAGGCGCTCAGCCCCAGCAGCACCAACCCCACTCCCCTC
CCAGAACCAGAACCAACCATCTCCAACCCAGCAGAGCTCCAGCCCCCGAGAAACCTAGTCAGTCTCCA
GGCATGGCCTGCCTTACCCTCACGCCACCAATCCTCTACAGCTGGTTAATAATCCACTAGCAAGTC
AGGCTGCAGCGGCTGCAGCAGCCATGAGCTCCATAGCAAGCTCACAGGCCCTTGGCAATGCCCTCTCCAG
TCTTCAGGGGTCACAGGTCAACTAGTTACTAATGCACAAGGACAGATTATCGGGACCTTCCACTGATG
CCTAATCCAGGGCCATCGAGCCAAGCAGCAAGCGGCACTCAGGGCTTGAAGTGCAGCCAATCACCCCC
AGCTCCTCACAACGCCAGGGCCAGATCATCGCCACAGTCATTGGGAACCAGATCCTGCCGTGATCAA
CACCCAGGGCATCAGCTGTACCCATCAAGCCCGGCCAGCAGCTCCACCAACCCCTCCAGACGTCAAGT
GGTCAAGCAGCCTCCCAAGGCAACCTTCTGCACCTGGCTCACAGCCAAGCATCCATGTCTCAAAGTCCCG
TCCGGCAGGCTTCTTCTTCTCCTCATCCTCCTTCTTCTCAGCTTTGAGCGTGGGCCAGTTAGTCAG
CAATCCTCAAACGGCAGCGGGTGAAGTGGATGGGGTAACTGGAGGAGATCCGAGAATTTGCCAAAGCT
TTTAAATCCGGCGCTGTCCCTTGGCCTGACCCAGACTCAGGTGGGACAGGCTCTCAGTGCTACAGAGG
GCCCGCGTACAGCCAGTCGGCCATCTGCAGGTTTAAAAGCTGGACATCACCCCTAAAAGTGCCAGAA
GATCAAGCCGGTCTTGAGCGGTGGATGGCTGAGGCTGAGGCCCGCCATCGAGCAGGTATGCAGAACCTG
ACCGAGTTTATCGGGAGTGAACCATCAAAAAGCGCAAGCGGCGCACCTCCTTACACCCAGGCCCTTG
AGATCCTCAATGCCCACTTTGAGAAGAACACACCCCTTCTGGCAGGAAATGACCGAAATTGCTGAGAA
GCTGAACTATGACCGAGAAGTAGTTAGAGTTTGGTTCTGCAATAAGAGGCAAGCCCTGAAGAACAATT
AAACGCTTAAAACAGCACGAGCCGGCCACGGCAGTCCCTTTGGAGCCCTTAACAGACTCTCTGGAAGAAA
ACTCC

ACGCGTACGCGGCCGCTCGAGCAGAACTCATCTCAGAAGAGGATCTGGCAGCAATGATATCCTGGATT
ACAAGGATGACGACGATAAGGTTTAA

Protein Sequence: >RC228521 representing NM_001166018
Red=Cloning site Green=Tags(s)

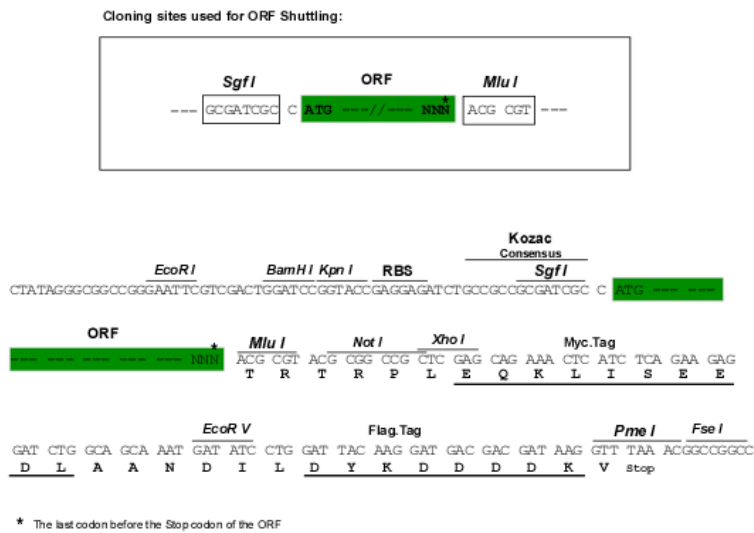
```
MSALLQDPMIAGQVSKPLL SVRSEMNAELRGEDKAATSDSELNEPLLAPVESNDS EDTPSKLF GARGNPA
LSDPGTPDQH QASQTHPPFPVGPQPLL TAQQLASAVAGVMPGGPPALNQPILIPFNMAGQLGGQQGLVLT
LPTANL TNIQGL VAAAAAGGIMTLPLQNLQATSSLNSQLQQLQLLQOQQOQQOQQPPPSTNQHPQFAPQ
APSQSQOQPLQPTPPQQPPPASQPPAPTSQLQQAPQPQQHQPHSHSQNQNPSPPTQQSSPPQKPSQSP
GHGLPSPLTPPNPLQLVNNPLASQAAAAAAMSSIASSQAFGNALSSLQGVGTGQLVTNAQQQIIGTIPLM
PNPGPSSQAASGTQGLQVQPI TPQLL TNAQQQIIATVIGNQILPVINTQGITLSP IKPGQQLHQPSQTSV
GQAASQGNLLHLAHSQASMSQSPV RQASSSSSSSSSSSAL SVGQLVSNPQTAAAGEVDGVNLEEIREFAKA
FKIRRLSLGLTQTQVGQAL SATEGPAYSSQAICRFEKLDITPKSAQKIKPVLERWMAEAEARHRAGMQNL
TEFIGSEPSKKRRRTSFTPQALEILNAHFEKNTHPSGQEMTEIAEKLNYDREVVRVWFCNKRQALKNTI
KRLKQHEPATAVPLEPLTDSLEENS
```

TRTRPLEQKLISEEDLANDILDYKDDDDKV

Chromatograms: https://cdn.origene.com/chromatograms/mk8038_c06.zip

Restriction Sites: SgfI-MluI

Cloning Scheme:



ACCN: NM_001166018

ORF Size: 1965 bp

OTI Disclaimer: The molecular sequence of this clone aligns with the gene accession number as a point of reference only. However, individual transcript sequences of the same gene can differ through naturally occurring variations (e.g. polymorphisms), each with its own valid existence. This clone is substantially in agreement with the reference, but a complete review of all prevailing variants is recommended prior to use. [More info](#)

OTI Annotation: This clone was engineered to express the complete ORF with an expression tag. Expression varies depending on the nature of the gene.

Components: The ORF clone is ion-exchange column purified and shipped in a 2D barcoded Matrix tube containing 10ug of transfection-ready, dried plasmid DNA (reconstitute with 100 ul of water).

Reconstitution Method:

1. Centrifuge at 5,000xg for 5min.
2. Carefully open the tube and add 100ul of sterile water to dissolve the DNA.
3. Close the tube and incubate for 10 minutes at room temperature.
4. Briefly vortex the tube and then do a quick spin (less than 5000xg) to concentrate the liquid at the bottom.
5. Store the suspended plasmid at -20°C. The DNA is stable for at least one year from date of shipping when stored at -20°C.

RefSeq: [NM_001166018.2](#)

RefSeq ORF: 1968 bp

Locus ID: 11281

UniProt ID: [P78424](#)

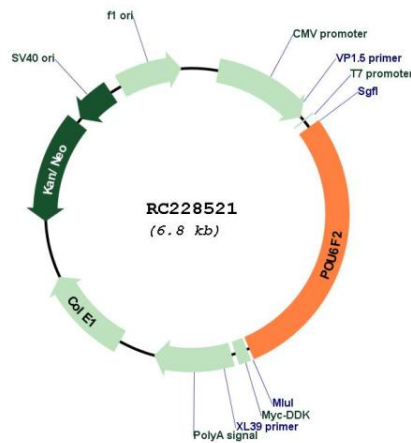
Cytogenetics: 7p14.1

Protein Families: Transcription Factors

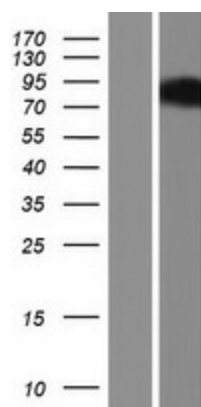
MW: 69.1 kDa

Gene Summary: This gene encodes a member of the POU protein family characterized by the presence of a bipartite DNA binding domain, consisting of a POU-specific domain and a homeodomain, separated by a variable polylinker. The DNA binding domain may bind to DNA as monomers or as homo- and/or heterodimers, in a sequence-specific manner. The POU family members are transcriptional regulators, many of which are known to control cell type-specific differentiation pathways. This gene is a tumor suppressor involved in Wilms tumor (WT) predisposition. Alternatively spliced transcript variants encoding distinct isoforms have been found for this gene.[provided by RefSeq, Oct 2009]

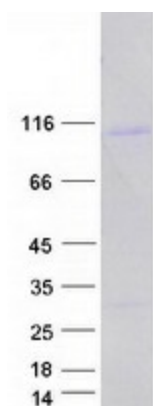
Product images:



Circular map for RC228521



Western blot validation of overexpression lysate (Cat# [LY431549]) using anti-DDK antibody (Cat# [TA50011-100]). Left: Cell lysates from untransfected HEK293T cells; Right: Cell lysates from HEK293T cells transfected with RC228521 using transfection reagent MegaTran 2.0 (Cat# [TT210002]).



Coomassie blue staining of purified POU6F2 protein (Cat# [TP328521]). The protein was produced from HEK293T cells transfected with POU6F2 cDNA clone (Cat# RC228521) using MegaTran 2.0 (Cat# [TT210002]).