

Product datasheet for **RC228514**

SLC13A2 (NM_001145975) Human Tagged ORF Clone

Product data:

Product Type:	Expression Plasmids
Product Name:	SLC13A2 (NM_001145975) Human Tagged ORF Clone
Tag:	Myc-DDK
Symbol:	SLC13A2
Synonyms:	NaCT; NaDC-1; NADC1; SDCT1
Mammalian Cell Selection:	Neomycin
Vector:	pCMV6-Entry (PS100001)
E. coli Selection:	Kanamycin (25 ug/mL)



[View online »](#)

ORF Nucleotide
Sequence:

>RC228514 representing NM_001145975
Red=Cloning site Blue=ORF Green=Tags(s)

TTTTGTAATACGACTCACTATAGGGCGGCCGGAATTCGTCGACTGGATCCGGTACCGAGGAGATCTGCC
GCC**CGGATCGCC**

ATGGCCACCTGCTGGCAGGCCCTGTGGCCTATCGCTCCTACCTGATCGTGTTCCTCGTGCCATTCTCC
TGCTGCCTCTGCCATCCTCGTCCCAGTAAGGAGGCCTACTGCGCGTATGCCATCATCCTCATGGCGCT
CTTCTGGTGCCTGAGGCCCTGCCCTGGCCGTAAGTCCCTCTTCCCCTTAATCCTGTTCCCTATGATG
GGCATCGTGGATGCCTCTGAGATCATTAGAGACCATTCCATCCAGTTTCGAGAGCCCAGGGGAATGCC
AGTCTGTGGGAATGTCAGTGACTGCATCCATAACCTCGGGGGCACCGTGGGAGACTCCAGGGTCTTCCC
GCCGCTCAGCCATGTCTCACCTGCCAGGTTGCCGTCGAGTATCTTAAGGACTCCAACCTCCTGTTCTTC
GGGGGGCTGCTGGTGGCCATCGCGGTGGAACACTGGAACCTGCATAAACGCATCGCCCTCCGTGTCTCC
TCATCGTTGGGGTGGCCCTGCCCGCTAATCCTGGGCTTCATGCTGGTACAGGCCTTCTGTCCATGTG
GATCAGCAACACGGCCACCTCAGCCATGATGGTGGCCATCGCACATGCCGTCCTGGACCAGCTGCACAGC
TCGCAAGCCAGCAGCAAGTTCGAGGAGGGCAGCAACAACCCACCTTCGAGCTCCAGGAACCAAGTCCCC
AGAAGGAGGTGACCAAGCTTGATAATGGGCAGGCCCTCCCTGTCACGTCCTGCTTTCGGAGGGGAGGGC
ACATCTCAGCCAGAAGCATCTCCACCTCACCCAGTGCATGAGCCTGTGCGTGTGCTACTCCGCCAGCATC
GGGGGCATCGCCACGCTGACTGGCACCCACCCAACTGGTGTGCAAGGCCAGATCAACTCGCTCTTCC
CCAAAACGGCAACGTGGTGAATTCGCTCCTGGTTCAGCTTCGCTTCCCCACCATGGTCATCTTGCT
GCTGCTGGCCTGGTGTGGCTGCAGATCCTCTTCTGGGCTTCAACTCCGGAAGAACTTTGGCATTGGG
GAAAAGATGCAGGAGCAACAGCAGGCAGCCTACTGCGTCATCCAGACCGAGCACAGGCTGCTGGCCCCA
TGACCTTTGCAGAAAAGGCCATCAGCATCCTATTGTCATCCTGGTGTCTGCTCTGGTTACCCGGGAGCC
GGGCTTTTTTCTGGCTGGGGCAATTTGGCTTTTCCCAATGCCAAGGGGGAGAGCATGGTGTCCGATGGG
ACAGTGGCCATCTTCATCGGCATAATTATGTTTCATCATAACCTCCAAGTTCAGGGCTGACCCAGGACC
CAGAAAACCCAGGGAAGCTGAAGGCCCTCTTGGCCTCCTCGACTGGAAGACGGTGAACCAGAAGATGCC
GTGGAATATCGTGTATTGCTGGTGGTGGCTATGCCCTGGCCAAGGGCAGTGAAGCGATCGGGCCTGTCA
GAGTGGCTGGGAAACAAGCTGACCCACTGCAGAGTGTGCCAGCTCCAGCCATTGCCATCATCCTCTCCC
TCCTGGTGGCCACCTTACCGAGTGCCTAGCAACGTGGCCACCACTACGATCTTCTGCCATCCTAGC
CTCCATGGCCAGGCCATCTGCCTCCACCCTCTACGTCATGCTCCCTGCACTCTGGCCACCTCCCTG
GCCTTCATGTTGCTGTGGCCACCCGCCAATGCCATCGTCTTCTCTTTCGGGGACCTCAAAGTGTGG
ATATGGCCCGGGCAGGATTCCTCCTCAACATCATTGGAGTCTGATCATCGCACTGGCCATCAACAGCTG
GGGCATCCCCCTTTCAGCCTGCACTCTTCCCCTCCTGGGCACAGTCCAACACCACAGCCAGTGCCTG
CCAAGCCTGGCCAACACCACCACCAAGCCCC

ACGCGTACGCGGCCGCTCGAGCAGAACTCATCTCAGAAGAGGATCTGGCAGCAAATGATATCCTGGATT
ACAAGGATGACGACGATAAGGTTTAA

Reconstitution Method:

1. Centrifuge at 5,000xg for 5min.
2. Carefully open the tube and add 100ul of sterile water to dissolve the DNA.
3. Close the tube and incubate for 10 minutes at room temperature.
4. Briefly vortex the tube and then do a quick spin (less than 5000xg) to concentrate the liquid at the bottom.
5. Store the suspended plasmid at -20°C. The DNA is stable for at least one year from date of shipping when stored at -20°C.

RefSeq: [NM_001145975.2](#)

RefSeq ORF: 1926 bp

Locus ID: 9058

UniProt ID: [Q13183](#)

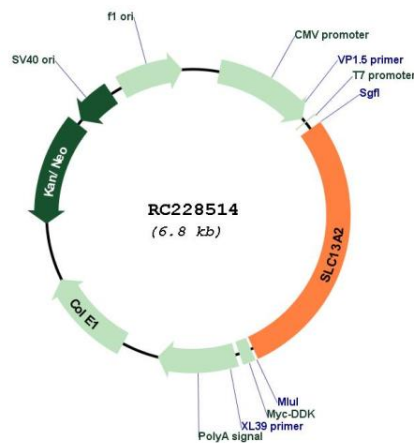
Cytogenetics: 17q11.2

Protein Families: Transmembrane

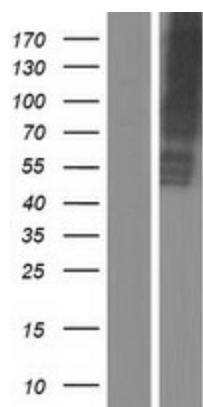
MW: 69.3 kDa

Gene Summary: The protein encoded by this gene is a sodium-coupled citrate transporter that is regulated by the chaperone activity of cyclophilin b. The encoded protein may play a role in the formation of kidney stones. [provided by RefSeq, Oct 2016]

Product images:



Circular map for RC228514



Western blot validation of overexpression lysate (Cat# [LY431542]) using anti-DDK antibody (Cat# [TA50011-100]). Left: Cell lysates from untransfected HEK293T cells; Right: Cell lysates from HEK293T cells transfected with RC228514 using transfection reagent MegaTran 2.0 (Cat# [TT210002]).