

## Product datasheet for **RC228512**

### **RASGRP 4 (RASGRP4) (NM\_001146205) Human Tagged ORF Clone**

#### **Product data:**

Product Type:	Expression Plasmids
Product Name:	RASGRP 4 (RASGRP4) (NM_001146205) Human Tagged ORF Clone
Tag:	Myc-DDK
Symbol:	RASGRP 4
Mammalian Cell Selection:	Neomycin
Vector:	pCMV6-Entry (PS100001)
E. coli Selection:	Kanamycin (25 ug/mL)



[View online »](#)

**ORF Nucleotide  
Sequence:**

>RC228512 representing NM\_001146205  
 Red=Cloning site Blue=ORF Green=Tags(s)

TTTTGTAATACGACTCACTATAGGGCGGCCGGAATTCGTCGACTGGATCCGGTACCGAGGAGATCTGCC  
 GCC**CGGATCGCC**

ATGAACAGAAAAGACAGTAAGAGGAAGTCCCACCAGGAATGCACCGAAAAATAGGAGGGCGAGGCCGGC  
 CCCGCCAAGTGCGCCGCCACAAGACATGCCCCAGCCCTCGGAAATCAGCAAGGTCATGGCTTCCATGAA  
 CCTGGGCCTGCTGAGTGAGGGCGGCTGCAGCGAAGATGAGCTGCTGGAGAAATGCATCCAGTCTTCGAT  
 TCAGCTGGCAGCCTGTGCCACGAGGACCACATGCTCAACATGGTGTGGCCATGCACAGCTGGGTGCTGC  
 CGTCCGCCGACCTGGCTGCCCGCTGCTGACCTCATACCAGAAGGCCACAGGGGACACCCAGGAGCTGAG  
 ACGGCTGCAGATCTGTCACCTGGTCAGGTAAGTGGCTGATGCGACACCCTGAGGTGATGCACCAGGATCCC  
 CAGCTAGAAGAAGTCATAGGTCGTTTCTGGCCACCGTGGCCCGGAGGGCAACTCAGCCCAGAGAAGAC  
 TGGGAGACTCTTCTGACCTCTGAGCCCTGGTGGCCCTGGCCCCCACTCCCAATGAGCAGCCCAGGCCCT  
 GGGCAAAAAGCGCAAAGTGTCTTGGCTTTTCGACCACTTGAGAGCGGGGAGCTGGCTCAGCACCTCACC  
 TACCTGGAGTTCGGTCCCTCCAGGCTATCACGGTGTGGTGTGAGCCCTCCCGGGCCCTACAGCGTG  
 CACAGGTGCTGGACAAGTTCATTACGTGGCACAGAGGCTCCACCAGCTGCAGAATTTCAACACGCTGAT  
 GGCAGTACAGGGGGCTGTGTACAGTGCCATCTCCAGACTCAAGGACTCCCATGCCACCTGAGCCCT  
 GACAGCACCAAGGCCCTCCTGGAGCTCACTGAGCTCCTTGCCCTCCACAACAACACGCCCCTACCGCC  
 GCACCTGGGCTGGCTGCGCGGGTTTCCGGCTGCCTGTACTGGCGTGCACCTCAAGGACCTGGTGTCCCT  
 GCATGAGGCACAGCCCGACAGGTGCTGACGGCCGCTGCACCTACCAAGCTGAACAACCTCTACCTG  
 CGGCTGCAGGAGCTGGTGGCCCTCCAAGGGCAGCATCCACCCTGCAGCGCAATGAGGATCTGCTGCACC  
 TGCTCAGCTCTCCCTGGACCTTTCTACACGGAAGACGAGATCTATGAGCTTTCTATGCCCGGGAGCC  
 GGGTTGTCCCAAGAGCCTGCCACCCTCCCTTCAATGCACCTCTGGTGGTGGAGTGGGCCCTGGTGTG  
 ACACCCAAGCCGACAGGTCACACTGGTTCGGCATGTGGAGCAGCTGGTGGAGTCTGTGTTCAAGAATT  
 ATGACCTGAAGGCCGAGGAACAATCTCTCAGGAGGACTTTGAGCGACTCTCGGGCAATTTTCCCTTCGC  
 CTGCCATGGGCTTCAACCCACCCACGCCAGGGGAGAGGATCCTTCAGCAGAGAGGAGCTGACAGGGTAC  
 CTGCTCCGGGCCAGGCCATCTGCTCCAAGTTGGGCTGGCTTCTGACACCTTCCATGAGGTACCT  
 TCCGAAAGCCTACCTTCTGCGACAGCTGCAGTGGCTTCTCTGGGGTGTACCAAGCAAGGCTACCGCTG  
 TCGGGAGTGGGGCTGTGTTGCCACAAACTGCAGAGACCAGGTGAAGGTAGAATGTAAGAAGAGGCCA  
 GGGCCAAGGGGATGCAGGACCCCGGAGCTCCTGTCCATCCACACCAGCTCCCATGCCAGCTGTG  
 GCTCCGAGGAAAATCACTCCTACACGCTATCCCTGGAGCCTGAGACTGGGTGCCAGCTTCGCCATGCCTG  
 GACCCAGACTGAATCCCCACACCCTTCTGGGAAACAGATACGGTCCCCTGCCCGGTGATGGACCCACCA  
 TCAACTGCATCCTCAAGCTGGATTCC

**ACGCGT**ACGCGGCCGCTCGAGCAGAACTCATCTCAGAAGAGGATCTGGCAGCAATGATATCCTGGATT  
 ACAAGGATGACGACGATAAGGTTTAA

**Protein Sequence:** >RC228512 representing NM\_001146205  
Red=Cloning site Green=Tags(s)

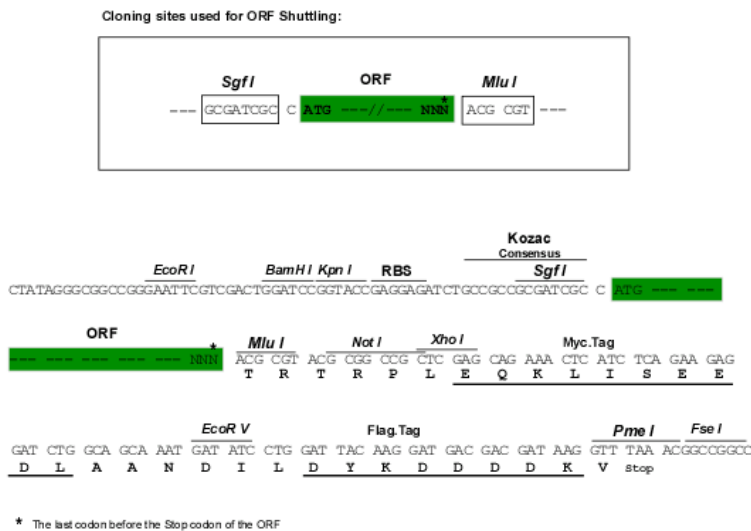
```
MNRKDSKRKSHQECTGKIGGRGRPRQVRRHKTCPSPREISKVMASMNLLGGLSEGGCSEDELLEKCIQSF
SAGSLCHEDHMLNMVLAHMSWVLPADLAARLLTSYQKATGDTQELRRLQICHLVRYWLMRHPEVMHODP
QLEEVIGRFWATVAREGNSAQRRLGDSSDLLSPGGPGPPLPMSSPGLGKKRKVSLDFDHLETGELAQHLT
YLEFRSFQAITVMVLSRPGPLQRAQVLDFKFIHVAQRLHQLQNFNTLMAVTGGLCHSAISRKDSHAHLS
DSTKALLELELLASHNNYARYRRTWAGCAGFRLPVLGVHLKDLVSLHEAQPDRLLPDGRLHLPKLNLYL
RLQELVALQGQHPPCSANEDLLHLLTSLDLFYTEDEIYELSYAREPRCPKSLPPSPFNAPLVVEWAPGV
TPKPDRVTLGRHVEQLVESVFKNYDPEGRGTISQEDFERLSGNFPFACHGLHPPPRQGRGSFSREELTGY
LLRASAICSKLGLAFLHTFHEVTFRKPTFCDCSCSGFLWGVTKQGYRCREGLCCHKHCRDQVKVECKKRP
GAKGDAGPPGAPVSTPAPHASCGSEENHSYTLSEPETGCQLRHAWTQTESPHPSWETDTPVCPVMDPP
STASSKLDS
```

TRTRPLEQKLISEEDLAANDILDYKDDDDKV

**Chromatograms:** [https://cdn.origene.com/chromatograms/mk8071\\_a05.zip](https://cdn.origene.com/chromatograms/mk8071_a05.zip)

**Restriction Sites:** SgfI-MluI

**Cloning Scheme:**



**ACCN:** NM\_001146205

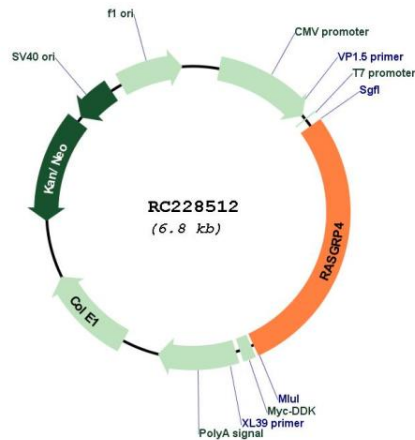
**ORF Size:** 1917 bp

**OTI Disclaimer:** The molecular sequence of this clone aligns with the gene accession number as a point of reference only. However, individual transcript sequences of the same gene can differ through naturally occurring variations (e.g. polymorphisms), each with its own valid existence. This clone is substantially in agreement with the reference, but a complete review of all prevailing variants is recommended prior to use. [More info](#)

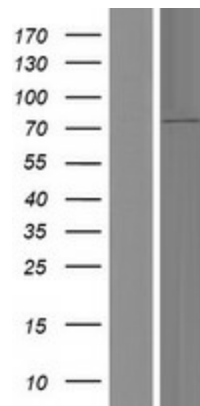
**OTI Annotation:** This clone was engineered to express the complete ORF with an expression tag. Expression varies depending on the nature of the gene.

<b>Components:</b>	The ORF clone is ion-exchange column purified and shipped in a 2D barcoded Matrix tube containing 10ug of transfection-ready, dried plasmid DNA (reconstitute with 100 ul of water).
<b>Reconstitution Method:</b>	<ol style="list-style-type: none"><li>1. Centrifuge at 5,000xg for 5min.</li><li>2. Carefully open the tube and add 100ul of sterile water to dissolve the DNA.</li><li>3. Close the tube and incubate for 10 minutes at room temperature.</li><li>4. Briefly vortex the tube and then do a quick spin (less than 5000xg) to concentrate the liquid at the bottom.</li><li>5. Store the suspended plasmid at -20°C. The DNA is stable for at least one year from date of shipping when stored at -20°C.</li></ol>
<b>RefSeq:</b>	<a href="#">NM_001146205.2</a>
<b>RefSeq ORF:</b>	1920 bp
<b>Locus ID:</b>	115727
<b>UniProt ID:</b>	<a href="#">Q8TDF6</a>
<b>Cytogenetics:</b>	19q13.2
<b>Protein Families:</b>	Druggable Genome
<b>Protein Pathways:</b>	MAPK signaling pathway
<b>MW:</b>	71.1 kDa
<b>Gene Summary:</b>	<p>The protein encoded by this gene is a member of the Ras guanyl nucleotide-releasing protein (RasGRP) family of Ras guanine nucleotide exchange factors. It contains a Ras exchange motif, a diacylglycerol-binding domain, and two calcium-binding EF hands. This protein was shown to activate H-Ras in a cation-dependent manner in vitro. Expression of this protein in myeloid cell lines was found to be correlated with elevated level of activated RAS protein, and the RAS activation can be greatly enhanced by phorbol ester treatment, which suggested a role of this protein in diacylglycerol regulated cell signaling pathways. Studies of a mast cell leukemia cell line expressing substantial amounts of abnormal transcripts of this gene indicated that this gene may play an important role in the final stages of mast cell development. Multiple transcript variants encoding different isoforms have been found for this gene. [provided by RefSeq, Apr 2009]</p>

Product images:



Circular map for RC228512



Western blot validation of overexpression lysate (Cat# [LY431540]) using anti-DDK antibody (Cat# [TA50011-100]). Left: Cell lysates from untransfected HEK293T cells; Right: Cell lysates from HEK293T cells transfected with RC228512 using transfection reagent MegaTran 2.0 (Cat# [TT210002]).