

Product datasheet for **RC228506**

Neurofascin (NFASC) (NM_001005389) Human Tagged ORF Clone

Product data:

Product Type:	Expression Plasmids
Product Name:	Neurofascin (NFASC) (NM_001005389) Human Tagged ORF Clone
Tag:	Myc-DDK
Symbol:	Neurofascin
Synonyms:	NEDCPMD; NF; NRCAML
Mammalian Cell Selection:	Neomycin
Vector:	pCMV6-Entry (PS100001)
E. coli Selection:	Kanamycin (25 ug/mL)



[View online »](#)

ORF Nucleotide Sequence:

>RC228506 representing NM_001005389
 Red=Cloning site Blue=ORF Green=Tags(s)

TTTTGTAATACGACTCACTATAGGGCGGCCGGGAATTCGTCGACTGGATCCGGTACCGAGGAGATCTGCC
 GCCCGCATCGCC

ATGGCCAGGCAGCCACCGCCGCTGGGTCCATGCAGCCTTCCTCCTCGCCTCCTCAGTCTTGGCGGAG
 CCATCGAAATTCCTATGGATCCAAGCATTGAGAATGAGCTGACGAGCCGCCAACCATCACCAAGCAGTC
 AGCGAAGGATCACATCGTGGACCCCGTGATAACATCCTGATTGAGTGTGAAGCAAAAGGGAACCCCTGCC
 CCCAGTTCCTACTGGACACGAAACAGCAGATTCTCAACATCGCCAAGGACCCCGGGTGTCCATGAGGA
 GGAGGTCTGGGACCTGGTATTGACTTCCGCAGTGGCGGGCGCCGGAGGAATATGAGGGGAATATCA
 GTGCTTCGCCGCAACAAATTTGGCAGGCCCTGTCCAATAGGATCCGCCTGCAGGTGTCTAAATCTCT
 CTGTGGCCCAAGGAAACCTAGACCCTGTCGTGGTCCAAGAGGGCGCTCCTTTGACGCTCCAGTGAACC
 CCCCCTGGACTTCCATCCCCGGTTCATTTCTGGATGAGCAGTCCATGGAGCCATCACCAAGACAA
 ACGTGTCTCTCAGGGCCATAACGGAGACCTATACTTCTCAACGTGATGCTGCAGGACATGCAGACCAC
 TACAGTTGTAACGCCGCTTCCACTTACCACACCATCCAGCAGAAGAACCCTTACCCTCAAGGTCC
 TACCACCCGAGGAGTTGCAGAAAGAACCAAGCTTCATGTATCCCCAGGGCACCGGAGCAGCCAGAT
 GGTGCTTCGTGGCATGGACCTCCTGCTGGAATGCATCGCCTCCGGGTCCCAACACCAGACATCGCATGG
 TACAAGAAAGGTGGGACCTCCCATCTGATAAGGCCAAGTTTGAAGACTTAAATAAGGCCCTGCGTATCA
 CAAATGTCTCTGAGGAAGACTCCGGGGAGTATTTCTGCTGGCTCCAACAAGATGGGCAGCATCCGGCA
 CACGATCTCGGTGAGAGTAAAGGCTGCTCCCTACTGGTGGACGAACCCCAAGAACCTTATCTGGCTCCT
 GGCGAGGATGGGAGACTGGTGTGTCGAGCCAATGGAACCCCAACCCACTGTCCAGTGGATGGTGAATG
 GGAACCTTTGCAATCGGCACCACCTAACCCAAACCGTGAGGTGGCCGGAGACACCATCATCTTCCGGGA
 CACCCAGATCAGCAGCAGGGCTGTGTACCAAGTGAACACCTCCAACGAGCATGGCTACCTGCTGGCCAAC
 GCCTTTGTCAGTGTGCTGGATGTGCCGCTCGGATGCTGTGCGCCCGGAACCAGCTCATTGAGTGATTC
 TTTACAACCGGACGCGGCTGGACTGCCCTTTCTTTGGGTCTCCATCCCCACACTGCGATGGTTTAAAGAA
 TGGGCAAGGAAGCAACCTGGATGGTGGCAACTACCATGTTTATGAGAACGGCAGTCTGGAATTAAGATG
 ATCCGCAAAGAGGACCAGGGCATCTACACCTGTGTCGCCACCAACATCCTGGGCAAAGCTGAAAACCAAG
 TCCGCTGGAGGTCAAAGACCCACCAGGATCTACCGGATGCCCGAGGACCAGGTGGCCAGAAGGGGCAC
 CACGGTGCAGCTGGAGTGTGGGTGAAGCAGACCCCTCCCTGAAACTCACCGTCTCCTGGCTGAAGGAT
 GACGAGCCGCTCTATATTGAAACAGGATGAAGAAGGAAGACGACTCCCTGACCATCTTTGGGTGGCAG
 AGCGGGACCAAGGAGATTACACGTGTGTCGCCAGCACCAGCTAGACCAAGACCTGGCCAAGGCCTACCT
 CACCGTGTAGGTAAGTACCCATGCTCACCTGGCAC

ACGCGTACGCGGCCGCTCGAGCAGAAACTCATCTCAGAAGAGGATCTGGCAGCAATGATATCCTGGATT
 ACAAGGATGACGACGATAAGGTTTAA

Protein Sequence:

>RC228506 representing NM_001005389
 Red=Cloning site Green=Tags(s)

MARQPPPPWHAFLCLLLSLGGAIEIPMDPSIQNELTQPPTITKQSAKDHI VDPDRNII ECEAKGNPA
 PSFHWTRNSRFFNIAKDRVSMRRRSGTLVIDFRSGRPEEYEGEYQCFARNKFGTALSNRIRLQVSKSP
 LWPKENLDPVVVQEGAPLTLQCNPPLPSPVIFWSSSMEPITQDKRVSQGHNGDLYFSNVMQLDQMOTD
 YSCNARFHFTHTIQQKNPFTLKVLTTRGVAERTPSFMYPQGTASSQMLRGMDDLLECIASGVPTPDIWA
 YKKGDLPSDKAKFENFNKALRITNVSEEDSGEYFCLASNKMGSIRHTISVRVKAAPYWLDEPKNILAP
 GEDGRLVCRANGNPKPTVQWMVNGEPLQSAPPNPNREVAGDTIIFRDTQISSRAVYQCNTSNEHGILLAN
 AFVSVLDVPPRMLSPRNQLIRVILYNRTRLDPCFFGSPITLRFWFKNGQSNLDGGNYHYVYENGSL EIKM
 IRKEDQGIYTCVATNILGKAENQVRLEVDPTR IYRMPEDQVARRGTTVQLECRVKHDP SLKLTVSWLKD
 DEPLYIGNRMKEDDSL TIFGVAERDQGSYTCVASTELDQDLAKAYLTVLGNPCPSWH

TRTRPLEQKLI SEEDLAANDILDYKDDDDKV

Chromatograms: https://cdn.origene.com/chromatograms/mk8070_a10.zip

Restriction Sites: SgfI-MluI

Cloning Scheme:



ACCN: NM_001005389

ORF Size: 1857 bp

OTI Disclaimer: The molecular sequence of this clone aligns with the gene accession number as a point of reference only. However, individual transcript sequences of the same gene can differ through naturally occurring variations (e.g. polymorphisms), each with its own valid existence. This clone is substantially in agreement with the reference, but a complete review of all prevailing variants is recommended prior to use. [More info](#)

OTI Annotation: This clone was engineered to express the complete ORF with an expression tag. Expression varies depending on the nature of the gene.

Components: The ORF clone is ion-exchange column purified and shipped in a 2D barcoded Matrix tube containing 10ug of transfection-ready, dried plasmid DNA (reconstitute with 100 ul of water).

Reconstitution Method:

1. Centrifuge at 5,000xg for 5min.
2. Carefully open the tube and add 100ul of sterile water to dissolve the DNA.
3. Close the tube and incubate for 10 minutes at room temperature.
4. Briefly vortex the tube and then do a quick spin (less than 5000xg) to concentrate the liquid at the bottom.
5. Store the suspended plasmid at -20°C. The DNA is stable for at least one year from date of shipping when stored at -20°C.

RefSeq: [NM_001005389.2](#)

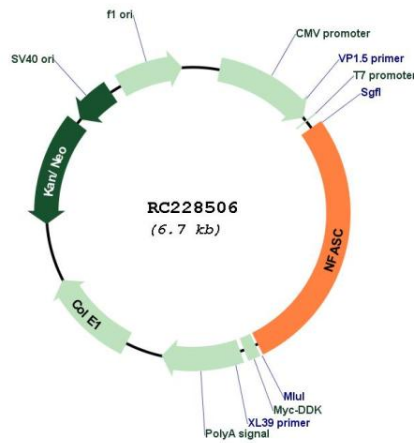
RefSeq ORF: 1860 bp

Locus ID: 23114

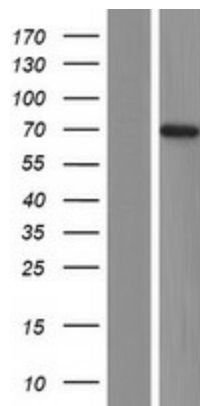
UniProt ID: [O94856](#)
Cytogenetics: 1q32.1
Protein Families: Transmembrane
Protein Pathways: Cell adhesion molecules (CAMs)
MW: 69.57 kDa

Gene Summary: This gene encodes an L1 family immunoglobulin cell adhesion molecule with multiple IGcam and fibronectin domains. The protein functions in neurite outgrowth, neurite fasciculation, and organization of the axon initial segment (AIS) and nodes of Ranvier on axons during early development. Both the AIS and nodes of Ranvier contain high densities of voltage-gated Na⁺ (Nav) channels which are clustered by interactions with cytoskeletal and scaffolding proteins including this protein, gliomedin, ankyrin 3 (ankyrin-G), and betaIV spectrin. This protein links the AIS extracellular matrix to the intracellular cytoskeleton. This gene undergoes extensive alternative splicing, and the full-length nature of some variants has not been determined. [provided by RefSeq, May 2009]

Product images:



Circular map for RC228506



Western blot validation of overexpression lysate (Cat# [LY431534]) using anti-DDK antibody (Cat# [TA50011-100]). Left: Cell lysates from untransfected HEK293T cells; Right: Cell lysates from HEK293T cells transfected with RC228506 using transfection reagent MegaTran 2.0 (Cat# [TT210002]).