

Product datasheet for **RC228502**

Acinus (ACIN1) (NM_001164816) Human Tagged ORF Clone

Product data:

Product Type:	Expression Plasmids
Product Name:	Acinus (ACIN1) (NM_001164816) Human Tagged ORF Clone
Tag:	Myc-DDK
Symbol:	Acinus
Synonyms:	ACINUS; ACN; fSAP152
Mammalian Cell Selection:	Neomycin
Vector:	pCMV6-Entry (PS100001)
E. coli Selection:	Kanamycin (25 ug/mL)



[View online »](#)

ORF Nucleotide Sequence:

>RC228502 representing NM_001164816
 Red=Cloning site Blue=ORF Green=Tags(s)

TTTTGTAATACGACTCACTATAGGGCGGCCGGAATTCGTCGACTGGATCCGGTACCGAGGAGATCTGCC
 GCC**GCGATCGCC**

ATGTCCTCCGGCTGATCGCTGCCCTCCGCCAATAACAATAGAGCCAGCCACTACCAGCAGCCTGGCCCTCT
 TCCTCCTTCTCCAGAGACCAATCCAGCCGAACTCGGGTTTGCTGAGGAGAAGGAGGAAGTGACCAT
 GGACACAAGTGAACACAGACCTGAAATGATGTTCCAGAACCTCCCATGCCTATTGCAGACCAAGTCAGC
 AATGATGACCGCCCGGAGGGCAGTGTTGAAGATGAGGAGAAGAAAGAGAGCTCGCTGCCAAATCATTCA
 AGAGGAAGATCTCCGTTGTCTCAGCTACCAAGGGGTGCCAGCTGGAAACAGTGACACAGAGGGGGGCCA
 GCCTGGTCGGAACGACGCTGGGAGCCAGCACAGCCACCACACAGAAGAAACCTTCCATCAGTATCACC
 ACTGAATCACTAAAGAGCCTCATCCCCGACATCAAACCCCTGGCGGGCAGGAGGCTGTTGTGGATCTTC
 ATGCTGATGACTCTCGCATCTCTGAGGATGAGACAGAGCGTAATGGCGATGATGGGACCCATGACAAGGG
 GCTGAAAATATGCCGGACAGTCACTCAGGTAGTACCTGCAGAGGGCCAGGAGAATGGGCAGAGGGAAGAA
 GAGGAAGAAGAGAAGGAACCTGAAGCAGAACCTCCTGTACCTCCCAGGTGTAGTAGAGGTGGCCCTTGC
 CCCCACCTGCAGAGCATGAAGTAAAGAAAGTGACTTTAGGAGATACCTTAACTCGACGTTCCATTAGCCA
 GCAGAAGTCCGGAGTTTCCATTACCATTGATGACCCAGTCCGAACCTGCCAGGTGCCCTCCCCACCCCGG
 GGCAAGATTAGCAACATTGTCCATATCTCCAATTTGGTCCGTCCTTTCACCTTAGGCCAGCTAAAGGAGT
 TGTTGGGGCGCACAGGAACCTTGGTGGAAGAGGCTTCTGGATTGACAAGATCAAATCTCATTGCTTTGT
 AACGTAACAACAGTAGAGGAAGCTGTTGCCACCCGCACAGCTCTGCACGGGGTCAAATGGCCCCAGTCC
 AATCCCAAATTCCTTTGTGCTGACTATGCCGAGCAAGTAGCTGGATTATCACCGAGGCCTCTTGGTGG
 ACCGTCCCTCTGAAACTAAGACAGAGGAGCAGGGAATACCACGGCCCCTGCACCCCCACCCCAACCC
 GGTCACGCCACACAGCACCCCGGGCAGAGCAGCGGGAGCAGGAACGGGCAGTGCGGGAACAGTGGGCA
 GAACGGGAACGGGAAATGGAGCGCGGGAGCGGACTCGATCAGAGCGTGAATGGGATCGGGACAAAGTTC
 GAGAAGGGCCCGTTCCCGATCAAGTCCCGTGACCGCCGCCGCAAGGAACGTGCGAAGTCTAAAGAAAA
 GAAGAGTGAGAAGAAAGAGAAAGCCAGGAGGAACACCTGCCAAGCTGCTGGATGACCTTTTCCGAAAG
 ACCAAGGCAGCTCCCTGCATCTATTGGCTCCCCTGACTGACAGCCAGATCGTTCAGAAAGAGGCAGAGC
 GGGCCGAACGGGCAAGGAGCGGGAAGCGGCAAGGAGCAAGAAGAAGAAGACAAAAGGAGCGGGA
 GAAGGAAGCCGAGCGGGAACGGAACCGACAGCTGGAGCGAGAGAAACGTGGGAGCACAGTGGGAGAGG
 GACAGGGAGAGAGAGAGAAAGGAGCGGGACAGGGGGACCGAGATCGGGATAGGAAAGGGACCGAG
 AACGAGGCAGGGAAGGGATCGCAGGGACCAAGCGCCACAGCAGAAGCGGAGTGGAGCACACCTGT
 GCGGGACCGGGTGGGCGCCG

ACGCGTACGCGGCCGCTCGAGCAGAAACTCATCTCAGAAGAGGATCTGGCAGCAAATGATATCCTGGATT
 ACAAGGATGACGACGATAAGGTTTAA

Protein Sequence:

>RC228502 representing NM_001164816
 Red=Cloning site Green=Tags(s)

MSPADRCRSANTIEPATTSSLALFLLLQRDQSSRTRGLPEEKEEVMTDSENRPENDVPEPPMPIADQVS
 NDDRPEGSVEDEEKESLPSFKRKISVVSATKGVPAGNSDTEGGQPRKRRWGASTATTQKKPSISIT
 TESLKSLIPDIKPLAQEAVVDLHADDSTRISEDETERNGDDGTHDKLKCRTVTQVVPVPEQENGQREE
 EEEEEKEPEAEPPVPPQVSVEVALPPPAEHEVKKVTLGDTLTRRSISQQKSGVSITIDDPVRTAQPSPPR
 GKISNIHVHISNLVRPFTLGQLKELLGRTGLVEEAFWIDKIKSHCFVYSTVEEAVATRTALHGKWPQS
 NPKFLCADYAEQDEL DYHRGLLVDRPSETKTEEQGI PRPLHPPPPPPVQPPQHPRAEQREQERAVREQWA
 EREREMERRERTRSEREWRDRKVRGPRSRSRSDRRRERAKSKEKKSEKKEKAQEPPAKLLDDLFRK
 TKAAPCIYWLPLTDSQIVQKEAERAERAKERERKRKEQEEEEQKEREKEAERERNRQLEREKRREHSRER
 DRERERERDRGDRDRDRERDRERGRERDRRDTKRHSRSRSRSTPVRDRGGRR

TRTRPLEQKLISEEDLAANDILDYKDDDDKV

Chromatograms: https://cdn.origene.com/chromatograms/mk8069_g10.zip

Restriction Sites: SgfI-MluI

Cloning Scheme:



ACCN: NM_001164816

ORF Size: 1842 bp

OTI Disclaimer: The molecular sequence of this clone aligns with the gene accession number as a point of reference only. However, individual transcript sequences of the same gene can differ through naturally occurring variations (e.g. polymorphisms), each with its own valid existence. This clone is substantially in agreement with the reference, but a complete review of all prevailing variants is recommended prior to use. [More info](#)

OTI Annotation: This clone was engineered to express the complete ORF with an expression tag. Expression varies depending on the nature of the gene.

Components: The ORF clone is ion-exchange column purified and shipped in a 2D barcoded Matrix tube containing 10ug of transfection-ready, dried plasmid DNA (reconstitute with 100 ul of water).

Reconstitution Method:

1. Centrifuge at 5,000xg for 5min.
2. Carefully open the tube and add 100ul of sterile water to dissolve the DNA.
3. Close the tube and incubate for 10 minutes at room temperature.
4. Briefly vortex the tube and then do a quick spin (less than 5000xg) to concentrate the liquid at the bottom.
5. Store the suspended plasmid at -20°C. The DNA is stable for at least one year from date of shipping when stored at -20°C.

RefSeq: [NM_001164816.2](#)

RefSeq ORF: 1845 bp

Locus ID: 22985

UniProt ID: [Q9UKV3](#)

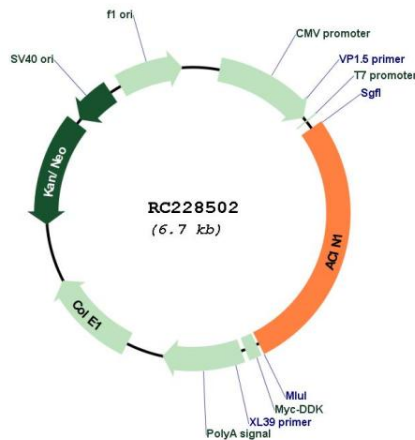
Cytogenetics: 14q11.2

Protein Pathways: Spliceosome

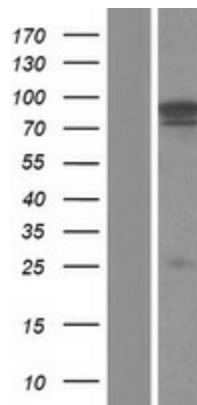
MW: 70.8 kDa

Gene Summary: Apoptosis is defined by several morphologic nuclear changes, including chromatin condensation and nuclear fragmentation. This gene encodes a nuclear protein that induces apoptotic chromatin condensation after activation by caspase-3, without inducing DNA fragmentation. This protein has also been shown to be a component of a splicing-dependent multiprotein exon junction complex (EJC) that is deposited at splice junctions on mRNAs, as a consequence of pre-mRNA splicing. It may thus be involved in mRNA metabolism associated with splicing. Alternatively spliced transcript variants encoding different isoforms have been described for this gene. [provided by RefSeq, Oct 2011]

Product images:



Circular map for RC228502



Western blot validation of overexpression lysate (Cat# [LY431530]) using anti-DDK antibody (Cat# [TA50011-100]). Left: Cell lysates from untransfected HEK293T cells; Right: Cell lysates from HEK293T cells transfected with RC228502 using transfection reagent MegaTran 2.0 (Cat# [TT210002]).