

## Product datasheet for **RC228498**

### **NRG1 (NM\_001159995) Human Tagged ORF Clone**

#### **Product data:**

Product Type:	Expression Plasmids
Product Name:	NRG1 (NM_001159995) Human Tagged ORF Clone
Tag:	Myc-DDK
Symbol:	NRG1
Synonyms:	ARIA; GGF; GGF2; HGL; HRG; HRG1; HRGA; MST131; MSTP131; NDF; NRG1-IT2; SMDF
Mammalian Cell Selection:	Neomycin
Vector:	pCMV6-Entry (PS100001)
E. coli Selection:	Kanamycin (25 ug/mL)



[View online »](#)

**ORF Nucleotide Sequence:**

>RC228498 representing NM\_001159995  
 Red=Cloning site Blue=ORF Green=Tags(s)

TTTTGTAATACGACTCACTATAGGGCGGCCGGGAATTCGTGACTGGATCCGGTACCGAGGAGATCTGCC  
 GCC**CGCATCGCC**

ATGGGAAAGGACGCGCGGGCCGAGTTGGCACCACAGCCTTGCCCTCCCCGATTGAAAGAGATGAAAAGCC  
 AGGAATCGGCTGCAGGTTCCAACTAGTCTTCGGTGTGAAACCAGTTCTGAATACTCCTCTCAGATT  
 CAAGTGGTTCAAGAATGGGAATGAATTGAATCGAAAAACAAACCACAAAATATCAAGATACAAAAAAG  
 CCAGGGAAGTCAGAACTTCGCATTAACAAAGCATCACTGGCTGATTCTGGAGAGTATATGTGCAAAGTGA  
 TCAGCAAATTAGGAAATGACAGTGCCTCTGCCAATATCACCATCGTGAATCAAACGAGATCATCACTGG  
 TATGCCAGCCTCAACTGAAGGAGCATATGTGTCTTCAGCTACATCTACATCCACCCTGGGACAAGCCAT  
 CTTGTAATAATGTGCGGAGAAGGAGAAACTTTCTGTGTGAATGGAGGGGAGTGTTCATGGTGAAAGACC  
 TTTCAAACCCCTCGAGATACTTGTGCAAGTGCCCAAATGAGTTTACTGGTGATCGCTGCCAAAACACTG  
 AATGGCCAGCTTCTACAAGCATCTTGGGATTGAATTTATGGAGGGGAGGAGCTGTACCAGAAGAGAGTG  
 CTGACCATAACCGGCATCTGCATCGCCCTCCTGTGGTGGCAGTATGTGTGTGGTGGCCTACTGCAAAA  
 CCAAGAAACAGCGGAAAAAGCTGCATGACCGTCTTCGGCAGAGCCTTCGGTCTGAACGAAACAATATGAT  
 GAACATTGCCAATGGGCCTCACCATCCTAACCCACCCCGAGAATGTCCAGCTGGTGAATCAATACGTA  
 TCTAAAAACGTCATCTCCAGTGAGCATATTGTTGAGAGAGAAGCAGAGACATCCTTTCCACCAGTCACT  
 ATACTTCCACAGCCATCACTCCACTACTGTCACCAGACTCCTAGCCACAGCTGGAGCAACGGACACAC  
 TGAAAGCATCCTTTCCGAAAGCCACTCTGTAATCGTGATGTATCCGTAGAAAACAGTAGGCACAGCAGC  
 CCAACTGGGGCCCAAGAGGACGCTTAATGGCACAGGAGGCCCTCGTGAATGTAACAGCTTCTCAGGC  
 ATGCCAGAGAAAACCCCTGATTCCTACCGAGACTCCTCATAGTGAAGGATATGTGTGAGGATGACCC  
 CCGGCTCGTATGTCACCTGTAGATTTCCACACGCAAGCTCCCCAAATCGCCCTTCGGAAATGTCT  
 CCACCCGTGTCCAGCATGACGGTGTCCATGCCTTCCATGGCGGTGAGCCCTTATGGAAGAAGAGAGAC  
 CTCTACTTCTCGTGACACCACCAAGGCTGCGGGAGAAGAAGTTTGACCATCACCCCTCAGCAGTTCAGCTC  
 CTTCCACCACAACCCGCGCATGACAGTAACAGCCTCCCTGCTAGCCCTTGAGGATAGTGGAGGATGAG  
 GAGTATGAAACGACCCAAGAGTACGAGCCAGCCCAAGAGCCTGTTAAGAACTCGCCAATAGCCGGCGGG  
 CCAAAAGAACCAAGCCCAATGGCCACATTGCTAACAGATTGGAAGTGACAGCAACACAAGCTCCCAGAG  
 CAGTAACCTCAGAGAGTGAACAGAAAGATGAAAGAGTAGGTGAAGATACGCCTTCTCTGGCATAAGAAC  
 CCCCTGGCAGCCAGTCTTGGAGCAACACCTGCCTTCCGCTGGCTGACAGCAGGACTAACCCAGCAGGCC  
 GCTTCTCGACACAGGAAGAAATCCAGGCCAGGCTGTCTAGTGAATTGCTAACCAAGACCCTATTGCTGT  
 A

**ACGCGT**ACGCGGCCGCTCGAGCAGAAACTCATCTCAGAAGAGGATCTGGCAGCAAATGATATCCTGGATT  
 ACAAGGATGACGACGATAAGGTTTAA

**Protein Sequence:**

>RC228498 representing NM\_001159995  
 Red=Cloning site Green=Tags(s)

MGKGRAGRVGTTALPPRLKEMKSQESAAGSKLVLRCESTSEYSSLRFKWFKNGNELNRKNKPQNIKIQKK  
 PGKSELRINKASLADSGEYMCKVISKLGNSASANITIVESNEIITGMPASTEGAYVSSATSTSTGTSH  
 LVKCAEKEKTFVNGGECFMVKDLSNPSRYLCKPNEFTGDRQNYVMASFYKHLGIEFMEAEELYQKRV  
 LTIITGICIAALLVVGIMCVVAYCKTKKQRKKLHDRLRQSLRSERNMMNIANGPHHPNPPENVQLVNQYV  
 SKNVISSSEHIVEREAETSFSTSHYTSTAHHSTTVTQTPSHSWSNGHTESILSESHSVIVMSSVENSRRSS  
 PTGGPRGRLNGTGGPRECNFLRHARETPDSYRDSPHSERYVSAMTTPARMSPVDFHTPSSPKSPPSEMS  
 PPVSSMTVSMPSMAVSPFMEEERLLLVTTPRLREKFDHHPQQFSSFHHPAHDSNSLPASPLRIVEDE  
 EYETTQEYEPAQEPVKLANRRAKRTKPNGHIANRLEVDNNTSSQSSNSESETEDEVDGTPFLGIQN  
 PLAASLEATPAFRLADSRTPAGRFSTQEEIQARLSSVIANQDPIAV

**TR**TRPLEQKLISEEDLAANDILDYKDDDDKV

**Chromatograms:** [https://cdn.origene.com/chromatograms/mk8069\\_e05.zip](https://cdn.origene.com/chromatograms/mk8069_e05.zip)

**Restriction Sites:** SgfI-MluI

**Cloning Scheme:**



**ACCN:** NM\_001159995

**ORF Size:** 1821 bp

**OTI Disclaimer:** The molecular sequence of this clone aligns with the gene accession number as a point of reference only. However, individual transcript sequences of the same gene can differ through naturally occurring variations (e.g. polymorphisms), each with its own valid existence. This clone is substantially in agreement with the reference, but a complete review of all prevailing variants is recommended prior to use. [More info](#)

**OTI Annotation:** This clone was engineered to express the complete ORF with an expression tag. Expression varies depending on the nature of the gene.

**Components:** The ORF clone is ion-exchange column purified and shipped in a 2D barcoded Matrix tube containing 10ug of transfection-ready, dried plasmid DNA (reconstitute with 100 ul of water).

- Reconstitution Method:**
1. Centrifuge at 5,000xg for 5min.
  2. Carefully open the tube and add 100ul of sterile water to dissolve the DNA.
  3. Close the tube and incubate for 10 minutes at room temperature.
  4. Briefly vortex the tube and then do a quick spin (less than 5000xg) to concentrate the liquid at the bottom.
  5. Store the suspended plasmid at -20°C. The DNA is stable for at least one year from date of shipping when stored at -20°C.

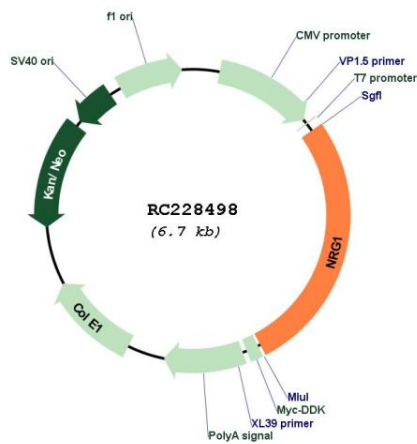
**RefSeq:** [NM\\_001159995.3](#)

**RefSeq ORF:** 1824 bp

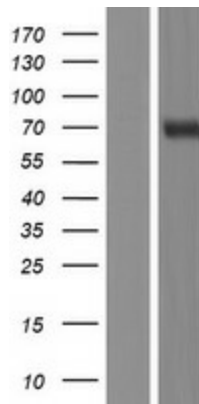
**Locus ID:** 3084

**UniProt ID:** [Q02297](#)  
**Cytogenetics:** 8p12  
**Protein Families:** Druggable Genome, Secreted Protein, Transcription Factors, Transmembrane  
**Protein Pathways:** ErbB signaling pathway  
**MW:** 67 kDa  
**Gene Summary:** The protein encoded by this gene is a membrane glycoprotein that mediates cell-cell signaling and plays a critical role in the growth and development of multiple organ systems. An extraordinary variety of different isoforms are produced from this gene through alternative promoter usage and splicing. These isoforms are expressed in a tissue-specific manner and differ significantly in their structure, and are classified as types I, II, III, IV, V and VI. Dysregulation of this gene has been linked to diseases such as cancer, schizophrenia, and bipolar disorder (BPD). [provided by RefSeq, Apr 2016]

### Product images:



Circular map for RC228498



Western blot validation of overexpression lysate (Cat# [LY431526]) using anti-DDK antibody (Cat# [TA50011-100]). Left: Cell lysates from untransfected HEK293T cells; Right: Cell lysates from HEK293T cells transfected with RC228498 using transfection reagent MegaTran 2.0 (Cat# [TT210002]).