

Product datasheet for **RC228497**

ARHGAP25 (NM_001166277) Human Tagged ORF Clone

Product data:

Product Type:	Expression Plasmids
Product Name:	ARHGAP25 (NM_001166277) Human Tagged ORF Clone
Tag:	Myc-DDK
Symbol:	ARHGAP25
Synonyms:	HEL-S-308; KAIA0053
Mammalian Cell Selection:	Neomycin
Vector:	pCMV6-Entry (PS100001)
E. coli Selection:	Kanamycin (25 ug/mL)



[View online »](#)

ORF Nucleotide Sequence:

>RC228497 representing NM_001166277
 Red=Cloning site Blue=ORF Green=Tags(s)

TTTTGTAATACGACTCACTATAGGGCGGCCGGAATTCGTCGACTGGATCCGGTACCGAGGAGATCTGCC
 GCC**CGCATCGCC**

ATGTCCTAAAATTGCCAAGGAAGTGGGATTTCAACCTGAAAGTGGAGGCTGCGAAAATAGCTCGGTCAA
 GGAGTGTGATGACTGGCGAGCAGATGGCTGCCTTCCATCCATCGTCCACCCCAACCCGCTGGAGAGGCC
 CATCAAGATGGGCTGGCTGAAGAAGCAGAGGTCCATCGTGAAGAAGTGGCAGCAGAGGTACTTTGTGCTG
 AGGGCGCAGCAGCTCTACTACTACAAGGATGAAGAGGACACGAAGCCCCAGGGCTGCATGTATCTACCAG
 GATGTACAATCAAGGAGATCGCCACAAACCCAGAAGAAGTGGGAAGTTTGTCTTTGAAATCATTCCAGT
 GTTTGGCCAGCGCTTGGATGAGACTGTGGCCTATGAACAGAAATTCGGCCCCATCTGGTGCCATCCTG
 GTGGAGAAATGTGCAGAGTTCATCCTGGAGCACGGCCGGAATGAAGAGGGCATCTCCGCTGCCTGGGC
 AGGACAACCTGGTGAAGCAGCTGAGAGACGCTTTTGTGCTGGGAGCGGCCCTCTTTGACAGAGACAC
 AGATGTGCACACTGTGGCTTCCCTGTTAAAGCTCTACCTCGAGACCTCCAGAGCCCGTGGTCCCTGG
 AGCCAGTACGAAGGGTTCCTGCTCTGTGGGCAGCTCACGAATGCGGATGAGGCAAAGGCTCAGCAGGAGT
 TGATGAAGCAGCTCTCCATCCTTCTCGTGACAACATATAGTCTCCTGAGCTACATCTGCAGTTCCTACA
 TGAAATACAGCTGAAGTGTGCTGTTAACAAGATGAGTGTGGACAACCTGGCTACTGTGATTGGTGTGAAT
 CTCATCAGGTGCAAGGTGCAAGACCCCTGCCGTGATCATGAGAGGGACTCCTCAGATCCAAAGAGTGTGA
 CTATGATGATCAGAGACCATGAAGTCTCTTCCCAAGTCCAAGGATATACCCCTGTACCCCTGCCCA
 GAAAAATGACCCCAAGAAAGTCCAGTGGCCCGAAGCTCTGTAGGCTGGGATGCCACTGAAGACCTCCGA
 ATTTCTAGGACAGACAGCTTCAAGTACATGACAAGCGACTCTGATACAACCAGCCCCAGGAAATGCAATC
 CGAGCGATGCGTTTTCCGGAGGACAGCAGCAAAGTACCCAGGAAAAGCCAGGAGACTGAAAAATGCAATC
 TCGTAAAAGGACTCAAACACTCCCTAACCGAAAATGTTTTCTTGACATCAGCTTTTCAGGGTGCCAACAGC
 AGCAAAAATGGAGATCTTTAAAAATGAATTCGGTGCCTTCTCAGAGGCTAAGGCAGGGGAAGGGCACA
 GGAGAACGATGTCTCAAGACTTGCGCCAATTTCTGACTCCCAACGGACTTCCACCTACGATAACGTCCC
 TTCCCTGCCAGGGTCCCCTGGGAGGAAGCCAGTGCCTCTTCCCAAGCCTGTGACTCCAAGGGAGAT
 ACTCTTGCCAGTCCAACCTCTGAAACTGGGCTGGAAAAAAGAACTCTGGAGAAGAGGAAATGATTCTT
 TGCAGAGGATGGTCCAAGAGCTACGAAAGGAAATAGAAACACAGAAGCAAATGTATGAGGAACAGATTAA
 AACCTTGAGAAGGAAAATATGACGTTTGGGCTAAAGTGGTGGGCTCAATGAAGAAGTGGAGAAGGAA
 AAGAAGAAGTCTGCAGCCCTAGAGATCAGCCTCCGCAACATGGAGCGCTCCCGGAGGATGTTGAGAAGA
 GGAACAAGGCCTTGAAGAAGAAGTCAAGGAATTTGCAAAATCCATGAAGGAACCAAGACCGAGGCT

ACGCGTACGCGGCCGCTCGAGCAGAAACTCATCTCAGAAGAGGATCTGGCAGCAAATGATATCCTGGATT
 ACAAGGATGACGACGATAAGGTTTAA

Protein Sequence:

>RC228497 representing NM_001166277
 Red=Cloning site Green=Tags(s)

MSLKLPRNWFNLKVEAAKIARSRVMTGEQMAAFHPSSTPNPLERPIKMGWLKKQRSIVKNWQRYFVL
 RAQQLYYKDEEDTKPQGCMYLPGCTIKEIATNPEEAGKFVFEIIPVFGQRLDETVAYEQKFGPHLVPII
 VEKCAEFILEHGRNEEGIFRLPGQDNLVKQLRDAFDAGERPSFDRDTHVHTVASLLKLYLRDLPEPVVPW
 SQYEGFLLCGQLTNADEAKAQELMKQLSILPRDNYSLLSYICRFLHEIQLNCAVNKMSVDNLATVIGVN
 LIRSKVEDPAVIMRGTPQIQRVMTMMIRDHEVLFPSKDIPLSPPAQKNDPKKAPVARSSVGDATEDLR
 ISRTDSFSMSTSDSDTTSPTGQQPSDAFPEDSSKVPREKPGDWKMQSRKRTQTLPNRKCFLTSAFQGAN
 SKMEIFKNEFWSPSEAKAGEGHRRTMSQDLRQLSDSQRSTYDNPVSLPGSPGEEASALSSQACDSKGD
 TLASPNSSETGPGKNSGEEIDSLQRMVQELRKEIETQKQMYEEQIKNLEKENYDVWAKVYVRLNEELEKE
 KKKSAALEISLRNMERSREDVEKRNKALEEEVKEFVKSMEKPKTEA

TRTRPLEQKLISEEDLAANDILDYKDDDDKV

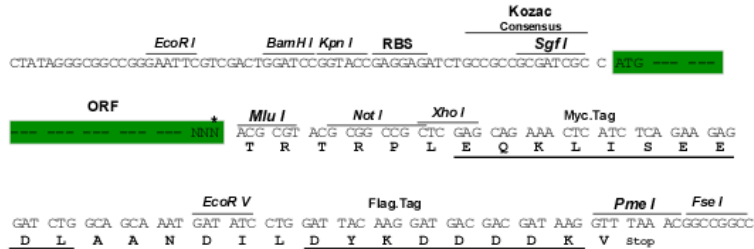
Chromatograms:

https://cdn.origene.com/chromatograms/mk8069_e03.zip

Restriction Sites: SgfI-MluI

Cloning Scheme:

Cloning sites used for ORF Shutting:



* The last codon before the Stop codon of the ORF

ACCN: NM_001166277

ORF Size: 1818 bp

OTI Disclaimer: The molecular sequence of this clone aligns with the gene accession number as a point of reference only. However, individual transcript sequences of the same gene can differ through naturally occurring variations (e.g. polymorphisms), each with its own valid existence. This clone is substantially in agreement with the reference, but a complete review of all prevailing variants is recommended prior to use. [More info](#)

OTI Annotation: This clone was engineered to express the complete ORF with an expression tag. Expression varies depending on the nature of the gene.

Components: The ORF clone is ion-exchange column purified and shipped in a 2D barcoded Matrix tube containing 10ug of transfection-ready, dried plasmid DNA (reconstitute with 100 ul of water).

Reconstitution Method:

1. Centrifuge at 5,000xg for 5min.
2. Carefully open the tube and add 100ul of sterile water to dissolve the DNA.
3. Close the tube and incubate for 10 minutes at room temperature.
4. Briefly vortex the tube and then do a quick spin (less than 5000xg) to concentrate the liquid at the bottom.
5. Store the suspended plasmid at -20°C. The DNA is stable for at least one year from date of shipping when stored at -20°C.

RefSeq: [NM_001166277.2](#)

RefSeq ORF: 1821 bp

Locus ID: 9938

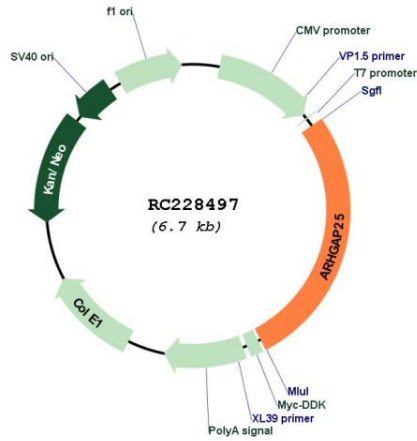
UniProt ID: [P42331](#)

Cytogenetics: 2p13.3

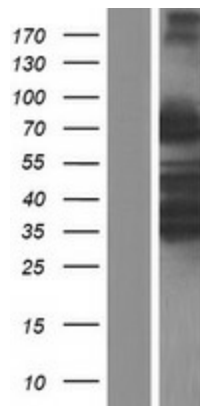
MW: 68.8 kDa

Gene Summary: ARHGAPs, such as ARHGAP25, encode negative regulators of Rho GTPases (see ARHA; MIM 165390), which are implicated in actin remodeling, cell polarity, and cell migration (Katoh and Katoh, 2004 [PubMed 15254788]).[supplied by OMIM, Mar 2008]

Product images:



Circular map for RC228497



Western blot validation of overexpression lysate (Cat# [LY431525]) using anti-DDK antibody (Cat# [TA50011-100]). Left: Cell lysates from untransfected HEK293T cells; Right: Cell lysates from HEK293T cells transfected with RC228497 using transfection reagent MegaTran 2.0 (Cat# [TT210002]).