

## Product datasheet for **RC228494**

### **AIFM3 (NM\_001146288) Human Tagged ORF Clone**

#### **Product data:**

Product Type:	Expression Plasmids
Product Name:	AIFM3 (NM_001146288) Human Tagged ORF Clone
Tag:	Myc-DDK
Symbol:	AIFM3
Synonyms:	AIFL
Mammalian Cell Selection:	Neomycin
Vector:	pCMV6-Entry (PS100001)
E. coli Selection:	Kanamycin (25 ug/mL)



[View online »](#)

**ORF Nucleotide Sequence:**

>RC228494 representing NM\_001146288  
 Red=Cloning site Blue=ORF Green=Tags(s)

TTTTGTAATACGACTCACTATAGGGCGGCCGGGAATTCGTCGACTGGATCCGGTACCGAGGAGATCTGCC  
 GCC**CGCATCGCC**

ATGGGCGGCTGCTTCTCAAACCCAAACCAGGCGTGCCTTGCCACAGTGGAGCTCAAGATCGAGGTGG  
 TGCTGCCTGAGAAGGAGCGAGGCAAGGAGGAGCTGTCGGCCAGTGGGAAGGGCAGCCCCGGCCTACCA  
 GGGCAATGGCACGGCCCCCACTTCCACACGGAGGAGCGCCTGTCCACCCTCACCCCTACCCACGCCCT  
 CAGGATTGCGTGGAGGCTGCTGTCTGCCACGTCAAGGACCTCGAGAATGGCCAGATGCGGGAAGTGGAGC  
 TGGGCTGGGGGAAGGTGTTGCTGGTGAAGGACAATGGGGAGTCCACGCCCTGGGCCATAAGTGTCCGCA  
 CTACGGCGCACCCCTGGTAAAGGCGTCTGTCCCGTGGTGGGTGCGCTGCCCTGGCACGGCGCTGCTG  
 TTCAACATCAGCACTGGGACCTGGAGGACTTCCCTGGCTGGACAGTCTACACAAGTTCAGGTGAAGA  
 TTGAGAAGGAGAAGGTGTACGTCCGGGCCAGCAAGCAGGCCCTACAGCTGCAGCGAAGGACCAAGGTGAT  
 GGCCAAGTGTATCTCTCAAGTGTGGGTACAGCAGTAGCACCAATGTGCTCATTGTGGGTGCAGGTGCA  
 GCTGGCCTGGTGTGTGCAGAGACTGCGGCAGGAGGGCTTCTCCGACCGGATCGTCTGTGCACGCTAG  
 ACCGGCACCTTCCCTACGACCGTCCCAAGCTCAGCAAGTCCCTGGACACACAGCCTGAGCAGCTGGCCCT  
 GAGGCCAAGGAGTTTTTCCGAGCCTATGGCATCGAGGTGCTCACCGAGGCTCAGGTGGTACAGTGGAC  
 GTGAGAATAAGAAGGTCGTGTTCAAGGATGGCTTCAAGCTGGAGTACAGCAAGCTGCTGCTGGCACCAG  
 GGAGCAGCCCCAAGACTCTGAGCTGCAAAGGCAAAGAAGTGGAGAACGTGTTCACTATCCGGACGCCAGA  
 GGATGCCAATCGCGTGGTGAAGCTGGCCGAGGCCGCAACGTGGTGTGCTGGGAGCCGGCTTCTGGGG  
 ATGAGGTTGGCCGCTTACCTGACGGAGAAGGCCCACTCTGTGTCTGGTGGAGCTGGAGGAGACGCCCT  
 TCAGGAGGTTCTGGGGGAGCGCGTGGTGTGCTGCCCTCATGAAGATGTTTGAAGAACAACCGGTGAAGTT  
 CTACATGCAGACGAGGTGTCTGAGCTGCGGGGCCAGGAGGAAAGCTGAAGGAGGTTGTGCTGAAGAGC  
 AGCAAGGTCGTGCGGGCTGACGTCTGCGTGGTGGCATTGGTGCAGTGCCCGCCACAGGCTTCTGAGGC  
 AAAGCGGCATCGGTTTGGATTCCCGAGGCTTCCCTGTCAACAAGATGATGCAGACCAATGTCCAGG  
 CGTGTTCGAGCTGGCGATGCTGTACCTTCCCTTGCCTGGAGGAACAACCGCAAAGTGAACATTCCA  
 CATTGGCAGATGGCTCATGCTCAGGGGCGCTGGCAGCCAGAACATGTTGGCGCAGGAGCGGAGATGA  
 GCACTGTGCCCTACCTCTGGACCGCATGTTTGGCAAGAGCTGCGCTACGCGGGCTACGGAGAAGGCTT  
 CGACGACGTATCATCCAGGGGATCTGGAGGAGCTGAAGTTTGGCTTTTTACTAAAGGCGACGAG  
 GTGATCGCGTGGCCAGCATGAACACGATCCATTGTGTCCAAGTCTGAGGTGCTGGCCTCAGGCC  
 GTGCCATCCGGAAGCGGGAGGTGGAGACTGGCGACATGTCTGGCTTACGGGAAAGGATCC

**ACGCGT**ACGCGGCCGCTCGAGCAGAAACTCATCTCAGAAGAGGATCTGGCAGCAAATGATATCCTGGATT  
 ACAAGGATGACGACGATAAGGTTTAA

**Protein Sequence:**

>RC228494 representing NM\_001146288  
 Red=Cloning site Green=Tags(s)

MGGCFSKPKGAALPTVELKIEVVLPEKERGKEEL SASGKGS PRAYQGNGTARHFHTEERLSTPHYPSP  
 QDCVEAAVCHVKDLENGQMREVELGWGKVLVKDNGEFHALGHKCPHYGAPLVKGVLSRGRVRC PWHGAC  
 FNI STGDLEDFPGLDSLHKFQVKIEKEKVVYRASKQALQLQRRTKVMACI SPSAGYSSSTNVLIVGAGA  
 AGLVCAETLRQEGFSDRIVLCTLDRHLPYDRPKLSKSLDTQPEQLALRPKEFFRAYGIEVLTEAQVVTVD  
 VRTKKVVFKDFKLEYSKLLLAPGSSPKTLSCKGKEVENVFTIRTPEDANRVVRLARGRNVVVVGAGFLG  
 MEVAAYL TEKAHSVSVVELEETPFRRFLGERVGRALMKMFENNRVKFYMQTEVSELRGQEGKLEVVLS  
 SKVVRADVCVVGIGAVPATGFLRQSGIGLDSRGFIPVNKMMQTNVPGVFAAGDAVTFPLAWRNNRKNIP  
 HWQMAHAQGRVAAQNMLAQEAEMSTVPYLWTAMFGKSLRYAGYGEFDDV I IQGDLEELKFVAFYTKGDE  
 V IAVASMNYPDI VSKVAEVLASGRAIRKREVETGMSWLTGKGS

**TRTRPLEQKLI SEEDLAANDILDYKDDDDKV**

**Chromatograms:**

[https://cdn.origene.com/chromatograms/mk8069\\_d07.zip](https://cdn.origene.com/chromatograms/mk8069_d07.zip)

Restriction Sites: SgfI-MluI

Cloning Scheme:



ACCN: NM\_001146288

ORF Size: 1812 bp

OTI Disclaimer: The molecular sequence of this clone aligns with the gene accession number as a point of reference only. However, individual transcript sequences of the same gene can differ through naturally occurring variations (e.g. polymorphisms), each with its own valid existence. This clone is substantially in agreement with the reference, but a complete review of all prevailing variants is recommended prior to use. [More info](#)

OTI Annotation: This clone was engineered to express the complete ORF with an expression tag. Expression varies depending on the nature of the gene.

Components: The ORF clone is ion-exchange column purified and shipped in a 2D barcoded Matrix tube containing 10ug of transfection-ready, dried plasmid DNA (reconstitute with 100 ul of water).

- Reconstitution Method:
1. Centrifuge at 5,000xg for 5min.
  2. Carefully open the tube and add 100ul of sterile water to dissolve the DNA.
  3. Close the tube and incubate for 10 minutes at room temperature.
  4. Briefly vortex the tube and then do a quick spin (less than 5000xg) to concentrate the liquid at the bottom.
  5. Store the suspended plasmid at -20°C. The DNA is stable for at least one year from date of shipping when stored at -20°C.

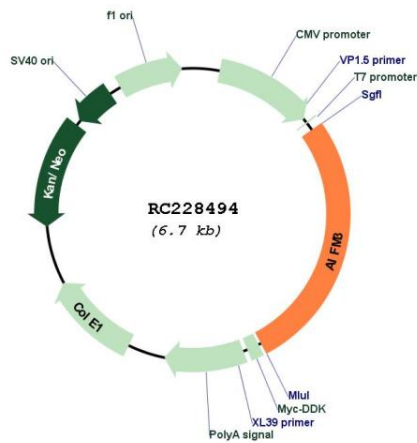
RefSeq: [NM\\_001146288.2](#)

RefSeq ORF: 1815 bp

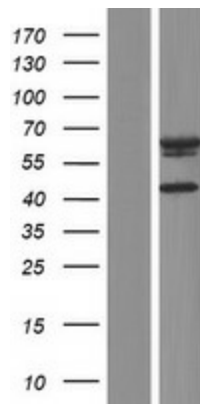
Locus ID: 150209

UniProt ID: [Q96NN9](#)

**Cytogenetics:** 22q11.21  
**Protein Families:** Druggable Genome  
**MW:** 66.3 kDa  
**Gene Summary:** Induces apoptosis through a caspase dependent pathway. Reduces mitochondrial membrane potential.[UniProtKB/Swiss-Prot Function]

**Product images:**


Circular map for RC228494



Western blot validation of overexpression lysate (Cat# [LY431522]) using anti-DDK antibody (Cat# [TA50011-100]). Left: Cell lysates from untransfected HEK293T cells; Right: Cell lysates from HEK293T cells transfected with RC228494 using transfection reagent MegaTran 2.0 (Cat# [TT210002]).