

Product datasheet for **RC228489**

TCF7L2 (NM_001146274) Human Tagged ORF Clone

Product data:

Product Type:	Expression Plasmids
Product Name:	TCF7L2 (NM_001146274) Human Tagged ORF Clone
Tag:	Myc-DDK
Symbol:	TCF7L2
Synonyms:	TCF-4; TCF4
Mammalian Cell Selection:	Neomycin
Vector:	pCMV6-Entry (PS100001)
E. coli Selection:	Kanamycin (25 ug/mL)



[View online »](#)

ORF Nucleotide Sequence:

>RC228489 representing NM_001146274
 Red=Cloning site Blue=ORF Green=Tags(s)

TTTTGTAATACGACTCACTATAGGGCGGCCGGAATTCGTCGACTGGATCCGGTACCGAGGAGATCTGCC
 GCC**CGGATCGCC**

ATGCCGACGTGAACGGCGGTGGAGGGGATGACCTAGGCGCCAACGACGAACTGATTTCTTCAAAGACG
 AGGGCGAACAGGAGGAGAAGAGCTCCGAAAACCTCTCGGCAGAGAGGGATTTAGCTGATGTCAAATCGTC
 TCTAGTCAATGAATCAGAAACGAATCAAAAACAGCTCCTCCGATTCGAGGCGGAAAGACGGCCTCCGCC
 CGCTCCGAAAGTTTCCGAGACAAATCCCGGAAAGTTTGAAGAAGCGGCCAAGAGGCAAGATGGAGGGC
 TCTTTAAGGGGCCACCGTATCCCGGCTACCCCTTCATCATGATCCCCGACCTGACGAGCCCTACCTCCC
 CAACGGATCGCTCTCGCCACCGCCCGAACCTCCATTTTCAGTCCGGCAGCACACATTACTCTGCGTAC
 AAAACGATTGAACACCAGATTGCAGTTCAGTATCTCCAGATGAAATGGCCACTGCTTGATGTCCAGGCAG
 GGAGCCTCCAGAGTAGACAAGCCCTCAAGGATGCCCGTCCCATCACCGGCACACATTGTCTTAACAA
 AGTGCCAGTGGTGCAGCACCCCTACCATGTCCACCCCTCAGCCCTTTATCACGTACAGCAATGAACAC
 TTCAGCCGGGAAACCCACCTCCACACTTACCAGCCGACGTAGACCCCAAACAGGAATCCACGGCCTC
 CGCACCTCCAGATATATCCCCGTATTACCCACTATCGCCTGGCACCGTAGGACAATCCCCATCCGCT
 AGGATGGTTAGTACCACAGCAAGGTCAACCAGTGTACCCAATCACGACAGGAGGATTCAGACACCCCTAC
 CCCACAGCTCTGACCGTCAATGCTTCCATGTCCAGGTTCCCTCCCATATGGTCCCACCACATCATACGC
 TACACACGACGGGCATCCGCATCCGGCCATAGTCACACCAACAGTCAAACAGGAATCGTCCCAGAGTGA
 TGTCCGCTCACTCCATAGTTCAAAGCATCAGGACTCCAAAAGGAAGAAGAAAAGAAGAGCCACATA
 AAGAAACCTCTTAATGCATTCATGTTGTATGAAGGAAATGAGAGCAAAGGTGCTAGCTGAGTGCACGT
 TGAAGAAAGCGCGGCCATCAACAGATCCTTGGCGGAGGTGGCATGCACTGTCCAGAGAAAGAGCAGC
 GAAATACTACGAGCTGGCCCGAAGGAGGACGCTTCATATGCAACTGTACCCCGCTGGTCCGCGCGG
 GATAACTATGAAAGAAGAAGAAGAGGAAAAGGACAAGCAGCCGGGAGAGACCAATGATGCAAATACTC
 CAAAGAAGTGTCCGGCACTGTTCCGGCTTGACCGACAGACTTTATGGTGCAAACCGTGCAGGAGAAAAA
 AAAGTGCCTTCCGCTACATACAAGGTGAAGGAGCTGCCTCAGCCACCCCTCTTCCAGTGAAGCTTACTA
 GATTCGCCTCCCCCTCCCCGAACCTGCTAGGCTCCCCTCCCCGAGACGCCAAGTACAGACTGAGCAGA
 CCCAGCCTCTGTCGCTGTCCCTGAAGCCGACCCCTGGCCACCTGTCCATGATGCTCCGCCACCCGC
 CCTCTGCTCGCTGAGGCCACCCACAAGGCTCCGCCCTGTGCCAACGGGGCCCTGGACTGCCCCCA
 GCCGCTTTCAGCCTGCCGCCCTCCTCATCAATTGCACAGCCGTCGACTTCTTCTTACATTCCACA
 GCTCCCTGGCCGGACCCAGCCAGCCGCTGTCGCTCGTACCAAGCTTTAGAA

ACGCGTACGCGGCCGCTCGAGCAGAAACTCATCTCAGAAGAGGATCTGGCAGCAAATGATATCCTGGATT
 ACAAGGATGACGACGATAAGGTTTAA

Protein Sequence:

>RC228489 representing NM_001146274
 Red=Cloning site Green=Tags(s)

MPQLNGGGDDLGANDELSFKDEGEQEEKSSENSAERDLADVKSLLVNESETNQSSSDSEAERRPPP
 RSESFDRKSRESLEEAQRQDGLFKGPPYPGYPFIMIPDLTSPYLPNGSLSPARTLHFQSGSTHYSAY
 KTIEHQIAVQYLQMKWPLLDVQAGLSQRQALKDARSPSPAHIIVSNKVPVQHPHHVHPLTPLITYSNEH
 FTPGNPPHLPADVDPKTGIPRPPHPPDISPYYPSPGTVGQIPHPLGWLVPQQGQPVYPIITGGFRHPY
 PTALTVNASMSRFPFHMVPPHHTLHTTGIPHPAIVTPTVKQESSQSDVGSLSHSSKHQDSKKEEKKKPHI
 KKPLNAFMLYMKEMRAKVVAECTLKEAAINQILGRRWHALSREEQAKYELARKERQLHMQLYPGWSAR
 DNYGKKKRRKRDQPGETNDANTPKKCRALFGLDRQTLWCKPCRRKKKCVRYIQEGESCLSPSSDGSLL
 DSPPSPNLLGSPPRDAKSQTEQTQPLSLSLKPDPLAHL SMMPPPPALLLAETHKASALCPNGALDLP
 AALQPAAPSSSIAQPSTSSLHSHSLAGTQPQPLSLVTKSLE

TRTRPLEQKLISEEDLAANDILDYKDDDDKV

Chromatograms:

https://cdn.origene.com/chromatograms/mg3921_c09.zip

Reconstitution Method:

1. Centrifuge at 5,000xg for 5min.
2. Carefully open the tube and add 100ul of sterile water to dissolve the DNA.
3. Close the tube and incubate for 10 minutes at room temperature.
4. Briefly vortex the tube and then do a quick spin (less than 5000xg) to concentrate the liquid at the bottom.
5. Store the suspended plasmid at -20°C. The DNA is stable for at least one year from date of shipping when stored at -20°C.

RefSeq: [NM_001146274.2](#)

RefSeq ORF: 1809 bp

Locus ID: 6934

UniProt ID: [Q9NQB0](#)

Cytogenetics: 10q25.2-q25.3

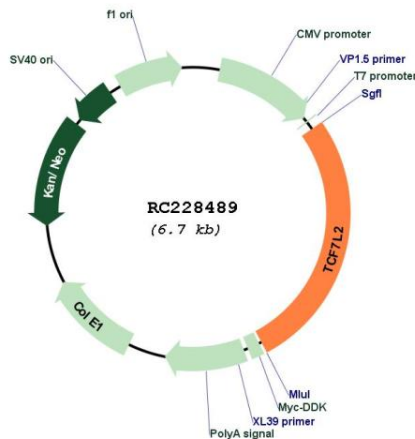
Protein Families: Druggable Genome, Transcription Factors

Protein Pathways: Acute myeloid leukemia, Adherens junction, Arrhythmogenic right ventricular cardiomyopathy (ARVC), Basal cell carcinoma, Colorectal cancer, Endometrial cancer, Melanogenesis, Pathways in cancer, Prostate cancer, Thyroid cancer, Wnt signaling pathway

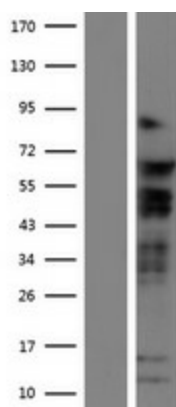
MW: 65.9 kDa

Gene Summary: This gene encodes a high mobility group (HMG) box-containing transcription factor that plays a key role in the Wnt signaling pathway. The protein has been implicated in blood glucose homeostasis. Genetic variants of this gene are associated with increased risk of type 2 diabetes. Several transcript variants encoding multiple different isoforms have been found for this gene.[provided by RefSeq, Oct 2010]

Product images:



Circular map for RC228489



Western blot validation of overexpression lysate (Cat# [LY431517]) using anti-DDK antibody (Cat# [TA50011-100]). Left: Cell lysates from untransfected HEK293T cells; Right: Cell lysates from HEK293T cells transfected with RC228489 using transfection reagent MegaTran 2.0 (Cat# [TT210002]).