

Product datasheet for **RC228487**

EPB41 (NM_001166007) Human Tagged ORF Clone

Product data:

Product Type:	Expression Plasmids
Product Name:	EPB41 (NM_001166007) Human Tagged ORF Clone
Tag:	Myc-DDK
Symbol:	EPB41
Synonyms:	4.1R; EL1; HE
Mammalian Cell Selection:	Neomycin
Vector:	pCMV6-Entry (PS100001)
E. coli Selection:	Kanamycin (25 ug/mL)



[View online »](#)

ORF Nucleotide Sequence:

>RC228487 representing NM_001166007
 Red=Cloning site Blue=ORF Green=Tags(s)

TTTTGTAATACGACTCACTATAGGGCGGCCGGGAATTCGTCGACTGGATCCGGTACCGAGGAGATCTGCC
 GCC**GCGATCGCC**

ATGCACTGCAAGTTTTCTTTGTTGGATGACACAGTTTATGAATGTGTTGTGGAGAAACATGCTAAGGGAC
 AAGATTTGCTTAAACGAGTATGTGAGCATCTCAATCTTTTGAAGAAGACTATTTTGGTCTAGCCATTTG
 GGATAACGCAACCTCTAAGACATGGCTGGATTCCGCCAAAGAAATAAAAAAGCAGTTCTGGTGTCCCT
 TGGAAATTTACATTTAATGTAAGTTTTATCCACCTGACCCAGCACAGTTAACAGAAGACATAACAAGAT
 ATTATTTATGTCTTCAGCTTCGGCAGGACATAGTTGCAGGACGTCTGCCCTGTTCCCTTTCGAACCTTAGC
 ATTATTAGTTCTTACACCATCCAGTCTGAACTGGGAGACTACGACCCAGAACTCCATGGCGTGGATTAT
 GTTAGTGATTTAACTGGCCCCGAATCAGACCAAGGAAGTTGAAGAGAAGGTCATGGAAGTGCATAAGT
 CATACAGTCCATGACTCCAGCTCAGGCTGACTTGGAGTTTCTTGAGAATGCCAAAAAGTTGTCTATGTA
 TGGAGTTGATCTTCATAAAGCAAAGGACTTGAAGGAGTAGATATCATCCTAGGTGTCTGCTCTAGTGGC
 CTCTGGTTTACAAAGATAAGCTGAGAATTAACCGCTTCCCTTGGCCCAAAGTGCTGAAGATTTCTTATA
 AACGTAGTAGCTTTTTCATCAAGATTCGGCTGGAGAGCAAGAGCAGTATGAAAGTACCATCGGATTCAA
 ACTTCCAGTTACCGAGCAGCTAAGAAATATGAAAAGTCTGTGTAGAACATCACACGTTTTTCAGATTG
 ACATCTACAGACACCATCCCAAAGCAAATTTCTTGGCTAGGATCCAAATTTTCGATACAGTGGCCGGA
 CTCAAGCTCAGACCAGGCAAGCTAGTGCTCTAATTGACAGGCCTGCCACACTTCGAGCGTACAGCAAG
 TAAACGGGCGTCCCGAGCCTCGATGGAGCAGCAGCTGTGATTCGGCAGACCGAAGTCTCGGCCCACT
 TCTGCACCTGCCATTACTCAGGGTCAGGTTGCAGAAGTGGCGTCTAGATGCCTCTGCTAAAAAACAG
 TGGTCCCTAAAGCACAGAAGAAACAGTGAAGGCTGAAGTGAAGAAAGGAAGACGAGCCACTGAGCAAGC
 TGAGCCAGAGCCACAGAAGCATGGAAGATTTAGACAAGAGTCAAGAGGAGATCAAAAAACATCATGCC
 AGCATCAGTGAGCTGAAAAAGAACTTATGGAGTCTGTACCAGAACCACGGCCTAGTGAATGGGATAAAC
 GCTTATCCACTCACTCACCTTCCGAACCTTAAACATCAATGGGCAAATCCCCACAGGAGAAGGACCTCC
 CCTGGTGAAGACACAACTGTCACCATCTCAGATAATGCCAATGCTGTGAAAAGTGAATCCCAACCAA
 GACGTCCTATTGTCCACTGAGACCAAGACCATCACTTATGAGGCTGCCAGACTGACGACAACAGTG
 GAGACTTGGACCCAGGAGTCTTGTGACAGCTCAAACATCACATCTGAGACCCCAAGCAGCACCACCAC
 AACTCAAATTACCAAGACTGTAAAAGTGGGATTTAGAGACACGATTGAAAAGAGAATTGTGATCACA
 GGAGATGCTGATATTGACCATGATCAGGTCCTTGTACAAGCCATCAAGGAGGCAAAGGAGCAGCACCAG
 ACATGTCAGTGACCAAGGTGGTCTCCACCAGGAGACCGAGATTGCTGATGAG

ACGCGTACGCGGCCGCTCGAGCAGAAACTCATCTCAGAAGAGGATCTGGCAGCAAATGATATCCTGGATT
 ACAAGGATGACGACGATAAGGTTTAA

Protein Sequence:

>RC228487 representing NM_001166007
 Red=Cloning site Green=Tags(s)

MHKVSLDDTVYECVVEKHAKGQDLLKRVCEHLNLLLEEDYFGLAIWDNATSKTWLDSAKEIKKQVRGVP
 WNFTFNVKFPYPPDPAQLTEDITRYYLCLQLRQDIVAGRLPCSFATLALLGSYTIQSELGDYDPELHGVDY
 VSDFKLAPNQTKLEEKVMEHLKSYRSMTPAQADLEFLENAKKLSMYGVDLHKAKDLEGVDIILGVCSSG
 LLVYKDKLRINRFPWPKVLKISYKRSSFYIKIRPGEQEYESTIGFKLPSYRAAKLWKVCVEHHTFFRL
 TSTDTIPKSKFLALGSKFRYSGRTQAQTRQASALIDRPAPHFERTASKRASRLDAAAVIDSADRSPRPT
 SAPAITQGQVAEGGVLDAKKTVPKQKQKTVKAEVKKEDPEPPEQAEPEPTEAWKDLKSDQEEIKKHA
 SISELKKNFMESVPEPRPSEWDKRLSTHSPFRTLNINGQIPTGEGPPLVKTQTVTISDNANAVKSEIPTK
 DVPIVHTETKTITYEAAQTDNNGDLDPGVLLTAQTITSETPSSTTTTQITKTVKGGISETRIEKRIVIT
 GDADIDHDQVLVQAIKEAKEQHPDMSVTKVVVHQETEIADE

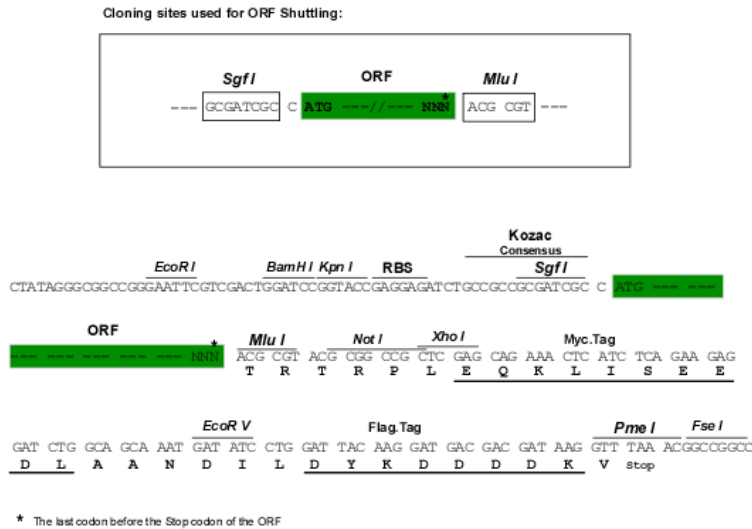
TRTRPLEQKLISEEDLAANDILDYKDDDDKV

Chromatograms:

https://cdn.origene.com/chromatograms/mk8069_b11.zip

Restriction Sites: SgfI-MluI

Cloning Scheme:



ACCN: NM_001166007

ORF Size: 1803 bp

OTI Disclaimer: The molecular sequence of this clone aligns with the gene accession number as a point of reference only. However, individual transcript sequences of the same gene can differ through naturally occurring variations (e.g. polymorphisms), each with its own valid existence. This clone is substantially in agreement with the reference, but a complete review of all prevailing variants is recommended prior to use. [More info](#)

OTI Annotation: This clone was engineered to express the complete ORF with an expression tag. Expression varies depending on the nature of the gene.

Components: The ORF clone is ion-exchange column purified and shipped in a 2D barcoded Matrix tube containing 10ug of transfection-ready, dried plasmid DNA (reconstitute with 100 ul of water).

- Reconstitution Method:
1. Centrifuge at 5,000xg for 5min.
 2. Carefully open the tube and add 100ul of sterile water to dissolve the DNA.
 3. Close the tube and incubate for 10 minutes at room temperature.
 4. Briefly vortex the tube and then do a quick spin (less than 5000xg) to concentrate the liquid at the bottom.
 5. Store the suspended plasmid at -20°C. The DNA is stable for at least one year from date of shipping when stored at -20°C.

RefSeq: [NM_001166007.2](#)

RefSeq ORF: 1806 bp

Locus ID: 2035

Cytogenetics: 1p35.3

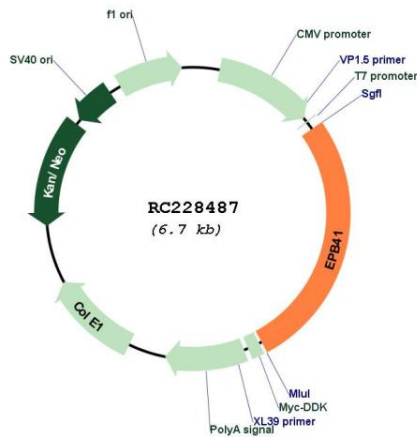
Protein Families: Druggable Genome

Protein Pathways: Tight junction

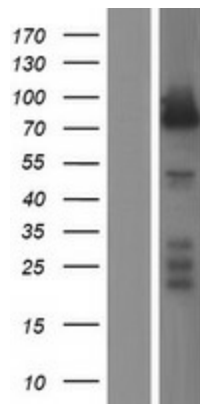
MW: 67.1 kDa

Gene Summary: The protein encoded by this gene, together with spectrin and actin, constitute the red cell membrane cytoskeletal network. This complex plays a critical role in erythrocyte shape and deformability. Mutations in this gene are associated with type 1 elliptocytosis (EL1). Alternatively spliced transcript variants encoding different isoforms have been described for this gene.[provided by RefSeq, Oct 2009]

Product images:



Circular map for RC228487



Western blot validation of overexpression lysate (Cat# [LY431515]) using anti-DDK antibody (Cat# [TA50011-100]). Left: Cell lysates from untransfected HEK293T cells; Right: Cell lysates from HEK293T cells transfected with RC228487 using transfection reagent MegaTran 2.0 (Cat# [TT210002]).