

## Product datasheet for **RC228485**

### **KIRREL 3 (KIRREL3) (NM\_001161707) Human Tagged ORF Clone**

#### **Product data:**

Product Type:	Expression Plasmids
Product Name:	KIRREL 3 (KIRREL3) (NM_001161707) Human Tagged ORF Clone
Tag:	Myc-DDK
Symbol:	KIRREL 3
Synonyms:	KIRRE; MRD4; NEPH2; PRO4502
Mammalian Cell Selection:	Neomycin
Vector:	pCMV6-Entry (PS100001)
E. coli Selection:	Kanamycin (25 ug/mL)



[View online »](#)





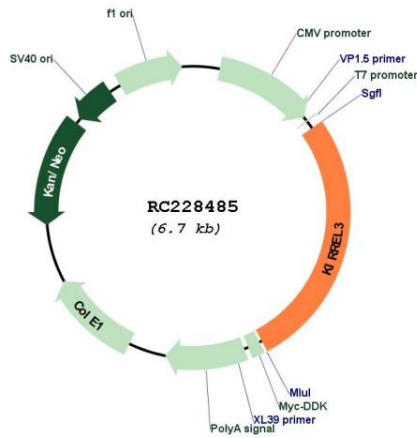
**Cytogenetics:** 11q24.2

**Protein Families:** Transmembrane

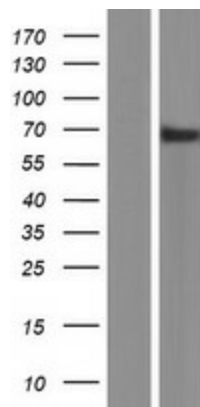
**MW:** 65.1 kDa

**Gene Summary:** The protein encoded by this gene is a member of the nephrin-like protein family. These proteins are expressed in fetal and adult brain, and also in podocytes of kidney glomeruli. The cytoplasmic domains of these proteins interact with the C-terminus of podocin, also expressed in the podocytes, cells involved in ensuring size- and charge-selective ultrafiltration. The protein encoded by this gene is a synaptic cell adhesion molecule with multiple extracellular immunoglobulin-like domains and a cytoplasmic PDZ domain-binding motif. Mutations in this gene are associated with several neurological and cognitive disorders. Alternatively spliced transcript variants encoding different isoforms have been found for this gene. [provided by RefSeq, Jul 2017]

**Product images:**



Circular map for RC228485



Western blot validation of overexpression lysate (Cat# [LY431513]) using anti-DDK antibody (Cat# [TA50011-100]). Left: Cell lysates from untransfected HEK293T cells; Right: Cell lysates from HEK293T cells transfected with RC228485 using transfection reagent MegaTran 2.0 (Cat# [TT210002]).