

Product datasheet for **RC228483**

NEK11 (NM_001146003) Human Tagged ORF Clone

Product data:

Product Type:	Expression Plasmids
Product Name:	NEK11 (NM_001146003) Human Tagged ORF Clone
Tag:	Myc-DDK
Symbol:	NEK11
Mammalian Cell Selection:	Neomycin
Vector:	pCMV6-Entry (PS100001)
E. coli Selection:	Kanamycin (25 ug/mL)



[View online »](#)

ORF Nucleotide Sequence:

>RC228483 representing NM_001146003
 Red=Cloning site Blue=ORF Green=Tags(s)

TTTTGTAATACGACTCACTATAGGGCGGCCGGAATTCGTCGACTGGATCCGGTACCGAGGAGATCTGCC
 GCC**CGGATCGCC**

ATGCTGAAATCCAAGAGGCAGCTAAGTGTGTGAGTGGATCAACAGCCATTTCCACTTATCCAAAGACCT
 TGATTGCAAGAAGATACGTGCTTCAACAAAACTTGGCAGTGGAAGTTTTGGAAGTGTCTATCTGGTTTC
 AGACAAGAAAGCCAAACGAGGAGAGGAATTAAGTACTTAAGGAAATATCTGTTGGAGAACTAAATCCA
 AATGAAACTGTACAGGCCAATTTGGAAGCCCACTCCTCTCCAAGCTGGACCACCCAGCCATTGTCAAGT
 TCCATGCAAGTTTTGTGGAGCAAGATAATTTCTGCATTATCACGGAGTACTGTGAGGGCCGAGATCTGGA
 CGATAAAATTCAGGAATATAACAAGCTGGAAAAATCTTCCAGAAAAATCAAATAATAGAATGGTTTATC
 CAGCTGCTGCTGGGAGTTGACTACATGCATGAGAGGAGGATACTTCATCGAGACTTAAAGTCAAAGAATG
 TATTTCTGAAAAATAATCTCCTTAAAAATGGAGATTTTGGAGTTTCTCGACTTCTAATGGGATCCTGTGA
 CCTGGCCACAACTTAACTGGAACCTCCCATTATATGAGTCCTGAGGCTCTGAAACACCAAGGCTATGAC
 ACAAGTTCGGACATCTGGTCACTGGCATGCATTTTGTATGAGATGTGCTGCATGAATCATGCATTGCTG
 GCTCCAATTTCTTATCCATTGTTTTAAAAATGTTGAAGGTGACACACCTTCTCTCCCTGAGAGATATCC
 AAAAGAACTAAATGCCATCATGGAAGCATGTTGAACAAGAATCCTTCATTAAGACCATCTGCTATCGAA
 ATTTTAAAAATCCCTTACCTTGATGAGCAGCTACAGAACCTAATGTGTAGATATTCAGAAATGACTCTGG
 AAGACAAAAATTTGGATTGTGAGAAGGAGGCTGCTCATATAATTAATGCCATGCAAAAAAGGATCCACCT
 GCAGACTCTGAGGGCACTGTGAGAAGTACAGAAAAATGACGCCAAGAGAAAGGATGCGGCTGAGGAAGCTC
 CAGGCGGCTGATGAGAAAGCCAGGAAGCTGAAAAAGATTGTGGAAGAAAAATATGAAGAAAAATAGCAAAC
 GAATGCAAGAATTGAGATCTCGGAACCTTCAGCAGCTGAGTGTGATGTACTCCATGAAAAAACACATTT
 AAAAGGAATGGAAGAAAAGGAGGAGCAACCTGAGGGAAGACTTTCTTGTTCACCCAGGACGAGGATGAA
 GAGAGGTGGCAAGGCAGGGAAGGAATCTGATGAACCAACTTTAGAGAACCTGCCTGAGTCTCAGCCTA
 TTCCTTCCATGGACCTCCACGAACCTGAATCAATTGTAGAGGATGCCACATCTGACCTTGGATACCATGA
 GATCCCAGAAGACCCACTTGTGGCTGAAGAGTACTACGCTGATGCATTTGATTCTATTGTGAAGAGAGT
 GATGAGGAGGAAGAAGAAATAGCGTTAGAAAGACCAGAGAAAGAAATCAGGAATGAGGGATCCCAGCCTG
 CTTACAGAACAAACACAGGACAGTATCGAAGCGTTGGCCAGGTGTTTGGAAAAATGCTCTGGGTTG
 CACTTCTAGATCAGCCATGCAGAAGCTGGGGACAGAAGTATTTGAAGAGGTCTATAATTACCTCAAGA
 GAGCAAGGCATCAGAATGCTAGCGAAGCAGAGATCCGCGAGTGTTTGGAAAAAGTGGTGCCTCAAGCCAG
 CGACTGTTTTGAAGTGGACCAGCTCCTGTACTTTGAAGAGCAGTTGC

ACGCGTACGCGGCCGCTCGAGCAGAAACTCATCTCAGAAGAGGATCTGGCAGCAAATGATATCCTGGATT
 ACAAGGATGACGACGATAAGGTTTAA

Protein Sequence:

>RC228483 representing NM_001146003
 Red=Cloning site Green=Tags(s)

MLKFQEAACVSGSTAISTYPKTLIARRYVLQQLGSGSFGTVYLVSDKKAKRGEELKVLKEISVGEINP
 NETVQANLEAQLLSKLDHPAIVKHFASFVEQDNFCIITEYCEGRDLDDKIQEYKQAGKIFPENQIEWFI
 QLLLGVDMHERRILHRDLKSKNVFLKNNLLKIGDFGVSRLLMGSCDLATTLTGTPHYMSPEALKHQGYD
 TKSDIWSLACILYEMCCMNHAFAGSNFLSIVLKIIVEGDTPLPERYPKELNAIMESMLNKNPSLRPSAIE
 ILKIPYLDEQLQNLRCRYSEMLEDKNLDCQKEAAHIINAMQKRIHLQTLRALSEVQKMTPRERMRLRKL
 QAADEKARKLKKIVEEYENSKRMQELRSRNFQQLSVDVLHEKTHLKGMEEEKEEQPEGRLSCSPQDEDE
 ERWQGREEESDEPTLENLPESQPIPSMDLHELESIVEDATSDLYHEIPEDPLVAEEYYADAFDSYCEES
 DEEEEEEIALERPEKEIRNEGSQPAYRTNQDSDIEALARCLENVLGCTSLDQPCRSWQKYLKRSIITSR
 EQGIRMLAKQRSASVWKKWCLKPATVLKWTSSCTLKSSC

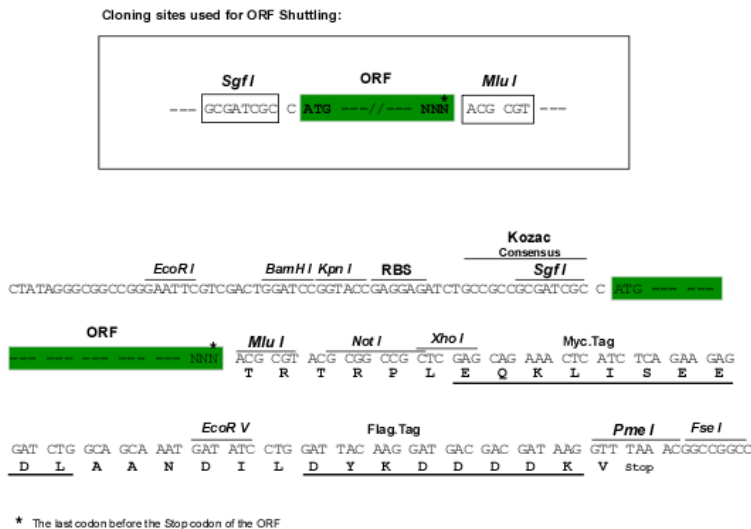
TRTRPLEQKLISEEDLAANDILDYKDDDDKV

Chromatograms:

https://cdn.origene.com/chromatograms/mk8069_b03.zip

Restriction Sites: SgfI-MluI

Cloning Scheme:



ACCN: NM_001146003

ORF Size: 1797 bp

OTI Disclaimer: The molecular sequence of this clone aligns with the gene accession number as a point of reference only. However, individual transcript sequences of the same gene can differ through naturally occurring variations (e.g. polymorphisms), each with its own valid existence. This clone is substantially in agreement with the reference, but a complete review of all prevailing variants is recommended prior to use. [More info](#)

OTI Annotation: This clone was engineered to express the complete ORF with an expression tag. Expression varies depending on the nature of the gene.

Components: The ORF clone is ion-exchange column purified and shipped in a 2D barcoded Matrix tube containing 10ug of transfection-ready, dried plasmid DNA (reconstitute with 100 ul of water).

- Reconstitution Method:
1. Centrifuge at 5,000xg for 5min.
 2. Carefully open the tube and add 100ul of sterile water to dissolve the DNA.
 3. Close the tube and incubate for 10 minutes at room temperature.
 4. Briefly vortex the tube and then do a quick spin (less than 5000xg) to concentrate the liquid at the bottom.
 5. Store the suspended plasmid at -20°C. The DNA is stable for at least one year from date of shipping when stored at -20°C.

RefSeq: [NM_001146003.2](#)

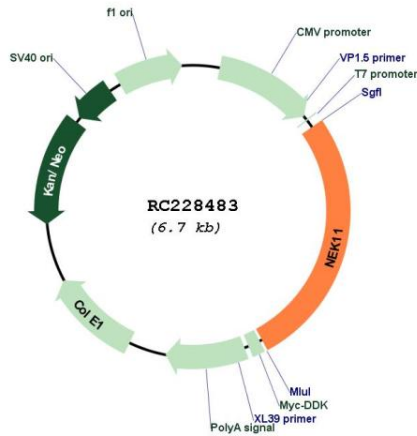
RefSeq ORF: 1800 bp

Locus ID: 79858

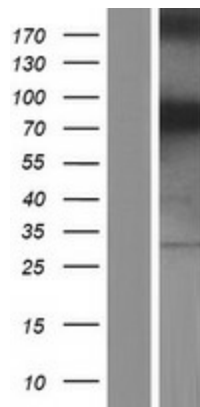
UniProt ID: [Q8NG66](#)

Cytogenetics: 3q22.1
Protein Families: Druggable Genome, Protein Kinase
MW: 68.7 kDa
Gene Summary: This gene encodes a member of the never in mitosis gene A family of kinases. The encoded protein localizes to the nucleoli, and may function with NEK2A in the S-phase checkpoint. The encoded protein appears to play roles in DNA replication and response to genotoxic stress. Alternatively spliced transcript variants have been described.[provided by RefSeq, Mar 2009]

Product images:



Circular map for RC228483



Western blot validation of overexpression lysate (Cat# [LY431511]) using anti-DDK antibody (Cat# [TA50011-100]). Left: Cell lysates from untransfected HEK293T cells; Right: Cell lysates from HEK293T cells transfected with RC228483 using transfection reagent MegaTran 2.0 (Cat# [TT210002]).