

Product datasheet for **RC228478**

SBSN (NM_001166034) Human Tagged ORF Clone

Product data:

Product Type:	Expression Plasmids
Product Name:	SBSN (NM_001166034) Human Tagged ORF Clone
Tag:	Myc-DDK
Symbol:	SBSN
Synonyms:	UNQ698
Mammalian Cell Selection:	Neomycin
Vector:	pCMV6-Entry (PS100001)
E. coli Selection:	Kanamycin (25 ug/mL)



[View online »](#)

ORF Nucleotide Sequence:

>RC228478 representing NM_001166034
 Red=Cloning site Blue=ORF Green=Tags(s)

TTTTGTAATACGACTCACTATAGGGCGGCCGGAATTCGTCGACTGGATCCGGTACCGAGGAGATCTGCC
 GCC**CGCATCGCC**

ATGCATCTTGACGTCTGGTCGGCTCCTGCTCCCTCCTTCTGCTACTGGGGCCCTGCTGGATGGCGG
 CCAGCGATGACCCATTGAGAAGGTCATTGAAGGGATCAACCGAGGGCTGAGCAATGCAGAGAGAGAGGT
 GGGCAAGGCCCTGGATGGCATCAACAGTGAATCACGCATGCCGGAAGGGAAGTGGAGAAGTTTTCAAC
 GGACTTAGCAACATGGGGAGCCACACCGCAAGGAGTTGGACAAAGGCGTCCAGGGGCTCAACCACGGCA
 TGGACAAGGTTGCCATGAGATCAACCATGGTATTGGACAAGCAGGAAAGGAAGCAGAGAAGCTTGCCA
 TGGGGTCAACAACGCTGCTGGACAGGTTGGGAAGGAGGCAGACAACTGATCCATCATGGGGTCCATCAC
 GGGGCCAACCAGGCGGGAAGTGAAGCAGGGAAGTTTGGCCAGGGAGTCGACAATGCTGCAGGGCAGGCTG
 GAAATGAGGCTGGGAGGTTTGGCCAGGGAGTCCACCATGCTGCAGGGCAGGCCGAAATGAGGCTGGGAG
 GTTTGGCCAGGGAGTCCACCATGCTGCAGGGCAGGCCGAAATGAGGCTGGGAGATTTGGCCAGGGGCC
 CACCATGGTCTCAGTGAAGGCTGGAAGGAGACAGAGAAGTTTGGCCAGGGGATCCACCATGCTGCCGGTC
 AGGTTGGGAAGGAGGCAGAGAAGTTTGGCCAGGGGCCACCATGCTGCCGGGCAGGCCGGAATGAGGC
 AGGGAGATTTGGCCAGGGGTCACCATGGTCTCAGTGAAGGAGACAGAGAAGTTTGGCCAGGGGCC
 GGGGTCCACCATACTGCTGGTCAAGTTGGGAAGGAGGCAGAGAAGTTTGGCCAGGGGCCACCATGCTG
 CGGGCAGGCCGAAATGAGGCAGGGAGATTTGGCCAGGGGCCACCATGCTGCCGGGCAGGCCGAAAT
 TGAGGCTGGGAGGTTTGGCCAGGGGTCACCATGGTCTCAGTGAAGGAGACAGAGAAGTTTGGCCAGGGG
 TGCCAGGGGTCACCATGCTGCCAGTCAAGTTTGGGAAGGAAACAGAGAAGCTCGGCCATGGGTCGACCT
 ATGGGGTTAATGAGGCTGGAAGGAAGCAGAGAAGTTTGGCCAGGGGTGTCACCATGCTCGCTCGAGGT
 GGGGAAGGAGGAAGACAGAGTGGTCCAAGGCTCCATCATGGCGTTAGTCAGGCTGGAAGGGAGGCGGGG
 CAGTTTGGCCACGACATTACACACAGCAGGGCAGGCTGGGAAAGAGGAGACATAGCAGTTCATGGTG
 TCCAACCTGGGGTCCACGAGGCCGGAAGGAGGCAGGGCAGTTTGGCCAGGGAGTTCACCATACCTTGA
 ACAGGCCGGGAAGGAAGCAGACAAAGCGGTCCAAGGTTCCACACTGGGGTCCACAGGCTGGGAAGGAA
 GCAGAGAACTTGGCCAAGGGTCAACCATGCTGCTGACCAGGCTGGAAGGAAGTGGAGAAGCTTGGCC
 AAGGTGCCACCATGCTGCTGGCCAGGCCGGAAGGAGCTGCAGAATGCTCATAATGGGGTCAACCAAGC
 CAGCAAGGAGGCCAACCAGCTGCTGAATGGCAACCATCAAAGCGGATCTCCAGCCATCAAGGAGGGGCC
 ACAACCACGCCGTTAGCCTCTGGGGCTCGGTCAACACGCCTTTCATCAACCTTCCGCCCTGTGGAGGA
 CGCTCGCCAACATCATGCC

ACGCGTACGCGGCCGCTCGAGCAGAACTCATCTCAGAAGAGGATCTGGCAGCAAATGATATCCTGGATT
 ACAAGGATGACGACGATAAGGTTTAA

Protein Sequence:

>RC228478 representing NM_001166034
 Red=Cloning site Green=Tags(s)

MHLARLVGSCSLLLL GALSGWAASDDPIEKVIEGINRGLSNAEREV GKALDGINSGITHAGREVEKVFN
 GLSNMGSHTGKELDKGVQGLNHGMKVAHEINHGIQAGKEAEKLGHGVNNAAGQVQKEADKLIHHGVHH
 GANQAGSEAGKFGQVDNAAGQAGNEAGRFQGVHHAAGQAGNEAGRFQGVHHAAGQAGNEAGRFQGA
 HHGLSEGWKETEFQGGIHHHAAGQVQKEAEKFGQGAHHAAGQAGNEAGRFQGVHHLSEGWKETEFQ
 GVHHTAGQVQKEAEKFGQGAHHAAGQAGNEAGRFQGAHHAAGQAGNEAGRFQGVHHLSEGWKETEF
 GQGVHHAASQFGKETELGHGVHGVNEAWKEAEKFGQGVHHAASQVQKEEDRVVQGLHHGVVSQAGREAG
 QFGHDIHHTAGQAGKEGDI AVHGVQPGVHEAGKEAGQFQGVHHTLEQAGKEADKAVQGFHTGVHQAGKE
 AEKLGQGVNHAADQAGKEVEKLGQGAHHAAGQAGKELQNAHNGVNVQASKEANQLLNGNHQSGSSSHQGGGA
 TTTPLASGASVNTPFINLPALWRSVANIMP

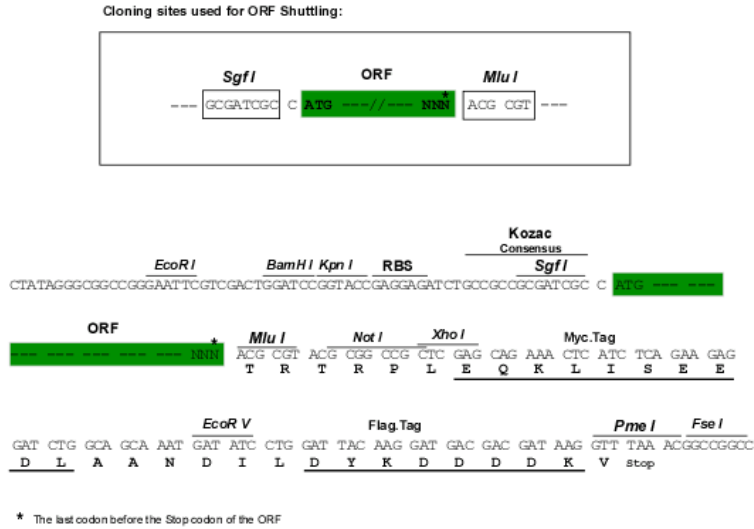
TRTRPLEQKLISEEDLAANDILDYKDDDDKV

Chromatograms:

https://cdn.origene.com/chromatograms/mk8068_g04.zip

Restriction Sites: SgfI-MluI

Cloning Scheme:



ACCN: NM_001166034

ORF Size: 1770 bp

OTI Disclaimer: Due to the inherent nature of this plasmid, standard methods to replicate additional amounts of DNA in E. coli are highly likely to result in mutations and/or rearrangements. Therefore, OriGene does not guarantee the capability to replicate this plasmid DNA. Additional amounts of DNA can be purchased from OriGene with batch-specific, full-sequence verification at a reduced cost. Please contact our customer care team at custsupport@origene.com or by calling 301.340.3188 option 3 for pricing and delivery.

The molecular sequence of this clone aligns with the gene accession number as a point of reference only. However, individual transcript sequences of the same gene can differ through naturally occurring variations (e.g. polymorphisms), each with its own valid existence. This clone is substantially in agreement with the reference, but a complete review of all prevailing variants is recommended prior to use. [More info](#)

OTI Annotation: This clone was engineered to express the complete ORF with an expression tag. Expression varies depending on the nature of the gene.

Components: The ORF clone is ion-exchange column purified and shipped in a 2D barcoded Matrix tube containing 10ug of transfection-ready, dried plasmid DNA (reconstitute with 100 ul of water).

- Reconstitution Method:**
1. Centrifuge at 5,000xg for 5min.
 2. Carefully open the tube and add 100ul of sterile water to dissolve the DNA.
 3. Close the tube and incubate for 10 minutes at room temperature.
 4. Briefly vortex the tube and then do a quick spin (less than 5000xg) to concentrate the liquid at the bottom.
 5. Store the suspended plasmid at -20°C. The DNA is stable for at least one year from date of shipping when stored at -20°C.

RefSeq: [NM_001166034.2](#)

RefSeq ORF: 1773 bp

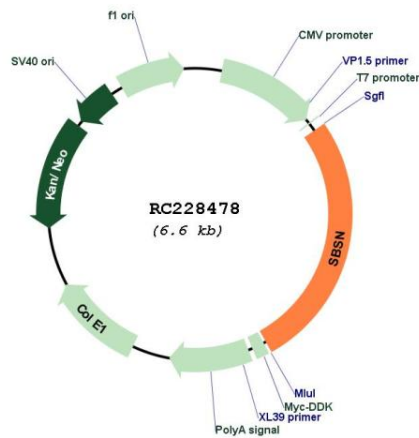
Locus ID: 374897

UniProt ID: [Q6UWP8](#)

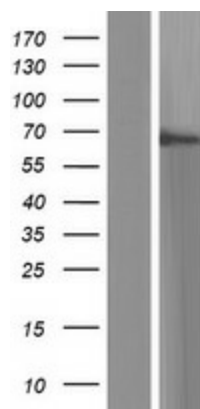
Cytogenetics: 19q13.12

MW: 60.4 kDa

Product images:



Circular map for RC228478



Western blot validation of overexpression lysate (Cat# [LY431506]) using anti-DDK antibody (Cat# [TA50011-100]). Left: Cell lysates from untransfected HEK293T cells; Right: Cell lysates from HEK293T cells transfected with RC228478 using transfection reagent MegaTran 2.0 (Cat# [TT210002]).