

Product datasheet for **RC228475**

Acinus (ACIN1) (NM_001164817) Human Tagged ORF Clone

Product data:

Product Type:	Expression Plasmids
Product Name:	Acinus (ACIN1) (NM_001164817) Human Tagged ORF Clone
Tag:	Myc-DDK
Symbol:	Acinus
Synonyms:	ACINUS; ACN; fSAP152
Mammalian Cell Selection:	Neomycin
Vector:	pCMV6-Entry (PS100001)
E. coli Selection:	Kanamycin (25 ug/mL)



[View online »](#)

ORF Nucleotide Sequence:

>RC228475 representing NM_001164817
 Red=Cloning site Blue=ORF Green=Tags(s)

TTTTGTAATACGACTCACTATAGGGCGGCCGGGAATTCGTCGACTGGATCCGGTACCGAGGAGATCTGCC
 GCC**CGGATCGCC**

ATGTTATCAGAAAGCAAAGAAGGTGAGGAGAAGGAGGAAGTGACCATGGACACAAGTGAAAAACAGACCTG
 AAAATGATGTTCCAGAACCTCCCATGCCTATTGCAGACCAAGTCAGCAATGATGACCGCCGGAGGGCAG
 TGTTGAAGATGAGGAGAAGAAAGAGAGCTCGCTGCCCAAATCATTCAAGAGGAAGATCTCCGTTGTCTCA
 GCTACCAAGGGGGTGCCAGCTGGAAACAGTGACACAGAGGGGGCCAGCCTGGTCGGAAACGACGCTGGG
 GAGCCAGCACAGCCACCACAGAAACCTTCCATCAGTATCACCACTGAATCACTAAAGAGCCTCAT
 CCCCAGACATAAACCCCTGGCGGGCAGGAGGCTGTTGTGGATCTTCATGCTGATGACTCTCGCATCTCT
 GAGGATGAGACAGAGCGTAATGGCGATGATGGGACCCATGACAAGGGGCTGAAAAATGCCGGACAGTCA
 CTCAGGTAGTACCTGCAGAGGGCCAGGAGAATGGGCAGAGGAAGAAGAGGAAGAAGAGAAGGAACCTGA
 AGCAGAACCTCCTGTACCTCCCCAGGTGTAGTAGAGGTGGCCTTGCCCCACCTGCAGAGCATGAAGTA
 AAGAAAGTGACTTTAGGAGATACCTTAACCTCGAGTTCCATTAGCCAGCAGAAGTCCGGAGTTTCCATTA
 CCATTGATGACCCAGTCCGAAGTCCCAGGTGCCCTCCCCACCCCGGGCAAGATTAGCAACATTGTCCA
 TATCTCCAATTTGGTCCGTCTTTCACTTTAGGCCAGCTAAAGGAGTTGTTGGGGCGCACAGGAACCTTG
 GTGAAGAGGCCTTCTGGATTGACAAGTCAAATCTCATTGCTTTGTAACGTACTCAACAGTAGAGGAAG
 CTGTTGCCACCCGCACAGCTCTGCACGGGGTCAAATGGCCCCAGTCCAATCCCAAATTCCTTTGTGCTGA
 CTATGCCGAGCAAGATGAGCTGGATTATCACCGAGGCCTTTGGTGGACCGTCCCTCTGAACTAAGACA
 GAGGAGCAGGGAATACCACGGCCCTGCACCCCAACCCCAACCCCGGTCCAGCCACACAGCACACCCCC
 GGGCAGACAGCGGGAGCAGGAACGGGCAGTGGCGGAACAGTGGCGAGAACGGGAACGGGAATGGAGCG
 GCGGGAGCGGACTCGATCAGAGCGTGAATGGGATCGGGACAAAGTTTCGAGAAGGGCCCGTTCCCGATCA
 AGGTCCCGTGACCGCCGCCAAGGAACGTGCGAAGTCTAAAGAAAAGAAGTGAAGAAGAAGAGAAAAG
 CCCAGGAGGAACCACTGCCAAGCTGCTGGATGACCTTTTCCGAAAGACCAAGGCAGCTCCCTGCATCTA
 TTGGCTCCCACTGACTGACAGCCAGATCGTTCAGAAAGAGGCAGAGCGGGCCGACGGGCAAGGAGCGG
 GAGAAGCGGCAAGGAGCAAGAAGAAGAAGAGCAAAAGGAGCGGGAGAAGGAAGCCGAGCGGGAACGGA
 ACCGACAGCTGGAGCGAGAGAAACGTGGGAGCACAGTGGGAGAGGGACAGGGAGAGAGAGAGAGAAAAG
 GGAGCGGACAGGGGGACCGAGATCGGGATAGGGAAAGGGACCGAGAACGAGGCAGGGAAGGGATCGC
 AGGGACACCAAGCGCCACAGCAGAAGCCGGAGTCGGAGCACACCTGTGCGGGACCGGGTGGCGCCGC

ACGCGTACGCGGCCGCTCGAGCAGAAACTCATCTCAGAAGAGGATCTGGCAGCAAATGATATCCTGGATT
 ACAAGGATGACGACGATAAGGTTTAA

Protein Sequence:

>RC228475 representing NM_001164817
 Red=Cloning site Green=Tags(s)

MLSEKEGEEKEEVTMDTSENRPENDVPEPPMPIADQVSNDDRPEGSVEDEEKKESSLPKSFKRKISVVS
 ATKGVPAGNSDTEGGQPRKRRWGASTATTQKKPSISITTESLKSLIPDIKPLAQQEAVVDLHADDSTRIS
 EDETERNGDDGTHDKGLKICRTVTQVVP AEGQENGQREEEEEKEPEAEPVPPQVSVEVALPPPAEHEV
 KKVTLGDTL TRRSISQQKSGVSIIDDPVRTAQVSPPRGKISNIVHISNLVRPFTLGQLKELLGRTGTL
 VEEAFWIDKIKSHCFVYSTVEEAVATRTALHGVKWPQSNPKFLCADYAEQDEL DYHRGLLVDRPSETKT
 EEQGI PRPLHPPPPPPVQPPQHPRAEQREQERAVREQWAEREREMERRERTRSEREWRDRKVREGPRSRS
 RSRDRRRKERAKSKEKKSEKKEKAQEPPAKLLDDLFRKTKAAPCIYWLPLTDSQIVQKEAERAERAKER
 EKRRKEQEEEEQKEREKEAERERNRQLEREKRREHSRERDRERERERDRGRDRDRDRERDRERGRERDR
 RDTKRHSRSRSTPVRDRGGRR

TRTRPLEQKLISEEDLAANDILDYKDDDDKV

Chromatograms:

https://cdn.origene.com/chromatograms/ja1424_g06.zip

Restriction Sites:

Sgfl-Mlul

Cloning Scheme:


ACCN: NM_001164817

ORF Size: 1749 bp

OTI Disclaimer: The molecular sequence of this clone aligns with the gene accession number as a point of reference only. However, individual transcript sequences of the same gene can differ through naturally occurring variations (e.g. polymorphisms), each with its own valid existence. This clone is substantially in agreement with the reference, but a complete review of all prevailing variants is recommended prior to use. [More info](#)

OTI Annotation: This clone was engineered to express the complete ORF with an expression tag. Expression varies depending on the nature of the gene.

Components: The ORF clone is ion-exchange column purified and shipped in a 2D barcoded Matrix tube containing 10ug of transfection-ready, dried plasmid DNA (reconstitute with 100 ul of water).

- Reconstitution Method:**
1. Centrifuge at 5,000xg for 5min.
 2. Carefully open the tube and add 100ul of sterile water to dissolve the DNA.
 3. Close the tube and incubate for 10 minutes at room temperature.
 4. Briefly vortex the tube and then do a quick spin (less than 5000xg) to concentrate the liquid at the bottom.
 5. Store the suspended plasmid at -20°C. The DNA is stable for at least one year from date of shipping when stored at -20°C.

RefSeq: [NM_001164817.2](#)

RefSeq ORF: 1752 bp

Locus ID: 22985

UniProt ID: [Q9UKV3](#)

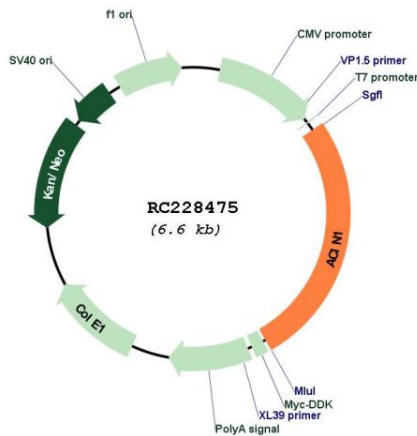
Cytogenetics: 14q11.2

Protein Pathways: Spliceosome

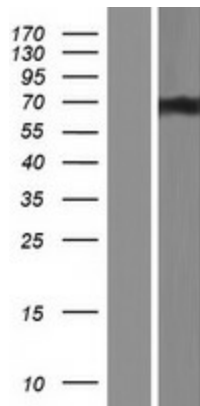
MW: 67.4 kDa

Gene Summary: Apoptosis is defined by several morphologic nuclear changes, including chromatin condensation and nuclear fragmentation. This gene encodes a nuclear protein that induces apoptotic chromatin condensation after activation by caspase-3, without inducing DNA fragmentation. This protein has also been shown to be a component of a splicing-dependent multiprotein exon junction complex (EJC) that is deposited at splice junctions on mRNAs, as a consequence of pre-mRNA splicing. It may thus be involved in mRNA metabolism associated with splicing. Alternatively spliced transcript variants encoding different isoforms have been described for this gene. [provided by RefSeq, Oct 2011]

Product images:



Circular map for RC228475



Western blot validation of overexpression lysate (Cat# [LY431503]) using anti-DDK antibody (Cat# [TA50011-100]). Left: Cell lysates from untransfected HEK293T cells; Right: Cell lysates from HEK293T cells transfected with RC228475 using transfection reagent MegaTran 2.0 (Cat# [TT210002]).