

Product datasheet for **RC228474**

EPS15 (NM_001159969) Human Tagged ORF Clone

Product data:

Product Type:	Expression Plasmids
Product Name:	EPS15 (NM_001159969) Human Tagged ORF Clone
Tag:	Myc-DDK
Symbol:	EPS15
Synonyms:	AF-1P; AF1P; MLLT5
Mammalian Cell Selection:	Neomycin
Vector:	pCMV6-Entry (PS100001)
E. coli Selection:	Kanamycin (25 ug/mL)



[View online »](#)

ORF Nucleotide Sequence:

>RC228474 representing NM_001159969
 Red=Cloning site Blue=ORF Green=Tags(s)

TTTTGTAATACGACTCACTATAGGGCGGCCGGAATTCGTCGACTGGATCCGGTACCGAGGAGATCTGCC
 GCC**CGCATCGCC**

ATGTATTTAAAAAGCGATTTCAGGATTAGGAGGATGGATAACCATACCAGCTGTAGCTGATGTTCTAAAAT
 ATTCTTGCAATTGTTTCTGGTCTTCTAGGGAAAAGAATAATGTGGAACAGGACCTTAAGGAGAAGGAAGA
 TACTATTAACAGAGGACAAGTGAAGTTTCAAGATGAAGTTCAAAGGGAGAATACTAATCTG
 CAAAACTACAGGCCAGAAAACAGCAGGTACAGGAACTCCTTGATGAACTGGATGAGCAGAAAAGCCAGC
 TGGAGGAGCAACTCAAGGAAGTCAGAAAGAAATGTGCTGAGGAGGCCAACTGATCTCTTCTGAAAGC
 TGAATTAAGTGTAGGAAATCGCAGATCTCCACTACGAAGAAGAATTGGCAAAGCTAGAGAAGAGCTG
 AGCCGTCTACAGCAAGAAACAGCAGAATTGGAGGAGAGTGTAGAGTCAGGGAAGGCTCAGTTGGAACCTC
 TTCAGCAGCACCTACAAGATTCACAACAGGAAATAGTTCAATGCAAATGAACTGATGGAATGAAAGA
 TTTGAAAATCATAATAGTCAGTTAAATGGTGCAGTAGCCACACAGCATTCTGTAAACGGAGCTACA
 GATTATTGCAGCCTCAGCACAGCAGTGAACAGCCAACCTTAATGAACATGTTGAAGGCCAGAGCA
 ACCTAGAGTCTGAGCCATACACCAGGAATCTCCAGCAAGAAGTAGTCCTGAACTACTGCCTTCTGGTGT
 GACTGTGAAAATGAGGTGACTACAGCTGTTACTGAAAAAGTTTGTCTGAACTCGACAATAATAGACAT
 TCAAAAGAGGAAGATCCATTTAATGTAGACTCAAGTTCGCTGACAGGTCCAGTTGCAGATACAACTTGG
 ATTTTTCCAGTCTGATCCTTTTGTGGCAGTGTCTTTCAAGGATGATCCTTTTGAAAAATCGATCC
 ATTTGGTGGTGTCTTTCAAAGTTTGCATCCATTTGCATCAGACTGTTTCTTCAGGCAATCTACTGAT
 CCTTTTGCCACTCAAGCACTGACCCCTTCAGTGCAGCCAACAATAGCAGTATTACATCGGTAGAAACGT
 TGAAGACAATGATCCTTTTGTCTCTGGTGAACAGTTGTTGCAGCAAGCGATTACGCCAGACCCCTT
 TGCTTCTGTTTTTGGGAATGAATCATTGGAGGTGGATTGCTGACTTCAGCACATTGTCAAAGGTCAAC
 AATGAAGATCCTTTTCTGTTCCAGCCACATCGAGCTCTGTCAGCAACGTAGTGATTACAAAAATGATTTG
 AGGAAACATCGGTCAAAGTGAAGATGAACCCCAAGCACTGCCACCAAAGATCGGAACTCCAACAAGACC
 CTGCCCTCTACCACCTGGGAAAAGATCCATCAACAAATGGATTCTCTGATCCCTTTAACTGAATGAT
 CCATTTACGCCTTTCCAGGCAACGATAGCCCCAAAGAAAAGATCCTGAAATATTTGTGATCCATTCA
 CTTCTGCTACTACCACTACCAATAAAGAGGCTGATCCAAGCAATTTTGCCAACTCAGTGCTTATCCCTC
 TGAAGAAGATATGATCGAATGGCCAAGAGGAAAAGTGAAGAGAGGAAGAGCAGAGGCTTGCCCGACTA
 AATCAGCAGGAACAAGAAGACTAGAAGTGGCTATTGCACTCAGCAAATCTGAGATATCAGAAGCA

ACGCGTACGCGGCCGCTCGAGCAGAAACTCATCTCAGAAGAGGATCTGGCAGCAAATGATATCCTGGATT
 ACAAGGATGACGACGATAAGGTTTAA

Protein Sequence:

>RC228474 representing NM_001159969
 Red=Cloning site Green=Tags(s)

MYLKSDSGLGGWITIPAVADVLYKYSIVCWSSREKNNVEQDLKEKEDTIKQRTSEVQDLQDEVQRENTNL
 QKLQAQKQVQELLDELDEQKAQLEEQLKEVRKCAEEAQLISSLKAELTSQESQISTYEEELAKAREEL
 SRLQQETAEELESVESGKAQLEPLQQHLQDSQQEISSMQMKLMEMKDLENHNSQLNWCSSPHSILVNGAT
 DYCSLSTSSSETANLNEHVEGQSNLESEPIHQESPARSSPELLPSGVTDENEVTTAVTEKVCSELDNNRH
 SKEEDPFNVDSSSLTGPVADTNLDFQSDPFVGSDFKDDPFKIDPFGGDPFKGSDPFASDCFFRQSTD
 PFATSSDTPFSAANNSSITSVETLKHNDPFAPGGTVVAASDSATDPFASVFGNESFGGFADFSTLSKVN
 NEDPFRSATSSSVSNVITKNVFEETSVKSEDEPPALPPKIGTPTRCPLPPGKRSINKLSDPDPFKLND
 PFQFPGNDSPEKDPKDFCDPFTSATTTTNEADPSNANFSAYPSEEDMIEWAKRESEREEEQRLARL
 NQQEQEDLELAIALSKSEISEA

TRTRPLEQKLISEEDLAANDILDYKDDDDKV

Chromatograms:

https://cdn.origene.com/chromatograms/mk8068_d03.zip

Restriction Sites:

Sgfl-Mlul

Cloning Scheme:


ACCN: NM_001159969

ORF Size: 1746 bp

OTI Disclaimer: The molecular sequence of this clone aligns with the gene accession number as a point of reference only. However, individual transcript sequences of the same gene can differ through naturally occurring variations (e.g. polymorphisms), each with its own valid existence. This clone is substantially in agreement with the reference, but a complete review of all prevailing variants is recommended prior to use. [More info](#)

OTI Annotation: This clone was engineered to express the complete ORF with an expression tag. Expression varies depending on the nature of the gene.

Components: The ORF clone is ion-exchange column purified and shipped in a 2D barcoded Matrix tube containing 10ug of transfection-ready, dried plasmid DNA (reconstitute with 100 ul of water).

Reconstitution Method:

1. Centrifuge at 5,000xg for 5min.
2. Carefully open the tube and add 100ul of sterile water to dissolve the DNA.
3. Close the tube and incubate for 10 minutes at room temperature.
4. Briefly vortex the tube and then do a quick spin (less than 5000xg) to concentrate the liquid at the bottom.
5. Store the suspended plasmid at -20°C. The DNA is stable for at least one year from date of shipping when stored at -20°C.

RefSeq: [NM_001159969.2](#)

RefSeq ORF: 1749 bp

Locus ID: 2060

UniProt ID: [P42566](#)

Cytogenetics: 1p32.3

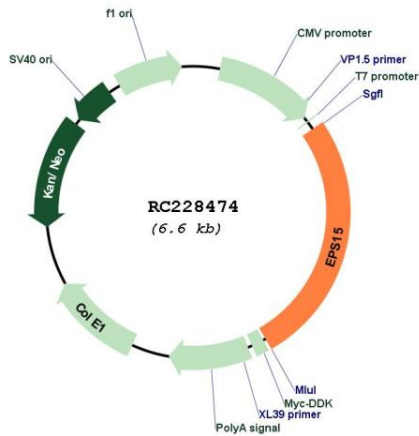
Protein Families: Druggable Genome

Protein Pathways: Endocytosis

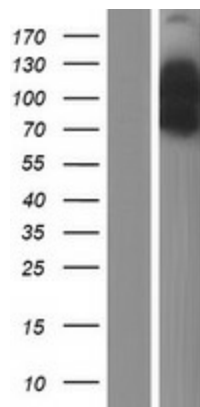
MW: 64.2 kDa

Gene Summary: This gene encodes a protein that is part of the EGFR pathway. The protein is present at clatherin-coated pits and is involved in receptor-mediated endocytosis of EGF. Notably, this gene is rearranged with the HRX/ALL/MLL gene in acute myelogenous leukemias. Alternative splicing results in multiple transcript variants encoding distinct isoforms. [provided by RefSeq, May 2009]

Product images:



Circular map for RC228474



Western blot validation of overexpression lysate (Cat# [LY431502]) using anti-DDK antibody (Cat# [TA50011-100]). Left: Cell lysates from untransfected HEK293T cells; Right: Cell lysates from HEK293T cells transfected with RC228474 using transfection reagent MegaTran 2.0 (Cat# [TT210002]).