

Product datasheet for **RC228465**

CHFR (NM_001161347) Human Tagged ORF Clone

Product data:

Product Type:	Expression Plasmids
Product Name:	CHFR (NM_001161347) Human Tagged ORF Clone
Tag:	Myc-DDK
Symbol:	CHFR
Synonyms:	RNF116; RNF196
Mammalian Cell Selection:	Neomycin
Vector:	pCMV6-Entry (PS100001)
E. coli Selection:	Kanamycin (25 ug/mL)



[View online »](#)

ORF Nucleotide Sequence:

>RC228465 representing NM_001161347
 Red=Cloning site Blue=ORF Green=Tags(s)

TTTTGTAATACGACTCACTATAGGGCGGCCGGAATTCGTCGACTGGATCCGGTACCGAGGAGATCTGCC
 GCC**CGGATCGCC**

ATGGAGCGGCCGAGGAAGCAAGCAGTCGCCGCCGCGAGCCCTGGGACGGCTCCTGCGTCTGGGCG
 CGGAGGAGGGCGAGCCGACGTCCTCCTGAGGAAGCGGGAGTGGACCATCGGGCGGAGACGAGGTTGCGA
 CCTTCTCCTCCAGCAATAAACTGGTCTCTGGAGATCACTGTAGAATTGTAGTGGATGAAAAATCAGGT
 CAGGTGACACTGGAAGATACCAGCACCAGTGAACAGTGATTAACAAGCTGAAGGTTGTTAAGAAGCAGA
 CATGCCCTTACAGACTGGGGATGTCATCTACTTGGTGTACAGGAAGAATGAACCGGAACACAGGTCCTGG
 GGGTGGTGGCATCTCCCTAAAGGAAGTGGTCCCTCTGTGGCAAGTGATGAAGTCTCCAGCTTTCCTCA
 GCTCTCCAGACAGAAAGACTGCGTCTTTTCGTCTGGAACCCAGGATCAGGAGGATTTGGAGCCCG
 TGAAGAAGAAAAAGAGAGAGATGGGGACCTTGACCTGAACGGGAGTGTGGTGCACAAACCGGTAG
 AAATGCCCAAACCGTCCACGAGGACGTCAGAGCAGCGGCTGGGAAGCCAGACAAGATGGAGGAGACGCTG
 ACATGCATCATCTGCCAGGACCTGCTGCAGACTGCGTGAGTTTGCAGCCCTGCATGCACACGTTCTGCG
 CGGCTTGCTACTCGGGCTGGATGGAGCGCTCGTCCCTGTGTCCTACCTGCCGCTGTCCCGTGGAGCGGAT
 CTGTA AAAACCATCTCAACAACCTCGTGGAAGCATACCTCATCCAGCATCCAGACAAGAGTCGCAGT
 GAAGAAGATGTGCAAGTATGGATGCCAGGAATAAAATCACTCAAGACATGCTGCAGCCAAAGTCAGGC
 GGTCTTTTTCTGATGAAGAAGGGAGTTCAGAGGACCTGCTGGAGCTGTGACAGCTTGACAGTGAGTCTCT
 AGACATTAGCCAGCCATACGTCGTGTGCCGGCAGTGTCTGAGTACAGAAGGCAGGCGGCGCAGCCCTCC
 CACTGCCAGCACCCGAGGGCGAGCCAGGAGCCACAGGCCCTGGGGGATGCACCCTCCACGTCGCTCA
 GCCTGACGACAGCAGTCCAGGATTACGTGTGCCCTCTGCAAGGAAGCCACGCCCTGTGACCTGTGCTT
 CCAGCCCATGCCGACCCGAGAGCGGAGCGGAGCAGGACCCGCGTGTGCGCCCTCAGCAGTGTGCGGTC
 TGCTGACGCTTTCTGCCACCTGTACTGGGGCTGCACCCGACCGGCTGCTACGGCTGCTGGCCCGT
 TTTGTGAGCTCAACCTGGGTGACAAGTGTCTGGACGGCGTGTGAACAACAACAGCTACGAGTCAGACAT
 CCTGAAGAATTACCTGGCAACCAGAGTTTGCATGGAAAAACATGTTGACCGAGAGCCTCGTGGCTCTC
 CAGCGGGAGTGTCTGCTGTCTGATTACAGAGTCACGGGAGACACCGTTCTGTGTTACTGCTGTGGCC
 TGCGCAGCTTCCGTGAGCTGACCTATCAGTATCGGCAGAACATTCCTGCTCCGAGTTGCCAGTGGCCGT
 AACATCCCGTCTGACTGCTACTGGGGCCGTAAGTCCGCACTCAGGTGAAAGCTCACCACGCCATGAAA
 TCAATCATATCTGTGAACAGACAAGGTTCAAAAAC

ACGCGTACGCGGCCGCTCGAGCAGAAACTCATCTCAGAAGAGGATCTGGCAGCAAATGATATCCTGGATT
 ACAAGGATGACGACGATAAGGTTTAA

Protein Sequence:

>RC228465 representing NM_001161347
 Red=Cloning site Green=Tags(s)

MERPEEGQSPPPQPWRLLRLGAEEGEPHVLLRKREWTIGRRRGCDLFFPSNKLVS GDHCRIVVDEKSG
 QVTLEDTSTSGTVINKLKVVKQTCP LQTGDVIYLVYRKNEPEHRSGGGI SPKGSGPSVASDEVSSFAS
 ALPDRKTASFSSLEPQDQEDLEPVKKMRGDGDL DLNGQLLVAQPRRNAQTVHEDVRAAAGPKDMEETL
 TCII CQDLLHDCVSLQPCMH TFAACYSGWMERSL CPTCRCPVERICKNHILNNLVEAYLIQHPDKSRS
 EEDVQSM DARNKITQDMLQPKVRRSF SDEEGSSEDLLELSDVDSESSDISQPYVVCRCPEYRRQAAQPP
 HCPAPEGEPGAPQALGDAPSTS VSLTTAVQDYVCP LQGSHALCTCCFPMPDRRAEREQDPRVAPQCAV
 CLQPFCHLYWGC TRTG CYGLAPFCELNLGDKCLDGV LNNNSYESDILKNYLATRGLTWKNMLTESLVAL
 QRGVFLLSDYRV TGD TVLCYCCGLRSFRELTYQYRQNI PASELPVAVTSR PDCYWGRNCR TQVKAHHAMK
 FNHICEQTRFKN

TRTRPLEQKLISEEDLAANDILDYKDDDDKV

Chromatograms:

https://cdn.origene.com/chromatograms/ja1402_e02.zip

Restriction Sites:

Sgfl-Mlul

Cloning Scheme:


ACCN: NM_001161347

ORF Size: 1716 bp

OTI Disclaimer: The molecular sequence of this clone aligns with the gene accession number as a point of reference only. However, individual transcript sequences of the same gene can differ through naturally occurring variations (e.g. polymorphisms), each with its own valid existence. This clone is substantially in agreement with the reference, but a complete review of all prevailing variants is recommended prior to use. [More info](#)

OTI Annotation: This clone was engineered to express the complete ORF with an expression tag. Expression varies depending on the nature of the gene.

Components: The ORF clone is ion-exchange column purified and shipped in a 2D barcoded Matrix tube containing 10ug of transfection-ready, dried plasmid DNA (reconstitute with 100 ul of water).

- Reconstitution Method:**
1. Centrifuge at 5,000xg for 5min.
 2. Carefully open the tube and add 100ul of sterile water to dissolve the DNA.
 3. Close the tube and incubate for 10 minutes at room temperature.
 4. Briefly vortex the tube and then do a quick spin (less than 5000xg) to concentrate the liquid at the bottom.
 5. Store the suspended plasmid at -20°C. The DNA is stable for at least one year from date of shipping when stored at -20°C.

RefSeq: [NM_001161347.1](#), [NP_001154819.1](#)

RefSeq ORF: 1719 bp

Locus ID: 55743

UniProt ID: [Q96EP1](#)

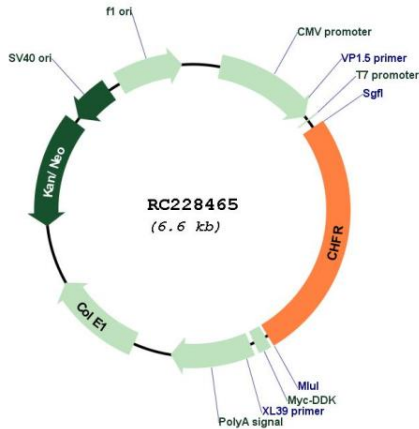
Cytogenetics: 12q24.33

Protein Families: Druggable Genome

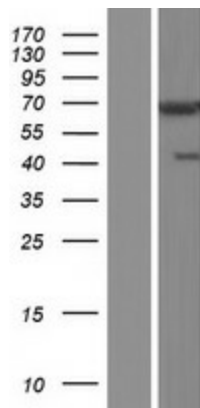
MW: 63.7 kDa

Gene Summary: This gene encodes an E3 ubiquitin-protein ligase required for the maintenance of the antepause checkpoint that regulates cell cycle entry into mitosis and, therefore, may play a key role in cell cycle progression and tumorigenesis. The encoded protein has an N-terminal forkhead-associated domain, a central RING-finger domain, and a cysteine-rich C-terminal region. Alternatively spliced transcript variants that encode different protein isoforms have been described. [provided by RefSeq, Mar 2014]

Product images:



Circular map for RC228465



Western blot validation of overexpression lysate (Cat# [LY431493]) using anti-DDK antibody (Cat# [TA50011-100]). Left: Cell lysates from untransfected HEK293T cells; Right: Cell lysates from HEK293T cells transfected with RC228465 using transfection reagent MegaTran 2.0 (Cat# [TT210002]).