

Product datasheet for **RC228463**

STAU2 (NM_001164380) Human Tagged ORF Clone

Product data:

Product Type:	Expression Plasmids
Product Name:	STAU2 (NM_001164380) Human Tagged ORF Clone
Tag:	Myc-DDK
Symbol:	STAU2
Synonyms:	39K2; 39K3
Mammalian Cell Selection:	Neomycin
Vector:	pCMV6-Entry (PS100001)
E. coli Selection:	Kanamycin (25 ug/mL)



[View online »](#)

ORF Nucleotide Sequence:

>RC228463 representing NM_001164380
 Red=Cloning site Blue=ORF Green=Tags(s)

TTTTGTAATACGACTCACTATAGGGCGGCCGGAATTCGTCGACTGGATCCGGTACCGAGGAGATCTGCC
 GCC**CGCATCGCC**

ATGGCAAACCCAAAAGAGAAAAGTGAATGTGTCTGGTAAATGAGTTAGCCCGTTTCAATAGAGTCCAAC
 CCCAGTATAAACTTCTGAATGAAAGAGGGCCTGCTCATTCAAAGATGTTCTCAGTGCAGCTGAGTCTTGG
 TGAGCAGACATGGGAATCCGAAGCAGCAGTATAAAGAAGGCTCAGCAGGCTGTTGCCAATAAAGCTTTG
 ACTGAATCTACGCTTCCCAAACAGTTCAGAAGCCACCCAAAAGTAAATGTTAAACAATAACCCAGGCAGTA
 TAACTCCAAGTGTGGAAGTGAATGGGCTTGTATGAAAAGGGGAGAGCCTGCCATCTACAGGCCATTAGA
 TCCAAAGCCATCCCAAATTATAGAGCTAATTACAACCTTCGGGGCATGTACAATCAGAGGTATCATTGC
 CCAGTGCCTAAGATCTTTATGTTGAGTCACTGTAGGAAATAATGAATTTTTGGGGAAGGAAAGACTC
 GACAAGCTGCTAGACACAATGCTGCAATGAAAGCCCTCCAAGCACTGCAGAAATGAACCTATCCAGAAAG
 ATCTCCTCAGAAATGGTGAATCAGGAAAGGATGTGGATGATGACAAAGATGCAAAATAGTCTGAGATCAGC
 TTAGTGTTTGAAATTGCTCTGAAGCGAAATATGCCTGTCAGTTTTGAGGTTATTAAGAAAGTGGACCAC
 CACATATGAAAAGCTTTGTTACTCGAGTGTGAGTGGAGAGTTCTCTGCAGAAGGAGAAGGAAATAGCAA
 AAAACTCTCCAAGAAGCGCGCTGCGACCACCGTCTTACAGGAGCTTAAAAAACTTCCACCTCTTCTGTG
 GTGGAAAAGCCAAAATTTTTTAAAAACGCCCTAAAAACAATAGTAAAGGCCGAGCAGAAATATGGCC
 AAGGGATGAACCTATTAGCCGCTGGCGCAAATCAACAGGCCAAAAGGAAAAGGAGCCGATTATGT
 TTTGCTTTCAGAAAGAGGAATGCCTCGAGTGCAGAAATTTGTGATGCAGGTGAAGGTAGGCAATGAAGTT
 GCTACAGGAACAGGACCTAATAAAAAGATAGCCAAAAAAATGCTGCAGAAGCAATGCTGTTACAACCTG
 GTTATAAAGCATCCACTAATCTTCAGGATCAACTTGAGAAGACAGGGGAAAACAAGGATGGAGTGGTCC
 AAAGCCTGGGTTTCTGAACCAACAATAATACTCCAAAAGGAATCTTCAATTTGCTCCTGATGTTTAT
 CAAGAGATGGAAGCCAGCCGCCCAAAAGTAACTCTGGCACTACTCTAGGCTATTTGTCACCCAAAGATA
 TGAACCAACCTTCAAGCTCTTTCTTCAAGTATATCTCCACATCGAATAGTTTCAAGTACAATTGCCAGGGA
 ACTCCTTATGAATGGAACATCTTCTACAGCTGAAGCCATAGGTTTAAAAGGAAGTTCTCCTACTCCCTT
 TGTTCTCCAGTACAACCTTCAAACAAGTGAATATTTAGCAAGGATTCAAGGCTTTCAGGCAGCCTTAA
 GTGCCCTGAAACAATTTCTGAACAAGGACTGGATCCAATCGATGGAGCAATGAATATCGAAAAAGTTC
 TCTTGAACCAAGCAAGCATCTGAGAGAGAAAGCGGACAATAACCAGGCACCCCGGGCTCCATCGT
 CAGGACTGCAAGAAATCAAACCTCGGCCGTC

ACGCGTACGCGGCCGCTCGAGCAGAAACTCATCTCAGAAGAGGATCTGGCAGCAAATGATATCCTGGATT
 ACAAGGATGACGACGATAAGGTTTAA

Protein Sequence:

>RC228463 representing NM_001164380
 Red=Cloning site Green=Tags(s)

MANPKEKTAMCLVNELARFNRVQPQYKLLNERGPAHSMKFSVQLSLGEQWSESGSSIKKAQQAVANKAL
 TESTLPPKPVQKPPKSNVNNPISITPTVELNGLAMKRGEPAIYRPLDPKPFNYRANYNFRGMYNQRYHC
 PVPKIFYVQLTVGNNEFFGEGKTRQAARHNAAMKALQALQNEPIPERSPQNGESGKDVEDDKDANKSEIS
 LVFEIALKRNPVSFEVIKESGPPHMKSFVTRVSVGEFSAELEGNSKLSKKRAATTVLQELKKLPLPV
 VEKPKLFFKRPKTIKAGPEYQGMPNISRLAQIQAKKEKEPDYVLLSERGMPPRRREFVMQVKVNEV
 ATGTGPNKIIAKKNAAEAMLLQLGYKASTNLQDQLEKTGENKGSWSPKPGFPEPTNNTPKGILHLSPDVY
 QEMEASRHKVISGTTGLYLSPKDMNQSSFFSISPTSNSATIARELLMNGTSSTAEIAGLKGSSPTPP
 CSPVQPSKQLEYLARIQGFQAALSALKQFSEQGLDPIDGAMNIEKGSLEKQAKHLREKADNNQAPPGSIA
 QDCKKNSAV

TRTRPLEQKLISEEDLAANDILDYKDDDDKV

Chromatograms:

https://cdn.origene.com/chromatograms/mk8067_g10.zip

Restriction Sites:

Sgfl-Mlul

Cloning Scheme:


ACCN: NM_001164380

ORF Size: 1710 bp

OTI Disclaimer: The molecular sequence of this clone aligns with the gene accession number as a point of reference only. However, individual transcript sequences of the same gene can differ through naturally occurring variations (e.g. polymorphisms), each with its own valid existence. This clone is substantially in agreement with the reference, but a complete review of all prevailing variants is recommended prior to use. [More info](#)

OTI Annotation: This clone was engineered to express the complete ORF with an expression tag. Expression varies depending on the nature of the gene.

Components: The ORF clone is ion-exchange column purified and shipped in a 2D barcoded Matrix tube containing 10ug of transfection-ready, dried plasmid DNA (reconstitute with 100 ul of water).

Reconstitution Method:

1. Centrifuge at 5,000xg for 5min.
2. Carefully open the tube and add 100ul of sterile water to dissolve the DNA.
3. Close the tube and incubate for 10 minutes at room temperature.
4. Briefly vortex the tube and then do a quick spin (less than 5000xg) to concentrate the liquid at the bottom.
5. Store the suspended plasmid at -20°C. The DNA is stable for at least one year from date of shipping when stored at -20°C.

RefSeq: [NM_001164380.2](#)

RefSeq ORF: 1713 bp

Locus ID: 27067

UniProt ID: [Q9NUL3](#)

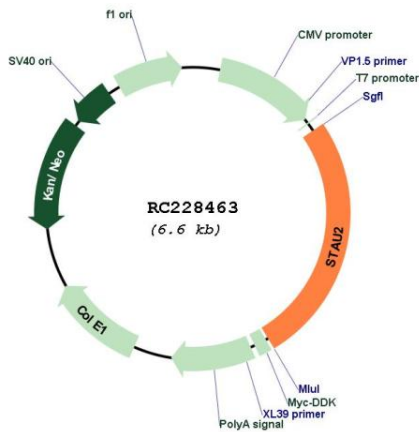
Cytogenetics: 8q21.11

Protein Families: Transcription Factors

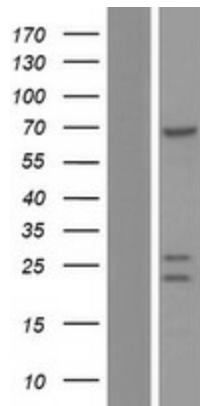
MW: 62.4 kDa

Gene Summary: Staufen homolog 2 is a member of the family of double-stranded RNA (dsRNA)-binding proteins involved in the transport and/or localization of mRNAs to different subcellular compartments and/or organelles. These proteins are characterized by the presence of multiple dsRNA-binding domains which are required to bind RNAs having double-stranded secondary structures. Staufen homolog 2 shares 48.5% and 59.9% similarity with drosophila and human staufer, respectively. The exact function of Staufen homolog 2 is not known, but since it contains 3 copies of conserved dsRNA binding domain, it could be involved in double-stranded RNA binding events. Several transcript variants encoding different isoforms have been found for this gene. [provided by RefSeq, Aug 2009]

Product images:



Circular map for RC228463



Western blot validation of overexpression lysate (Cat# [LY431491]) using anti-DDK antibody (Cat# [TA50011-100]). Left: Cell lysates from untransfected HEK293T cells; Right: Cell lysates from HEK293T cells transfected with RC228463 using transfection reagent MegaTran 2.0 (Cat# [TT210002]).