

Product datasheet for **RC228459**

Glypican 3 (GPC3) (NM_001164618) Human Tagged ORF Clone

Product data:

Product Type:	Expression Plasmids
Product Name:	Glypican 3 (GPC3) (NM_001164618) Human Tagged ORF Clone
Tag:	Myc-DDK
Symbol:	Glypican 3
Synonyms:	DGSX; GTR2-2; MXR7; OCI-5; SDYS; SGB; SGBS; SGBS1
Mammalian Cell Selection:	Neomycin
Vector:	pCMV6-Entry (PS100001)
E. coli Selection:	Kanamycin (25 ug/mL)



[View online »](#)

ORF Nucleotide Sequence:

>RC228459 representing NM_001164618
 Red=Cloning site Blue=ORF Green=Tags(s)

TTTTGTAATACGACTCACTATAGGGCGGCCGGAATTCGTCGACTGGATCCGGTACCGAGGAGATCTGCC
 GCC**CGGATCGCC**

ATGGCCGGGACCGTGCACCCGCTGCTTGGTGGTGGCGATGCTGCTCAGCTTGGACTTCCCGGGACAGG
 CGCAGCCCCCGCCGCGCCGCGGACGCCACCTGTCACCAAGTCCGCTCCTTCTCCAGAGACTGCAGCC
 CGGACTCAAGTGGGTGCCAGAACTCCCGTGCCAGGATCAGATTTGCAAGTATGTCTCCCTAAGGGCCCA
 ACATGCTGCTCAAGAAAGATGGAAGAAAAATACCAACTAACAGCACGATTGAACATGGAACAGCTGCTTC
 AGTCTGCAAAGGCCTTTGAAATTGTTGTTGCCATGCCAAGAACTACACCAATGCCATGTTCAAGAACAA
 CTACCAAGCCTGACTCCACAAGCTTTGAGTTTGTGGTGAATTTTTCACAGATGTGTCTCTACATC
 TTGGTTCTGACATCAATGTAGATGACATGGTCAATGAATTGTTGACAGCCTGTTCCAGTCATCTATA
 CCCAGCTAATGAACCCAGGCCTGCCTGATTCAGCCTTGGACATCAATGAGTGCCTCCGAGGAGCAAGACG
 TGACCTGAAAGTATTTGGGAATTTCCCAAGCTTATTATGACCCAGGTTTCCAAGTCACTGCAAGTCACT
 AGGATCTTCCTCAGGCTCTGAATCTTGAATGAAGTATCAACACAACCTGATCACCTGAAGTTACAGTA
 AGGACTGTGGCCGAATGCTCACCAGAATGTGGTACTGCTTACTGCCAGGGACTGATGATGGTTAAACC
 CTGTGGCGGTTACTGCAATGTGGTCAATGCAAGGCTGTATGGCAGGTGTGGTGGAGATTGACAAGTACTGG
 AGAGAATACATCTGTCCCTTGAAGAACTTGTGAATGGCATGTACAGAATCTATGACATGGAGAAGCTAC
 TGCTTGGTCTCTTTCAACAATCCATGATTCTATCCAGTATGCCAGAAGTGCAGGAAAGCTGACCAC
 CACTATTGGCAAGTATGTGCCATTCTCAACAACGCCAATATAGATCTGCTTATTATCCTGAAGATCTC
 TTTATTGACAAGAAAGTATTAAGTTGCTCATGTAGAACATGAAGAACTTATCCAGCCGAAGAAGGG
 AACTAATTCAGAAGTTGAAGTCTTTCATCAGCTTCTATAGTCTTGCCTGGCTACATCTGCAGCCATAG
 CCCTGTGGCGGAAAACGACACCCTTTGCTGGAATGGACAAGAAGTCTGGAGAGATACAGCCAAAAGGCA
 GCAAGGAATGGAATGAAAACCAGTTCAATCTCCATGAGCTGAAAATGAAGGGCCCTGAGCCAGTGGTCA
 GTCAAATTATTGACAACTGAAGCACATTAACCAGCTCCTGAGAACCATGTCTATGCCAAAAGGTAGAGT
 TCTGGATAAAAACCTGGATGAGGAAGGGTTTGAAGTGGAGACTGCGGTGATGATGAAGTGAAGTGCATT
 GGAGGCTCTGGTGAATGATAAAAGTGAAGAATCAGTCCGCTTCTTGCAGAACTGGCCTATGATC
 TGGATGTGGATGATGCGCCTGAAAACAGTCAGCAGGCAACTCCGAAGGACAACGAGATAAGCACCTTTCA
 CAACCTCGGGAACGTTTATTCCCGCTGAAGCTTCTCACCAGCATGGCCATCTCGGTGGTGTCTTCTTC
 TTCTGGTGAC

ACGCGTACGCGGCCGCTCGAGCAGAACTCATCTCAGAAGAGGATCTGGCAGCAAATGATATCCTGGATT
 ACAAGGATGACGACGATAAGGTTTAA

Protein Sequence:

>RC228459 representing NM_001164618
 Red=Cloning site Green=Tags(s)

MAGTVRTACLVVAMLLSLDFPGQAQPPPPPDATCQVRSFFQRLQPGLKWPETPVPGSDLQVCLPKGP
 TCCSRKMEEKYQLTARLNMEQLLSAKAFEIVVRHAKNYTNAMFKNNYPSLTPQAFEFVGEFFTDVSLYI
 LGSDINVDMMVNELFDSLFPVIYQLMNPGLPDSALDINECLRGARRDLKVFGNPKLIMTQVSKSLQVT
 RIFLQALNLGIEVINTTDHLKFSKDCGRMLTRMWYCSYCQLMMVKPCGGYCNVVMQGCMAGVVEIDKYW
 REYILSLEELVNGMYRIYDMENVLLGLFSTIHDSIQYVQKNAGKLTITIGKLCAHSQQRQYRSAYYPEDL
 FIDKKVLKVAHVEHEETLSSRRRELIQKLKSFISFYALPGYICSHSPAENDTLCWNGQELVERYSQKA
 ARNGMKNQFNHELKMKGPEPVVSIIDKLNHINQLLRMTSMMPKGRVLDKNLDEEGFESGDCGDDDECI
 GSGDGMIKVKNQLRFLAELAYDLVDVDDAPGNSQATPKDNEISTFHNLGNVHSPLKLLTSMASIVVCF
 FLVH

TRTRPLEQKLISEEDLAANDILDYKDDDDKV

Chromatograms:

https://cdn.origene.com/chromatograms/mk8067_e06.zip

Restriction Sites:

Sgfl-Mlul

Cloning Scheme:



ACCN: NM_001164618

ORF Size: 1692 bp

OTI Disclaimer: The molecular sequence of this clone aligns with the gene accession number as a point of reference only. However, individual transcript sequences of the same gene can differ through naturally occurring variations (e.g. polymorphisms), each with its own valid existence. This clone is substantially in agreement with the reference, but a complete review of all prevailing variants is recommended prior to use. [More info](#)

OTI Annotation: This clone was engineered to express the complete ORF with an expression tag. Expression varies depending on the nature of the gene.

Components: The ORF clone is ion-exchange column purified and shipped in a 2D barcoded Matrix tube containing 10ug of transfection-ready, dried plasmid DNA (reconstitute with 100 ul of water).

- Reconstitution Method:**
1. Centrifuge at 5,000xg for 5min.
 2. Carefully open the tube and add 100ul of sterile water to dissolve the DNA.
 3. Close the tube and incubate for 10 minutes at room temperature.
 4. Briefly vortex the tube and then do a quick spin (less than 5000xg) to concentrate the liquid at the bottom.
 5. Store the suspended plasmid at -20°C. The DNA is stable for at least one year from date of shipping when stored at -20°C.

RefSeq: [NM_001164618.2](#)

RefSeq ORF: 1695 bp

Locus ID: 2719

Cytogenetics: Xq26.2

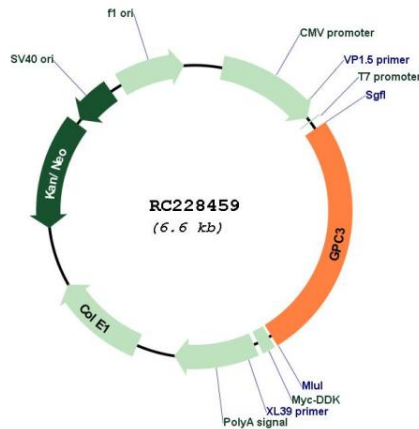
Protein Families: Druggable Genome

MW: 63.73 kDa

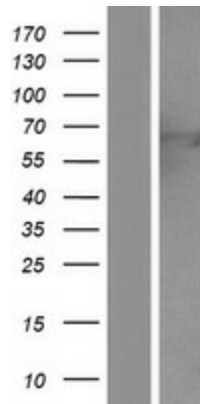
Gene Summary:

Cell surface heparan sulfate proteoglycans are composed of a membrane-associated protein core substituted with a variable number of heparan sulfate chains. Members of the glypican-related integral membrane proteoglycan family (GRIPS) contain a core protein anchored to the cytoplasmic membrane via a glycosyl phosphatidylinositol linkage. These proteins may play a role in the control of cell division and growth regulation. The protein encoded by this gene can bind to and inhibit the dipeptidyl peptidase activity of CD26, and it can induce apoptosis in certain cell types. Deletion mutations in this gene are associated with Simpson-Golabi-Behmel syndrome, also known as Simpson dysmorphia syndrome. Alternative splicing results in multiple transcript variants. [provided by RefSeq, Sep 2009]

Product images:



Circular map for RC228459



Western blot validation of overexpression lysate (Cat# [LY431487]) using anti-DDK antibody (Cat# [TA50011-100]). Left: Cell lysates from untransfected HEK293T cells; Right: Cell lysates from HEK293T cells transfected with RC228459 using transfection reagent MegaTran 2.0 (Cat# [TT210002]).