

Product datasheet for **RC228449**

c-Myb (MYB) (NM_001161657) Human Tagged ORF Clone

Product data:

Product Type:	Expression Plasmids
Product Name:	c-Myb (MYB) (NM_001161657) Human Tagged ORF Clone
Tag:	Myc-DDK
Symbol:	c-Myb
Synonyms:	c-myb; c-myb_CDS; Cmyb; efg
Mammalian Cell Selection:	Neomycin
Vector:	pCMV6-Entry (PS100001)
E. coli Selection:	Kanamycin (25 ug/mL)



[View online »](#)

ORF Nucleotide Sequence:

>RC228449 representing NM_001161657
 Red=Cloning site Blue=ORF Green=Tags(s)

TTTTGTAATACGACTCACTATAGGGCGGCCGGAATTCGTCGACTGGATCCGGTACCGAGGAGATCTGCC
 GCC**CGGATCGCC**

ATGGCCCCGAAGACCCCGGCACAGCATATATAGCAGTGACGAGGATGATGAGGACTTTGAGATGTGTGACC
 ATGACTATGATGGGCTGCTTCCCAAGTCTGAAAAGCGTCACTTGGGGAAAACAAGTGGACCCGGGAAGA
 GGATGAAAAAAGTGAAGAAGCTGGTGAACAGAATGGAACAGATGACTGGAAGATTATTGCCAATTATCTC
 CCGAATCGAACAGATGTGCAGTGCCAGCACCGATGGCAGAAAAGTAAACCCTGAGCTCATCAAGGGTC
 CTTGGACCAAAGAAGAAGATCAGAGAGTGATAGAGCTTGTACAGAAATACGGTCCGAAACGTTGGTCTGT
 TATTGCCAAGCACTTAAAGGGGAGAATTGGAAAACAATGTAGGGAGAGGTGGCATAACCCTTGAATCCA
 GAAGTTAAGAAAACCTCCTGGACAGAAGAGGAAGACAGAATTATTTACCAGGCACACAAGAGACTGGGA
 ACAGATGGGCAGAAATCGCAAAGCTACTGCCTGGACGAACTGATAATGCTATCAAGAACCCTGGAATTC
 TACAATGCGTCGGAAGGTGCAACAGGAAGTTATCTGCAGGAGTCTTCAAAGCCAGCCAGCCAGCAGTG
 GCCACAAGCTTCCAGAAGAACAGTCATTTGATGGGTTTTGCTCAGGCTCCGCCTACAGCTCAACTCCCTG
 CCACTGGCCAGCCCACTGTTAACACGACTATTCTATTACCACATTTCTGAAGCACAAAATGTCTCCAG
 TCATGTTCCATACCTGTAGCGTTACATGTAATATAGTCAATGTCCCTCAGCCAGCTGCCGAGCCATT
 CAGAGACACTATAATGATGAAGACCCTGAGAAGGAAAAGCGAATAAAGGAATTAGAATTGCTCCTAATGT
 CAACCGAGAATGAGCTAAAAGGACAGCAGGTGCTACCATTCTTAAACACTTCCAGTAACCATGAAAACTC
 AGACTTGGAAATGCCTTCTTTAACTTCCACCCCTCATTGGTCACAAATGACTGTTACAACACCATTT
 CATAGAGACCAGACTGTGAAAACCTCAAAGGAAAATACTGTTTTTAGAACCCAGCTATCAAAGGTCAA
 TCTTAGAAAGCTCTCAAGAACCTCACACCATTCAAACATGCACCTGACGCTCAAGAAAATAAATACGG
 TCCCTGAAGATGCTACCTCAGACACCCTCATCTAGTAGAAGATCTGCAGGATGTGATCAAACAGGAA
 TCTGATGAATCTGGAATTGTTGCTGAGTTTCAAGAAAATGGACCACCCTTACTGAAGAAAATCAAACAAG
 AGGTGGAATCTCCAAGTATAAATCAGGAACTTCTTCTGCTCACACCACTGGGAAGGGGACAGTCTGAA
 TACCCAAGTGTTCACGCAGACCTCGCTGTGGCAGATGCACCGAATATTCTTACAAGCTCCGTTTTAATG
 GCACCAGCATCAGAAGATGAAGACAATGTTCTCAAAGCATTACAGTACCTAAAAACAGGTCCTGGCGA
 GCCCTTGCAGCCTGTAGCAGTACCTGGGAACCTGCATCCTGTGGAAAGATGGAGGAGCAGATGACATC
 TTCAGTCAAGCTCGTAAATACGTGAATGCATTCTCAGCCCGGACGCTGGTCATG

ACGCGTACGCGGCCGCTCGAGCAGAAACTCATCTCAGAAGAGGATCTGGCAGCAAATGATATCCTGGATT
 ACAAGGATGACGACGATAAGGTTTAA

Protein Sequence:

>RC228449 representing NM_001161657
 Red=Cloning site Green=Tags(s)

MARRPRHSIYSSDEDDDFEMCDHDYDGLLPKSGKRHLGKTRWTRREEDEKLKLVQNGTDDWKVIANYL
 PNRTDVQCQHRWQKVLNPELIKGPWTKKEEDQRVIELVQKYGPKRWSVIAKHLKGRIGKQCRERWHNHLNP
 EVKKTSTWEEEDRIIYQAHKRLGNRWAEIAKLLPGRDINAIKNHNSTMRKVEQEGYLQESSKASQPAV
 ATSFQKNSHLMGFAQPPTAQLPATGQPTVNNDSYYHISEAQNVSSHVPYPVALHVNIVNPQAAAAI
 QRHYNDEDEPEKEKRIKELELLLMSTENELKGQVLPFLNTSSNHENSLEMPSTSTPLIGHKLTVTTPF
 HRDQTVKTQKENTVFRTPAIKRISILESSPRTPTPFKHALAAQEIKYGPLKMLPQTPSHLVEDLQDVIKQE
 SDESGIVAEFQENGPPLKIKIQEVE SPTDKSGNFFCSHHWEGDSLNTQLFTQTSVPADAPNILTSSVLM
 APASEDENVLKAFVTPKNRSLASPLQPCSSTWEPASCGKMEEQMTSSSQARKYVNAFSARTLVM

TRTRPLEQKLISEEDLAANDILDYKDDDDKV

Chromatograms:

https://cdn.origene.com/chromatograms/mk8067_b01.zip

Restriction Sites:

Sgfl-Mlul

Cloning Scheme:



ACCN: NM_001161657

ORF Size: 1665 bp

OTI Disclaimer: The molecular sequence of this clone aligns with the gene accession number as a point of reference only. However, individual transcript sequences of the same gene can differ through naturally occurring variations (e.g. polymorphisms), each with its own valid existence. This clone is substantially in agreement with the reference, but a complete review of all prevailing variants is recommended prior to use. [More info](#)

OTI Annotation: This clone was engineered to express the complete ORF with an expression tag. Expression varies depending on the nature of the gene.

Components: The ORF clone is ion-exchange column purified and shipped in a 2D barcoded Matrix tube containing 10ug of transfection-ready, dried plasmid DNA (reconstitute with 100 ul of water).

- Reconstitution Method:
1. Centrifuge at 5,000xg for 5min.
 2. Carefully open the tube and add 100ul of sterile water to dissolve the DNA.
 3. Close the tube and incubate for 10 minutes at room temperature.
 4. Briefly vortex the tube and then do a quick spin (less than 5000xg) to concentrate the liquid at the bottom.
 5. Store the suspended plasmid at -20°C. The DNA is stable for at least one year from date of shipping when stored at -20°C.

RefSeq: [NM_001161657.2](#)

RefSeq ORF: 1668 bp

Locus ID: 4602

UniProt ID: [P10242](#)

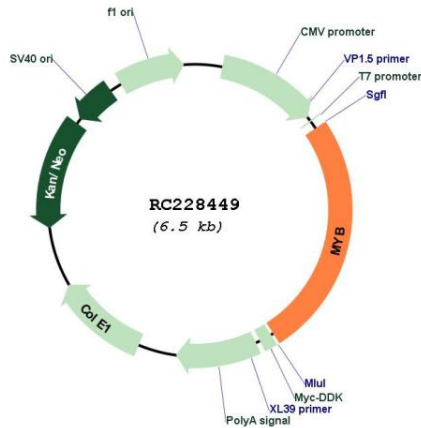
Cytogenetics: 6q23.3

Protein Families: Druggable Genome, ES Cell Differentiation/IPS, Stem cell - Pluripotency, Transcription Factors

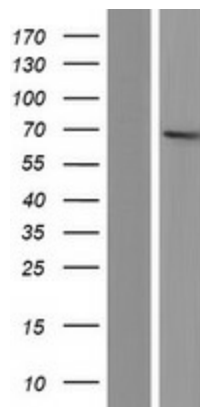
MW: 63 kDa

Gene Summary: This gene encodes a protein with three HTH DNA-binding domains that functions as a transcription regulator. This protein plays an essential role in the regulation of hematopoiesis. This gene may be aberrantly expressed or rearranged or undergo translocation in leukemias and lymphomas, and is considered to be an oncogene. Alternative splicing results in multiple transcript variants. [provided by RefSeq, Jan 2016]

Product images:



Circular map for RC228449



Western blot validation of overexpression lysate (Cat# [LY431477]) using anti-DDK antibody (Cat# [TA50011-100]). Left: Cell lysates from untransfected HEK293T cells; Right: Cell lysates from HEK293T cells transfected with RC228449 using transfection reagent MegaTran 2.0 (Cat# [TT210002]).