

Product datasheet for **RC228447**

ROD1 (PTBP3) (NM_001163790) Human Tagged ORF Clone

Product data:

Product Type:	Expression Plasmids
Product Name:	ROD1 (PTBP3) (NM_001163790) Human Tagged ORF Clone
Tag:	Myc-DDK
Symbol:	ROD1
Synonyms:	ROD1
Mammalian Cell Selection:	Neomycin
Vector:	pCMV6-Entry (PS100001)
E. coli Selection:	Kanamycin (25 ug/mL)



[View online »](#)

ORF Nucleotide Sequence:

>RC228447 representing NM_001163790
 Red=Cloning site Blue=ORF Green=Tags(s)

TTTTGTAATACGACTCACTATAGGGCGGCCGGAATTCGTCGACTGGATCCGGTACCGAGGAGATCTGCC
 GCC**CGGATCGCC**

ATGGATGGTGTGTTACAGATCTTATAACAGTCGGTTAAAGCGGGGATCTGATGAGCTTCTTTCTCTG
 GCATCATTAAACGGACCTTTACCATGAATAGTTCTACTCCTTCTACAGGTGTGTATGCTAATGGGAATGA
 CAGCAAGAAATTTAAACGAGATAGACCTCCCTGTTTCGCTTCCCGTGTCTCCATCTTCGAAAAATTCGA
 TGTGATGTACCGAAGCAGAGATCATATCATTAGGTCTACCATTGGCAAAGTAACTAATCTTTTGTGT
 TGAAAGGAAAAAGCCAGGCTTTCTAGAAATGGCTTCTGAGGAAGCTGCCGTTACTATGGTGAATTATTA
 CACTCCTATTACTCCTCACCTTCGAAGCCAGCCTGTTTATATTCAAGTATTCCAATCACAGAGAAGCTTAAG
 ACTGACAATCTACCTAATCAAGCTCGAGCCCAAGCTGCACTGCAGGCTGTCAAGTCCGTTCAATCAGGAA
 GCCTGGCCCTTTCTGGAGGTCTTCCAATGAAGGCACAGTCTACCTGGCAGAGCCCTGTGCTTCAAT
 AATTATTGAAAACCTCTTTACCCTGTTACCCTGGAAGTCTTTCATCAGATATTTCTAAATTTGGCACA
 GTCTTGAAGATTACACCTTTACAAAGAATAATCAGTTTCAAGCCTTGCTTCAGTATGCTGACCCAGTAA
 ATGCACATTATGCCAAAATGGCTCTGGATGGCCAGAATATCTATAATGCATGCTGCACTCTGCGCATTGA
 CTTCTCCAAGCTCACCAGCCTAATGTGAAATATAATAATGACAAAAGCAGAGACTTCACTCGCTTAGAC
 CTTCTACTGGTATGGCCAGCCATCCCTTGAACCCCTATGGCTGCTGCTTTTGGTGCACCCGGGTATAA
 TTTCTTACCATATGCAGGGGCTGCTGGATTTGCCCCAGCCATTGGATTTCTCAAGCTACAGGTCTATC
 AGTTCAGCTGTTCTGGAGCTCTTGGTCTCTCAAAATCACCTCTTCTGCTGCTGCAAGGATGGCC
 ATTCCTGGGCTAGTGGTATACCAGGAAATCTGTTCTACTCGTCACAAATCTCAATCCTGATCTTATCA
 CACCATGGGCTTTTTATCCTATTTGGAGTCTATGGTGTGATACATCGAGTGAAGATTATGTTTAAATA
 GAAAGAAAATGCCTTGGTTCAGATGGCGGATGCAAATCAAGCTCAGCTAGCAATGAACCATCTAAGTGGT
 CAGAGACTTTATGGGAAAGTGTCTGCTGCTACACTGTCCAAACATCAAGCAGTACAGCTTCTCGAGAGG
 GACAAGAAGACCAAGGTCTGACTAAGGATTTAGCAATAGTCTTTGCATCGCTTAAAAAGCCGGGCTC
 TAAAAACTCCAGAATATCTTTCCACCATCAGCCACTCTGCATCTTTCCAACATTTCCCTTCTGTTACA
 GTGGATGATCTGAAGAACCTTTTCATAGAAGCTGGATGTTCAAGTGAAGGCTTTTAAATCTTTAGAAA
 ATCGCAAAATGGCGCTCATTCAATTGGGATCTGTGGAAGAAGCAATTCAGGCCCTCATTGAGCTTCATAA
 CCATGACCTTGGAGAAAATCACCACCTCAGAGTTTCTTCTCAAATCTACAATC

ACGCGTACGCGGCCGCTCGAGCAGAAACTCATCTCAGAAGAGGATCTGGCAGCAAATGATATCCTGGATT
 ACAAGGATGACGACGATAAGGTTTAA

Protein Sequence:

>RC228447 representing NM_001163790
 Red=Cloning site Green=Tags(s)

MDGVVTDLITVGLKRGSDLELLSSGIINGPFTMNSSTPSTGVYANGNDSKKFKRDRPPCSPSRVHLHRKIP
 CDVTEAEIISLGLPFGKVTNLLMLKKGSKQAFLEMASEEAAVTMVNYYPITPHLRSQPVYIQYSNHRLEK
 TDNLPNQARAQAALQAVSAVQSGSLALSGGPSNEGTVLPGQSPVLRRIIENLFYPTLEVELHQIFSKFGT
 VLKIIITFKNNQFQALLQYADPVNAHYAKMALDGQNIYNACCTLRIDFSKLSLNVKYNNDKSRDFTRLD
 LPTGDGQPSLEPPMAAFGAPGISSPYAGAAGFAPAIGFPQATGLSVPVAVPGALGPLTITSSAVTGRMA
 IPGASGIPGNSVLLVTNLPDLITPHGLFILFGVYGDVHRVKIMFNKKNALVQMADANQAQLAMNHLSG
 QRLYGKVLRAVQVQLPREGQEDQGLTKDFSNSPLHRFKKPGSKNFQNIFFPPSATLHLSNIPPSVT
 VDDLKNLFI EAGCSVKAFKFFQKDRKMALIQLSVEEAIQALIELHNHDLGENHHLRVFSKSTI

TRTRPLEQKLI SEEDLAANDILDYKDDDDKV

Chromatograms:

https://cdn.origene.com/chromatograms/mk8038_c12.zip

Restriction Sites:

Sgfl-MluI

Cloning Scheme:


ACCN: NM_001163790

ORF Size: 1665 bp

OTI Disclaimer: The molecular sequence of this clone aligns with the gene accession number as a point of reference only. However, individual transcript sequences of the same gene can differ through naturally occurring variations (e.g. polymorphisms), each with its own valid existence. This clone is substantially in agreement with the reference, but a complete review of all prevailing variants is recommended prior to use. [More info](#)

OTI Annotation: This clone was engineered to express the complete ORF with an expression tag. Expression varies depending on the nature of the gene.

Components: The ORF clone is ion-exchange column purified and shipped in a 2D barcoded Matrix tube containing 10ug of transfection-ready, dried plasmid DNA (reconstitute with 100 ul of water).

- Reconstitution Method:**
1. Centrifuge at 5,000xg for 5min.
 2. Carefully open the tube and add 100ul of sterile water to dissolve the DNA.
 3. Close the tube and incubate for 10 minutes at room temperature.
 4. Briefly vortex the tube and then do a quick spin (less than 5000xg) to concentrate the liquid at the bottom.
 5. Store the suspended plasmid at -20°C. The DNA is stable for at least one year from date of shipping when stored at -20°C.

RefSeq: [NM_001163790.2](#), [NP_001157262.1](#)

RefSeq ORF: 1668 bp

Locus ID: 9991

UniProt ID: [O95758](#)

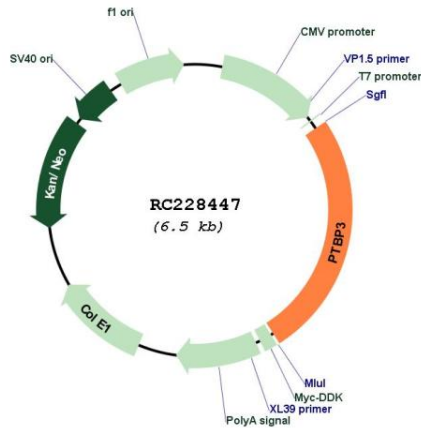
Cytogenetics: 9q32

Protein Families: Druggable Genome

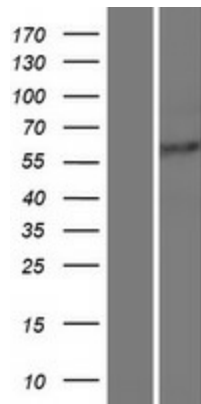
MW: 59.8 kDa

Gene Summary: The protein encoded by this gene binds RNA and is a regulator of cell differentiation. The encoded protein preferentially binds to poly(G) and poly(U) sequences in vitro. Several transcript variants encoding different isoforms have been found for this gene. [provided by RefSeq, Oct 2011]

Product images:



Circular map for RC228447



Western blot validation of overexpression lysate (Cat# [LY431475]) using anti-DDK antibody (Cat# [TA50011-100]). Left: Cell lysates from untransfected HEK293T cells; Right: Cell lysates from HEK293T cells transfected with RC228447 using transfection reagent MegaTran 2.0 (Cat# [TT210002]).