

Product datasheet for **RC228446**

PPP2R5C (NM_001161725) Human Tagged ORF Clone

Product data:

Product Type:	Expression Plasmids
Product Name:	PPP2R5C (NM_001161725) Human Tagged ORF Clone
Tag:	Myc-DDK
Symbol:	PPP2R5C
Synonyms:	B56G; B56gamma; PR61G
Mammalian Cell Selection:	Neomycin
Vector:	pCMV6-Entry (PS100001)
E. coli Selection:	Kanamycin (25 ug/mL)



[View online »](#)

ORF Nucleotide Sequence:

>RC228446 representing NM_001161725
 Red=Cloning site Blue=ORF Green=Tags(s)

TTTTGTAATACGACTCACTATAGGGCGGCCGGAATTCGTCGACTGGATCCGGTACCGAGGAGATCTGCC
 GCC**GCGATCGCC**

ATGCCGAATAAAAACAAGAAGGAGAAGAATCACCAAAGCAGGGAAGAGTGGAAAAAGTTCAAAAGAAG
 GACAAGACACAGTAGAATCAGAGGGAACAAGTCTGAAGAACCCTCAAGCCCTAAAGTACCACCTCCACT
 TCTTCCTGAGTTGCTGGTCTTATTTTTGGTGGGCTTCAAGGAAGAGATGTTCTCTGCTGATCAAGAG
 AAGCTTTTTATCCAGAAGTTACGTCACTGTTGCGTCTCTTTGACTTTGTTTCTGATCCACTAAGTGACC
 TAAAGTGGAAAGGAAAGTAAAACGAGCTGCTTAAAGTGAATGGTAGAATATATCACCCATAATCGGAATGT
 GATCACAGAGCCTATTTACCCAGAAGTAGTCCATATGTTTGCAGTTAACATGTTTTCGAACATTACCACCT
 TCCTCCAATCCTACGGGAGCGGAATTTGACCCGGAGGAAGATGAACCAACGTTAGAAGCAGCCTGGCCTC
 ATCTACAGCTTGTATGAATTTTTCTTAAGATTTTTAGAGTCTCCAGATTTCCAACCTAATATAGCGAA
 GAAATATATTGATCAGAAGTTTGTATTGCAGCTTTTAGAGCTTTTACAGTGAAGATCCTCGGGAGAGA
 GATTTTCTTAAAACCACCTTACAGAATCTATGGGAAATTCCTAGGCTTGAGAGCTTACATCAGAAAAC
 AGATAAATAATATATTTTATAGGTTTATTTATGAAACAGAGCATCATAATGGCATAGCAGAGTTACTGGA
 AATATTGGGAAGTATAATTAATGGATTTGCCTTACCCTAAAAGAAGAGCACAAGATTTTCTTATTGAAG
 GTGTTACTACCTTTGCACAAAGTGAATCTCTGAGTGTCTACCATCCCCAGCTGGCATACTGTGTAGTGC
 AGTTTTTAGAAAAGGACAGCACCTCACGGAACAGTGGTGTAGGCACTTCTCAAATACTGGCCAAAAGAC
 TCACAGTCCAAAAGAAGTAAATGTTCTTAAACGAATTAGAAGAGATTTTAGATGTCATTGAACCATCAGAA
 TTTGTGAAGATCATGGAACCCCTCTCCGGCAGTTGGCCAAATGTGTCTCCAGCCACACTCCAGGTGG
 CAGAGCAGCTCTCTATTACTGGAATAATGAATACATCATGAGTTAATCAGTGACAACGACGCAAGAT
 TCTGCCCATCATGTTTCTTCTTGTACCGCAACTCAAAGACCCATTGGAACAAGACAATACATGGCTTG
 ATATACAACGCCCTGAAGCTCTCATGGAGATGAACCAAAAGCTATTTGATGACTGTACACAACAGTTCA
 AAGCAGAGAACTAAAAGAGAAGCTAAAATGAAAGAACGGGAAGAAGCATGGGTAAAATAGAAAATCT
 AGCCAAAGCCAATCCCCAGTACACAGTGTATAGTCAAGCCAGCACCATGAGCATTCCGGTTGCAATGGAG
 ACAGATGGGCCTTTATTTGAAGATGTGCAGATGCTGAGAAAGACAGTGAAGGACGAGGCTCATCAGGCAC
 AGAAAGATCCGAAGAAGGACCGTCTCTTGCACGCCGAAGTCCGAGCTGCCTCAGGACCCACACCAA
 GAAAGCCTTGAAGCTCACTGCAGGGCCGATGAGCTGGCCTCCCAGGACGGCCGC

ACGCGTACGCGGCCGCTCGAGCAGAACTCATCTCAGAAGAGGATCTGGCAGCAAATGATATCCTGGATT
 ACAAGGATGACGACGATAAGGTTTAA

Protein Sequence:

>RC228446 representing NM_001161725
 Red=Cloning site Green=Tags(s)

MPNKNKKEKESPKAGKSGKSSKEGQDVESEGTSPPEPSSPKVPPPLLPELLVLIFGGLQGRDVPADQE
 KLFIQKLRQCCVLFDFVSDPLSDLKWKEVKRAALSEMVEYITHNRNVITEPIYPEVVMFAVNMFRLLPP
 SSNPTGAEFDPEEDEPTLEAAWPHLQLVYEFFLRFLFESPDFQPNIAKKYIDQKFVLQLELFDSEDPRE
 DFLKTTLHRIYGFGLRAYIRKQINNIFYRFIYETEHNGIAELLEILGSIINGFALPLKEEHKIFLLK
 VLLPLHKVKSLSVYHPQLAYCVVQFLEKDSTLTPVVMALLKYWPKTHSPKEVMFLNELEEILDVIEPSE
 FVKIMEPLFRQLAKCVSSPHFQVAERALYYWNNEYIMSLISDNAAKILPIMFPSLYRNSKTHWNKTIHGL
 IYNALKLFMEMNQKLFDDCTQQFKAELKEKLMKEREAAWVKIENLAKANPQYTVYSQASTMSIPVAME
 TDGPLFEDVQMLRKTVKDEAHQAQKDPKKDRPLARRKSELQDPHTKKALEAHCRADELASQDGR

TRTRPLEQKLISEEDLAANDILDYKDDDDKV

Chromatograms:

https://cdn.origene.com/chromatograms/mk8067_a12.zip

Restriction Sites:

SgfI-MluI

Cloning Scheme:


ACCN: NM_001161725

ORF Size: 1665 bp

OTI Disclaimer: The molecular sequence of this clone aligns with the gene accession number as a point of reference only. However, individual transcript sequences of the same gene can differ through naturally occurring variations (e.g. polymorphisms), each with its own valid existence. This clone is substantially in agreement with the reference, but a complete review of all prevailing variants is recommended prior to use. [More info](#)

OTI Annotation: This clone was engineered to express the complete ORF with an expression tag. Expression varies depending on the nature of the gene.

Components: The ORF clone is ion-exchange column purified and shipped in a 2D barcoded Matrix tube containing 10ug of transfection-ready, dried plasmid DNA (reconstitute with 100 ul of water).

Reconstitution Method:

1. Centrifuge at 5,000xg for 5min.
2. Carefully open the tube and add 100ul of sterile water to dissolve the DNA.
3. Close the tube and incubate for 10 minutes at room temperature.
4. Briefly vortex the tube and then do a quick spin (less than 5000xg) to concentrate the liquid at the bottom.
5. Store the suspended plasmid at -20°C. The DNA is stable for at least one year from date of shipping when stored at -20°C.

RefSeq: [NM_001161725.1](#), [NP_001155197.1](#)

RefSeq ORF: 1668 bp

Locus ID: 5527

UniProt ID: [Q13362](#)

Cytogenetics: 14q32.31

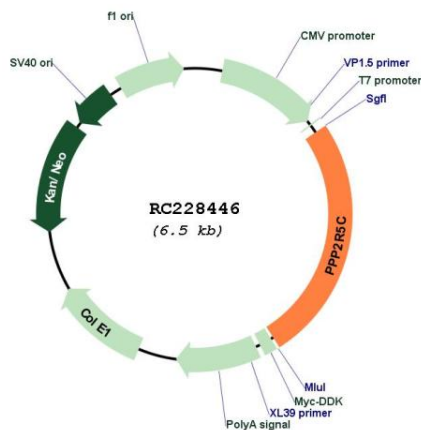
Protein Families: Druggable Genome, Phosphatase

Protein Pathways: Oocyte meiosis, Wnt signaling pathway

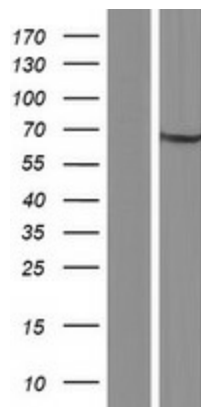
MW: 64.1 kDa

Gene Summary: The product of this gene belongs to the phosphatase 2A regulatory subunit B family. Protein phosphatase 2A is one of the four major Ser/Thr phosphatases, and it is implicated in the negative control of cell growth and division. It consists of a common heteromeric core enzyme, which is composed of a catalytic subunit and a constant regulatory subunit, that associates with a variety of regulatory subunits. The B regulatory subunit might modulate substrate selectivity and catalytic activity. This gene encodes a gamma isoform of the regulatory subunit B56 subfamily. Alternatively spliced transcript variants encoding different isoforms have been identified. [provided by RefSeq, Jul 2008]

Product images:



Circular map for RC228446



Western blot validation of overexpression lysate (Cat# [LY431474]) using anti-DDK antibody (Cat# [TA50011-100]). Left: Cell lysates from untransfected HEK293T cells; Right: Cell lysates from HEK293T cells transfected with RC228446 using transfection reagent MegaTran 2.0 (Cat# [TT210002]).