

Product datasheet for **RC228445**

DISC1 (NM_001164548) Human Tagged ORF Clone

Product data:

Product Type:	Expression Plasmids
Product Name:	DISC1 (NM_001164548) Human Tagged ORF Clone
Tag:	Myc-DDK
Symbol:	DISC1
Synonyms:	C1orf136; SCZD9
Mammalian Cell Selection:	Neomycin
Vector:	pCMV6-Entry (PS100001)
E. coli Selection:	Kanamycin (25 ug/mL)



[View online »](#)

ORF Nucleotide Sequence:

>RC228445 representing NM_001164548
 Red=Cloning site Blue=ORF Green=Tags(s)

TTTTGTAATACGACTCACTATAGGGCGGCCGGGAATTCGTCGACTGGATCCGGTACCGAGGAGATCTGCC
 GCC**CGGATCGCC**

ATGCCAGGCGGGGTCTCAGGGCGCCACGCCCGCCGGCGGGCGGCGGTGAGCCACCGCGCAGGCA
 GCCGGATTGCTTACCACCTGCAGCGTGCCTTCGGAGGCGCGGCTGGCACGGAGCCGGCTACATGAG
 AAGCTCGACAGGGCCTGGGATCGGGTCTTTCCCCAGCAGTGGGCACACTGTTCCGGTCCAGGAGGG
 GTGTCTGGCGAGGAGTCCACCCTCGGAGTCCAGGGCCAGACAGTGTGGCCTTGACTCGAGAGGCTCT
 TGGTCCGGAGCCCTGTTCCAAGAGTGCAGCAGCCCTACTGTGACCTCTGTGAGAGGAACCTCGGC
 CACTTTGGGATTGAGCTCAGAGGTGGCACCAGATTGCCTGACAGGCTTAGCTGGCCGTGGCCCTGGGAGT
 GCTGGGTGGCAGCAAGAGTTTGCAGCCATGGATAGTTCTGAGACCCTGGACGCCAGCTGGGAGGCAGCT
 GCAGCGATGGAGCAAGGCGTGTCCGGCCAGCAGGCTCTCTGCCATCAGCAGAGTTGAGTAGCAACAGCTG
 CAGCCCTGGCTGTGGCCCTGAGGTCCCCCAACCCTCCTGGCTCTCACAGTGCCTTTACCTCAAGCTTT
 AGCTTTATTCCGGCTCTCGCTTGGCTCTGCCGGGAACGTGGAGAAGCAGAAGGCTGCCACCATCCAGAG
 AGGCTGAGTCCCATTGCCAGAGCCCCAGGAGATGGGAGCCAAAGCTGCCAGCTTGGACGGGCTCACGA
 GGACCCGCGATGTCTCTCGGCCCTTCACTCTTGGCTACACGGGTCTCTGCAGACTTGGCCAGGCC
 GCAAGGAACAGCTCCAGGCCAGAGCGTGACATGCATTCTTACCAGACATGGACCCTGGCTCCTCCAGTT
 CTCTGGATCCCTCACTGGCTGGCTGTGGTGGTGTGGGAGCAGCGGCTCAGGGGATGCCACTCTTGGGA
 CACCCTGCTCAGGAAATGGGAGCCAGTGTGCGGGACTGCCTGCTGAGAAACCGGAGGCAGATGGAGGTA
 ATATCCTTAAGATTAACACTTACAGAACTTACAGAAAGTGCAGTTGAGAATGATGATTATGATAAAGCTG
 AGAGCTTACAACAAAGATTAGAAGACTTGAACAAGAGAAAATCAGCCTGCACCTTCAACTTCTCAAG
 GCAGCCAGCTCTTAGCAGTTTCTGGGTACCTGGCAGCACAAAGTCCAGGCTGCCTTGGCCGTGGGGCC
 ACTCAGCAGGCCAGCGGAGATGACACCCACACCCCACTGAGAATGGAGCCGAGGCTGTTGGAACCCACTG
 CTCAGGACAGCTTGCACGTGTCCATCACGAGACGAGACTGGCTTCTTCCAGAAAAGCAGCAGCTACAGAA
 AGAAATCGAAGCTCTCCAAGCAAGGATGTTTGTGCTGGAAGCCAAAGATCAACAGCTGAGAAGGGAAATA
 GAGGAGCAAGAGCAGCAACTCCAGTGGCAGGGCTGCGACCTGACCCCACTGGTGGCCAGCTGTCCCTGG
 GTCAGCTGCAGGAGGTCAGCAAGGCTTGCAGGACACCCTGGCCCTCAGCCGGTCAGATTCCTTCCATGC
 AGAGCCACCGAAACCATAAGGAGGAAACCATTCTGGACGGC

ACGCGTACGCGGCCGCTCGAGCAGAAACTCATCTCAGAAGAGGATCTGGCAGCAAATGATATCCTGGATT
 ACAAGGATGACGACGATAAGGTTTAA

Protein Sequence:

>RC228445 representing NM_001164548
 Red=Cloning site Green=Tags(s)

MPGGGPQGAPAAAGGGVSHRAGSRDCLPPAACFRRLARRPGYMRSSSTGPGIGFLSPAVGTLFRFPGG
 VSGEESHSESRARQCGLDSRGLLVRSVSKSAAAPT VTSVRGTSAHFGIQLRGGTRLPDRLSWPCGPGS
 AGWQQEF AAMDSSETLDASWEACSDGARRVRAAGSLPSAELSSNSCSPGCGPEVPPTPPGSHSAFTSSF
 SFIRLSLGSAGERGEAEGCPPSREAESHCQSPQEMGAKAASLDGPHEDPRCLSRPFSLLATRVSADLAQA
 ARNSSRPERDMHSLPMDPGSSSLDPSLAGCGGDGSSGSDAHSWDTLLRKWEPVLRDCLLRNRQMEV
 ISLRKLKQLQEDAVENDDYDKAETLQQRLEDLEQEKISLHFQLPSRQPALSSFLGHAAQVQAALRRGA
 TQQASGDDTHTPLRMEPRLLLEPTAQDSLHVSITRRDWLLQEKQQLQKEIEALQARMFVLEAKDQQLRREI
 EEQEQLQWQGDLTPLVGQLSLGQLQEVSKALQDTLASAGQIPFHAEPPEPPIRRKPFLLDG

TRTRPLEQKLISEEDLAANDILDYKDDDDKV

Chromatograms:

https://cdn.origene.com/chromatograms/mk8066_h01.zip

Restriction Sites:

Sgfl-MluI

Cloning Scheme:

ACCN: NM_001164548

ORF Size: 1653 bp

OTI Disclaimer: Due to the inherent nature of this plasmid, standard methods to replicate additional amounts of DNA in E. coli are highly likely to result in mutations and/or rearrangements. Therefore, OriGene does not guarantee the capability to replicate this plasmid DNA. Additional amounts of DNA can be purchased from OriGene with batch-specific, full-sequence verification at a reduced cost. Please contact our customer care team at custsupport@origene.com or by calling 301.340.3188 option 3 for pricing and delivery.

The molecular sequence of this clone aligns with the gene accession number as a point of reference only. However, individual transcript sequences of the same gene can differ through naturally occurring variations (e.g. polymorphisms), each with its own valid existence. This clone is substantially in agreement with the reference, but a complete review of all prevailing variants is recommended prior to use. [More info](#)

OTI Annotation: This clone was engineered to express the complete ORF with an expression tag. Expression varies depending on the nature of the gene.

Components: The ORF clone is ion-exchange column purified and shipped in a 2D barcoded Matrix tube containing 10ug of transfection-ready, dried plasmid DNA (reconstitute with 100 ul of water).

Reconstitution Method:

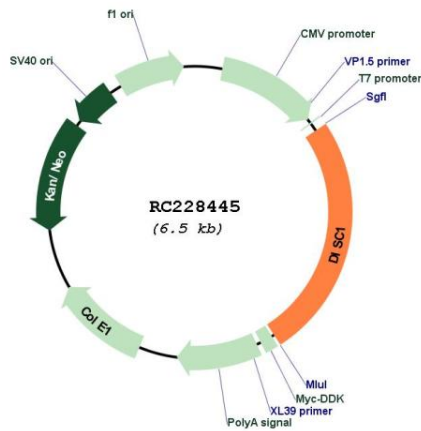
1. Centrifuge at 5,000xg for 5min.
2. Carefully open the tube and add 100ul of sterile water to dissolve the DNA.
3. Close the tube and incubate for 10 minutes at room temperature.
4. Briefly vortex the tube and then do a quick spin (less than 5000xg) to concentrate the liquid at the bottom.
5. Store the suspended plasmid at -20°C. The DNA is stable for at least one year from date of shipping when stored at -20°C.

RefSeq: [NM_001164548.1](#), [NP_001158020.1](#)

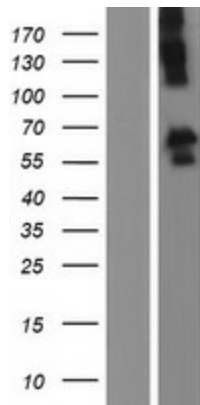
RefSeq Size: 2603 bp
 RefSeq ORF: 1656 bp
 Locus ID: 27185
 Cytogenetics: 1q42.2
 MW: 59.3 kDa

Gene Summary: This gene encodes a protein with multiple coiled coil motifs which is located in the nucleus, cytoplasm and mitochondria. The protein is involved in neurite outgrowth and cortical development through its interaction with other proteins. This gene is disrupted in a t(1;11) (q42.1;q14.3) translocation which segregates with schizophrenia and related psychiatric disorders in a large Scottish family. Alternate transcriptional splice variants, encoding different isoforms, have been characterized. [provided by RefSeq, Jul 2008]

Product images:



Circular map for RC228445



Western blot validation of overexpression lysate (Cat# [LY431473]) using anti-DDK antibody (Cat# [TA50011-100]). Left: Cell lysates from untransfected HEK293T cells; Right: Cell lysates from HEK293T cells transfected with RC228445 using transfection reagent MegaTran 2.0 (Cat# [TT210002]).