

Product datasheet for **RC228444**

PLA2G4C (NM_001159322) Human Tagged ORF Clone

Product data:

Product Type:	Expression Plasmids
Product Name:	PLA2G4C (NM_001159322) Human Tagged ORF Clone
Tag:	Myc-DDK
Symbol:	PLA2G4C
Synonyms:	CPLA2-gamma
Mammalian Cell Selection:	Neomycin
Vector:	pCMV6-Entry (PS100001)
E. coli Selection:	Kanamycin (25 ug/mL)



[View online »](#)

ORF Nucleotide Sequence:

>RC228444 representing NM_001159322
 Red=Cloning site Blue=ORF Green=Tags(s)

TTTTGTAATACGACTCACTATAGGGCGGCCGGAATTCGTCGACTGGATCCGGTACCGAGGAGATCTGCC
 GCC**CGCATCGCC**

ATGCGCACACGCCCCAGACCCAGGCTCAGGAGGACTGAGAATTTCTGACCCAGTGCACCATGGGAAGA
 AAGAAGAAAAGGCGGCCGTGGAGAGACGAAGACTTCATGTGCTGAAAGCTCTGAAGAAGCTAAGGATTGA
 GGCTGATGAGGCCCCAGTTGTTGCTGTGCTGGGCTCAGGCGGAGGACTGCGGGCTCACATTGCCTGCCTT
 GGGTCTCTGAGTGAGATGAAAGAACAGGGCCTGTTGGATGCCGTCACGTACCTCGCAGGGGTCTCTGGAT
 CCATTGGGCAATATCTTCTCTACACCAATGATGGTGACATGGAAGCTCTCGAGGCTGACCTGAAACA
 TCGATTTACCCGACAGGAGTGGGACTTGGCTAAGAGCCTACAGAAAACCATCCAAGCAGCGAGGTCTGAG
 AATTACTCTGACCGACTTCTGGGCTACATGGTTATCTCTAAGCAAACCAGAGAACTGCCGGAGTCTC
 ATTTGTCCAATATGAAGAAGCCCGTGAAGAAGGGACACTACCTACCCAATATTTGACGCCATTGACAA
 TGACCTGCAACCTTCTGGCAGGAGCAAGAGCACCAGAGACCTGGTTCGAGTTCACCCCTACCACGCT
 GGCTTCTCTGCACTGGGGCCTTTGTTTCCATAACCCACTTCGGAAGCAAATTAAGAAGGGAAGACTGG
 TCAGAACTCACCTGAGAGAGACCTGACTTTCCTGAGAGGTTTATGGGGAAGTGCTTGGTAACTGA
 AGTCATTAGGGAATACATTTTGGACAGTTAAGGAATCTGACCCTGAAAGGTTTATGGAGAAGGGCTGTT
 GCTAATGCTAAAAGCATTGGACACCTTATTTTGGCCGATTACTGAGGCTGCAAGAAAGTTCACAAGGGG
 AACATCTCCCCAGAAGATGAAGGCGGTGAGCCTGAACACACCTGGCTGACTGAGATGCTCGAGAATTG
 GACCAGGACCTCCCTGAAAAAGCAGGAGCAGCCCATGAGGACCCGAAAGGAAAGGCTCACTCAGTAAC
 TTGATGGATTTTGTGAAGAAAACAGGCATTTGCGCTTCAAAGTGGGAATGGGGGACCACCTACAACCTCC
 TGTACAAAACCGGTGGCATCCGGGACAAGATAATGAGCAGCCGGAAGCACCTCCACCTGGTGGATGCTGG
 TTAGCCATCAACACTCCCTTCCCACTCGTGTGCCCCGACGCGGGAGGTTACCTCATCTCTCCTTC
 GACTTCAGTGCCGAGATCCTTTGAGACCATCCGGGCTACCACTGACTACTGCCGCCCAACAAGATCC
 CCTTCCCAAGTAGAAGAGGCTGAGCTGGATTTGTTGTTCCAAGGCCCCGCGCAGCTGCTACATCTGAA
 AGGAGAACTGGACCAAGTGGTATGCATTTTCCCTGTTCAACATAGATGCCTGTGGAGGTGATATTGAG
 GCATGGAGTGACACATACGACACATTCAAGCTTGTGACACCTACTCTAGATGTGGTGGTCTACTCT
 TGGCATTAGCCAAGAAGAATGTCAGGGAAAACAAGAAGAAGATCCTTAGAGAGTTGATGAACGTGGCCGG
 GCTCTACTACCCGAAGGATAGTCCCGAAGTTGCTGCTGGCA

ACGCGTACGCGGCCGCTCGAGCAGAAACTCATCTCAGAAGAGGATCTGGCAGCAAATGATATCCTGGATT
 ACAAGGATGACGACGATAAGGTTTAA

Protein Sequence:

>RC228444 representing NM_001159322
 Red=Cloning site Green=Tags(s)

MRTRPRPRLRRTENFLTAVHHGKKEEKAVERRRLLHVLKALKKLRIEADAPVVAVLGSGGLRAHIACL
 GVLSEMKEQGLLDAVTYLAGVSGSTWAISSLYTNDGDMEALEADLKHRFTRQEWDLAKSLQKTIQAARSE
 NYSLTDFWAYMVISKQRELPESHLSNMKKPVEEGTLPYPIFAAIDNDLQPSWQEARAPETWFEFTPHHA
 GFSALGAFVSIHFSGKFKKGRVLRTHPERDLTFLRGLWGSALGNTEVIREYIFDQLRNLTLKGLWRRAV
 ANAKSIGHLIFARLLRLQESSQGEHPPPEDEGGEPEHTWLTEMLNWRTRSLEKQEPHEDPERKGSLSN
 LMDFVKKTGICASKWEWGTTNLFYKHGGIRDKIMSSRKHLHLVDAGLAINTPFPLVLPPTREVHLILSF
 DFSAGDPFETIRATTDYCRRHKIPFPQVEEAELDLWSKAPASCYILKGETGPVVMHFPLFNIDACGGDIE
 AWSDTYDTFKLADTYTLDVVVLLLALAKKNVRENKKKILRELMNVAGLYYPKDSARSCCLA

TRTRPLEQKLISEEDLAANDILDYKDDDDKV

Chromatograms:

https://cdn.origene.com/chromatograms/mk8066_g12.zip

Restriction Sites:

Sgfl-Mlul

Cloning Scheme:


ACCN: NM_001159322

ORF Size: 1653 bp

OTI Disclaimer: The molecular sequence of this clone aligns with the gene accession number as a point of reference only. However, individual transcript sequences of the same gene can differ through naturally occurring variations (e.g. polymorphisms), each with its own valid existence. This clone is substantially in agreement with the reference, but a complete review of all prevailing variants is recommended prior to use. [More info](#)

OTI Annotation: This clone was engineered to express the complete ORF with an expression tag. Expression varies depending on the nature of the gene.

Components: The ORF clone is ion-exchange column purified and shipped in a 2D barcoded Matrix tube containing 10ug of transfection-ready, dried plasmid DNA (reconstitute with 100 ul of water).

- Reconstitution Method:**
1. Centrifuge at 5,000xg for 5min.
 2. Carefully open the tube and add 100ul of sterile water to dissolve the DNA.
 3. Close the tube and incubate for 10 minutes at room temperature.
 4. Briefly vortex the tube and then do a quick spin (less than 5000xg) to concentrate the liquid at the bottom.
 5. Store the suspended plasmid at -20°C. The DNA is stable for at least one year from date of shipping when stored at -20°C.

RefSeq: [NM_001159322.1](#), [NP_001152794.1](#)

RefSeq ORF: 1656 bp

Locus ID: 8605

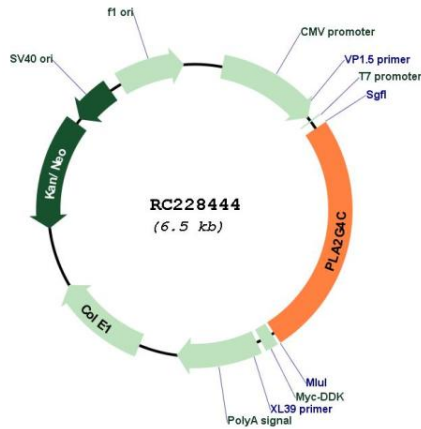
UniProt ID: [Q9UP65](#)

Cytogenetics: 19q13.33

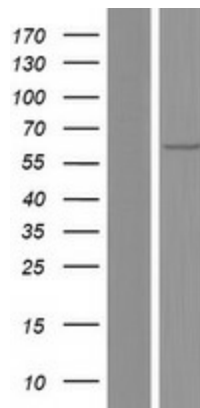
MW: 62.3 kDa

Gene Summary: This gene encodes a protein which is a member of the phospholipase A2 enzyme family which hydrolyzes glycerophospholipids to produce free fatty acids and lysophospholipids, both of which serve as precursors in the production of signaling molecules. The encoded protein has been shown to be a calcium-independent and membrane bound enzyme. Multiple transcript variants encoding different isoforms have been found for this gene. [provided by RefSeq, Apr 2009]

Product images:



Circular map for RC228444



Western blot validation of overexpression lysate (Cat# [LY431472]) using anti-DDK antibody (Cat# [TA50011-100]). Left: Cell lysates from untransfected HEK293T cells; Right: Cell lysates from HEK293T cells transfected with RC228444 using transfection reagent MegaTran 2.0 (Cat# [TT210002]).