

Product datasheet for **RC228443**

MKS1 (NM_001165927) Human Tagged ORF Clone

Product data:

Product Type:	Expression Plasmids
Product Name:	MKS1 (NM_001165927) Human Tagged ORF Clone
Tag:	Myc-DDK
Symbol:	MKS1
Synonyms:	BBS13; JBTS28; MES; MKS; POC12
Mammalian Cell Selection:	Neomycin
Vector:	pCMV6-Entry (PS100001)
E. coli Selection:	Kanamycin (25 ug/mL)



[View online »](#)

ORF Nucleotide Sequence:

>RC228443 representing NM_001165927
 Red=Cloning site Blue=ORF Green=Tags(s)

TTTTGTAATACGACTCACTATAGGGCGGCCGGAATTCGTCGACTGGATCCGGTACCGAGGAGATCTGCC
 GCC**CGGATCGCC**

ATGGCTGTGCCAGTTTCCTCATTTCACAGCGCACGAGGTCCTCGTTCGAGTCCACCTGCAAAGAATCA
 CATCAAGCAACTTCTTATTATCAGCCTGCTGCCGAGCTCGGAAGGACCTCATAGACTTGGCCACTTT
 TAGGCCTCAGCCAACTGCCAGTGGACACCGCCAGAGGAAGACGAAGAGGAGGAGATTGTGATTGGGTGG
 CAGGAGAAGCTCTTAGCCAGTTTGAAGTAGATCTGTACCAAAATGAAACAGCCTGTCAGAGTCTTTGG
 ATTATCAGTACCGTCAGGAGATCCTGAAGCTGGAGAATTCGGGTGGCAAGAAAAACCGACGAATCTTTAC
 CTACACTGACTCTGATAGATACACCAATTTGGAGGAGCACTGTCAGAGAATGACCACTGCAGCCAGCGAG
 GTGCCCTCATTCTTGGTCGAGCGAATGGCAAATGTCAGGCGTCGCCGCGCAGGACAGGCGAGGGATGGAGG
 GCGGCATCCTCAAGTCACGCATCGTCACCTGGGAGCCCTCAGAAGAGTTTGTGAGGAACAACCACGTCAT
 TAACACCCCTCTCAGACAATGCACATCATGGCAGACCTGGGGCCCTATAAAAAGCTTGGCTATAAGAAG
 TATGAACATGTCCTGTGTACTCTGAAGGTGGATAGCAATGGTGTGATCACAGTAAAGCCTGACTTACCGG
 GCCTCAAAGGACCTACAGGATTGAGACGGAGGGGAGAAGCAGGAGCTGTGAAATATACGATCGACAA
 TGTTCACCCACGCACAGCCGGAGGAGGAGGAGCGGGAACGGCGAGTGTCAAGGATCTTTATGGCCGG
 CACAAGGAGTATCTCAGCAGCCTCGTAGGCACCGACTTTGAGATGACTGTCCAGGTGCCCTCCGGCTCT
 TTGTAATGGAGAGGTCGTTTACGCCAAGGCTATGAGTATGACAATCTCTACGTCCACTTCTTTGTAGA
 ATTGCCAACTGCTCACTGGTCAAGCCAGCATTCCAGCAGCTCTCAGGAGTAACACAGACCTGCACCACC
 AAGTCCCTGGCAATGGACAAGGTGGCTCACTTCTCCTACCCATTACGTTTGAAGCCTTCTTCTCCATG
 AGGATGAATCTTCTGATGCACTCCCGAGTGGCTGTCTACTGTGAGGTCTCTCGTGGACTCTG
 GCAGAGGTACCGTGTGGAAGGCTATGGGGCTGTGGTGTGCTGCTGCCACTCCAGGCTCACACACCCTGACA
 GTCTCCACGTGGAGACCTGTGGAGCTTGGCAGCGTGGCTGAGCTGAGGAGTTTTTCATTGGCGTTCTC
 TGGAACTGGAGGACCTCTCTATGTACGGATACCAGGATCCTTCAAGGGGAACGCCTGAGCCGCTTTGG
 ACTCCGCACAGAGACCACAGGCACTGTCACCTCCGCTTGCAGTCTGTCAGCAGTCCAGGGCCTTCATG
 GAATCGAGCTCCCTTCAAAAAGGATGCGGAGTGTGTTGGACCGTCTGGAAGGTTTACGCCAGCAGAGTT
 CCATTACAATGTGCTAGAGGCCCTCCGTCGAGCCCGGCCGCATGCAGGAGGCCCGGGAAGCCTCCC
 GCAGGACCTAGTAGCCCTCTGGAACCCTGGTCTCC

ACGCGTACGCGGCCGCTCGAGCAGAAACTCATCTCAGAAGAGGATCTGGCAGCAAATGATATCCTGGATT
 ACAAGGATGACGACGATAAGGTTTAA

Protein Sequence:

>RC228443 representing NM_001165927
 Red=Cloning site Green=Tags(s)

MAVPVSSFAQRTRSFRVHLQRITSSNFLHYQPAELGKDLIDLATFRPQPTASGHRPEEDEEEEIVIGW
 QEKLFSQFEVDLYQNETACQSPLDYQYRQEILKLENSGGKKNRRIFTYTDSDRYTNLEEHQRMTTAASE
 VPSFLVERMANVRRRRQDRRGMEGGILKSRIVTWEPSEEFVRNNHVINTPLQTMHIMADLGPYKLGKYYK
 YEHVLTCLKVDSNGVITVKPDFTGLKGPYRIETEGEKQELWKYITDNVSPHAQPEEEERERRVFKDLYGR
 HKEYLSSLVGTDFEMTVPALRLFVNGEVVSAQGYEYDNLVYHFFVELPTAHWSSPAFQQLSGVTQTCTT
 KSLAMDVAHFSYPFTFEAFFLHEDESSDALPEWPVLYCEVLSLDFWQRYRVEGYGAVVLPATPGSHTLT
 VSTWRPVELGTVAELELRRFFIGGSLELEDLSYVRIPGSFKGERLSRFLRTETTGTVTFRHLCLQQSRAFM
 ESSSLQKRMRSVLDRLLEGFSQQSSIHNVLEAFRRARRRMQEAARESLPQDLVSPSGTLVS

TRTRPLEQKLISEEDLAANDILDYKDDDDKV

Chromatograms:

https://cdn.origene.com/chromatograms/mk8066_g05.zip

Restriction Sites:

Sgfl-Mlul

Cloning Scheme:


ACCN: NM_001165927

ORF Size: 1647 bp

OTI Disclaimer: The molecular sequence of this clone aligns with the gene accession number as a point of reference only. However, individual transcript sequences of the same gene can differ through naturally occurring variations (e.g. polymorphisms), each with its own valid existence. This clone is substantially in agreement with the reference, but a complete review of all prevailing variants is recommended prior to use. [More info](#)

OTI Annotation: This clone was engineered to express the complete ORF with an expression tag. Expression varies depending on the nature of the gene.

Components: The ORF clone is ion-exchange column purified and shipped in a 2D barcoded Matrix tube containing 10ug of transfection-ready, dried plasmid DNA (reconstitute with 100 ul of water).

Reconstitution Method:

1. Centrifuge at 5,000xg for 5min.
2. Carefully open the tube and add 100ul of sterile water to dissolve the DNA.
3. Close the tube and incubate for 10 minutes at room temperature.
4. Briefly vortex the tube and then do a quick spin (less than 5000xg) to concentrate the liquid at the bottom.
5. Store the suspended plasmid at -20°C. The DNA is stable for at least one year from date of shipping when stored at -20°C.

RefSeq: [NM_001165927.1](#), [NP_001159399.1](#)

RefSeq ORF: 1650 bp

Locus ID: 54903

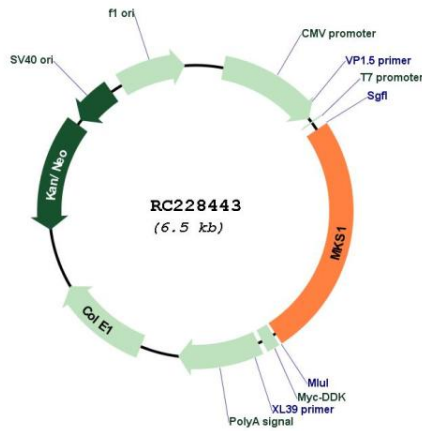
UniProt ID: [Q9NXB0](#)

Cytogenetics: 17q22

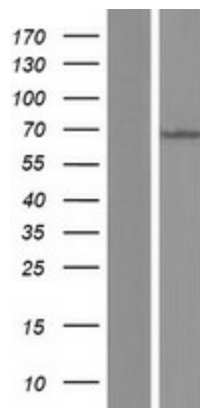
MW: 63.2 kDa

Gene Summary: The protein encoded by this gene localizes to the basal body and is required for formation of the primary cilium in ciliated epithelial cells. Mutations in this gene result in Meckel syndrome type 1 and in Bardet-Biedl syndrome type 13. Multiple transcript variants encoding different isoforms have been found for this gene. [provided by RefSeq, Sep 2009]

Product images:



Circular map for RC228443



Western blot validation of overexpression lysate (Cat# [LY431471]) using anti-DDK antibody (Cat# [TA50011-100]). Left: Cell lysates from untransfected HEK293T cells; Right: Cell lysates from HEK293T cells transfected with RC228443 using transfection reagent MegaTran 2.0 (Cat# [TT210002]).