

Product datasheet for **RC228433**

HNF1 beta (HNF1B) (NM_001165923) Human Tagged ORF Clone

Product data:

Product Type:	Expression Plasmids
Product Name:	HNF1 beta (HNF1B) (NM_001165923) Human Tagged ORF Clone
Tag:	Myc-DDK
Symbol:	HNF1 beta
Synonyms:	ADTKD3; FJHN; HNF-1-beta; HNF-1B; HNF1beta; HNF2; HPC11; LF-B3; LFB3; MODY5; RCAD; T2D; TCF-2; TCF2; VHNF1
Mammalian Cell Selection:	Neomycin
Vector:	pCMV6-Entry (PS100001)
E. coli Selection:	Kanamycin (25 ug/mL)



[View online »](#)

ORF Nucleotide Sequence:

>RC228433 representing NM_001165923
 Red=Cloning site Blue=ORF Green=Tags(s)

TTTTGTAATACGACTCACTATAGGGCGGCCGGAATTCGTCGACTGGATCCGGTACCGAGGAGATCTGCC
 GCC**CGGATCGCC**

ATGGTGTCCAAGCTCACGTCGCTCCAGCAAGAAGCTCTGAGCGCCCTGCTGAGCTCCGGGTACCAAGG
 AGGTGCTGGTTTCAGGCCTTGGAGGAGTTGCTGCCATCCCCGAAGCTTCGGGGTGAAGCTGGAGACGCTGCC
 CCTGTCCCTGGCAGCGGGCCGAGCCCACCAAGCCGGTCTTCCATACTCTACCAACGCGCCACGCC
 AAGGGCCGCTTGTCCGGCAGCAGGGGCTCCGAGGACGGCAGCAGCTATGACACACCTCCCATCTCAAGG
 AGCTGCAGGCGCTCAACACCGAGGAGGGCGGAGCAGCGGGCGGAGGTGGACCGGATGCTCAGTGAGGA
 CCCTTGGAGGGCTGCTAAAATGATCAAGGGTTACATGCAGCAACACAACATCCCCAGAGGGAGGTGGTC
 GATGTCACCGCCTGAACAGTCGCACCTCTCCAGCATCTCAACAAGGGCACCCCTATGAAGACCCAGA
 AGCGTGCCGCTCTGTACACCTGGTACGTCAGAAAGCAACGAGAGATCCTCCGACAGTTCACTCAACAGAG
 CCATGGGCTGGGCAGTCCGATGATGCCCTGCTCTGAGCCACCAACAAGAAGATGCGCCGCAACCGGTTT
 AAATGGGGGCCCCGCTCCAGCAAATCTTGTACAGGCCTACGATCGGCAAAAAGAACCCAGCAAGGAAG
 AGAGAGAGGCCTTAGTGGAGGAATGCAACAGGGCAGAATGTTTGCAGCGAGGGGTGTCCCCCTCCAAAGC
 CCACGGCTGGGCTCAAACCTTGGTCACTGAGGTCGGTGTCTACAACCTGGTTTGCAAACCGCAGGAAGGAG
 GAGGCAATCCGGCAAAAGCTGGCCATGGACGCCTATAGCTCCAACAGACTCACAGCCTGAACCTCTGCT
 TCTCCACGGCTCCCCCACCACAGCCAGCTCCTCTCTCCAAACAAGCTGTGAGGAGTGCCTACAG
 CCAGCAGGAAACAATGAGATCACTTCTCTCAACAATCAGTCACCATGGCAACAGCGCCATGGTGACC
 AGCCAGTCGGTTTTACAGCAAGTCTCCAGCCAGCCTGGACCCAGGCCACAATCTCTCTCACCTGATG
 GTAAAATGATCTCAGTCTCAGGAGGAGGTTTGGCCAGTCAGCACCTTGACGAATATCCACAGCCTCTC
 CCACCATAATCCCGCAATCTCAAACCTCATCATGACACCCCTCTCTGGAGTCATGGCAATTGCACAA
 AGCCTCAACACCTCCCAAGCACAGAGTGTCCCTGTCATCAACAGTGTGGCCGCGCAGCCTGGCAGCCCTGC
 AGCCCGTCCAGTTCTCCAGCAGCTGCACAGCCCTCACCAGCAGCCCTCATGCAGCAGAGCCAGGCGAG
 CCACATGGCCAGCAGCCCTTATGGCAGCTGTGACTCAGCTGCAGAACTCACACATGTACGCACACAAG
 CAGGAACCCCCAGTATCCACACCTCCCGTTTCCATCTGCAATGGTGGTCACAGATACCAGCAGCA
 TCAGTACACTACCAACATGTCTCAAGTAAACAGTGTCTCTACAAGCCTGG

ACGCGTACGCGGCCGCTCGAGCAGAAACTCATCTCAGAAGAGGATCTGGCAGCAAATGATATCTGGATT
 ACAAGGATGACGACGATAAGGTTTAA

Protein Sequence:

>RC228433 representing NM_001165923
 Red=Cloning site Green=Tags(s)

MVSKLTSLQQEELLSALLSSGVTKVFLVQALEELLSPNFGVKLETPLSPGSGAEPDTPKVFHTLTNGHA
 KGRLSGDEGEDDGYDTPPIKELQALNTEEAQRAEVDRMLSEDPWRAAKMIKGYMQHNIPQREV
 DVTGLNQSHLSQHLNKGTPMKTQKRAALYTWYVRKQREILRQFSQQSHGPGQSDDACSEPTNKKMRRNRF
 KWGPASQQLYQAYDRQKNPSKEEREALVEECNRAECLQGVSPSKAHGLGSLVTEVRVYNWVFANRRKE
 EAFRQKLAMDAYSNNQTHSLNPLL SHGSPHHQPS SPPNKL SGVRYSSQQGNNEITSSSTISHHGNSAMVT
 SQSVLQQVSPASLDPGHNLSPDGKMI SVSGGLPPVSTLTNIHSLSHHNPPQSQNLIMTPLSGVMAIAQ
 SLNTSQAQSVPVINSVAGSLAALQPVQFSQQLHSPHQPLMQQSPGSHMAQQPFMAAVTQLQNSHMYAHK
 QEPPQYSHTSRFPMSAMVVTDTSSISTLTNMSSSKQCPLQAW

TRTRPLEQKLISEEDLAANDILDYKDDDDKV

Chromatograms:

https://cdn.origene.com/chromatograms/mk8065_g07.zip

Restriction Sites:

Sgfl-Mlul

Cloning Scheme:


ACCN: NM_001165923

ORF Size: 1593 bp

OTI Disclaimer: The molecular sequence of this clone aligns with the gene accession number as a point of reference only. However, individual transcript sequences of the same gene can differ through naturally occurring variations (e.g. polymorphisms), each with its own valid existence. This clone is substantially in agreement with the reference, but a complete review of all prevailing variants is recommended prior to use. [More info](#)

OTI Annotation: This clone was engineered to express the complete ORF with an expression tag. Expression varies depending on the nature of the gene.

Components: The ORF clone is ion-exchange column purified and shipped in a 2D barcoded Matrix tube containing 10ug of transfection-ready, dried plasmid DNA (reconstitute with 100 ul of water).

- Reconstitution Method:**
1. Centrifuge at 5,000xg for 5min.
 2. Carefully open the tube and add 100ul of sterile water to dissolve the DNA.
 3. Close the tube and incubate for 10 minutes at room temperature.
 4. Briefly vortex the tube and then do a quick spin (less than 5000xg) to concentrate the liquid at the bottom.
 5. Store the suspended plasmid at -20°C. The DNA is stable for at least one year from date of shipping when stored at -20°C.

RefSeq: [NM_001165923.4](#)

RefSeq ORF: 1596 bp

Locus ID: 6928

UniProt ID: [P35680](#)

Cytogenetics: 17q12

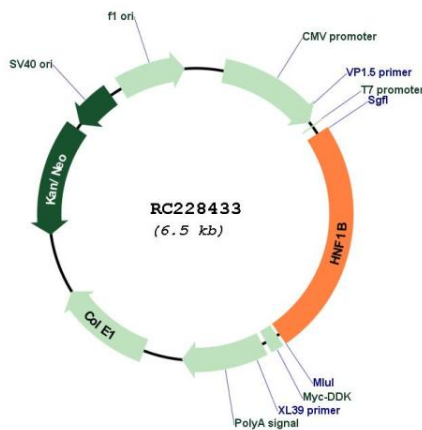
Protein Families: Druggable Genome, Embryonic stem cells, ES Cell Differentiation/IPS, Transcription Factors

Protein Pathways: Maturity onset diabetes of the young

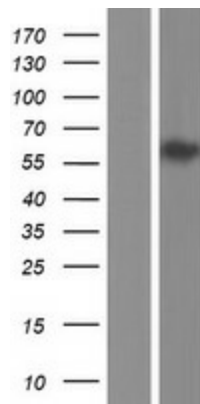
MW: 58.2 kDa

Gene Summary: This gene encodes a member of the homeodomain-containing superfamily of transcription factors. The protein binds to DNA as either a homodimer, or a heterodimer with the related protein hepatocyte nuclear factor 1-alpha. The gene has been shown to function in nephron development, and regulates development of the embryonic pancreas. Mutations in this gene result in renal cysts and diabetes syndrome and noninsulin-dependent diabetes mellitus, and expression of this gene is altered in some types of cancer. Multiple transcript variants encoding different isoforms have been found for this gene.[provided by RefSeq, Sep 2009]

Product images:



Circular map for RC228433



Western blot validation of overexpression lysate (Cat# [LY431461]) using anti-DDK antibody (Cat# [TA50011-100]). Left: Cell lysates from untransfected HEK293T cells; Right: Cell lysates from HEK293T cells transfected with RC228433 using transfection reagent MegaTran 2.0 (Cat# [TT210002]).