

Product datasheet for **RC228419**

Calcitonin receptor (CALCR) (NM_001164737) Human Tagged ORF Clone

Product data:

Product Type:	Expression Plasmids
Product Name:	Calcitonin receptor (CALCR) (NM_001164737) Human Tagged ORF Clone
Tag:	Myc-DDK
Symbol:	CALCR
Synonyms:	CRT; CT-R; CTR; CTR1
Vector:	pCMV6-Entry (PS100001)
E. coli Selection:	Kanamycin (25 ug/mL)
Cell Selection:	Neomycin



[View online »](#)

ORF Nucleotide Sequence:

>RC228419 representing NM_001164737
 Red=Cloning site Blue=ORF Green=Tags(s)

TTTTGTAATACGACTCACTATAGGGCGGCCGGAATTCGTCGACTGGATCCGGTACCGAGGAGATCTGCC
 GCC**CGCATCGCC**

ATGCAATTTTCTGGAGAGAAGATTAGTGGACAAGAGATCTTCAAAAATCAAAAATGAGGTTTCACATTTA
 CAAGCCGGTGCTTGGCACTGTTTCTTCTTAAATCACCCAACCCAATTCTTCCTGCCTTTTCAAATCA
 AACCTATCCAACAATAGAGCCCAAGCCATTTCTTTACGTCGTAGGACGAAAGAAGATGATGGATGCACAG
 TACAAATGCTATGACCGAATGCAGCAGTTACCCGCATACCAAGGAGAAGGTCCATATTGCAATCGCACCT
 GGGATGGATGGCTGTGCTGGGATGACACACCCGGCTGGAGTATTGCCTATCAGTTCTGCCAGATTATTT
 TCCGGATTTTATCCATCAGAAAAGTTACAAAATACTGTGATGAAAAGGTGTTTGGTTTAAACATCCT
 GAAAAAATCGAACCTGGTCCAATACTATGTGCAATGCTTTCCTCCTGAGAAAATGAAGAATGCAT
 ATGTTCTGTACTATTTGGCTATTGTGGTCATTCTTTGTCAATTTTACCCTAGTGATTTCCCTGGGGAT
 TTTCTGTGTTTTTTCAGAAAATTGACAATACTTTTCTTTGAATTGAAAATATAGGAAGGCATTGAGCCTT
 GGCTGCCAAAGGTAACCTGCACAAGAATGTTTCTTACTTACATTCTGAATTCTATGATTATCATCA
 TCCACCTGGTTGAAGTAGTACCCAATGGAGAGCTCGTGCGAAGGGACCCGGTGAGCTGCAAGATTTTGA
 TTTTTCCACCAGTACATGATGGCTGCAACTATTTCTGGATGCTCTGTGAAGGGATCTATCTTCATACA
 CTCATTGTGCTGGCTGTGTTTACTGAGAAGCAACGCTTGGGTTGTTTCTCTTGGGCTGGGGTTCC
 CGCTGGTGCCAACCACTATCCATGCTATTACCAGGGCCGTGACTTCAATGACAACCTGCTGGCTGAGTGT
 GGAAACCAATTTGCTTTACATAATCCATGGACCTGTGATGGCGCACTTGGTCAATTTCTTCTTTTG
 CTCAACATTTGCTGGGTGCTTGTGACCAAAATGAGGGAACCCATGAGGCGGAATCCACATGACTGGA
 AGGCTGTGAAGGCCACCATGATCCTTGTGCCCTGTGGAATCCAGTTTGTGCTCTTTCCCTGGAGAC
 TTCCAACAAGATGCTTGGGAAGATATGATTAGTGATGCACTCTCTGATTCTTTCCAGGGCTCTTT
 GTTGCGACCATCTACTGCTTCTGCAACAATGAGGTCCAAACCACCGTGAAGCGCAATGGGCCAAATTC
 AAATTCAGTGGAACAGCGTTGGGGAGGCGCCCTCCAACCGCTCTGCTCGCGCTGCAGCCGCTGCTGC
 GGAGGCTGGCGACATCCAATTTACATCTGCCATCAGGAGCTGAGGAATGAACCAGCCAACAACCAAGGC
 GAGGAGAGTGCTGAGATCATCCCTTTGAATATCATAGAGCAAGAGTCATCTGCT

**ACCGGTACGCGGCCGCTCGAGCAGAACTCATCTCAGAAGAGGATCTGGCAGCAATGATATCTGGATT
 ACAAGGATGACGACGATAAGGTTTAA**

Protein Sequence:

>RC228419 representing NM_001164737
 Red=Cloning site Green=Tags(s)

MQFSGEKISGQRDLQSKMRFTFTSRCLALFLLLNHPTPILPAFSNQTYPTIEPKPFLYVVGRRKMMDAQ
 YKCYDRMQQLPAYQEGPYCNRTWDGWLWDDTPAGVLSYQFCPDYFPDFPSEKVTKYCDEKGVWFKHP
 ENNRTWSNYTMCNAFTPEKLNAYVLYLAIVGHSLSIFTLVISLGIFFVFRKLTTFPLNWKYRKALSL
 GCQRVTLHKNMFLTYILNSMIIIIHLVEVVPNGELVRRDPVSKILHFFHQYMMACNYFWMLCEGIYLHT
 LIVVAVFTEKQLRWYLLGWGFPLVPTTIIHAITRAVYFNDNCWLSVETHLLYIIHGPVMAALVNVFFFL
 LNIIVRVLVTKMRETHEAESHMYLKAVKATMILVPLLGIQFVVFVWPRPSNKMLGKIYDYVMHSLIHFQGF
 VATIYCFCNNEVQTTVKRQWAQFKIQWNQRWRRPSNRSARAAAAAAEAGDIPIYIICHQELRNEPANNQG
 EESAELIPLNIIIEQESSA

TRTRPLEQKLISEEDLAANDILDYKDDDDKV

Chromatograms:

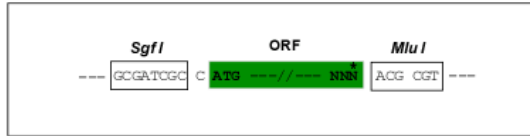
https://cdn.origene.com/chromatograms/mk8064_c01.zip

Restriction Sites:

Sgfl-Mlul

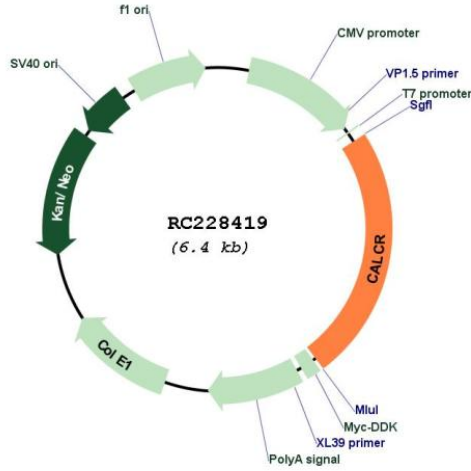
Cloning Scheme:

Cloning sites used for ORF Shutting:

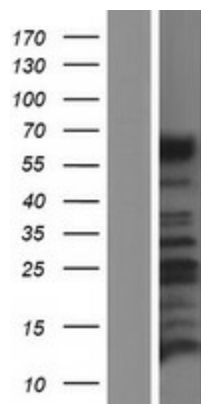


* The last codon before the Stop codon of the ORF

Plasmid Map:



ACCN:	NM_001164737
ORF Size:	1524 bp
OTI Disclaimer:	The molecular sequence of this clone aligns with the gene accession number as a point of reference only. However, individual transcript sequences of the same gene can differ through naturally occurring variations (e.g. polymorphisms), each with its own valid existence. This clone is substantially in agreement with the reference, but a complete review of all prevailing variants is recommended prior to use. More info
OTI Annotation:	This clone was engineered to express the complete ORF with an expression tag. Expression varies depending on the nature of the gene.
Components:	The ORF clone is ion-exchange column purified and shipped in a 2D barcoded Matrix tube containing 10ug of transfection-ready, dried plasmid DNA (reconstitute with 100 ul of water).
Reconstitution Method:	<ol style="list-style-type: none">1. Centrifuge at 5,000xg for 5min.2. Carefully open the tube and add 100ul of sterile water to dissolve the DNA.3. Close the tube and incubate for 10 minutes at room temperature.4. Briefly vortex the tube and then do a quick spin (less than 5000xg) to concentrate the liquid at the bottom.5. Store the suspended plasmid at -20°C. The DNA is stable for at least one year from date of shipping when stored at -20°C.
RefSeq:	NM_001164737.1 , NP_001158209.1
RefSeq ORF:	1473 bp
Locus ID:	799
UniProt ID:	P30988
Cytogenetics:	7q21.3
Protein Families:	Druggable Genome, GPCR, Transmembrane
Protein Pathways:	Neuroactive ligand-receptor interaction
MW:	59.2 kDa
Gene Summary:	This gene encodes a high affinity receptor for the peptide hormone calcitonin and belongs to a subfamily of seven transmembrane-spanning G protein-coupled receptors. The encoded protein is involved in maintaining calcium homeostasis and in regulating osteoclast-mediated bone resorption. Polymorphisms in this gene have been associated with variations in bone mineral density and onset of osteoporosis. Alternate splicing results in multiple transcript variants. [provided by RefSeq, Sep 2009]

Product images:

Western blot validation of overexpression lysate (Cat# [LY431447]) using anti-DDK antibody (Cat# [TA50011-100]). Left: Cell lysates from untransfected HEK293T cells; Right: Cell lysates from HEK293T cells transfected with RC228419 using transfection reagent MegaTran 2.0 (Cat# [TT210002]).