

## Product datasheet for **RC228415**

### **TULP3 (NM\_001160408) Human Tagged ORF Clone**

#### **Product data:**

|                           |                                             |
|---------------------------|---------------------------------------------|
| Product Type:             | Expression Plasmids                         |
| Product Name:             | TULP3 (NM_001160408) Human Tagged ORF Clone |
| Tag:                      | Myc-DDK                                     |
| Symbol:                   | TULP3                                       |
| Synonyms:                 | TUBL3                                       |
| Mammalian Cell Selection: | Neomycin                                    |
| Vector:                   | pCMV6-Entry (PS100001)                      |
| E. coli Selection:        | Kanamycin (25 ug/mL)                        |



[View online »](#)

**ORF Nucleotide Sequence:**

>RC228415 representing NM\_001160408  
 Red=Cloning site Blue=ORF Green=Tags(s)

TTTTGTAATACGACTCACTATAGGGCGGCCGGAATTCGTCGACTGGATCCGGTACCGAGGAGATCTGCC  
 GCC**GCGATCGCC**

ATGGAGGCTTCGCGCTGCCGGCTCAGTCCCAGCGCGACAGTGTCTTCCATGAAGAAATGATGAAGATGC  
 GACAGGCTAAGCTGGATTATCAGAGGCTACTACTTGAGAAGAGGCCAAAGGAAAAAGCGCCTTGAGCCATT  
 TATGGTGCAGCCCAATCCAGAAGCCAGGCTACGTCGGGCAAAGCCAAGGGCCAGTGATGAGCAGACTCCC  
 TTGGTGAAGTGTACTACTCCCCACAGCAATGTCATCTTACATGGTATTGATGGTCCAGCTGCTGTCTGA  
 AACAGACGAAGTTCATGCTCCATCAGTAAGCTCCTCTGTTGGAAGAAGATGCTGAAAACACCGTGGAA  
 TACTGCTTCCAAGCCAGGACTTCAGGAGCGTCTCCAAAAGCATGATATCTCTGAAAGTGTGAAGTTCGAT  
 GAGGAGACTGATGGAATATCCAGTCAGCATGTTAGAAAAGCCCAATTCTGCATCAAGCCAGAATTCAA  
 CCGATACAGGCACTTCCGGTTCGCTACTGCCGCCAACCCAGCTGATAACCTCCTGGGAGACATAGACGA  
 CCTGGAGGACTTGTGTATAGTCTGCCCTCAAGGTGTCACAGTAAGATGTCGGATAATCCGGGATAAA  
 AGGGGAATGGATCGGGTCTCTTCCCACCTACTATATGTAAGTGGAAAAAGAAAAATCAGAAGATAT  
 TTCTTCTGACAGTAGAAAAGCGGAAAAAGCAAAAACAGCCAACCTACCTATCTCCATTGATCCAGTTGA  
 TTTATCTCGTGAAGGAGAAAAGTTATGTCGGCAAGCTTAGATCCAACCTCATGGGGACCAAGTTTACAGTT  
 TATGACCGTGGCATCTGCCCATGAAGGGCCGGGTTTGGTAGGAGCGGCCACACCCGGCAGGAGCTGG  
 CTGCCATCTCCTATGAAACAAACGTAAGTAAAGTCTAGGAAAATGTCTGTGATCATTCTCTGG  
 AATGACACTGAATCATAAGCAGATCCCCTATCAGCCACAAAACAACCATGACAGTTTGTCTCAAGGTGG  
 CAGAACAGAAGTATGAAAAATCTGGTTGAGCTGCACAACAAGGCCCGTCTGGAACAGTGACACTCAGT  
 CCTATGTCTCACTTCCGTGGCCGGTCACTCAGGCGTCTGTGAAGAAGTCCAGATATCCACAAAAA  
 TGACCCTGATTATATAGTCATGCAGTTTGGACGTGGCAGATGACGTGTTACACTGGATTACAACACTAC  
 CCACTTTGTGCAGTACAGGCCTTTGGCATCGGTCTTTCTAGCTTTGACAAATGTATCCAACCTTGAGAA  
 TGCAGGAGCTCTGTGAGCTCCACCGTCAGCACCATTAGCTGCATCCCTTGTGCACAGAAGTGTGGCC  
 GCGTTGGTGGGACACCCGTGGCGGCTGCTCCCTCAGACCTCCCTTCTGTGGACTGACCTCTCACCTCCG  
 CCTGTTGTTCTGCACCACATCAGATAAGCATG

**ACGCGT**ACGCGGCCGCTCGAGCAGAAACTCATCTCAGAAGAGGATCTGGCAGCAATGATATCTGGATT  
 ACAAGGATGACGACGATAAGGTTTAA

**Protein Sequence:**

>RC228415 representing NM\_001160408  
 Red=Cloning site Green=Tags(s)

MEASRCRLSPSGDSVFHEEMMKMRQAKLDYQRLLEKQRKRLEPFMVQPNPEARLRRRAKPRASDEQTP  
 LVNCHTPHSNVILHGIDGPAAVLKPDEVHAPSVSSVVEEDAENTVDTASKPGLQERLQKHDISESVNFD  
 EETDGISQSACLERPNSASSQNSTDTGTSGSATAAQPADNLLGDIDLEDFVYSPAPQGVTVRCRIIRDK  
 RGMDRGLFPTYMYLEKEENQKIFLLAARKRKKSKTANYLISIDPVDLSREGESYVGKLRNLMTGKFTV  
 YDRGICPMKGRGLVGAATRQELAAISYETNVLGFKGPRKMSVVIIPGMLNHNKQIPYQPQNNHDSLLSRW  
 QNRTMENLVELHNKAPVWNSDTQSYVLNFRGRVTQASVKNFQIVHKNDPDYIVMQFGRVADDVFTLDYNY  
 PLCAVQAFGIGLSSFDCIQTLRMQELCELHRQHSAASLVHRTVCQRWVGHPWRLLPQTSLLWTDLSPP  
 PVVPAPHQISM

**TRTRPLEQKLI**SEEDLAANDILDYKDDDDKV

**Chromatograms:**

[https://cdn.origene.com/chromatograms/mk8063\\_g07.zip](https://cdn.origene.com/chromatograms/mk8063_g07.zip)

**Restriction Sites:**

Sgfl-Mlul

**Cloning Scheme:**


**ACCN:** NM\_001160408

**ORF Size:** 1503 bp

**OTI Disclaimer:** The molecular sequence of this clone aligns with the gene accession number as a point of reference only. However, individual transcript sequences of the same gene can differ through naturally occurring variations (e.g. polymorphisms), each with its own valid existence. This clone is substantially in agreement with the reference, but a complete review of all prevailing variants is recommended prior to use. [More info](#)

**OTI Annotation:** This clone was engineered to express the complete ORF with an expression tag. Expression varies depending on the nature of the gene.

**Components:** The ORF clone is ion-exchange column purified and shipped in a 2D barcoded Matrix tube containing 10ug of transfection-ready, dried plasmid DNA (reconstitute with 100 ul of water).

- Reconstitution Method:**
1. Centrifuge at 5,000xg for 5min.
  2. Carefully open the tube and add 100ul of sterile water to dissolve the DNA.
  3. Close the tube and incubate for 10 minutes at room temperature.
  4. Briefly vortex the tube and then do a quick spin (less than 5000xg) to concentrate the liquid at the bottom.
  5. Store the suspended plasmid at -20°C. The DNA is stable for at least one year from date of shipping when stored at -20°C.

**RefSeq:** [NM\\_001160408.2](#)

**RefSeq ORF:** 1506 bp

**Locus ID:** 7289

**UniProt ID:** [O75386](#)

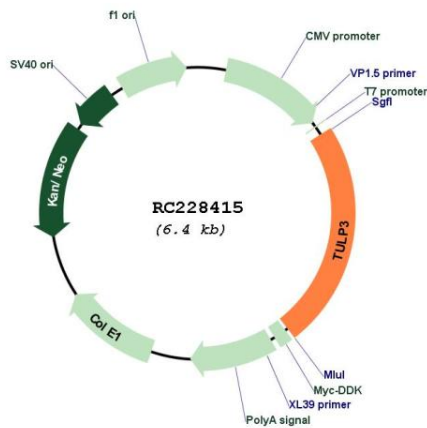
**Cytogenetics:** 12p13.33

**Protein Families:** Druggable Genome, Transcription Factors

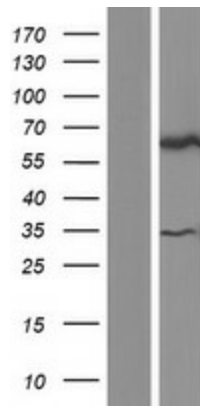
**MW:** 56.4 kDa

**Gene Summary:** This gene encodes a member of the tubby gene family of bipartite transcription factors. Members of this family have been identified in plants, vertebrates, and invertebrates, and they share a conserved N-terminal transcription activation region and a conserved C-terminal DNA and phosphatidylinositol-phosphate binding region. The encoded protein binds to phosphoinositides in the plasma membrane via its C-terminal region and probably functions as a membrane-bound transcription regulator that translocates to the nucleus in response to phosphoinositide hydrolysis, for instance, induced by G-protein-coupled-receptor signaling. It plays an important role in neuronal development and function. Two transcript variants encoding distinct isoforms have been identified for this gene. [provided by RefSeq, May 2009]

**Product images:**



Circular map for RC228415



Western blot validation of overexpression lysate (Cat# [LY431443]) using anti-DDK antibody (Cat# [TA50011-100]). Left: Cell lysates from untransfected HEK293T cells; Right: Cell lysates from HEK293T cells transfected with RC228415 using transfection reagent MegaTran 2.0 (Cat# [TT210002]).