

Product datasheet for **RC228408**

AGXT2L1 (ETNPPL) (NM_001146590) Human Tagged ORF Clone

Product data:

Product Type:	Expression Plasmids
Product Name:	AGXT2L1 (ETNPPL) (NM_001146590) Human Tagged ORF Clone
Tag:	Myc-DDK
Symbol:	AGXT2L1
Synonyms:	AGXT2L1
Mammalian Cell Selection:	Neomycin
Vector:	pCMV6-Entry (PS100001)
E. coli Selection:	Kanamycin (25 ug/mL)



[View online »](#)

ORF Nucleotide Sequence:

>RC228408 representing NM_001146590
 Red=Cloning site Blue=ORF Green=Tags(s)

TTTTGTAATACGACTCACTATAGGGCGGCCGGAATTCGTCGACTGGATCCGGTACCGAGGAGATCTGCC
 GCC**CGCATCGCC**

ATGTGCGAGCTGTACAGTAAGCGGGACACTCTGGGGCTGAGGAAGAAGCACATCGGGCCCTCATGCAAAG
 TTTTCTTTGCATCGGATCCCATCAAATAGTGAGAGCCAGAGGAGTACATGTTTGATGAGAACGGTGA
 ACAGTACTTGGACTGCATCAACAATGTTGCCCATGGAGTGGTCAAAGCTGCCCTGAAACAGATGGAAGT
 CTAATAACAAATCTCGATTCTCCACGACAACATTGTTGAGTATGCCAAACGCCTTTCAGCAACTCTGC
 CGGAGAAACTCTCTGTTTGTATTTTACAAATTCAGGATCCGAAGCCAACGACTTAGCCTTACGCCTGGC
 TCGGCAGTTCAGAGGCCACCAGGATGTGATCACTCTTGACCATGCTTACCATGGTACCTATCATCTTA
 ATTGAGATTAGCCATATAAGTTTCAGAAAGGAAAAGATGTCAAAAAGAATTTGTACATGTGCCACCAA
 CTCCAGATACTTACAGAGGAAAAATAGAGAAGACCATGCAGACTCAGCCAGTGTATGCAGATGAAGT
 GAAGAAAATCATTGAAGATGCTCATAACAGTGGAAAGGAAAGATTGTGCCTTTATTGCTGAATCCATGCAG
 AGTTGTGGCGGACAAATAATTCCTCCAGCAGGCTACTTCCAGAAAGTGGCAGAATATGTACACGGTGCAG
 GGGGTGTGTTTATAGCTGATGAAGTTCAAGTGGGCTTTGGCAGAGTTGGGAAACATTTCTGGAGCTTCCA
 GATGTATGGTGAAGACTTTGTTCCAGACATCGTCACAAATGGGAAAACCGATGGGCAACGGCCACCCGGTG
 GCATGTGTGGTAAACAACCAAGAAATTCGAGAAGCCTTACGACGCTCTGGGATGGAATATTTAATACGT
 ATGGAGGAAATCCAGTATCTTGTGCTGTTGGTTGGCTGTCTGGATATAAATGAAAATGAAGACCTTCA
 AGGAAATGCCAAGAGAGTAGGGAATTATCTCACTGAGTTACTGAAAAACAGAAGGCTAACACACTTTG
 ATAGGAGATATTAGGGCATTGGCCTTTTTATTGGAATTGATTTAGTGAAGGACCATCTGAAAAGGACCC
 CTGCCACAGCTGAAGCTCAGCACATCATCTACAAGATGAAAGAAAAACGAGTGTCTCTAGTCCGATGG
 ACCTCATAGAAAATGTACTTAAAAATAAACCCACTATGTGCTTCACTGAAGAAGATGCAAAGTTCATGGTG
 GACCAACTTGATAGGATTCTAACAGTTTTAGAAGAAGCTATGGGAACCAAAACCGAAAGTGTGACCTCTG
 AGAATACTCCATGCAAAAACAAAGATGCTGAAAGAAGCCACATAGAAGTCTTAGGGACAGCACCCTGA
 CTCCAAAGAAAATCCAGCAGAAAGAGAAATGGAATGTGCACGGATACACATTCAGTCTAGTAAGAGG
 CTAAGACA

ACGCGTACGCGGCCGCTCGAGCAGAAACTCATCTCAGAAGAGGATCTGGCAGCAAATGATATCCTGGATT
 ACAAGGATGACGACGATAAGGTTTAA

Protein Sequence:

>RC228408 representing NM_001146590
 Red=Cloning site Green=Tags(s)

MCELYSKRDTLGLRKKHIGPSCVFFASDPIKIVRAQRQYMFDENGEQYLDCINNVAHGVVKAALKQMEL
 LNTNSRFLHDNIVEYAKRLSATLPEKLSVCYFTNSGSEANDLALRLARQFRGHQDITLDHAYHGHLSL
 IEISPYKFQKGDVKKFVHVAPTPDTRGKYREDHADSASAYADEVKKIIEDAHNSGRKIAAFIAESMQ
 SCGGQIIPPAGYFQKVAEYVHGAGGVFIADEVQVGFGRVKGHFWSFQMYGEDFVDPDVTMGKPMGNHPV
 ACVVTTKEIAEAFSSSGMEYFNITYGNPVSCAVGLAVLDIIENEDLQGNAKRVGNLITELLKQKAKHTL
 IGDIRGIGLFIGIDLVDHLKRTPATAEAQHIIYKMKEKRVLLSADGPHRNVLKIKPPMCFTEEDAKFMV
 DQLDRILTVLEEAMGKTESVTSENTPCKTKMLKEAHIELLRDSTTDSKENPSRKRNGMCTDTHSLLSKR
 LKT

TRTRPLEQKLISEEDLAANDILDYKDDDDKV

Chromatograms:

https://cdn.origene.com/chromatograms/mk8063_c11.zip

Restriction Sites:

Sgfl-Mlul

Cloning Scheme:


ACCN: NM_001146590

ORF Size: 1479 bp

OTI Disclaimer: The molecular sequence of this clone aligns with the gene accession number as a point of reference only. However, individual transcript sequences of the same gene can differ through naturally occurring variations (e.g. polymorphisms), each with its own valid existence. This clone is substantially in agreement with the reference, but a complete review of all prevailing variants is recommended prior to use. [More info](#)

OTI Annotation: This clone was engineered to express the complete ORF with an expression tag. Expression varies depending on the nature of the gene.

Components: The ORF clone is ion-exchange column purified and shipped in a 2D barcoded Matrix tube containing 10ug of transfection-ready, dried plasmid DNA (reconstitute with 100 ul of water).

- Reconstitution Method:**
1. Centrifuge at 5,000xg for 5min.
 2. Carefully open the tube and add 100ul of sterile water to dissolve the DNA.
 3. Close the tube and incubate for 10 minutes at room temperature.
 4. Briefly vortex the tube and then do a quick spin (less than 5000xg) to concentrate the liquid at the bottom.
 5. Store the suspended plasmid at -20°C. The DNA is stable for at least one year from date of shipping when stored at -20°C.

RefSeq: [NM_001146590.2](#)

RefSeq ORF: 1482 bp

Locus ID: 64850

UniProt ID: [Q8TBG4](#)

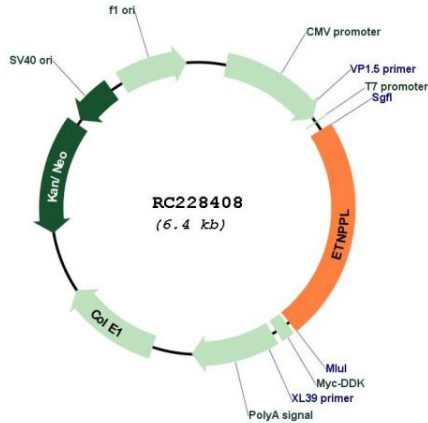
Cytogenetics: 4q25

Protein Families: Druggable Genome

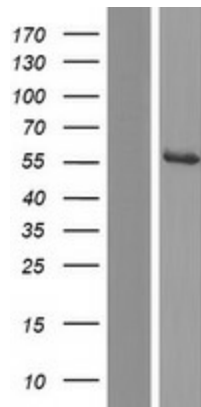
MW: 54.9 kDa

Gene Summary: Catalyzes the pyridoxal-phosphate-dependent breakdown of phosphoethanolamine, converting it to ammonia, inorganic phosphate and acetaldehyde.[UniProtKB/Swiss-Prot Function]

Product images:



Circular map for RC228408



Western blot validation of overexpression lysate (Cat# [LY431436]) using anti-DDK antibody (Cat# [TA50011-100]). Left: Cell lysates from untransfected HEK293T cells; Right: Cell lysates from HEK293T cells transfected with RC228408 using transfection reagent MegaTran 2.0 (Cat# [TT210002]).