

Product datasheet for **RC228403**

WDR21A (DCAF4) (NM_001163508) Human Tagged ORF Clone

Product data:

Product Type:	Expression Plasmids
Product Name:	WDR21A (DCAF4) (NM_001163508) Human Tagged ORF Clone
Tag:	Myc-DDK
Symbol:	WDR21A
Synonyms:	WDR21; WDR21A
Mammalian Cell Selection:	Neomycin
Vector:	pCMV6-Entry (PS100001)
E. coli Selection:	Kanamycin (25 ug/mL)



[View online »](#)

ORF Nucleotide Sequence:

>RC228403 representing NM_001163508
 Red=Cloning site Blue=ORF Green=Tags(s)

TTTTGTAATACGACTCACTATAGGGCGGCCGGAATTCGTGCGACTGGATCCGGTACCGAGGAGATCTGCC
 GCC**GCGATCGCC**

ATGAATAAAAGTCGCTGGCAGAGTAGAAGACGACATGGGAGAAGAAGCCACCAGCAGAACCCTTGGTTCA
 GACTCCGTGATTCTGAAGACAGGTCTGACTCCCGGGCAGCACAGCCCCTCACGATTCGGCCACGGTGA
 TGACGAGTCTCCGTCAACCTCGTCTGGCACAGCTGGGACCTCCTCTGTGCCAGAGCTACCTGGGTTTTAC
 TTTGACCTGAAAAGAAACGCTACTTCCGCTTGCTCCCTGGACATAACAACCTGCAACCCCTGACGAAAG
 AGAGCATCCGGCAGAAGGAGATGGAGAGCAAGAGACTGCGGTGCTCCAGGAAGAAGACAGACGGAAAA
 GATTGCCAGGATGGGATTTAATGCATCTCCATGCTACGAAAAAGCCAGCTGGGTTTTCTCAACGTACC
 AATTACTGCCATTTAGCCACGAGCTGCGTCTCAGCTGCATGGAGAGGAAAAAGTCCAGATTCGAAGCA
 TGGATCCCTCCGCTTGGCAAGCGACCGATTTAACCTCATACTGGCAGATACCAACAGTGACCGGCTCTT
 CACAGTGAACGATGTTAAAGTTGGAGGCTCCAAGTATGGTATCATCAACCTGCAAAGTCTGAAGACCCCT
 ACGCTCAAGGTGTTTCATGCACGAAAACCTACTTCCACCAACCGAAGGTGAATTCGGTGTGCTGGCCCT
 CGCTGAATCACTTGGATTCCACATTCTGCTATGCCTCATGGGACTCGCAGAGACTCCAGGCTGTGCCAC
 CCTGCTCCAGCATCACTGTTTCGTCATAGTACCCAGCAGGAATAGACCGGCTGGCATGCTCTGCAGT
 TTCCGGATCCCTGGTGCCTGGTCTGTGCCTGGTCCCTGAATAATCAAGCAAATAACTGTTTCAGTACAG
 GCTTGTCTCGGCGGTCTGTTGACCAACGTGGTACGGGACACCGGCAGTCTTTGGGACCAACAGTGA
 TGTCTTGGCTCCTCTGCTGTTAATGGCTGCCGCTCTGGGAAATCTTTGCCATTGATCTGCGTTGTGGA
 AATCAAGCAAGGATGGAAGGCCACCCGCTGTTTCATGATTACAGCAGTGACCTCTGTGCGGATCCTCC
 AAGTAGCAATACCTGATGGCTCAGACATGGCTGGAAGATCAAGCTGTGGACCTGAGGACCAACGAA
 GTGCGTAAGGCAGTACGAAGGCCACGTGAATGAGTACGCTACCTGCCCTGCATGTGCAGGAGGAAGAA
 GGAATCCTGGTGGCAGTGGGCCAGGACTGCTACACGAGAATCTGGAGCCTCCACGATGCCCGCTACTGA
 GAACCATACCCTCCCGTACCCTGCCTCCAAGGCCGACATTCACAGTGTGGCCTTCTCGTCGCGGCTGGG
 GGGCTCCCGGGCGCGCCGGGGCTGCTCATGGCTGTGGGCAGGACCTTTACTGTTACTCTACAGC

ACGCGTACGCGGCCGCTCGAGCAGAACTCATCTCAGAAGAGGATCTGGCAGCAAATGATATCCTGGATT
 ACAAGGATGACGACGATAAGGTTTAA

Protein Sequence:

>RC228403 representing NM_001163508
 Red=Cloning site Green=Tags(s)

MNKSRRWQSRRRHGRRSHQNPWFRLRDSERDSRAAQP AHDSGHGDDESPSTSSGTAGTSSVPELPGFY
 FDPEKKRYFRLLPGHNNCNPLTKE SIRQKEMESKRLRLLEEDRRKKIARMGFNASMLRKSQGLFNVT
 NYCHLAHELRLSCMERKKVQIRSM DPSALASDRFNLIADTNSDRLFTVNDVKVGGSKYGIINLQSLKTP
 TLKVMFHENLYFTNRKVNSVCWASLNHLDSHILLCLMGLAETPGATLLPASLFVNSHPAGIDRPGMLCS
 FRIPGAWSCAWSLNIQANNCFSTGLSRRVLLTNVVTGHRQSFGTNSDVLAPLLFNGCRSGEIFAIDLRCG
 NQKGWKATRLFHDSAVTSVRILQDEQYLMASDMAGKIKLWDLRTTKCVRQYEGHVNEYAYLPLHVHEEE
 GILVAVGQDCYTRIWSLHDARLLRTIPSPYPASKADIPSVAFSSRLGGSRGAPGLLMAVGQDLYCYSYS

TRTRPLEQKLI SEEDLAANDILDYKDDDDKV

Chromatograms:

https://cdn.origene.com/chromatograms/mk8063_a04.zip

Restriction Sites:

Sgfl-MluI

Cloning Scheme:


ACCN: NM_001163508

ORF Size: 1467 bp

OTI Disclaimer: The molecular sequence of this clone aligns with the gene accession number as a point of reference only. However, individual transcript sequences of the same gene can differ through naturally occurring variations (e.g. polymorphisms), each with its own valid existence. This clone is substantially in agreement with the reference, but a complete review of all prevailing variants is recommended prior to use. [More info](#)

OTI Annotation: This clone was engineered to express the complete ORF with an expression tag. Expression varies depending on the nature of the gene.

Components: The ORF clone is ion-exchange column purified and shipped in a 2D barcoded Matrix tube containing 10ug of transfection-ready, dried plasmid DNA (reconstitute with 100 ul of water).

- Reconstitution Method:**
1. Centrifuge at 5,000xg for 5min.
 2. Carefully open the tube and add 100ul of sterile water to dissolve the DNA.
 3. Close the tube and incubate for 10 minutes at room temperature.
 4. Briefly vortex the tube and then do a quick spin (less than 5000xg) to concentrate the liquid at the bottom.
 5. Store the suspended plasmid at -20°C. The DNA is stable for at least one year from date of shipping when stored at -20°C.

RefSeq: [NM_001163508.2](#)

RefSeq ORF: 1470 bp

Locus ID: 26094

UniProt ID: [Q8WW16](#)

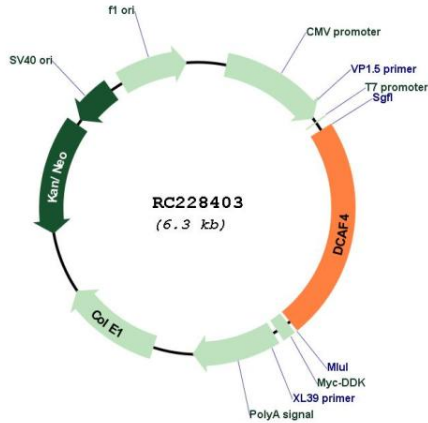
Cytogenetics: 14q24.2

MW: 54.8 kDa

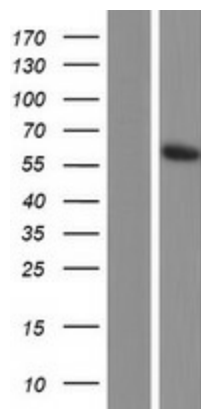
Gene Summary:

This gene encodes a WD repeat-containing protein that interacts with the Cul4-Ddb1 E3 ligase macromolecular complex. Multiple alternatively spliced transcript variants have been found for this gene. [provided by RefSeq, Jul 2009]

Product images:



Circular map for RC228403



Western blot validation of overexpression lysate (Cat# [LY431431]) using anti-DDK antibody (Cat# [TA50011-100]). Left: Cell lysates from untransfected HEK293T cells; Right: Cell lysates from HEK293T cells transfected with RC228403 using transfection reagent MegaTran 2.0 (Cat# [TT210002]).