

Product datasheet for **RC228392**

WDR21A (DCAF4) (NM_001163509) Human Tagged ORF Clone

Product data:

Product Type:	Expression Plasmids
Product Name:	WDR21A (DCAF4) (NM_001163509) Human Tagged ORF Clone
Tag:	Myc-DDK
Symbol:	WDR21A
Synonyms:	WDR21; WDR21A
Mammalian Cell Selection:	Neomycin
Vector:	pCMV6-Entry (PS100001)
E. coli Selection:	Kanamycin (25 ug/mL)



[View online »](#)

ORF Nucleotide Sequence:

>RC228392 representing NM_001163509
 Red=Cloning site Blue=ORF Green=Tags(s)

TTTTGTAATACGACTCACTATAGGGCGGCCGGAATTCGTCGACTGGATCCGGTACCGAGGAGATCTGCC
 GCC**CGGATCGCC**

ATGGGAGAAGAAGCCACCAGCAGAACCCTTGGTTCAGACTCCGTGATTCTGAAGACAGTCTGACTCCCG
 GGCAGCACAGCCCGCTCACGATTCGGCCACGGTGATGACGAGTCTCCGTC AACCTCGTCTGGCACAGCT
 GGGACCTCCTCTGTGCCAGAAACGCTACTTCCGCTTGCTCCCTGGACATAACAACCTGCAACCCCTGACG
 AAAGAGAGCATCCGGCAGAAGGAGATGGAGAGCAAGAGACTGCGGCTGCTCCAGGAAGAAGACAGACGGA
 AAAAGATTGCCAGGATGGGATTTAATGCATCTTCCATGCTACGAAAAAGCCAGCTGGGTTTTCTCAACGT
 CACCAATTACTGCCATTTAGCCACGAGCTGCGTCTCAGCTGCATGGAGAGGAAAAAGTCCAGATTCTGA
 AGCATGGATCCCTCCGCCTTGGCAAGCGACCGATTTAACCTCATACTGGCAGATACCAACAGTGACCGGC
 TCTTCACAGTGAACGATGTTAAAGTTGGAGGCTCCAAGTATGGTATCATCAACCTGCAAAGTCTGAAGAC
 CCCTACGCTCAAGGTGTTTCATGCACGAAAACCTCTACTTCACCAACCGGAAGGTGAATTCGGTGTGCTGG
 GCCTCGCTGAATCACTTGGATTCCACATTTCTGCTATGCCTCATGGGACTCGCAGAGACTCCAGGCTGTG
 CCACCCTGCTCCACGATCACTGTTTCGTC AATAGTCACCCAGCAGGAATAGACCGGCCTGGCATGCTCTG
 CAGTTTCCGGATCCCTGGTGCCTGGTCCCTGATGCTGCTGTTTAAATGGCTGCCGCTCTGGGAAAT
 ACAGGCTTGTCTCGGCGGTCTCTGTGACCAACGTGGTGACGGGACACCGGCAGTCCCTTTGGGACCAACA
 GTGATGTCTTGGCCAGCAGTTTGTCTCATGGCTCCTCTGCTGTTTAAATGGCTGCCGCTCTGGGAAAT
 CTTTGCCATTGATCTGCGTTGTGAAATCAAGGCAAGGGATGGAAGGCCACCGCCTGTTTCATGATTCA
 GCAGTGACCTCTGTGCGGATCCTCAAGATGAGCAATACCTGATGGCTTACAGACATGGCTGGAAGATCA
 AGCTGTGGGACCTGAGGACCACGAAGTGGTAAGGCAGTACGAAGGCCACGTGAATGAGTACGCCTACCT
 GCCCCTGCATGTGCACGAGGAAGAAGGAATCCTGGTGGCAGTGGGCCAGGACTGCTACACGAGAATCTGG
 AGCCTCCACGATGCCCGCTACTGAGAACCATAACCTCCCGTACCCTGCCTCCAAGGCCGACATCCCA
 GTGTGGCCTTCTCGTCGCGGCTGGGGGGCTCCCGGGCGCGCCGGGGCTGCTCATGGCTGTGGGCAGGA
 CCTTTACTGTTACTCTACAGC

ACGCGTACGCGGCCGCTCGAGCAGAAACTCATCTCAGAAGAGGATCTGGCAGCAAATGATATCTGGATT
 ACAAGGATGACGACGATAAGGTTTAA

Protein Sequence:

>RC228392 representing NM_001163509
 Red=Cloning site Green=Tags(s)

MGEEATSRTLGSDSVILKTGLTPGQHSPLTIPATVMTSLRQPRLAQLGPPLCQKRYFRLLPGHNNCPLT
 KESIRQKEMESKRLRLLQEEDRRKKIARMGFNASSMLRKSQLGFLNVTNYCHLAHELRLSCMERKKVQIR
 SMDPSALASDRFNLILADTNSDRLFTVNDVKVGGSKYGIINLQSLKPTLKVFMHENLYFTNRKVNVCW
 ASLNHLDSHILLCLMGLAETPGCATLLPASL FVN SHPAGIDRPGMLCSFRIPGAWSCAWSLNIQANNCFS
 TGLSRRVLLTNVVTGHRQSFGTNSDVLAAQFALMAPLLFNGCRSGEIFAIDLRCGNQKGWKATRLFHDS
 AVTSVRILQDEQYLMASDMAGKIKLWDLRRTTKCVRQYEGHVNEYAYLPLHVHEEEGILVAVGQDCYTRII
 SLHDARLLRTIPSPYPASKADIPSVAFSSRLGGSRGAPGLLMAVGQDLYCYSYS

TRTRPLEQKLI SEEDLAANDILDYKDDDDKV

Chromatograms:

https://cdn.origene.com/chromatograms/mk8062_c09.zip

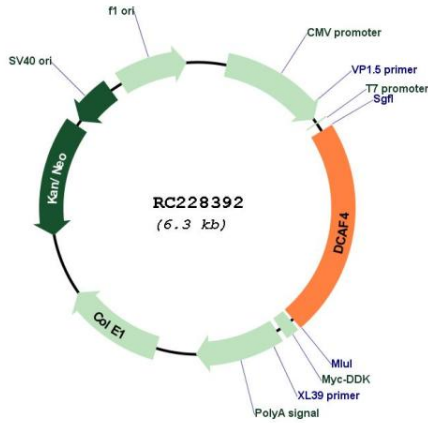
Restriction Sites:

Sgfl-Mlul

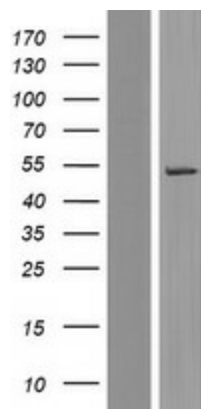
Gene Summary:

This gene encodes a WD repeat-containing protein that interacts with the Cul4-Ddb1 E3 ligase macromolecular complex. Multiple alternatively spliced transcript variants have been found for this gene. [provided by RefSeq, Jul 2009]

Product images:



Circular map for RC228392



Western blot validation of overexpression lysate (Cat# [LY431420]) using anti-DDK antibody (Cat# [TA50011-100]). Left: Cell lysates from untransfected HEK293T cells; Right: Cell lysates from HEK293T cells transfected with RC228392 using transfection reagent MegaTran 2.0 (Cat# [TT210002]).