

## Product datasheet for **RC228390**

### CD39 (ENTPD1) (NM\_001164179) Human Tagged ORF Clone

#### Product data:

Product Type:	Expression Plasmids
Product Name:	CD39 (ENTPD1) (NM_001164179) Human Tagged ORF Clone
Tag:	Myc-DDK
Symbol:	CD39
Synonyms:	ATPDase; CD39; NTPDase-1; SPG64
Mammalian Cell Selection:	Neomycin
Vector:	pCMV6-Entry (PS100001)
E. coli Selection:	Kanamycin (25 ug/mL)



[View online »](#)

**ORF Nucleotide Sequence:**

>RC228390 representing NM\_001164179  
 Red=Cloning site Blue=ORF Green=Tags(s)

TTTTGTAATACGACTCACTATAGGGCGGCCGGAATTCGTCGACTGGATCCGGTACCGAGGAGATCTGCC  
 GCC**CGGATCGCC**

ATGGAAGATACAAAGGAGTCTAACGTGAAGACATTTTCTCCAAGAATATCCTAGCCATCCTTGCTTCT  
 CCTCTATCATAGCTGTGATAGCTTTGCTTGTGGGTTGACCCAGAACAAGCATTGCCAGAAAACGT  
 TAAGTATGGGATTGTGCTGGATGCGGGTCTTCTCACACAAGTTTATACATCTATAAGTGGCCAGCAGAA  
 AAGGAGAATGACACAGGCGTGGTGCATCAAGTAGAAGAATGCAGGGTTAAAGGTCCTGGAATCTCAAAAT  
 TTGTTCCAGAAAGTAAATGAAATAGGCATTTACCTGACTGATTGCATGAAAAGAGCTAGGGAAGTATTCC  
 AAGGTCCAGCACCAAGAGACACCCGTTTACCTGGGAGCCACGGCAGGCATGCGTTTCTCAGGATGGAA  
 AGTGAAGAGTTGGCAGACAGGGTCTGGATGTGGTGGAGAGGAGCCTCAGCAACTACCCCTTTGACTTCC  
 AGGGTCCAGGATCATTACTGGCCAAGAGGAAGGTGCCTATGGCTGGATTACTATCAACTATCTGCTGGG  
 CAAATTCAGTCAGAAAACAAGGTGGTTCAGCATAGTCCCATATGAAACCAATAATCAGGAAACCTTTGGA  
 GCTTTGGACCTTGGGGGAGCCTCTACACAAGTCACTTTTGTACCCAAAACCAGACTATCGAGTCCCCAG  
 ATAATGCTCTGCAATTCGCCTCTATGGCAAGGACTACAATGTCTACACACATAGCTTCTTGCTATGG  
 GAAGGATCAGGCACTCTGGCAGAAAAGTGGCAAGGACATTCAGCAGTTTAAAATCCAGGGTATTGAAAAC  
 TATCAACAATGCCATCAAAGCATCTCGGAGCTCTCAACACCAGTTACTGCCCTTACTCCAGTGTGCCCT  
 TCAATGGGATTTCTTCCCACTCCAGGGGATTTGGGGCATTTCAGCTTTTACTTTGTGATGAA  
 GTTTTTAACTTGACATCAGAGAAAGTCTCTCAGGAAAAGGTGACTGAGATGATGAAAAGTTCTGTGCT  
 CAGCCTTGGGAGGAGATAAAAACATCTTACGCTGGAGTAAAGGAGAAGTACCTGAGTGAATACTGCTTTT  
 CTGGTACCTACATCTCCTCCTCTGCAAGGCTATCATTTCACAGCTGATTCTGGGAGCACATCCA  
 TTTTATTGGCAAGATCCAGGGCAGCAGCCGGCTGGACTTTGGGCTACATGCTGAACCTGACCAACATG  
 ATCCCAGCTGAGCAACCATTGTCCACACCTCTCTCCCACTCCACCTATGTCTTCTCATGTTCTATTCT  
 CCCTGGTCTTTTACAGTGGCCATCATAGGCTTGCTTATCTTTACAAGCCTTCATATTCTGGAAGA  
 TATGGTA

**ACGGCT**ACGCGGCCGCTCGAGCAGAAAACATCTCAGAAGAGGATCTGGCAGCAATGATATCCTGGATT  
 ACAAGGATGACGACGATAAGGTTTAA

**Protein Sequence:**

>RC228390 representing NM\_001164179  
 Red=Cloning site Green=Tags(s)

MEDTKESNVKTFCSKNILAILGFSSIIAVIALAVGLTQNKALPENVKYIVLDAGSSHTSLYIYKWPAE  
 KENDTGVVHQVEECRVKGPISKFVQKVNEIGIYLTDCMERAREVIPRSQHQETPVYLGATAGMRLLRME  
 SEELADRVLDVVERSLSNYPDFQGARIITGQEEGAYGWIITINYLLGKFSQKTRWF SIVPYETNNQETFG  
 ALDLGGASTQVTFVPQNQTIESPDNALQFRLYGKDYNYVYTHSFLCYGKDQALWQKLAKDIQQFEIQGIGN  
 YQQCHQSILELFNTSYCPYSQCAFNGIFLPPPLQGDFGAFSAFYFVMKFLNLTSEKVSQEKVTEMMKKFCA  
 QPWEEIKTSYAGVKEKYLSEYCFSGTYILSLLLQGYHFTADSWEHIHF IGKIQGS DAGWTLGYMLNLTNM  
 IPEAQPLSTPLSHSTYVFLMVLVFLVFTVAIIIGLLIFHKPSYFWKDMV

**TR**TRPLEQKLI SEEDLAANDILDYKDDDDKV

**Chromatograms:**

[https://cdn.origene.com/chromatograms/mk8062\\_a12.zip](https://cdn.origene.com/chromatograms/mk8062_a12.zip)

**Restriction Sites:**

Sgfl-Mlul

**Cloning Scheme:**


**ACCN:** NM\_001164179

**ORF Size:** 1407 bp

**OTI Disclaimer:** Due to the inherent nature of this plasmid, standard methods to replicate additional amounts of DNA in E. coli are highly likely to result in mutations and/or rearrangements. Therefore, OriGene does not guarantee the capability to replicate this plasmid DNA. Additional amounts of DNA can be purchased from OriGene with batch-specific, full-sequence verification at a reduced cost. Please contact our customer care team at [custsupport@origene.com](mailto:custsupport@origene.com) or by calling 301.340.3188 option 3 for pricing and delivery.

The molecular sequence of this clone aligns with the gene accession number as a point of reference only. However, individual transcript sequences of the same gene can differ through naturally occurring variations (e.g. polymorphisms), each with its own valid existence. This clone is substantially in agreement with the reference, but a complete review of all prevailing variants is recommended prior to use. [More info](#)

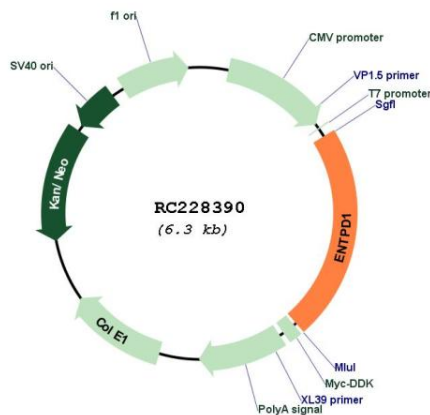
**OTI Annotation:** This clone was engineered to express the complete ORF with an expression tag. Expression varies depending on the nature of the gene.

**Components:** The ORF clone is ion-exchange column purified and shipped in a 2D barcoded Matrix tube containing 10ug of transfection-ready, dried plasmid DNA (reconstitute with 100 ul of water).

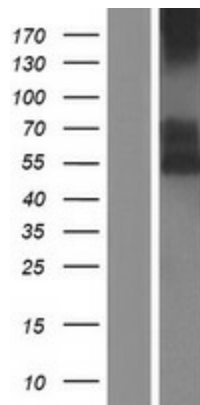
- Reconstitution Method:**
1. Centrifuge at 5,000xg for 5min.
  2. Carefully open the tube and add 100ul of sterile water to dissolve the DNA.
  3. Close the tube and incubate for 10 minutes at room temperature.
  4. Briefly vortex the tube and then do a quick spin (less than 5000xg) to concentrate the liquid at the bottom.
  5. Store the suspended plasmid at -20°C. The DNA is stable for at least one year from date of shipping when stored at -20°C.

RefSeq:	<u>NM_001164179.2</u>
RefSeq ORF:	1410 bp
Locus ID:	953
Cytogenetics:	10q24.1
Protein Families:	Transmembrane
Protein Pathways:	Purine metabolism, Pyrimidine metabolism
MW:	53 kDa
Gene Summary:	The protein encoded by this gene is a plasma membrane protein that hydrolyzes extracellular ATP and ADP to AMP. Inhibition of this protein's activity may confer anticancer benefits. Several transcript variants encoding different isoforms have been found for this gene. [provided by RefSeq, Aug 2015]

### Product images:



Circular map for RC228390



Western blot validation of overexpression lysate (Cat# [LY431418]) using anti-DDK antibody (Cat# [TA50011-100]). Left: Cell lysates from untransfected HEK293T cells; Right: Cell lysates from HEK293T cells transfected with RC228390 using transfection reagent MegaTran 2.0 (Cat# [TT210002]).