

## Product datasheet for **RC228389**

### **KRT72 (NM\_001146226) Human Tagged ORF Clone**

#### **Product data:**

Product Type:	Expression Plasmids
Product Name:	KRT72 (NM_001146226) Human Tagged ORF Clone
Tag:	Myc-DDK
Symbol:	KRT72
Synonyms:	CK-72; K6irs; K6IRS2; K72; KRT6; KRT6IRS2
Mammalian Cell Selection:	Neomycin
Vector:	pCMV6-Entry (PS100001)
E. coli Selection:	Kanamycin (25 ug/mL)



[View online »](#)

**ORF Nucleotide Sequence:**

>RC228389 representing NM\_001146226  
 Red=Cloning site Blue=ORF Green=Tags(s)

TTTTGTAATACGACTCACTATAGGGCGGCCGGAATTCGTCGACTGGATCCGGTACCGAGGAGATCTGCC  
 GCC**GCGATCGCC**

ATGAGCCGCCAACTGACCCATTTCCCCCGGGGAGCGCCTGGGTTTTCAGCGGTTGCTCCGCGGTCTCT  
 CTGGCGGGATCGGCAGCAGCTCCGCCTCATTCCGGGCCCGGGTCAAGGGCTCGGCCTCCTTTGGCAGCAA  
 GAGCCTCTCCTGCCTTGGGGCAGCCGAAGCCTGGCGCTCAGCGCTGCTGCACGGCGGGCGGGCGCCG  
 CTGGGCGGCTTCTGGGGACCGCCTTCGGCAGCGCCGGGCTGGGGCCAAAGTGTCCCTCCGTGTGCCAC  
 CCGGGGATCCCTCAGGTCAACGCAACAAGAGCCTCCTGGCCCGCTCAACGTGGAGATGGACCCGA  
 GATCCAGAGGGTGCAGCGCCAGGAGCGGGAGCAGATCAAGGCGCTAAACAACAAGTTGCGCTCCTTCATC  
 GACAAGGTGCGGTTCTGGAGCAGCAGAATCAGGTGCTAGAGACCAAGTGAACCTCTACAGCAGCTGG  
 ACTTGAACAACCTGCAGGAAGAACCTGGAGCCATTTATGAGGGCTACATCAGCAACCTGCAGAAGCAGCT  
 GGAGATGCTGTCTGGGGACGGGTTGAGGCTGGATTCGGAGCTGAGGAACATGCAGGATTTGGTGGAGGAC  
 TACAAGAAGAGGTATGAGGTGGAGATTAACAGACGCACAGCTGCTGAGAAATGAGTTTGTGGTGTCAAGA  
 AGGACGTGGATGCTGCTTACATGAATAAGTTGAGCTCCAGGCCAAGGTGGACTCCTTGACAGATGAGAT  
 TAAATCTTCAAGTGCCTTTATGAAGGGGAGATCACTCAGATCCAGTCCCACATCAGCGACACGTCCATC  
 GTCCTGTCAATGGACAACAACCGGGATCTGGACCTGGACAGCATCATTGCCGAGGTCCGTGCCAGTACG  
 AGGAGATTGCCCTAAAGAGCAAGGCCGAGGCTGAGACCTGTACCAGACCAAGTGTGCCGATCTGGAGAC  
 GGCCATCGCCGACGCTGAACAGCGGGGGACTGCGCCCTGAAAGATGCCCGGCCAAGCTGGATGAGCTG  
 GAGGGCGCCCTGCACCAGGCCAAGGAGGAGCTGGCAGGATGCTGCGTGAAGTACCAGGAGCTCGTGAAGC  
 TGAAGCTGGCCCTGGATATGGAGATCGCCACCTACCGCAAGCTGCTGGAGAGCGAGGAGTGCAGGATGTC  
 TGGCGAATATCCAAATCTGTGAGCATCTCCGTACATCAGCAGCACAATGCTGGGGCAGGAGGGGCTGGC  
 TTCAGCATGGGCTTTGGCGCCTCAAGCAGTTATAGCTACAAAACCTGCAGCTGCAGACGCTCAAGACAAAAG  
 GCAGCTGTGGCAGTGAAGTCAAGGATCCCTTGCCAAAACCTCGGGGAGCAGCTGTGCCACAAAAGGC  
 CTCCAGA

**ACGCGT**ACGCGGCCGCTCGAGCAGAACTCATCTCAGAAGAGGATCTGGCAGCAAATGATATCTGGATT  
 ACAAGGATGACGACGATAAGGTTTAA

**Protein Sequence:**

>RC228389 representing NM\_001146226  
 Red=Cloning site Green=Tags(s)

MSRQLTHFPRGERLGFSGCSAVLSGGIGSSSASFRARVKGSASFSGSKLSCLGGSRLALSAAARRGGGR  
 LGGFVGTAFGSAGLGPCKPSVCPGGIPQVTVNKSLAPLNVEMDPEIQRVRAQEREQIKALNNKFASFI  
 DKVRFLEQQNQVLETKWNLLQQLDLNCRKNLEPIYEGYISNLQKQLEMLSGDGVRLDSELNMQDLVED  
 YKKRYEVEINRRTAAENEFVVLKKDVEDAAYMNKVELQAKVDSLDEIKFFKCLYEGETIQISHISDTSI  
 VLSMDNRRDLDLDSIIAEVRAQYEEIALKSKAEETLYQTKCADLETAIADAEQRGDCALKDARAKLDEL  
 EGALHQAKEELARMLREYQELVSLKALDMEIATYRKLLESEECRMSGEYPNSVSI SVISSTNAGAGGAG  
 FSMGFGASSYSYKTAADVKTGSCGSELKDPLAKTSGSSCATKKASR

**TR**TRPLEQKLI SEEDLAANDILDYKDDDDKV

**Chromatograms:**

[https://cdn.origene.com/chromatograms/mk8062\\_a11.zip](https://cdn.origene.com/chromatograms/mk8062_a11.zip)

**Restriction Sites:**

Sgfl-Mlul

**Cloning Scheme:**


**ACCN:** NM\_001146226

**ORF Size:** 1407 bp

**OTI Disclaimer:** The molecular sequence of this clone aligns with the gene accession number as a point of reference only. However, individual transcript sequences of the same gene can differ through naturally occurring variations (e.g. polymorphisms), each with its own valid existence. This clone is substantially in agreement with the reference, but a complete review of all prevailing variants is recommended prior to use. [More info](#)

**OTI Annotation:** This clone was engineered to express the complete ORF with an expression tag. Expression varies depending on the nature of the gene.

**Components:** The ORF clone is ion-exchange column purified and shipped in a 2D barcoded Matrix tube containing 10ug of transfection-ready, dried plasmid DNA (reconstitute with 100 ul of water).

- Reconstitution Method:**
1. Centrifuge at 5,000xg for 5min.
  2. Carefully open the tube and add 100ul of sterile water to dissolve the DNA.
  3. Close the tube and incubate for 10 minutes at room temperature.
  4. Briefly vortex the tube and then do a quick spin (less than 5000xg) to concentrate the liquid at the bottom.
  5. Store the suspended plasmid at -20°C. The DNA is stable for at least one year from date of shipping when stored at -20°C.

**RefSeq:** [NM\\_001146226.2](#)

**RefSeq ORF:** 1410 bp

**Locus ID:** 140807

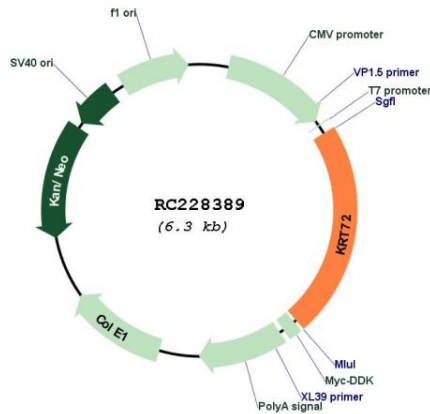
**UniProt ID:** [Q14CN4](#)

**Cytogenetics:** 12q13.13

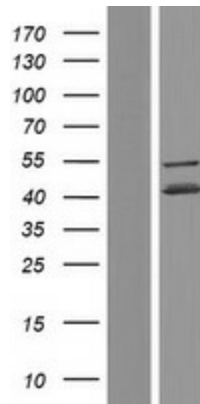
**MW:** 50.9 kDa

**Gene Summary:**

Keratins are intermediate filament proteins responsible for the structural integrity of epithelial cells. The type II keratins consist of basic or neutral proteins which are arranged in pairs of heterotypic keratin chains coexpressed during differentiation of simple and stratified epithelial tissues. This gene encodes a type II keratin that is specifically expressed in the inner root sheath of hair follicles. The type II keratins are clustered in a region of chromosome 12q12-q13. Multiple transcript variants encoding different isoforms have been found for this gene.[provided by RefSeq, Jun 2009]

**Product images:**


Circular map for RC228389



Western blot validation of overexpression lysate (Cat# [LY431417]) using anti-DDK antibody (Cat# [TA50011-100]). Left: Cell lysates from untransfected HEK293T cells; Right: Cell lysates from HEK293T cells transfected with RC228389 using transfection reagent MegaTran 2.0 (Cat# [TT210002]).