

Product datasheet for **RC228371**

TCP1 eta (CCT7) (NM_001166284) Human Tagged ORF Clone

Product data:

Product Type:	Expression Plasmids
Product Name:	TCP1 eta (CCT7) (NM_001166284) Human Tagged ORF Clone
Tag:	Myc-DDK
Symbol:	TCP1 eta
Synonyms:	CCTETA; CCTH; NIP7-1; TCP1ETA
Mammalian Cell Selection:	Neomycin
Vector:	pCMV6-Entry (PS100001)
E. coli Selection:	Kanamycin (25 ug/mL)



[View online »](#)

ORF Nucleotide Sequence:

>RC228371 representing NM_001166284
 Red=Cloning site Blue=ORF Green=Tags(s)

TTTTGTAATACGACTCACTATAGGGCGGCCGGAATTCGTCGACTGGATCCGGTACCGAGGAGATCTGCC
 GCC**CGCATCGCC**

ATGATGGTGGGTGATGGCACCACCTCAGTGACCTTGCTGGCTGCAGATTTCTGAAGCAGGTGAAACCTT
 ATGTGGAGGAAGTTTACACCCAGATCATCATTTCGAGCTTCCGCACAGCCACCAGCTGGCAGTTAA
 CAAGATCAAAGAGATTGCTGTGACCGTGAAGAAGGCAGATAAAGTGGAGCAGAGGAAGCTGCTGAAAAAG
 TGTGCCATGACCGCTCTGAGCTCCAAGCTGATCTCCAGCAGAAAAGCTTTCTTTGCTAAGATGGTGGTGG
 ATGCAGTGATGATGCTCGATGATTTGCTGCAGCTTAAAAATGATTGGAATCAAGAAGGTACAGGGTGGAGC
 CCTCGAGGATTCTCAGCTGGTAGCTGGTGTGCATTCAAGAAGACTTTCTTTACGCTGGGTTTGAATG
 CAACCCAAAAAGTACCACAATCCAAGATTGCCCTTTTGAATGTCGAGCTCGAGTTGAAAGCTGAGAAAAG
 ACAATGCTGAGATAAGAGTCCACACAGTTGAGGATTATCAGGCAATTGTTGATGCTGAGTGAACATTCT
 CTATGACAAGTTAGAGAAGATCCATCATTCTGGAGCCAAAGTTGCTTTGCTCCAACTCCCATTGGGGAT
 GTGGCCACCCAGTACTTTGCTGACAGGGACATGTTCTGTGCTGGCCGAGTACCTGAGGAGGATCTGAAGA
 GGACAATGATGGCCTGTGGAGGCTCAATCCAGACCAGTGTGAATGCTCTGTGACGAGATGTGCTGGTCCG
 ATGCCAGTGTTTGAAGAGACCCAGATTGGAGGCGAGAGGTACAATTTTTTACTGGCTGCCCAAGGCC
 AAGACATGCACCTTATTCTCCGTGGCGGCCGAGCAGTTTATGGAGGAGACAGAGCGTCCCTGCATG
 ATGCCATCATGATCGTCAGGAGGGCCATCAAGAATGATTCAGTGGTGGCTGGTGGCGGGGCCATTGAGAT
 GGAAGTCTCAAGTACCTGCGGGATTACTCAAGGACTATCCAGGAAAACAGCAGCTGTTGATTGGGGCA
 TATGCCAAGGCCCTGGAGATTATCCACGCCAGCTGTGTGACAATGCTGGCTTTGATGCCACAAACATTC
 TCAACAAGCTGCGGGCTCGGCATGCCAGGGGGTACATGGTATGGAGTAGACATCAACAACGAGGACAT
 TGCTGACAACTTTGAAGCTTTCGTGTGGGAGCCAGCTATGGTGGGATCAATGCGCTGACAGCAGCCTCT
 GAGGCTGCGTGCCTGATCGTGTCTGTAGATGAAACCATCAAGAACCCCGCTCGACTGTGGATGCTCCCA
 CAGCAGCAGGCCGGGGCCGTGGTGGTGGCCGCCCCAC

ACGCGTACGCGGCCGCTCGAGCAGAACTCATCTCAGAAGAGGATCTGGCAGCAAATGATATCCTGGATT
 ACAAGGATGACGACGATAAGGTTTAA

Protein Sequence:

>RC228371 representing NM_001166284
 Red=Cloning site Green=Tags(s)

MMVGDGTTSVTLAAEFLKQVKPYVEEGLHPQIIIRAFRTATQLAVNKIKEIAVTVKKADKVEQRKLEK
 CAMTALSSKLISQKKAFFAKMVVDVMMDDLLQLKMIGIKKVQGGALDSQLVAGVAFKKTFSYAGFEM
 QPKKYHNPKIALLNVELELKAEKDNAEIRVHTVEDYQAIVDAEWNILYDKLEKIHHSAGAKVVL SKLP IGD
 VATQYFADRFMFCAGRVPEEDLKRMMACGGSIQTSVNL SADVLGRCQVFEETQIGGERYNFFTGCPKA
 KTCTF ILRGGAEQFMEETERSLHDAIMIVRRAIKNDSVAVGGGAIEMELSKYL R DYSRTIPGKQQLLIGA
 YAKALEIIPRQLCDNAGFDATNINLKL RARHAQGGT WYGV D INNEDIADNFEAFVWEPAMVRINALTAAS
 EAACLIVSVDETIKNPRSTVDAPTAAGRGRGRGRPH

TRTRPLEQKLISEEDLAANDILDYKDDDDKV

Chromatograms:

https://cdn.origene.com/chromatograms/mk8039_a10.zip

Restriction Sites:

Sgfl-Mlul

Cloning Scheme:


ACCN: NM_001166284

ORF Size: 1368 bp

OTI Disclaimer: The molecular sequence of this clone aligns with the gene accession number as a point of reference only. However, individual transcript sequences of the same gene can differ through naturally occurring variations (e.g. polymorphisms), each with its own valid existence. This clone is substantially in agreement with the reference, but a complete review of all prevailing variants is recommended prior to use. [More info](#)

OTI Annotation: This clone was engineered to express the complete ORF with an expression tag. Expression varies depending on the nature of the gene.

Components: The ORF clone is ion-exchange column purified and shipped in a 2D barcoded Matrix tube containing 10ug of transfection-ready, dried plasmid DNA (reconstitute with 100 ul of water).

- Reconstitution Method:**
1. Centrifuge at 5,000xg for 5min.
 2. Carefully open the tube and add 100ul of sterile water to dissolve the DNA.
 3. Close the tube and incubate for 10 minutes at room temperature.
 4. Briefly vortex the tube and then do a quick spin (less than 5000xg) to concentrate the liquid at the bottom.
 5. Store the suspended plasmid at -20°C. The DNA is stable for at least one year from date of shipping when stored at -20°C.

RefSeq: [NM_001166284.1](#), [NP_001159756.1](#)

RefSeq ORF: 1371 bp

Locus ID: 10574

UniProt ID: [Q99832](#)

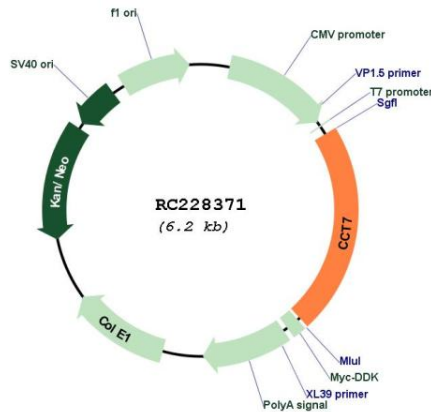
Cytogenetics: 2p13.2

MW: 50.2 kDa

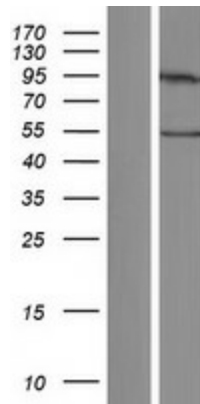
Gene Summary:

This gene encodes a molecular chaperone that is a member of the chaperonin containing TCP1 complex (CCT), also known as the TCP1 ring complex (TRiC). This complex consists of two identical stacked rings, each containing eight different proteins. Unfolded polypeptides enter the central cavity of the complex and are folded in an ATP-dependent manner. The complex folds various proteins, including actin and tubulin. Alternative splicing results in multiple transcript variants. Related pseudogenes have been identified on chromosomes 5 and 6. [provided by RefSeq, Oct 2009]

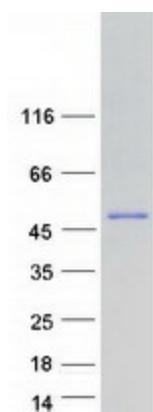
Product images:



Circular map for RC228371



Western blot validation of overexpression lysate (Cat# [LY431399]) using anti-DDK antibody (Cat# [TA50011-100]). Left: Cell lysates from untransfected HEK293T cells; Right: Cell lysates from HEK293T cells transfected with RC228371 using transfection reagent MegaTran 2.0 (Cat# [TT210002]).



Coomassie blue staining of purified CCT7 protein (Cat# [TP328371]). The protein was produced from HEK293T cells transfected with CCT7 cDNA clone (Cat# RC228371) using MegaTran 2.0 (Cat# [TT210002]).