

Product datasheet for **RC228359**

GRAMD2B (NM_001146319) Human Tagged ORF Clone

Product data:

Product Type:	Expression Plasmids
Product Name:	GRAMD2B (NM_001146319) Human Tagged ORF Clone
Tag:	Myc-DDK
Symbol:	GRAMD2B
Synonyms:	GRAMD3; NS3TP2
Mammalian Cell Selection:	Neomycin
Vector:	pCMV6-Entry (PS100001)
E. coli Selection:	Kanamycin (25 ug/mL)



[View online »](#)

ORF Nucleotide Sequence:

>RC228359 representing NM_001146319
 Red=Cloning site Blue=ORF Green=Tags(s)

TTTTGTAATACGACTCACTATAGGGCGGCCGGAATTCGTCGACTGGATCCGGTACCGAGGAGATCTGCC
 GCC**CGGATCGCC**

ATGACAAGGAGACAGCAAGTCCTACAAGCAAAAAGGAGCATTAGCAAAACATTCCAAGCACAGCTTATGC
 CCTGGAAGAGTATGTTCCACGGGAGAGAAGTGAAGCCAGTGGGTCGGACCTGGAACCTCAGAGGCTGA
 GAATGGTGTGGAGGAGAAAAAGAAAGCCTCGAGGTCGCCAACAGCCCAATCCCCTACCCCATCTGTGGAG
 GCGGACTCCCAGACCAGAAAGAAATCATTAGCCTATGGTCAAAATCCAGTTTTGATGGTGCCTCTTTAG
 CAAGTGATAAGAACGACTGTAAGAACAGAAAGCAAAATGACCCTAAGACTGAAAGAAAAAGTCTTCATC
 TTCCAGCCAGTACAAGGCCAATATGCACTTTACAAGTTGTTTCTTAGTGTCCCAACGGAGGAACCACTG
 AAGCAAAGCTTTACCTGTGCTCTACAGAAAGAAATACTATACCAAGGAAAGCTCTTTGTATCAGAAAAC
 GGATTTGTTTTATTCCAAGTCTTTGGAAAAGACACAAAGATCTCTATTCCAGCTTTCTCGGTAACCCCT
 AATAAAGAAAACAAAAGTCTTCTAGTGCCAAACGCCCTGATCATAGCAACAGTACAGACAGGTAC
 ATATTTGTCTCCTTACTCTCCAGAGATCAACTTACAAACTACTAAAATCTGTGTGTGGACACTTAGAAA
 ATACAAGTGTGGTAACAGTCCCAATCCATCTTCTGCTGAAAACAGTTTCCGAGCAGACCCCTTCATC
 TCTGCCTCTGGATTTCAATGATGAATTCTCAGATCTGGATGGAGTGGTTCAACAAAGAAGGCAAGACATG
 GAAGGATATAGCAGTTCTGGTTCTCAAACCTCCTGAATCTGAGAACTCTCGAGATTTCCATGCGACAGAA
 CCCAAACAGTTCTGAATGTCTCCAAGGGAGAAGCAAAGCCAACCTCGGCAGATGCCCATGTGAACAGAGT
 ACCTGAAGGAAAAGCCAAGAGTCTCCCTGTACAGGGTCTGTCAGAACTGTTGGAATCTTACATAAAGTC
 AAGTCTCAGAAATGTCCGATGCTTACCATATTCTTATATTCTATGCAATTGTTGCTGTGCACTAATCA
 TCTCGACCTTCTACATGAGATACAGAATTAATACTCTGGAGGAGCAGCTGGGGTTACTAACCTCCATTGT
 GGACACCATAATACTGAACAGGCAGCACCATCTGGCCTGAGGTACAAGTACAATTCAATGTGGAGGTT
 CTCTGTCAAGAGCTTACAGCTAACATAGTGAAATTAGAAAAGATACAAAATAACTTACAGAAGTTGCTTG
 AGAATGGTGAC

ACGCGTACGCGGCCGCTCGAGCAGAAACTCATCTCAGAAGAGGATCTGGCAGCAAATGATATCCTGGATT
 ACAAGGATGACGACGATAAGGTTTAA

Protein Sequence:

>RC228359 representing NM_001146319
 Red=Cloning site Green=Tags(s)

MTRRQQVLQAKRSIQQTFQAQLMPWKSFMHGREVKVPGPDLELSEAENGVEEKKKACRSPTAQSPTPSVE
 ADSPDQKKIISLWSKSSFDGASLASDKNDCKTESKNPKTERKSSSSSQYKANMHFKLFLSVPTEEPL
 KQSFTCALQKEILYQGLFVSENWICFHSKVFGKDKISIPAFSVTLIKTKTALLVPNALIIATVTDY
 IFVSLLSRDSTYKLLKSVCGHLENTSVGNPNSAENFRADRPSSLPLDFNDEFSDLGVVQRRQDM
 EGYSSSGSQTPESNSRDFHATESQTVLNVSKGEAKPTRADAHVNRVPEGKAKSLPVQGLSETVGLHKV
 KSQKCPMLHHILIFYAIVVICALIISTFYMYRINTLEEQLGLLTSIVDTHNTEQAAPSGLRSQVQFNVEV
 LCQELTANIVKLEKIQNNLQKLENGD

TRTRPLEQKLISEEDLAANDILDYKDDDDKV

Chromatograms:

https://cdn.origene.com/chromatograms/mk8060_f09.zip

Restriction Sites:

Sgfl-Mlul

Cloning Scheme:


ACCN: NM_001146319

ORF Size: 1341 bp

OTI Disclaimer: The molecular sequence of this clone aligns with the gene accession number as a point of reference only. However, individual transcript sequences of the same gene can differ through naturally occurring variations (e.g. polymorphisms), each with its own valid existence. This clone is substantially in agreement with the reference, but a complete review of all prevailing variants is recommended prior to use. [More info](#)

OTI Annotation: This clone was engineered to express the complete ORF with an expression tag. Expression varies depending on the nature of the gene.

Components: The ORF clone is ion-exchange column purified and shipped in a 2D barcoded Matrix tube containing 10ug of transfection-ready, dried plasmid DNA (reconstitute with 100 ul of water).

Reconstitution Method:

1. Centrifuge at 5,000xg for 5min.
2. Carefully open the tube and add 100ul of sterile water to dissolve the DNA.
3. Close the tube and incubate for 10 minutes at room temperature.
4. Briefly vortex the tube and then do a quick spin (less than 5000xg) to concentrate the liquid at the bottom.
5. Store the suspended plasmid at -20°C. The DNA is stable for at least one year from date of shipping when stored at -20°C.

RefSeq: [NM_001146319.3](#)

RefSeq ORF: 1344 bp

Locus ID: 65983

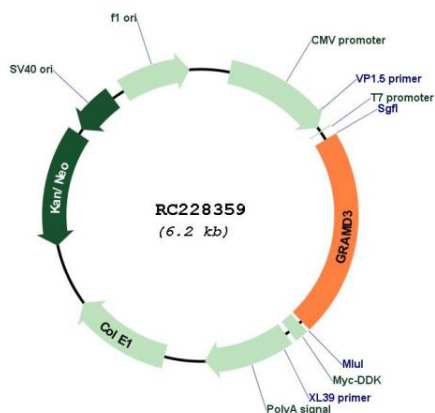
UniProt ID: [Q96HH9](#)

Cytogenetics: 5q23.2

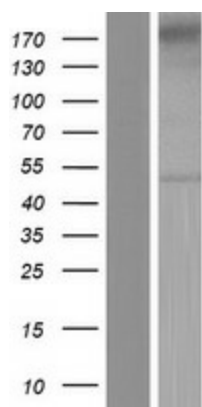
Protein Families: Transmembrane

MW: 49.7 kDa

Product images:



Circular map for RC228359



Western blot validation of overexpression lysate (Cat# [LY431387]) using anti-DDK antibody (Cat# [TA50011-100]). Left: Cell lysates from untransfected HEK293T cells; Right: Cell lysates from HEK293T cells transfected with RC228359 using transfection reagent MegaTran 2.0 (Cat# [TT210002]).