

## Product datasheet for **RC228357**

### **MLN64 (STARD3) (NM\_001165937) Human Tagged ORF Clone**

#### **Product data:**

Product Type:	Expression Plasmids
Product Name:	MLN64 (STARD3) (NM_001165937) Human Tagged ORF Clone
Tag:	Myc-DDK
Symbol:	MLN64
Synonyms:	CAB1; es64; MLN64
Mammalian Cell Selection:	Neomycin
Vector:	pCMV6-Entry (PS100001)
E. coli Selection:	Kanamycin (25 ug/mL)



[View online »](#)

**ORF Nucleotide Sequence:**

>RC228357 representing NM\_001165937  
 Red=Cloning site Blue=ORF Green=Tags(s)

TTTTGTAATACGACTCACTATAGGGCGGCCGGAATTCGTCGACTGGATCCGGTACCGAGGAGATCTGCC  
 GCC**CGCATCGCC**

ATGAGCAAGCTGCCAGGGAGCTGACCCGAGACTTGGAGCGCAGCCTGCCTGCCGTGGCCTCCCTGGGCT  
 CCTCACTGTCCCACAGCCAGAGCCTCTCCTCGCACCTCCTTCCGCGCCTGAGAAGCGAAGGGCCATCTC  
 TGATGTCCGCCGACCTTCTGTCTCTTCGTCACCTTCGACCTGCTCTTCACTCCTGCTCTGGATCATC  
 GAACTGAATACCAACACAGGCATCCGTAAGAAGTTGGAGCAGGAGATCATCCAGTACAACCTTAAAACTT  
 CCTTCTCGACATCTTTGTCTGGCCTTCTTCCGCTTCTCTGGACTGCTCCTAGGCTATGCCGTGCTGCG  
 GCTCCGGCACTGGTCACGACGCTGGTGTCCAGTGCATTCTCATTGTCAAGGTATCCTCTCTGAGCTGC  
 TCAGCAAAGGGGCACTTGGCTACCTGCTCCCATCGTCTCTTTGTCTCGCTGGTGGAGACCTGGTT  
 CCTTGACTTCAAAGTCTACCCAGGAAGCTGAAGAGGAGCGATTCTGCTCCTCCAGGGTATCTTCCCGC  
 CCAGGTTGCTGTTGCCCGTGGACCCCTGCTGTTCTCCGGTCTGTCCGAGGGACAGTTCTATTACCC  
 CCAGAATCCTTTGCAAGGCTGACAATGAATCAGATGAAGAAGTTGCTGGGAAGAAAAGTTTCTCTGCTC  
 AGGAGCGGGAGTACATCCGCCAGGGGAAGGAGGCCACGGCAGTGGTGGACCAGATCTTGGCCAGGAAGA  
 GAACTGGAAGTTTGAAGAATAATGAATATGGGGACACCGTGTACACATTGAAGTTCCCTTTACGGC  
 AAGACGTTATCTGAAGACCTTCTGCCCTGTCTGCGGAGCTCGTGTACCAGGAGGTGATCCTGCAGC  
 CCGAGAGGATGGTGTGTGGAACAAGACAGTACTGCCTGCCAGATCTGCAGCGAGTGGAAAGACAACAC  
 CCTCATCTCTATGACGTGTCTGAGGGGCTGCGGGCGCGTGGTCTCCCAAGGGACTTCGTGAATGTC  
 CGGCGCATTGAGCGGCGCAGGGACCGATACTTGTATCAGGGATCGCCACCTCACACAGTCCAAGCCCC  
 CGACGCAAAATATGTCGGGGGAGAGAATGGCCCTGGGGGCTTCATCGTGCTCAAGTCCGCCAGTAACCC  
 CGGTGTTTGCACCTTTGTCTGGATTCTTAATACAGATCTCAAGGGCCGCTGCCCGGTACCTATCCAC  
 CAGAGCCTCGCGCCACCATGTTTGAATTTGCCTTTCACCTGCGACAGCGCATCAGCGAGCTGGGGGCC  
 GGGCG

**ACGCGT**ACGCGGCCGCTCGAGCAGAACTCATCTCAGAAGAGGATCTGGCAGCAAATGATATCCTGGATT  
 ACAAGGATGACGACGATAAGGTTTAA

**Protein Sequence:**

>RC228357 representing NM\_001165937  
 Red=Cloning site Green=Tags(s)

MSKLPRELTRDLERSLPAVASLGSLSHSQSLSSHLLPPPEKRRAISDVRRTFCLFVTFDILLFISLLWII  
 ELNNTNGIRKNLEQEI IQYNFKTSFFDIFVLAFFRFSGLLLGYAVLRLRHWSRRWCPVHSSLRSSSLSC  
 SAKGHLATCSPSSLLSSPGWRPGLT SKSYPRKLKRSDSAPPGYLAQVAVARGPLLFSGALSEGQFYSP  
 PESFAGSDNESDEEVAGKKSFSAQEREYIRQGKEATAVVDQILAQEENWKFKNNEYGDTVYTIIEVPHG  
 KTFILKTFLPCPAELVYQEVILQPERMVLWNTVTACQILQRVEDNTLISYDVSAGAAGGVVSPRDFVNV  
 RRIERRRDRYLSSGIATSHSAKPPTHKYVRGENGGPGLIVLKSASNPRVCTFVWILNTDLKGRLPRYLIIH  
 QSLAATMFEFAHLRQRISELGARA

**TR**TRPLEQKLISEEDLAANDILDYKDDDDKV

**Chromatograms:**

[https://cdn.origene.com/chromatograms/mk6327\\_a12.zip](https://cdn.origene.com/chromatograms/mk6327_a12.zip)

**Restriction Sites:**

Sgfl-Mlul

**Cloning Scheme:**


**ACCN:** NM\_001165937

**ORF Size:** 1335 bp

**OTI Disclaimer:** The molecular sequence of this clone aligns with the gene accession number as a point of reference only. However, individual transcript sequences of the same gene can differ through naturally occurring variations (e.g. polymorphisms), each with its own valid existence. This clone is substantially in agreement with the reference, but a complete review of all prevailing variants is recommended prior to use. [More info](#)

**OTI Annotation:** This clone was engineered to express the complete ORF with an expression tag. Expression varies depending on the nature of the gene.

**Components:** The ORF clone is ion-exchange column purified and shipped in a 2D barcoded Matrix tube containing 10ug of transfection-ready, dried plasmid DNA (reconstitute with 100 ul of water).

- Reconstitution Method:**
1. Centrifuge at 5,000xg for 5min.
  2. Carefully open the tube and add 100ul of sterile water to dissolve the DNA.
  3. Close the tube and incubate for 10 minutes at room temperature.
  4. Briefly vortex the tube and then do a quick spin (less than 5000xg) to concentrate the liquid at the bottom.
  5. Store the suspended plasmid at -20°C. The DNA is stable for at least one year from date of shipping when stored at -20°C.

**RefSeq:** [NM\\_001165937.1](#), [NP\\_001159409.1](#)

**RefSeq ORF:** 1338 bp

**Locus ID:** 10948

**UniProt ID:** [Q14849](#)

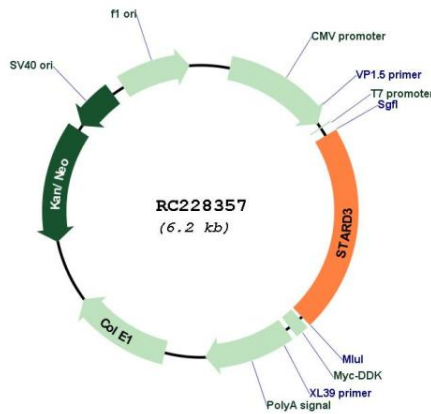
**Cytogenetics:** 17q12

**Protein Families:** Transmembrane

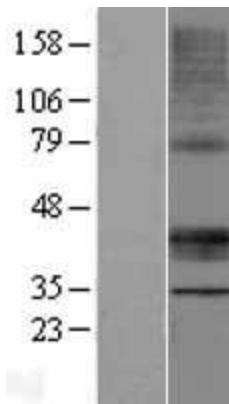
**MW:** 49.8 kDa

**Gene Summary:** This gene encodes a member of a subfamily of lipid trafficking proteins that are characterized by a C-terminal steroidogenic acute regulatory domain and an N-terminal metastatic lymph node 64 domain. The encoded protein localizes to the membranes of late endosomes and may be involved in exporting cholesterol. Alternative splicing results in multiple transcript variants.[provided by RefSeq, Oct 2009]

**Product images:**



Circular map for RC228357



Western blot validation of overexpression lysate (Cat# [LY431385]) using anti-DDK antibody (Cat# [TA50011-100]). Left: Cell lysates from untransfected HEK293T cells; Right: Cell lysates from HEK293T cells transfected with RC228357 using transfection reagent MegaTran 2.0 (Cat# [TT210002]).