

Product datasheet for **RC228353**

AGXT2L1 (ETNPPL) (NM_001146627) Human Tagged ORF Clone

Product data:

Product Type:	Expression Plasmids
Product Name:	AGXT2L1 (ETNPPL) (NM_001146627) Human Tagged ORF Clone
Tag:	Myc-DDK
Symbol:	AGXT2L1
Synonyms:	AGXT2L1
Mammalian Cell Selection:	Neomycin
Vector:	pCMV6-Entry (PS100001)
E. coli Selection:	Kanamycin (25 ug/mL)



[View online »](#)

ORF Nucleotide Sequence:

>RC228353 representing NM_001146627
 Red=Cloning site Blue=ORF Green=Tags(s)

TTTTGTAATACGACTCACTATAGGGCGGCCGGAATTCGTCGACTGGATCCGGTACCGAGGAGATCTGCC
 GCC**CGGATCGCC**

ATGGGACACTGTCACCCAGGAGTGGTCAAAGCTGCCCTGAAACAGATGGAAGTCTAAATACAAATTCTC
 GATTCCTCCACGACAACATTGTTGAGTATGCCAAACGCCTTTCAGCAACTCTGCCGAGAAAACCTCTGT
 TTGTTATTTTACAAATTCAGGATCCGAAGCCAACGACTTAGCCTTACGCCTGGCTCGGCAGTTCAGAGGC
 CACCAGGATGTGATCACTCTTGACCATGCTTACCATGGTACCTATCATCCTTAATTGAGATTAGCCCAT
 ATAAGTTTCAGAAAGGAAAAGATGTCAAAAAAGAAATTTGTACATGTGGCACCAACTCCAGATACTTACAG
 AGGAAAATATAGAGAAGACCATGCAGACTCAGCCAGTGCCTTATGCAGATGAAGTGAAGAAAATCATTGAA
 GATGCTCATAACAGTGAAGGAAGATTGCTGCCTTTATTGCTGAATCCATGCAGAGTTGTGGCGGACAAA
 TAATTCCTCCAGCAGGCTACTTCCAGAAAGTGGCAGAATATGTACACGGTGCAGGGGGTGTGTTTATAGC
 TGATGAAGTTCAAGTGGGCTTTGGCAGAGTTGGGAAACATTTCTGGAGCTTCCAGATGTATGGTGAAGAC
 TTTGTTCCAGACATCGTCACAATGGGAAAACCGATGGGCAACGGCCACCCGGTGGCATGTGTGGTAAACA
 CCAAAGAAATTGCAGAAGCCTTACGAGCTCTGGGATGGAATATTTTAATACGTATGGAGGAAATCCAGT
 ATCTTGTGCTGTTGGTTTGGCTGTCTGGATATAATTGAAAATGAAGACCTTCAAGGAAATGCCAAGAGA
 GTAGGGAATTATCTCACTGAGTTACTGAAAAACAGAAGGCTAAACACACTTTGATAGGAGATATTAGGG
 GCATTGGCCTTTTTATTGGAATTGATTTAGTGAAGGACCATCTGAAAAGGACCCCTGCCACAGCTGAAGC
 TCAGCACATCATCAAGATGAAAGAAAAACGAGTGCCTTCTCAGTGGCAGTGGACCTCATAGAAATGTA
 CTTAAAAATAAACACCTATGTGCTTCACTGAAGAAGATGCAAAGTTCATGGTGGACCAACTTGTAGGA
 TTCTAACAGTTTTAGAAGAAGCTATGGGAACCAAAACCGAAAGTGTGACCTCTGAGAATACTCCATGCAA
 AACAAAGATGCTGAAAGAAGCCACATAGAATGCTTAGGGACAGCACCCTGACTCCAAAGAAAATCCC
 AGCAGAAAGAGAAATGGAATGTGCACGGATACACATTCAGTCTCAGTAAGAGGCTCAAGACA

ACGCGTACGCGGCCGCTCGAGCAGAACTCATCTCAGAAGAGGATCTGGCAGCAAATGATATCCTGGATT
 ACAAGGATGACGACGATAAGGTTTAA

Protein Sequence:

>RC228353 representing NM_001146627
 Red=Cloning site Green=Tags(s)

MGHCHPGVVKAALKQMELLNTNSRFLHDNIVEYAKRLSATLPEKLSVCYFTNSGSEANDLALRLARQFRG
 HQDVITLDHAYHGHLSLIEISPYKFQKGDVKKEFVHVAPTPTYRKYREDHADSASAYAEVKKIIE
 DAHNSGRKIAAFIAESMQSCGGQIIPPAGYFQKVAEYVHGAGGVFIADEVQVGFGRVKGHFWSFQMYGED
 FVPDIVTMGKPMGNHPVACVVTKEIAEAFSSSGMEYFNNTYGGNPVSCAVGLAVLDIENEDLQNAKR
 VGNYLTELLKKQKAKHTLIGDIRGIGLFIGIDLVKDHLKRTPATAEAQHIYKMKKEKRVLLSADGPHRNV
 LKIKPPMCFTEEDAKFMVDQLDRILTVLEEAMGKTESVTSENTPCKTKMLKEAHIELLRDSTTDSKENP
 SRKRNGMCTDTHSLLSKRLKT

TRTRPLEQKLISEEDLAANDILDYKDDDDKV

Chromatograms:

https://cdn.origene.com/chromatograms/mk8060_b09.zip

Restriction Sites:

Sgfl-Mlul

Cloning Scheme:


ACCN: NM_001146627

ORF Size: 1323 bp

OTI Disclaimer: The molecular sequence of this clone aligns with the gene accession number as a point of reference only. However, individual transcript sequences of the same gene can differ through naturally occurring variations (e.g. polymorphisms), each with its own valid existence. This clone is substantially in agreement with the reference, but a complete review of all prevailing variants is recommended prior to use. [More info](#)

OTI Annotation: This clone was engineered to express the complete ORF with an expression tag. Expression varies depending on the nature of the gene.

Components: The ORF clone is ion-exchange column purified and shipped in a 2D barcoded Matrix tube containing 10ug of transfection-ready, dried plasmid DNA (reconstitute with 100 ul of water).

Reconstitution Method:

1. Centrifuge at 5,000xg for 5min.
2. Carefully open the tube and add 100ul of sterile water to dissolve the DNA.
3. Close the tube and incubate for 10 minutes at room temperature.
4. Briefly vortex the tube and then do a quick spin (less than 5000xg) to concentrate the liquid at the bottom.
5. Store the suspended plasmid at -20°C. The DNA is stable for at least one year from date of shipping when stored at -20°C.

RefSeq: [NM_001146627.2](#)

RefSeq ORF: 1326 bp

Locus ID: 64850

UniProt ID: [Q8TBG4](#)

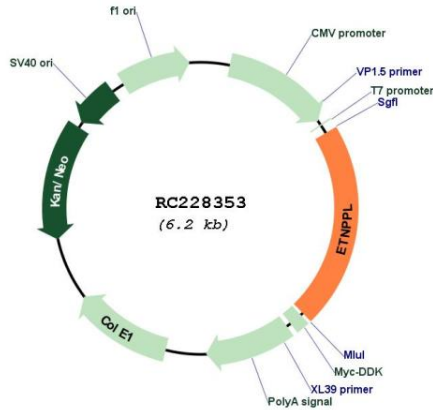
Cytogenetics: 4q25

Protein Families: Druggable Genome

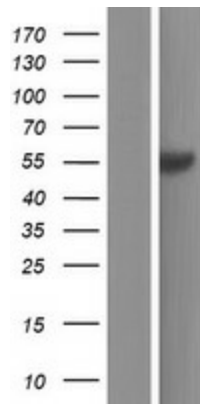
MW: 48.8 kDa

Gene Summary: Catalyzes the pyridoxal-phosphate-dependent breakdown of phosphoethanolamine, converting it to ammonia, inorganic phosphate and acetaldehyde.[UniProtKB/Swiss-Prot Function]

Product images:



Circular map for RC228353



Western blot validation of overexpression lysate (Cat# [LY431381]) using anti-DDK antibody (Cat# [TA50011-100]). Left: Cell lysates from untransfected HEK293T cells; Right: Cell lysates from HEK293T cells transfected with RC228353 using transfection reagent MegaTran 2.0 (Cat# [TT210002]).