

Product datasheet for **RC228351**

CCDC166 (NM_001162914) Human Tagged ORF Clone

Product data:

Product Type:	Expression Plasmids
Product Name:	CCDC166 (NM_001162914) Human Tagged ORF Clone
Tag:	Myc-DDK
Symbol:	CCDC166
Mammalian Cell Selection:	Neomycin
Vector:	pCMV6-Entry (PS100001)
E. coli Selection:	Kanamycin (25 ug/mL)
ORF Nucleotide Sequence:	>RC228351 representing NM_001162914 Red=Cloning site Blue=ORF Green=Tags(s)

TTTTGTAATACGACTCACTATAGGGCGGCCGGAATTCGTCGACTGGATCCGGTACCGAGGAGATCTGCC
GCC**CGATCGCC**

ATGGCGCCAAGAAAAAGCGCGGGCCGAGCGCAGGGAGCCAGCCAGGTGGTGCGCGGCCGCGGGTGCCG
AGCAGCCGCTATCGGAGCGCGCGCAGTACCTGCAACCGGAACACGCGTCTCGGAGCAGCTGGACAC
CTGCGAGGAGAGCGTTGACCAGGTGCTGCGAGAGAACGCCTTCTGGACCGGAGCGCTGCGCCTGCGC
GAGGAGAACC GGCTCTACGCCAGCTACGTGAGCGCGCGCCAGCGCTGCGCCAAGCCATCGTCCGGC
TGGACGACGAGAACC CGTGGACTAGCGCAGATCCACTGGCAGCGGGCGGAAGTGGCCTCGCTACCA
CGGGCGGAGGACGGGGTGCGCGCGCAGCTGTTGGAGATGGAGGCGCGCGGCACAGATGGCACAGCAG
GTGCAAGAGCTGCAGCCCTACAAGTGCTGCAGCTGGAGCAGCTGGCCCGGATCCGGGCGCTGGAGCGCG
AGCTGCTGCATATGCGCGTGGAGCACACGAGCTGCTCCACCGCGTGAAGCGGCGCTTCTGGAGGACAA
GGCGGCTTCGAGCGCGAGGGCGGTGAGCGGTGAGTCACTGGCGCGCGCGGAGCGGGAGGCGGGT
CGCGCGCTTGTGGCGCACACGAGGCCATCAAAGCGGACAACGGACGCTGCGGCAGGAGCTGCTGCTGC
TGCTCCGCGGACCCAGCTGCTGCACCACGCGCGCCAGCTGCTGGAACAGCGCGAGCAACTGCACCG
CGAGCACGAGGACACGCGGGACCTGGCGGTGTGCACGGTGGCTGCGCAGGGGCCCGGAGGCCCGCC
CTCTGGGAGCGGCGGCCTTCTCCAGCCACCTCGCGCCCGGGTCAATAGCCGCCCCATAAGCCGT
CGCGCGGCGCTCCAGACCCCGTGTGGTACCGTGCAGCGCGGCCCGGCGGCTCGTCCGTGGTCCC
GTGCGCGAGGCTTCCCGGGTCCCTCGTTGGTGTATCGAGCATGGACTCCAGGGTCCCATCGCTGGCC
ACTTCAAAGGTGGGATCCCGGATGCCATCCCTGACCGCTTCGCGCGCAGGCTCCCGGGCCCTGTCGCTGG
TGAGTCACTCGAGGGCTCTGGGATCTCTCGGGTCTCACCGAGGGTGTCTCACAGGACTCTCCG
CTCCACGAAGTCTGGCCCAAGCTTCTCTGCGCTGTCCGGGATCGGGATCCGGCTCTTCTCCCCCA
CAGTCGGAGGACAGCGTGAACGCTGAAGCTGCGGCGAGAAGCTCCCGGGTAGAGCC

ACGCGTACGCGGCGGCTCGAGCAGAACTCATCTCAGAAGAGGATCTGGCAGCAAATGATATCTGGATT
ACAAGGATGACGACGATAAGGTTTAA



Protein Sequence: >RC228351 representing NM_001162914
Red=Cloning site Green=Tags(s)

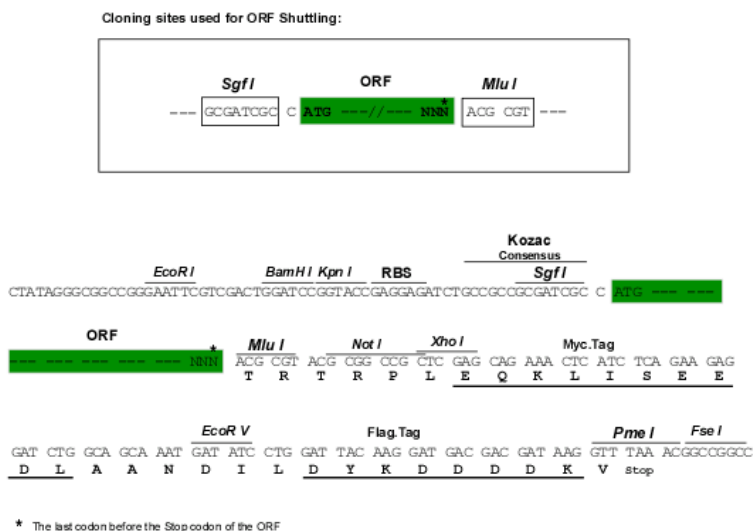
MAPKKKRGPSAGSQPGGAAAAGAEQPLSERAQYLQREHALLSEQLDTCESVDQVLRENAFLDREALRLR
 EENRLYASYVSARAQRCAKAIIVRLDEQNRVDLAQIHWQRAELASLYHGREDGVRAQLLEMEARAAQMAQQ
 VQELQPYKVLQLEQLARIRALERELLHMRVEHTQLLHRVKRRFLEDKAAFEREARQVQSLARRAEREAV
 RALVAHTQAIKADNGRLRQELLLLLRRRTQLLHHTRRQLLEQREQLHREHEDTRDLARVHGWLRRGPGGPP
 LWERPAFSQPTSRPGLAAPISPSRAASQTPSVVPSRAAPRASSVPSREASRVPSLVLSMDSRVPSLA
 TSKVGSRMPSLTASRAGSRALSLVQSLEGSIGSSSPRVSSQDTLRSTKSGPKLLSGLSRDRDPALLPP
 QSEDSVNAEAAAASPGR

TRTRPLEQKLISEEDLAANDILDYKDDDDKV

Chromatograms: https://cdn.origene.com/chromatograms/mk8039_b04.zip

Restriction Sites: SgfI-MluI

Cloning Scheme:



ACCN: NM_001162914

ORF Size: 1317 bp

OTI Disclaimer: The molecular sequence of this clone aligns with the gene accession number as a point of reference only. However, individual transcript sequences of the same gene can differ through naturally occurring variations (e.g. polymorphisms), each with its own valid existence. This clone is substantially in agreement with the reference, but a complete review of all prevailing variants is recommended prior to use. [More info](#)

OTI Annotation: This clone was engineered to express the complete ORF with an expression tag. Expression varies depending on the nature of the gene.

Components: The ORF clone is ion-exchange column purified and shipped in a 2D barcoded Matrix tube containing 10ug of transfection-ready, dried plasmid DNA (reconstitute with 100 ul of water).

- Reconstitution Method:**
1. Centrifuge at 5,000xg for 5min.
 2. Carefully open the tube and add 100ul of sterile water to dissolve the DNA.
 3. Close the tube and incubate for 10 minutes at room temperature.
 4. Briefly vortex the tube and then do a quick spin (less than 5000xg) to concentrate the liquid at the bottom.
 5. Store the suspended plasmid at -20°C. The DNA is stable for at least one year from date of shipping when stored at -20°C.

RefSeq: [NM_001162914.1](#), [NP_001156386.1](#)

RefSeq ORF: 1320 bp

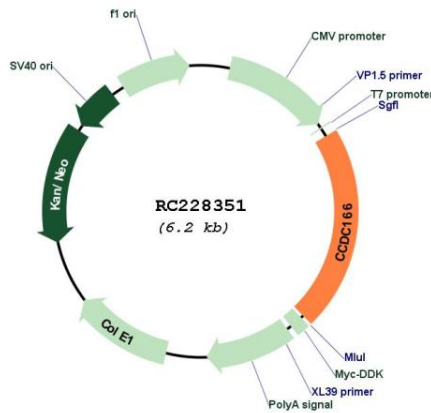
Locus ID: 100130274

UniProt ID: [P0CW27](#)

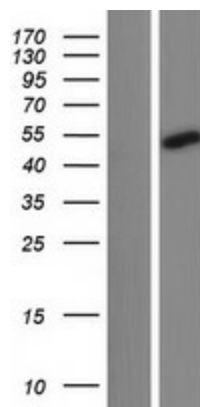
Cytogenetics: 8q24.3

MW: 48.5 kDa

Product images:



Circular map for RC228351



Western blot validation of overexpression lysate (Cat# [LY431379]) using anti-DDK antibody (Cat# [TA50011-100]). Left: Cell lysates from untransfected HEK293T cells; Right: Cell lysates from HEK293T cells transfected with RC228351 using transfection reagent MegaTran 2.0 (Cat# [TT210002]).