

Product datasheet for **RC228349**

IGF2BP1 (NM_001160423) Human Tagged ORF Clone

Product data:

Product Type:	Expression Plasmids
Product Name:	IGF2BP1 (NM_001160423) Human Tagged ORF Clone
Tag:	Myc-DDK
Symbol:	IGF2BP1
Synonyms:	CRD-BP; CRDBP; IMP-1; IMP1; VICKZ1; ZBP1
Mammalian Cell Selection:	Neomycin
Vector:	pCMV6-Entry (PS100001)
E. coli Selection:	Kanamycin (25 ug/mL)



[View online »](#)

ORF Nucleotide Sequence:

>RC228349 representing NM_001160423
 Red=Cloning site Blue=ORF Green=Tags(s)

TTTTGTAATACGACTCACTATAGGGCGGCCGGAATTCGTCGACTGGATCCGGTACCGAGGAGATCTGCC
 GCC**CGATCGCC**

ATGAACAAGCTTTACATCGGCAACCTCAACGAGAGCGTGACCCCGCGGACTTGGAGAAAGTGTTCGCG
 AGCACAAGATCTCTACAGCGGCCAGTTCTTGGTCAAATCCGGCTACGCCTTCGTGGACTGCCCGGACGA
 GCACTGGGCGATGAAGGCCATCGAACTTTCTCCGGGAAAGTAGAATTACAAGGAAAAACGCTTAGAGATT
 GAACATTCGGTGCCAAAAAACAAAGGAGCCGAAAAATCAAATCCGAAATATCCACCCAGCTCCGAT
 GGGAACTACTGGACAGCCTGCTGGCTCAGTATGGTACAGTAGAGAAGTGTGAGCAAGTGAACACCGAGAG
 TGAGACGGCAGTGGTGAATGTCACCTATCCAACCGGGAGCAGACCAGGCAGGCTGACGAGGTTCCCTG
 AAGATCCTGGCCATAATAACTTTGTAGGGCTCTCATTGGCAAGGAAGGACGGAACCTGAAGAAGGTAG
 AGCAAGATACCGAGACAAAAATCACCATCTCCTCGTTGCAAGACCTTACCCTTTACAACCTGAGAGGAC
 CATCACTGTGAAGGGGCCATCGAGAATTGTTGCAGGGCCGAGCAGGAAATAATGAAGAAAGTTCGGGAG
 GCCTATGAGAATGATGTGGCTGCCATGAGCCTGCACTCACCTGATCCCTGGCCTGAACCTGGCTGCTG
 TAGGTCTTTTCCAGCTTCATCCAGCGCAGTCCCGCCGCCTCCAGCAGCGTTACTGGGGCTGCTCCCTA
 TAGCTCCTTTATGCAGGCTCCCGAGCAGGAGATGGTGCAGGTGTTTATCCCGCCAGGCAGTGGGCGCC
 ATCATCGGCAAGAAGGGGAGCAGACATCAAACAGCTCTCCCGGTTTGCAGCGCCTCCATCAAGATTGCAC
 CACCCGAAACACCTGACTCCAAAGTTCGTATGGTTATCATCACTGGACCGCCAGAGGCCAAATCAAGGC
 TCAGGGAAGAATCTATGGCAAATCAAGGAGGAGAAGTCTTTGGTCCCAAGGAGGAAGTGAAGCTGGAG
 ACCCACATACGTGTGCCAGCATCAGCAGCTGGCCGGTTCATTGGCAAAGTGGAAAAACGGTGAACGAGT
 TGCAGAAATTTGACGGCAGCTGAGGTGGTAGTACCAAGAGACCAGACCCCTGATGAGAACGACCGGTCAT
 CGTGAAAATCATCGGACATTTCTATGCCAGTCAGATGGCTCAACGGAAGATCCGAGACATCCTGGCCAG
 GTTAAGCAGCAGCATCAGAAGGGACAGAGTAACCAGGCCAGGCACGGAGGAAG

ACGCGTACGCGGCCGCTCGAGCAGAACTCATCTCAGAAGAGGATCTGGCAGCAAATGATATCCTGGATT
 ACAAGGATGACGACGATAAGGTTTAA

Protein Sequence:

>RC228349 representing NM_001160423
 Red=Cloning site Green=Tags(s)

MNKLYIGNL NESVTPADLEKVF AEHKISYSQFLV KSGYAFVDCPDEHWAMKAIETFSGKVELQGKRLEI
 EHSVPKKQRSRKIQIRNIPPQLRWEVLDSL LAQYGTVENCEQVNTSEAVVNVYTSNREQRQADEVPL
 KILAHNNFVGR LIGKEGRNLK KVEQDTEK IITISLQDL TLYNPERTITVKGAIENCCRAEQEIMKKVRE
 AYENDVAAMSLQSHLIPGLNLA AVGLFPASSAVPPPPSSVTGAAPYSSFMQAPEQEMVQVFIPAQAVGA
 IIGKKQGHQIKLSRFASASIKIAPPETPDSKVRMVIITGPPEAQFKAQGR IYGLKKEENFFGPKEEVKLE
 THIRVPASAAGRVI GKGKTVNELQNL TAAEVVPRDQTPDENDQIVKIIGHFYASQMAQRKIRDILAQ
 VKQHQKQSNQAQARRK

TRTRPLEQKLISEEDLAANDILDYKDDDDKV

Chromatograms:

https://cdn.origene.com/chromatograms/mg4867_g12.zip

Restriction Sites:

Sgfl-Mlul

Cloning Scheme:

ACCN: NM_001160423

ORF Size: 1314 bp

OTI Disclaimer: Due to the inherent nature of this plasmid, standard methods to replicate additional amounts of DNA in E. coli are highly likely to result in mutations and/or rearrangements. Therefore, OriGene does not guarantee the capability to replicate this plasmid DNA. Additional amounts of DNA can be purchased from OriGene with batch-specific, full-sequence verification at a reduced cost. Please contact our customer care team at custsupport@origene.com or by calling 301.340.3188 option 3 for pricing and delivery.

The molecular sequence of this clone aligns with the gene accession number as a point of reference only. However, individual transcript sequences of the same gene can differ through naturally occurring variations (e.g. polymorphisms), each with its own valid existence. This clone is substantially in agreement with the reference, but a complete review of all prevailing variants is recommended prior to use. [More info](#)

OTI Annotation: This clone was engineered to express the complete ORF with an expression tag. Expression varies depending on the nature of the gene.

Components: The ORF clone is ion-exchange column purified and shipped in a 2D barcoded Matrix tube containing 10ug of transfection-ready, dried plasmid DNA (reconstitute with 100 ul of water).

Reconstitution Method:

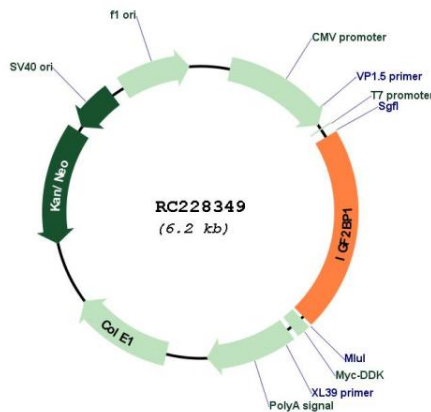
1. Centrifuge at 5,000xg for 5min.
2. Carefully open the tube and add 100ul of sterile water to dissolve the DNA.
3. Close the tube and incubate for 10 minutes at room temperature.
4. Briefly vortex the tube and then do a quick spin (less than 5000xg) to concentrate the liquid at the bottom.
5. Store the suspended plasmid at -20°C. The DNA is stable for at least one year from date of shipping when stored at -20°C.

RefSeq: [NM_001160423.2](#)

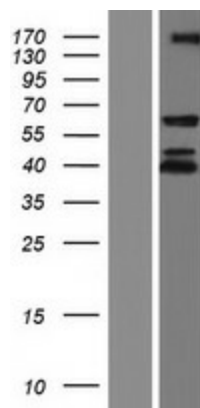
RefSeq ORF: 1317 bp
 Locus ID: 10642
 UniProt ID: [Q9NZI8](#)
 Cytogenetics: 17q21.32
 MW: 48.4 kDa

Gene Summary: This gene encodes a member of the insulin-like growth factor 2 mRNA-binding protein family. The protein encoded by this gene contains four K homology domains and two RNA recognition motifs. It functions by binding to the mRNAs of certain genes, including insulin-like growth factor 2, beta-actin and beta-transducin repeat-containing protein, and regulating their translation. Two transcript variants encoding different isoforms have been found for this gene. [provided by RefSeq, May 2009]

Product images:



Circular map for RC228349



Western blot validation of overexpression lysate (Cat# [LY431377]) using anti-DDK antibody (Cat# [TA50011-100]). Left: Cell lysates from untransfected HEK293T cells; Right: Cell lysates from HEK293T cells transfected with RC228349 using transfection reagent MegaTran 2.0 (Cat# [TT210002]).