

## Product datasheet for **RC228346**

### ODR4 (C1orf27) (NM\_001164245) Human Tagged ORF Clone

#### Product data:

Product Type:	Expression Plasmids
Product Name:	ODR4 (C1orf27) (NM_001164245) Human Tagged ORF Clone
Tag:	Myc-DDK
Symbol:	ODR4
Synonyms:	C1orf27; odr-4; TTG1
Mammalian Cell Selection:	Neomycin
Vector:	pCMV6-Entry (PS100001)
E. coli Selection:	Kanamycin (25 ug/mL)



[View online »](#)

**ORF Nucleotide Sequence:**

>RC228346 representing NM\_001164245  
 Red=Cloning site Blue=ORF Green=Tags(s)

TTTTGTAATACGACTCACTATAGGGCGGCCGGAATTCGTCGACTGGATCCGGTACCGAGGAGATCTGCC  
 GCC**CGCATCGCC**

ATGGGAAGAACCTACATTGTAGAAGAGACTGTTGGCCAGTATCTTTCAAACATAAATCTCCAAGGAAAGG  
 CTTTTGTCTCTGGCCTTTTAATAGGACAGTGTTGTCACAAAAGGATTATGTGATTCTTGCCACTAGAAC  
 GCCACCCAAAGAGGAGCAAAGTGAGAACCTCAAACATCCCAAAGCTAAGTTGGATAAATTGGATGAAGAA  
 TGGGCCACAGAACATGCCTGCCAGGTATCCAGAATGCTACCAGGGGGACTTTTAGTTCTTGGAGTATTTA  
 TTATTACTACTTTAGAAGTGGCAAATGATTTTCAAATGCCCTGCGTAGACTAATGTTTGTGTGAAAA  
 GTCTATAAATAGAAAAGAGATTGTGGAATTTACAGAGGAGGAAGTCTCAGAACGAGTGACACTTCACATT  
 TGTGCTTCTACAAAAAATATTTTGTGCAACTTATGATATCCATGATCCAAAGAGTTTCAGCAAGACCAG  
 CAGATTGGAAGTATCAAAGTGGATTATCATCCTCATGGCTTTCTTTAGAGTGTACAGTTCACATTAATAT  
 TCACATCCCACTTCTGCTACTTCTGTGAGCTATACTCTGGAGAAAAATACAAAGATGGACTTACACGC  
 TGGGCCAAGGAAATAGAAAATGGTGTATTTGATTAATGGACAAGTTAAAGATGAAGATTGTGACCTAT  
 TAGAAGGACAGCTCCTGAATTCAGACCACAGATCCACAGCCACAGTCCAGATATGTAGCGGTTCTGTAAA  
 CCTTAAGGGTGTGTGAAATGCAGAGCTTATATCCACAGCAGTAAACCCAAAGTTAAAGATGCTGTGCAG  
 GCAGTAAAGAGGGATATATTGAACACAGTTGCTGATCGTTGTGAAATGCTATTTGAGGATCTGCTTTTGA  
 ATGAAATTCAGAAAAAAGATTCTGAAAAAGAGTTCACAGTCCCTCCCTTATCGAGTCTTTGTTCCCT  
 TCCTGGATCCACTGTAATGTTGTGTGATTATAATTTGACGATGAGTCAGCTGAAGAAATCAGGGACCAT  
 TTTATGGAGATGTTGGATCACACAATTCAAATAGAAGATTTGAAATTCAGAGGAAACAAACACAGCTT  
 GTATGAGTCTTCTATGAATAGTCAAGCTTCATTGGACAACACAGATGATGAACAACCAAAACAACCAAT  
 TAAAACACAATGTTATTGAAAATTCAGCAAAACATAGGTGTGATTGCAGCATTTACAGTGCAGTCCTT  
 GCTGCGGTATCTCCTTTCATTACTTCAGTGAT

**ACGCGT**ACGCGGCCGCTCGAGCAGAACTCATCTCAGAAGAGGATCTGGCAGCAATGATATCCTGGATT  
 ACAAGGATGACGACGATAAGGTTTAA

**Protein Sequence:**

>RC228346 representing NM\_001164245  
 Red=Cloning site Green=Tags(s)

MGRTYIVEETVGQYLSNINLQGKAFVSGLLIGQCSSQKDYVILATRTPPKEEQSENLKHPKAKLDNLDEE  
 WATEHACQVSRMLPGLLVLVGVFIITLLELANDFQNALRRLMFAVEKSINRKRLWNFTEEVSEVTLHI  
 CASTKKIFCRTYDIHDPKSSARPADWKYQSGLSSWLSELECTVHINIHIPLSATSVSYTLEKNTKNGLTR  
 WAKEIENGVYLINGQVKDEDCDLEGLLNSDHRSTATVQICSGSVNLKGAVKCRAYIHSSKPKVKDAVQ  
 AVKRDILNTVADRCEMLFEDLLLNEIPEKKDSEKEFHVLPYRVFVPLPGSTVMLCDYKFDDESAEEIRDH  
 FMEMLDHTIQIEDLEIAEETNTACMSSSMNSQASLDNTDDEQPKQPIKTTMLLKIQQNIGVIAAFTVAVL  
 AAGISFHYSFSD

**TR**TRPLEQKLISEEDLAANDILDYKDDDDKV

**Chromatograms:**

[https://cdn.origene.com/chromatograms/mk8059\\_d11.zip](https://cdn.origene.com/chromatograms/mk8059_d11.zip)

**Restriction Sites:**

SgfI-MluI

**Cloning Scheme:**


**ACCN:** NM\_001164245

**ORF Size:** 1293 bp

**OTI Disclaimer:** The molecular sequence of this clone aligns with the gene accession number as a point of reference only. However, individual transcript sequences of the same gene can differ through naturally occurring variations (e.g. polymorphisms), each with its own valid existence. This clone is substantially in agreement with the reference, but a complete review of all prevailing variants is recommended prior to use. [More info](#)

**OTI Annotation:** This clone was engineered to express the complete ORF with an expression tag. Expression varies depending on the nature of the gene.

**Components:** The ORF clone is ion-exchange column purified and shipped in a 2D barcoded Matrix tube containing 10ug of transfection-ready, dried plasmid DNA (reconstitute with 100 ul of water).

**Reconstitution Method:**

1. Centrifuge at 5,000xg for 5min.
2. Carefully open the tube and add 100ul of sterile water to dissolve the DNA.
3. Close the tube and incubate for 10 minutes at room temperature.
4. Briefly vortex the tube and then do a quick spin (less than 5000xg) to concentrate the liquid at the bottom.
5. Store the suspended plasmid at -20°C. The DNA is stable for at least one year from date of shipping when stored at -20°C.

**RefSeq:** [NM\\_001164245.1](#), [NP\\_001157717.1](#)

**RefSeq ORF:** 1296 bp

**Locus ID:** 54953

**UniProt ID:** [Q5SWX8](#)

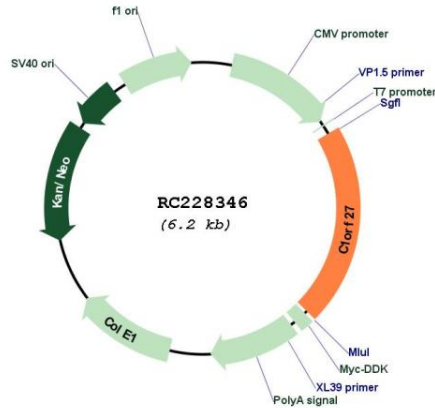
**Cytogenetics:** 1q31.1

**Protein Families:** Transmembrane

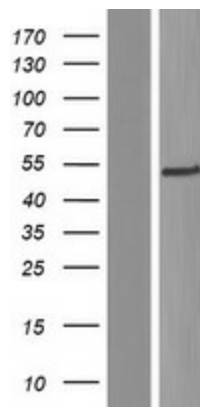
MW: 48.4 kDa

Gene Summary: May play a role in the trafficking of a subset of G-protein coupled receptors.  
[UniProtKB/Swiss-Prot Function]

**Product images:**



Circular map for RC228346



Western blot validation of overexpression lysate (Cat# [LY431374]) using anti-DDK antibody (Cat# [TA50011-100]). Left: Cell lysates from untransfected HEK293T cells; Right: Cell lysates from HEK293T cells transfected with RC228346 using transfection reagent MegaTran 2.0 (Cat# [TT210002]).