

## Product datasheet for **RC228344**

### **DISC1 (NM\_001164550) Human Tagged ORF Clone**

#### **Product data:**

Product Type:	Expression Plasmids
Product Name:	DISC1 (NM_001164550) Human Tagged ORF Clone
Tag:	Myc-DDK
Symbol:	DISC1
Synonyms:	C1orf136; SCZD9
Mammalian Cell Selection:	Neomycin
Vector:	pCMV6-Entry (PS100001)
E. coli Selection:	Kanamycin (25 ug/mL)



[View online »](#)

**ORF Nucleotide Sequence:**

>RC228344 representing NM\_001164550  
 Red=Cloning site Blue=ORF Green=Tags(s)

TTTTGTAATACGACTCACTATAGGGCGGCCGGGAATTCGTCGACTGGATCCGGTACCGAGGAGATCTGCC  
 GCC**GCGATCGCC**

ATGCCAGGCGGGGTCTCAGGGCGCCACGCCCGCCGGCGGGCGGCGGTGAGCCACCGCGCAGGCA  
 GCCGGGATTGCTTACCACCTGCAGCGTGCCTTCGAGAGCGCGGCTGGCACGAGGCCGGCTACATGAG  
 AAGCTCGACAGGGCCTGGGATCGGGTCTTTCCCCAGCAGTGGGCACACTGTTCCGGTCCAGGAGGG  
 GTGTCTGGCGAGGAGTCCACCACTCGGAGTCCAGGGCCAGACAGTGTGGCCTTGACTCGAGAGGCTCT  
 TGGTCCGGAGCCCTGTTCCAAGAGTGCAGCAGCCCTACTGTGACCTCTGTGAGAGGAACCTCGGCGCA  
 CTTTGGGATTCAGCTCAGAGGTGGCACCAGATTGCCTGACAGGCTTAGCTGGCCGTGGCCCTGGGAGT  
 GCTGGGTGGCAGCAAGAGTTTCAGCCATGGATAGTTCTGAGACCCTGGACGCCAGCTGGGAGGCAGCCT  
 GCAGCGATGGAGCAAGGCGTGTCCGGGCAGCAGGCTCTCTGCCATCAGCAGAGTTGAGTAGCAACAGCTG  
 CAGCCCTGGCTGTGGCCCTGAGGTCCCCCAACCCTCCTGGCTCTCACAGTGCCTTTACCTCAAGCTTT  
 AGCTTTATTTCGGCTCTCGCTTGGCTCTGCCGGGAACGTGGAGAAGCAGAAGGCTGCCACCATCCAGAG  
 AGGCTGAGTCCCATTGCCAGAGCCCCAGGAGATGGGAGCCAAAGCTGCCAGCTTGGACGGGCTCACGA  
 GGACCCGCGATGTCTCTCGGCCCTTCACTCTTGGCTACACGGGTCTCTGCAGACTTGGCCAGGCC  
 GCAAGGAACAGCTCCAGGCCAGAGCGTGACATGCATTCTTACCAGACATGGACCCTGGCTCCTCCAGTT  
 CTCTGGATCCCTCACTGGCTGGCTGTGGTGGTATGGGAGCAGCGGCTCAGGGGATGCCACTCTTGGGA  
 CACCCTGCTCAGGAAATGGGAGCCAGTGTGCGGGACTGCCTGCTGAGAAACCGGAGGCAGATGGAGGTA  
 ATATCCTAAGATTAACACTTCAGAACTTCAGGAAGATGCAGTTGAGAATGATGATTATGATAAAGGAA  
 GTCACCTGGAAGGTTACATTTTCATTTGGGGTGAACAGCAACTGTGGATACGGATCATGAAAATTGACAA  
 TGGAAAATGGGCATGCCATTCTGGAACCTTTCCAGCTTTTTTCCAGAGCCAGCTGGAACCAATTGCTTT  
 GGATCCACCATGGAAGCCTCGACATCC

**ACGCGT**ACGCGGCCGCTCGAGCAGAACTCATCTCAGAAGAGGATCTGGCAGCAAATGATATCCTGGATT  
 ACAAGGATGACGACGATAAGGTTTAA

**Protein Sequence:**

>RC228344 representing NM\_001164550  
 Red=Cloning site Green=Tags(s)

MPGGGPQGAPAAAGGGVSHRAGSRDCLPPAACFRRRLARRPGYMRSSSTGPGIGFLSPAVGTLFRFPGG  
 VSGEESHSESRARQCGLDSRGLLVRSPVSKSAAAPT VTSVRGTS AHFGIQLRGGTRL PDRLSWPCGPGS  
 AGWQQEFAAMDSSETLDASWEAACSDGARRVRAAGSLPSAELSSNSCSPGCGPEVPPTPPGSHSAFTSSF  
 SFIRLSLGSAGERGEAEGCPPSREAESHCQSPQEMGAKAASLDGPHEDPRCLSRPF SLLATRVSADLAQA  
 ARNSSRPERDMHSLPMDPGSSSLDPSLAGCGDGS SSGDAHSWDTLLRKWEPVLRDCLLRNRRQMEV  
 ISLRKLQKLQEDAVENDDYDKGSHWKGYIFIWGEQQLWIRIMKIDNGKWACHSGTFPSFFPEPAGTNCF  
 GSTMEASTS

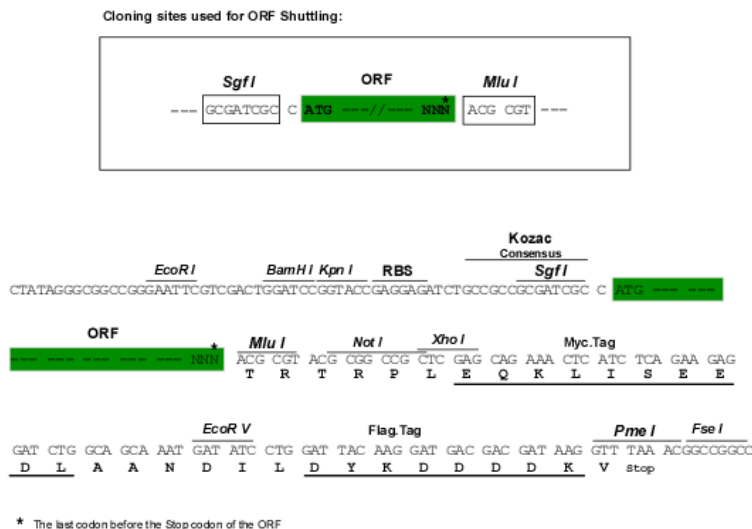
**TR**TRPLEQKLISEEDLAANDILDYKDDDDKV

**Chromatograms:**

[https://cdn.origene.com/chromatograms/mk8059\\_c10.zip](https://cdn.origene.com/chromatograms/mk8059_c10.zip)

**Restriction Sites:**

Sgfl-Mlul

**Cloning Scheme:**


**ACCN:** NM\_001164550

**ORF Size:** 1287 bp

**OTI Disclaimer:** The molecular sequence of this clone aligns with the gene accession number as a point of reference only. However, individual transcript sequences of the same gene can differ through naturally occurring variations (e.g. polymorphisms), each with its own valid existence. This clone is substantially in agreement with the reference, but a complete review of all prevailing variants is recommended prior to use. [More info](#)

**OTI Annotation:** This clone was engineered to express the complete ORF with an expression tag. Expression varies depending on the nature of the gene.

**Components:** The ORF clone is ion-exchange column purified and shipped in a 2D barcoded Matrix tube containing 10ug of transfection-ready, dried plasmid DNA (reconstitute with 100 ul of water).

**Reconstitution Method:**

1. Centrifuge at 5,000xg for 5min.
2. Carefully open the tube and add 100ul of sterile water to dissolve the DNA.
3. Close the tube and incubate for 10 minutes at room temperature.
4. Briefly vortex the tube and then do a quick spin (less than 5000xg) to concentrate the liquid at the bottom.
5. Store the suspended plasmid at -20°C. The DNA is stable for at least one year from date of shipping when stored at -20°C.

**RefSeq:** [NM\\_001164550.2](#)

**RefSeq ORF:** 1290 bp

**Locus ID:** 27185

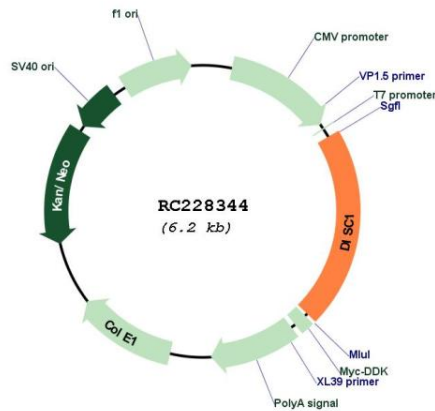
**Cytogenetics:** 1q42.2

**MW:** 45.2 kDa

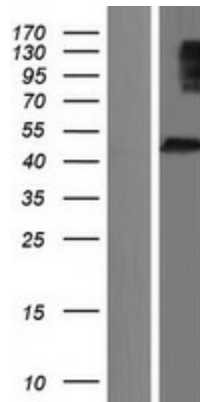
**Gene Summary:**

This gene encodes a protein with multiple coiled coil motifs which is located in the nucleus, cytoplasm and mitochondria. The protein is involved in neurite outgrowth and cortical development through its interaction with other proteins. This gene is disrupted in a t(1;11) (q42.1;q14.3) translocation which segregates with schizophrenia and related psychiatric disorders in a large Scottish family. Alternate transcriptional splice variants, encoding different isoforms, have been characterized. [provided by RefSeq, Jul 2008]

**Product images:**



Circular map for RC228344



Western blot validation of overexpression lysate (Cat# [LY431372]) using anti-DDK antibody (Cat# [TA50011-100]). Left: Cell lysates from untransfected HEK293T cells; Right: Cell lysates from HEK293T cells transfected with RC228344 using transfection reagent MegaTran 2.0 (Cat# [TT210002]).