

## Product datasheet for **RC228339**

### Perilipin 3 (PLIN3) (NM\_001164194) Human Tagged ORF Clone

#### Product data:

Product Type:	Expression Plasmids
Product Name:	Perilipin 3 (PLIN3) (NM_001164194) Human Tagged ORF Clone
Tag:	Myc-DDK
Symbol:	Perilipin 3
Synonyms:	M6PRBP1; PP17; TIP47
Mammalian Cell Selection:	Neomycin
Vector:	pCMV6-Entry (PS100001)
E. coli Selection:	Kanamycin (25 ug/mL)



[View online »](#)

**ORF Nucleotide Sequence:**

>RC228339 representing NM\_001164194  
 Red=Cloning site Blue=ORF Green=Tags(s)

TTTTGTAATACGACTCACTATAGGGCGGCCGGAATTCGTCGACTGGATCCGGTACCGAGGAGATCTGCC  
 GCCCGCATCGCC

ATGTCTGCCGACGGGCAGAGGCTGATGGCAGCACCCAGGTGACAGTGGAGAACCAGGTACAGCAGCCCA  
 GTGTGGTGGACCGTGTGGCCAGCATGCCTCTGATCAGCTCCACCTGCGACATGGTGTCCGACGCTATGC  
 CTCACCAAGGAGAGCTACCCGCACATCAAGACTGTCTGCGACGACGAGAGAAGGGAGTGAGGACCCTC  
 ACGGCGGTGCTGTGACGGGGCTCAGCCGATCCTCTCCAAGCTGGAGCCCCAGATTGCATCAGCCAGCG  
 AATACGCCACAGGGGGCTGGACAAGTTGGAGGAGAACCCTCCCATCCTGCAGCAGCCCAGGAGAAGGT  
 GTCGGGGGCCAAGAGATGGTGTCTAGCGCCAAGGACACGGTGGCCACCAATTGTCGGAGGCGGTGGAC  
 GCGACCCGCGGTGCTGTGACAGCGGGCTGGACAAGACAAAGTCCGTAGTGACCGCGCGCTCAATCGG  
 TCATGGGCTCCCGCTTGGCCAGATGGTGTGAGTGGGGTGCACACGGTGTGGGGAAGTCGGAGGAGTG  
 GCGGACAACCACCTGCCCTTACGGATGCCGAAGTGGCCGCATCGCCACATCCCTGGATGGCTTTGAC  
 GTCGCGTCCGTGACGACGAGCGGCAGGAACAGAGCTACTTCGTACGTCTGGGCTCCCTGTCGGAGAGGC  
 TCGGCGACGACGCTATGAGCACTCGCTGGCAAGCTTCGAGCCACCAAGCAGAGGGCACAGGAGGCTCT  
 GCTGCAGCTGTGCGAGGTCTAAGCCTGATGAAACTGTCAAGCAAGGCGTTGATCAGAAGCTGGTGGAA  
 GGCCAGGAGAAGCTGCACCAGATGTGGCTCAGCTGGAACCAGAAGCAGCTCCAGGGCCCCGAGAAGGAGC  
 CGCCCAAGCCAGAGCAGGTGAGTCCCGGGCGCTCACCATGTTCCGGGACATTGCCAGCAACTGCAGGC  
 CACCTGTACCTCCCTGGGGTCCAGCATTAGGGCTCCCAACATGTGAAGACCAGGTGCAGCAGGCC  
 CGCCGCCAGGTGGAGGACCTCCAGGCCAGTTCAGCATCCACTCCTCCAGGACCTGCCAGCAGCA  
 TTCTGGCCAGAGCCGTGAGCGTGTGCCAGCGCCCGAGGCCCTGGACCACATGGTGGAAATATGTGGC  
 CCAGAACACACCTGTACGTGGCTCGTGGGACCCTTGGCCCTGGAATCACTGAGAAAGCCCCGGAGGAG  
 AAGAAG

ACGCGTACGCGCGCGCTCGAGCAGAACTCATCTCAGAAGAGGATCTGGCAGCAAATGATATCCTGGATT  
 ACAAGGATGACGACGATAAGGTTTAA

**Protein Sequence:**

>RC228339 representing NM\_001164194  
 Red=Cloning site Green=Tags(s)

MSADGAEADGSTQVTVEEPVQQPSVVDRAVSMPLISSTCDMVSAAYASTKESYPHIKTVCDAAEKVRTL  
 TAAAVSGAQPIILSKLEPQIASASEYAHRLDKLEENLPILQQPTEKVSQAQEMVSSAKDTVATQLSEAVD  
 ATRGAVQSGVDKTKSVVTGGVQSVMGSRLLGQMVLSGVDTVLTKSEEWADNHLPLTDAELARIATSLDGF  
 VASVQQRQEQSYFVRLGSLSERLRQHAYEHSGLKLRATKQRAQEALLQLSQVLSLMEVTKQGVQKLV  
 GQEKLHQMWLQSWNQQLQGPEKPPKPEQVESRALTMFRDIAQQLQATCTSLGSSIQGLPTNVKQVQQA  
 RRQVEDLQATFSSIHQFQDLSSSILAQSRERVASAREALDHMVEYVAQNTPVTLVGPFAFGITEKAPEE  
 KK

TRTRPLEQKLISEEDLAANDILDYKDDDDKV

**Chromatograms:**

[https://cdn.origene.com/chromatograms/mk8058\\_g09.zip](https://cdn.origene.com/chromatograms/mk8058_g09.zip)

**Restriction Sites:**

Sgfl-Mlul

**Cloning Scheme:**


**ACCN:** NM\_001164194

**ORF Size:** 1266 bp

**OTI Disclaimer:** The molecular sequence of this clone aligns with the gene accession number as a point of reference only. However, individual transcript sequences of the same gene can differ through naturally occurring variations (e.g. polymorphisms), each with its own valid existence. This clone is substantially in agreement with the reference, but a complete review of all prevailing variants is recommended prior to use. [More info](#)

**OTI Annotation:** This clone was engineered to express the complete ORF with an expression tag. Expression varies depending on the nature of the gene.

**Components:** The ORF clone is ion-exchange column purified and shipped in a 2D barcoded Matrix tube containing 10ug of transfection-ready, dried plasmid DNA (reconstitute with 100 ul of water).

- Reconstitution Method:**
1. Centrifuge at 5,000xg for 5min.
  2. Carefully open the tube and add 100ul of sterile water to dissolve the DNA.
  3. Close the tube and incubate for 10 minutes at room temperature.
  4. Briefly vortex the tube and then do a quick spin (less than 5000xg) to concentrate the liquid at the bottom.
  5. Store the suspended plasmid at -20°C. The DNA is stable for at least one year from date of shipping when stored at -20°C.

**RefSeq:** [NM\\_001164194.2](#)

**RefSeq ORF:** 1269 bp

**Locus ID:** 10226

**UniProt ID:** [O60664](#)

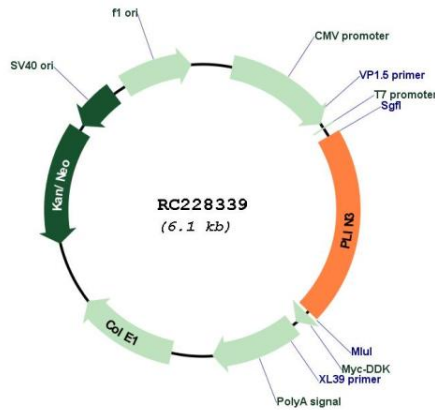
**Cytogenetics:** 19p13.3

**Protein Families:** Druggable Genome

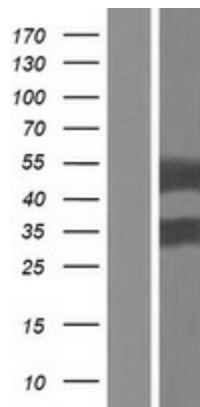
**MW:** 45.6 kDa

**Gene Summary:** Mannose 6-phosphate receptors (MPRs) deliver lysosomal hydrolase from the Golgi to endosomes and then return to the Golgi complex. The protein encoded by this gene interacts with the cytoplasmic domains of both cation-independent and cation-dependent MPRs, and is required for endosome-to-Golgi transport. This protein also binds directly to the GTPase RAB9 (RAB9A), a member of the RAS oncogene family. The interaction with RAB9 has been shown to increase the affinity of this protein for its cargo. Multiple transcript variants encoding different isoforms have been found for this gene.[provided by RefSeq, Aug 2009]

**Product images:**



Circular map for RC228339



Western blot validation of overexpression lysate (Cat# [LY431367]) using anti-DDK antibody (Cat# [TA50011-100]). Left: Cell lysates from untransfected HEK293T cells; Right: Cell lysates from HEK293T cells transfected with RC228339 using transfection reagent MegaTran 2.0 (Cat# [TT210002]).