

Product datasheet for **RC228338**

ODR4 (C1orf27) (NM_001164246) Human Tagged ORF Clone

Product data:

Product Type:	Expression Plasmids
Product Name:	ODR4 (C1orf27) (NM_001164246) Human Tagged ORF Clone
Tag:	Myc-DDK
Symbol:	ODR4
Synonyms:	C1orf27; odr-4; TTG1
Mammalian Cell Selection:	Neomycin
Vector:	pCMV6-Entry (PS100001)
E. coli Selection:	Kanamycin (25 ug/mL)



[View online »](#)

ORF Nucleotide Sequence:

>RC228338 representing NM_001164246
 Red=Cloning site Blue=ORF Green=Tags(s)

TTTTGTAATACGACTCACTATAGGGCGGCCGGAATTCGTCGACTGGATCCGGTACCGAGGAGATCTGCC
 GCC**GCGATCGCC**

ATGGGAAGAACCTACATTGTAGAAGAGACTGTTGGCCAGTATCTTCAAACATAAATCTCCAAGGAAAGG
 CTTTTGTCTCTGGCCTTTTAATAGGACAGTGTTGTCACAAAAGGATTATGTGATTCTTGCCACTAGAAC
 GCCACCCAAAGAGGAGCAAAGTGAGAACCTCAAACATCCCAAAGCTAAGTTGGATAAATTGGATGAAGAA
 TGGGCCACAGAACATGCCTGCCAGCTAATGTTTGTGTGGAAAAGTCTATAAATAGAAAAGAGATTGTGGA
 ATTTACAGAGGAGGAAGTCTCAGAACGAGTGACACTTCACATTTGTGCTTCTACAAAAAATATTTTTG
 TCGAATTATGATATCCATGATCCAAAGAGTTCAGCAAGACCAGCAGATTGGAAGTATCAAAGTGGATTA
 TCATCCTCATGGCTTTCTTTAGAGTGTACAGTTCACATTAATATTCACATCCCACTTTCTGCTACTTCTG
 TCAGCTATACTCTGGAGAAAAATACAAAGAATGGACTTACACGCTGGGCCAAGGAAATAGAAAATGGTGT
 TTATTTGATTAATGGACAAGTTAAAGATGAAGATTGTGACCTATTAGAAGGACAGAAAAATCTTCTAGA
 GAAATACTCAAGCAACTAGTCATTCTTTTGATGTCAGAGTGCTAACGCAGTTGCTCCTGAATTCAGACC
 ACAGATCCACAGCCACAGTCCAGATATGTAGCGGTTCTGTAACCTTAAGGGTGTGTGAAATGCAGAGC
 TTATATCCACAGCAGTAAACCCAAAGTTAAAGATGCTGTGCAGGCAGTAAAGAGGGATATATTGAACACA
 GTTGCTGATCGTTGTGAAATGCTATTTGAGGATCTGCTTTTGAATGAAATTCAGAAAAAAGATTCTG
 AAAAGAGTTCACGCTCCTCCCTATCGAGTCTTTGTTCCCTTCTGGATCCACTGTAATGTTGTGTGA
 TTATAATTTGACGATGAGTCAGCTGAAGAAATCAGGGACCATTTATGGAGATGTTGGATCACACAATT
 CAAATAGAAGATTTGAAATTGCAGAGGAAACAAACACAGCTTGATGAGTCTTCTATGAATAGTCAAG
 CTTCAATTGGACAACACAGATGATGAACAACCAAAACCAATTAACACTACAATGTTATTGAAAATTCA
 GCAAAACATAGGTGTATTGCAGCATTTACAGTTGCAGTCTTGTGCGGGTATCTCCTTTCATTACTTC
 AGTGAT

ACGCGTACGCGGCCGCTCGAGCAGAACTCATCTCAGAAGAGGATCTGGCAGCAATGATATCCTGGATT
 ACAAGGATGACGACGATAAGGTTTAA

Protein Sequence:

>RC228338 representing NM_001164246
 Red=Cloning site Green=Tags(s)

MGRTYIVEETVGQYLSNINLQGKAFVSGLLIGQCSSQKDYVILATRTPPKEEQSENLKHPKAKLDNLDEE
 WATEHACQLMFAVEKSINRKRLWNFTEEEVSERVTLHICASTKKIFCRTYDIHDPKSSARPADWKYQSGL
 SSSWLSLECTVHINIHIPLSATSVSYTLEKNTKNGLTRWAKEIENGVYLINGQVKDEDCDLEGGQKSSR
 GNTQATSHSFDVRVLTQLLLNSDHRSTATVQICSGSVNLKGAVKCRAYIHSSKPKVKDAVQAVKRDILNT
 VADRCCEMLFEDLLLNEIPEKKDSEKEFHVLPYRVFVPLPGSTVMLCDYKFDDESAAEIRDFHMEMLDHTI
 QIEDLEIAEETNTACMSSMNSQASLDNTDDEQPKQPIKTTMLLKIQQNIGVIAAFVAVLAAGISFHYF
 SD

TRTRPLEQKLISEEDLAANDILDYKDDDDKV

Chromatograms:

https://cdn.origene.com/chromatograms/mk8058_g08.zip

Restriction Sites:

Sgfl-Mlul

Cloning Scheme:


ACCN: NM_001164246

ORF Size: 1266 bp

OTI Disclaimer: The molecular sequence of this clone aligns with the gene accession number as a point of reference only. However, individual transcript sequences of the same gene can differ through naturally occurring variations (e.g. polymorphisms), each with its own valid existence. This clone is substantially in agreement with the reference, but a complete review of all prevailing variants is recommended prior to use. [More info](#)

OTI Annotation: This clone was engineered to express the complete ORF with an expression tag. Expression varies depending on the nature of the gene.

Components: The ORF clone is ion-exchange column purified and shipped in a 2D barcoded Matrix tube containing 10ug of transfection-ready, dried plasmid DNA (reconstitute with 100 ul of water).

Reconstitution Method:

1. Centrifuge at 5,000xg for 5min.
2. Carefully open the tube and add 100ul of sterile water to dissolve the DNA.
3. Close the tube and incubate for 10 minutes at room temperature.
4. Briefly vortex the tube and then do a quick spin (less than 5000xg) to concentrate the liquid at the bottom.
5. Store the suspended plasmid at -20°C. The DNA is stable for at least one year from date of shipping when stored at -20°C.

RefSeq: [NM_001164246.1](#), [NP_001157718.1](#)

RefSeq ORF: 1269 bp

Locus ID: 54953

UniProt ID: [Q5SWX8](#)

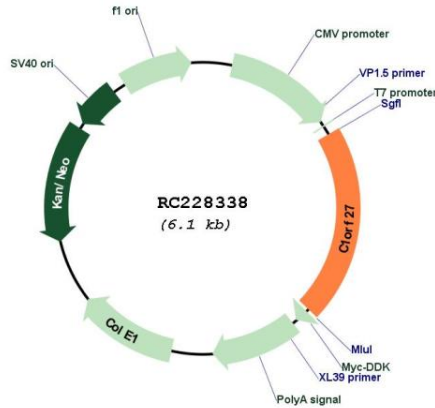
Cytogenetics: 1q31.1

Protein Families: Transmembrane

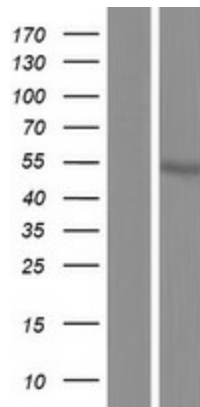
MW: 47.4 kDa

Gene Summary: May play a role in the trafficking of a subset of G-protein coupled receptors.
[UniProtKB/Swiss-Prot Function]

Product images:



Circular map for RC228338



Western blot validation of overexpression lysate (Cat# [LY431366]) using anti-DDK antibody (Cat# [TA50011-100]). Left: Cell lysates from untransfected HEK293T cells; Right: Cell lysates from HEK293T cells transfected with RC228338 using transfection reagent MegaTran 2.0 (Cat# [TT210002]).