

## Product datasheet for RC228331

### RASSF8 (NM\_001164746) Human Tagged ORF Clone

#### Product data:

Product Type:	Expression Plasmids
Product Name:	RASSF8 (NM_001164746) Human Tagged ORF Clone
Tag:	Myc-DDK
Symbol:	RASSF8
Synonyms:	C12orf2; HOJ1
Mammalian Cell Selection:	Neomycin
Vector:	pCMV6-Entry (PS100001)
E. coli Selection:	Kanamycin (25 ug/mL)
ORF Nucleotide Sequence:	>RC228331 representing NM_001164746 Red=Cloning site Blue=ORF Green=Tags(s)

TTTTGTAATACGACTCACTATAGGGCGGCCGGAATTCGTCGACTGGATCCGGTACCGAGGAGATCTGCC  
GCC**CGATCGCC**

ATGGAACCTAAAGTATGGGTGGATGGAGTTCAGAGGATTGTTTGTGGAGTCACTGAAGTCACAACCTTGCC  
AGGAGGTTGTATAGCCTTAGCTCAAGCAATAGGTCGAAGTACACCCTTATAGAGAAATGGAG  
AGATACTGAAAGACACTTAGCACCTCATGAAAATCCTATCATATCCTTAAACAAATGGGGCAGTATGCT  
AGTGATGTGCAGCTCATTCTACGACGAAGTGGCCGCTCTCAGTGAGCGACCCACTTCAGACAGTGTGG  
CTCGAATTCCTGAAAGAAGTTTATACAGGCAGAGTCTGCCCCCTTAGCTAAACTGAGGCCTCAGATTGA  
CAAATCAATCAAAAGGAGGGAACCGAAAAGGAAATCACTGACATTTACAGGAGGTGCCAAAGGATTAATG  
GACATTTTTGGAAAAGGTAAGAAAAGTAAAGCAAAAGGTGCTGAATAACTGCAAAACAACAGCAG  
ATGAGTTGAAGAAGCTAATCCGTCTGCAGACAGAGAAGCTTCAATCCATTGAGAAACAGCTGGAATCTAA  
TGAAATAGAAAATAGATTTTGGGAGCAAAAGTATAATTCACACCTTGAAGAGGAAATGTCCGTCTAGAG  
CAAAAGATCAAAAGAACGATGTAGAAATTGAGGAGGAAGAAATCTGGGAAAATGAATTACAGATTGAAC  
AGGAAAATGAAAACAGCTGAAGGATCAACTTCAAGAAAATAGACAGAAAATAACAGAATGTGAAAACAA  
ATTAAGGACTATTTGGCACAGATCCGGACTATGGAAAGTGGTCTTGAAGCAGAAAATGCAACGGGAA  
GTTCAAGAGGCACAGGTCAATGAGGAAGAGTTAAAGGAAAGTTCGGTAAGGTCAAAGGGGAGATTGACA  
TTCAAGGCCAGCAGAGTCTGAGGTTGGAAAATGGCATCAAAGCTGTGAAAAGATCTCTGGACAAGCCAC  
CAAACGCTTACAGGACAAAGAACAGGAAGTGGAGCAGTTGACTAAGGAGTTGCGGCAAGTCAATCTCCAG  
CAGTTCATCCAGCAGACAGGGACAAAAGTTACCGTTTTGCGCAGCGGAGCCATTGAAATAGAGGCCTCAC  
ATGCAGACATTGAAAGGGAGGCACCATTCAGTCTGGTCCCTGAAGCGACCTGGTTTCATCTCGGCAGCT  
CCCCAGTAATCTCCGATTCTGCAGAATCTATCTCATCTGGTTTTAATCCTGAAGGCATATATGTA

**ACGCGT**ACGCGGCCGCTCGAGCAGAAACTCATCTCAGAAGAGGATCTGGCAGCAATGATATCCTGGATT  
ACAAGGATGACGACGATAAGGTTTAA



[View online >](#)

**Protein Sequence:** >RC228331 representing NM\_001164746  
Red=Cloning site Green=Tags(s)

MELKVVVDGVRIVCGVTEVTTTCQEVVIALAQAIGRTGRYTLIEKWRDTERHLAPHENPIISLNKYGQYA  
SDVQLILRRTGPSLSERPTSDSVARIPERTLYRQSLPPLAKLRPQIDKSIKRREPKRKSLTFTGGAKGLM  
DIFGKGKETEFKQKVLNCKTTADELKKLIRLQTEKLQSIKQLESNEIEIRFWEQKYNLNLEEEIVRLE  
QKIKRNDVEIEEEEFWENELQIEQENKQLKDQLQEIRQKITECENKLDYLAQIRTMESGLEAEKLRQRE  
VQEAQVNEEEVKGKIGKVKGEIDIQGGQSLRLENGIKAVERSLGQATKRLQDKEQLEQLTKELRQVNLQ  
QFIQQTGKVTVLPAPPIEIEASHADIEREAPFQSGSLKRPGSSRQLPSNLRILQNPISSGFNPEGIYV

TRTRPLEQKLISEEDLAANDILDYKDDDDKV

**Chromatograms:** [https://cdn.origene.com/chromatograms/mk8058\\_e08.zip](https://cdn.origene.com/chromatograms/mk8058_e08.zip)

**Restriction Sites:** SgfI-MluI

**Cloning Scheme:**



**ACCN:** NM\_001164746

**ORF Size:** 1257 bp

**OTI Disclaimer:** The molecular sequence of this clone aligns with the gene accession number as a point of reference only. However, individual transcript sequences of the same gene can differ through naturally occurring variations (e.g. polymorphisms), each with its own valid existence. This clone is substantially in agreement with the reference, but a complete review of all prevailing variants is recommended prior to use. [More info](#)

**OTI Annotation:** This clone was engineered to express the complete ORF with an expression tag. Expression varies depending on the nature of the gene.

**Components:** The ORF clone is ion-exchange column purified and shipped in a 2D barcoded Matrix tube containing 10ug of transfection-ready, dried plasmid DNA (reconstitute with 100 ul of water).

**Reconstitution Method:**

1. Centrifuge at 5,000xg for 5min.
2. Carefully open the tube and add 100ul of sterile water to dissolve the DNA.
3. Close the tube and incubate for 10 minutes at room temperature.
4. Briefly vortex the tube and then do a quick spin (less than 5000xg) to concentrate the liquid at the bottom.
5. Store the suspended plasmid at -20°C. The DNA is stable for at least one year from date of shipping when stored at -20°C.

**RefSeq:** [NM\\_001164746.2](#)

**RefSeq ORF:** 1260 bp

**Locus ID:** 11228

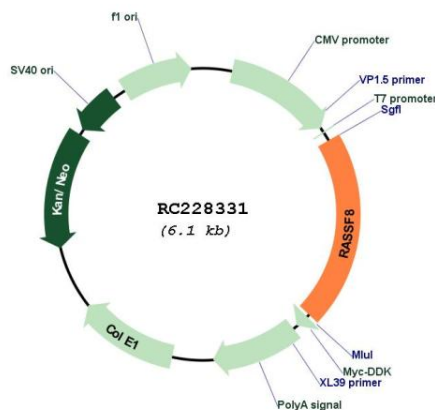
**UniProt ID:** [Q8NHQ8](#)

**Cytogenetics:** 12p12.1

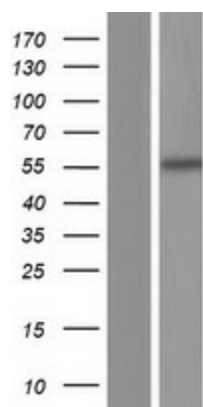
**MW:** 48.1 kDa

**Gene Summary:** This gene encodes a member of the Ras-association domain family (RASSF) of tumor suppressor proteins. This gene is essential for maintaining adherens junction function in epithelial cells and has a role in epithelial cell migration. It is a lung tumor suppressor gene candidate. A chromosomal translocation t(12;22)(p11.2;q13.3) leading to the fusion of this gene and the FBLN1 gene is found in a complex type of synpolydactyly. Multiple alternatively spliced transcript variants encoding different isoforms have been found for this gene. [provided by RefSeq, May 2011]

**Product images:**



Circular map for RC228331



Western blot validation of overexpression lysate (Cat# [LY431359]) using anti-DDK antibody (Cat# [TA50011-100]). Left: Cell lysates from untransfected HEK293T cells; Right: Cell lysates from HEK293T cells transfected with RC228331 using transfection reagent MegaTran 2.0 (Cat# [TT210002]).