

## Product datasheet for RC228330

### Gasdermin like (GSDMB) (NM\_001165958) Human Tagged ORF Clone

#### Product data:

Product Type:	Expression Plasmids
Product Name:	Gasdermin like (GSDMB) (NM_001165958) Human Tagged ORF Clone
Tag:	Myc-DDK
Symbol:	Gasdermin like
Synonyms:	GSDMB-1; GSDML; PP4052; PRO2521
Mammalian Cell Selection:	Neomycin
Vector:	pCMV6-Entry (PS100001)
E. coli Selection:	Kanamycin (25 ug/mL)
ORF Nucleotide Sequence:	>RC228330 representing NM_001165958 Red=Cloning site Blue=ORF Green=Tags(s)

TTTTGTAATACGACTCACTATAGGGCGGCCGGAATTCGTCGACTGGATCCGGTACCGAGGAGATCTGCC  
GCC**CGATCGCC**

ATGTTCCAGCGTATTTGAGGAAATCACAGAATTGTAGTTAAGGAGATGGATGCTGGAGGGGATGATTG  
CCGTTAGAAGCCTTGTGATGCTGATAGATTCCGCTGCTCCATCTGGTGGGGGAGAAGAGAAGCTTTCTT  
TGGATGCCGCACTACACAACAGGCCTCACCTGATGGACATTCTGGACACAGATGGGACAAGTGGTTA  
GATGAAGTGGATTCTGGGCTCAAGGTCAAAGGCTGAGTTTCAAATTCTGGATAATGTAGACTCAACGG  
GAGAGTTGATAGTGAGATTACCCAAAGAAATAACAATTCAGGCAGTTTCCAGGGCTTCCACCATCAGAA  
AATCAAGATATCGGAGAACCGGATATCCAGCAGTATCTGGCTACCTTGAAAACAGGAAGCTGAAGAGG  
GAACTACCTTTTCATTCCGATCAATTAATACGAGAGAAAACCTGTATCTGGTGACAGAAAACCTGGAGA  
CGGTAAAGGAGGAAACCTGAAAAGCGACCGGCAATATAAATTTGGAGCCAGATCTCTCAGGGCCATCT  
CAGCTATAAACACAAGGGCCAAAGGGAAGTGACCATCCCCCAAATCGGGTCTGAGCTATCGAGTAAAG  
CAGCTTGTCTTCCCAACAAGGAGACGATGAATATTCATTTTCAGGGGCAAAAACAAATCCTTTCCAGAAG  
AGAAGGATGGTGCTTCATCTGTTTAGGAAAGTCTTTGGGTTCCGAGGATTCAGAAACATGAAGGAGAA  
GTTGGAGGACATGGAGAGTGTCTCAAGGACCTGACAGAGGAGAAGAGAAAAGATGTGCTAAACTCCCTC  
GCTAAGTGCCTCGCAAGGAGGATATTCGGCAGGATCTAGAGCAAAGAGTATCTGAGGCTCTGATTTCCG  
GGGAGCTACACATGGAGGACCCAGACAAGCCTCTCCTAAGCAGCCTTTTTAATGCTGCTGGGGTCTTGGT  
AGAAGCGCGTGCAAAAGCCATTCTGGACTTCTGGATGCCTGTAGAGCTGTCTGAAGAGCAGCAGTTT  
GTGGCTGAGGCCCTGGAGAAGGGGACCTTCTCTGTTGAAGGACCAGGTGAAATCTGTGATGGAGCAGA  
ACTGGGATGAGCTGGCCAGCAGTCTCTGACATGGACTATGACCCTGAGGCACGAATCTCTGTGCGCT  
GTATGTTGTTGTCTATCTCTGCTGGAGCTGGCTGAGGGGCTACCTCTGTCTCTTCC

**ACGCGT**ACGCGGCCGCTCGAGCAGAAAACCTCATCTCAGAAGAGGATCTGGCAGCAAATGATATCCTGGATT  
ACAAGGATGACGACGATAAGGTTTAA



[View online »](#)

**Protein Sequence:** >RC228330 representing NM\_001165958  
Red=Cloning site Green=Tags(s)

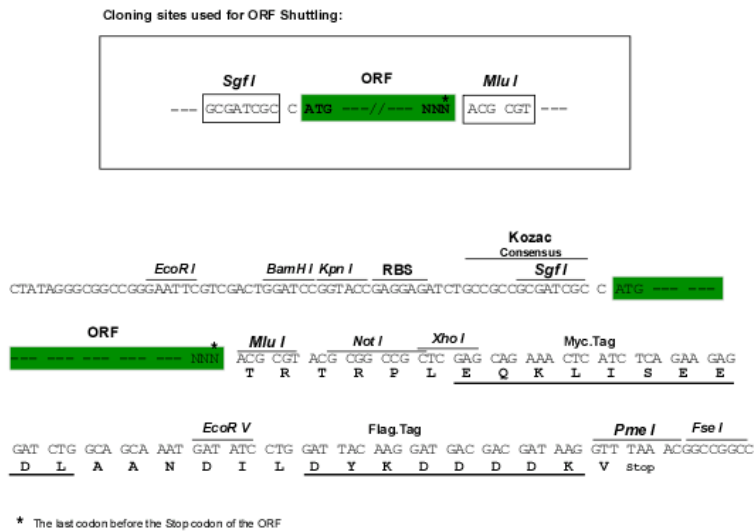
MFSVFEEITRIVVKEMDAGGDMIAVRSLVDADRFRFCFHLVGEKRTFFGCRHYTTGLTMDILDTDGDKWL  
 DELDSSLQGGKAEFQILDNVDSTGELIVRLPKEITISGSFQGFHHQKIKISENRISQOYLATLENRKLKR  
 ELPPFSFRSINTRENLYLVTETLETVKEETLKSDRQYKFSQISQGHLSYKHKGQREVTIIPNRVLSYRVK  
 QLVFVNKETMNIHFRGKTKSFPEEKDGASSCLGKSLGSEDSRNMKEKLEDMESVLKDLTEEKRDVLSL  
 AKCLGKEDIRQDLEQRVSEVLISGELHMEPPDKPLLSSLFNAAGVLVEARAKAILEDLALLELEEQQF  
 VAEALEKGTLLPKDQVKSVMQNWDELASSPPDMDYDPEARILCALYVVVSILLELAEGPTSVSS

TRTRPLEQKLISEEDLAANDILDYKDDDDKV

**Chromatograms:** [https://cdn.origene.com/chromatograms/mk8039\\_c07.zip](https://cdn.origene.com/chromatograms/mk8039_c07.zip)

**Restriction Sites:** SgfI-MluI

**Cloning Scheme:**



**ACCN:** NM\_001165958

**ORF Size:** 1248 bp

**OTI Disclaimer:** The molecular sequence of this clone aligns with the gene accession number as a point of reference only. However, individual transcript sequences of the same gene can differ through naturally occurring variations (e.g. polymorphisms), each with its own valid existence. This clone is substantially in agreement with the reference, but a complete review of all prevailing variants is recommended prior to use. [More info](#)

**OTI Annotation:** This clone was engineered to express the complete ORF with an expression tag. Expression varies depending on the nature of the gene.

**Components:** The ORF clone is ion-exchange column purified and shipped in a 2D barcoded Matrix tube containing 10ug of transfection-ready, dried plasmid DNA (reconstitute with 100 ul of water).

**Reconstitution Method:**

1. Centrifuge at 5,000xg for 5min.
2. Carefully open the tube and add 100ul of sterile water to dissolve the DNA.
3. Close the tube and incubate for 10 minutes at room temperature.
4. Briefly vortex the tube and then do a quick spin (less than 5000xg) to concentrate the liquid at the bottom.
5. Store the suspended plasmid at -20°C. The DNA is stable for at least one year from date of shipping when stored at -20°C.

**RefSeq:** [NM\\_001165958.1](#), [NP\\_001159430.1](#)

**RefSeq ORF:** 1251 bp

**Locus ID:** 55876

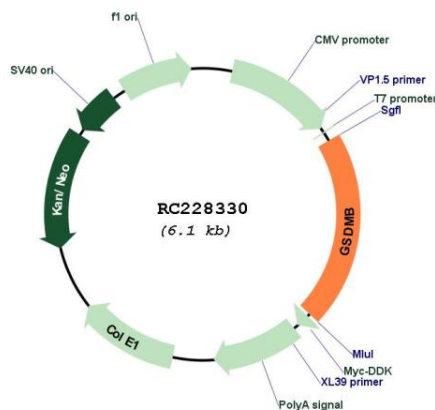
**UniProt ID:** [Q8TAX9](#)

**Cytogenetics:** 17q21.1

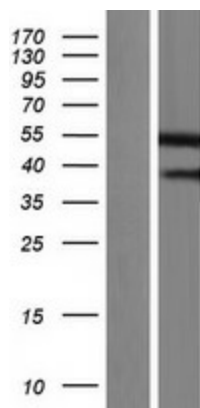
**MW:** 47.2 kDa

**Gene Summary:** This gene encodes a member of the gasdermin-domain containing protein family. Other gasdermin-family genes are implicated in the regulation of apoptosis in epithelial cells, and are linked to cancer. Alternative splicing and the use of alternative promoters results in multiple transcript variants. Additional variants have been described, but they are candidates for nonsense-mediated mRNA decay (NMD) and are unlikely to be protein-coding. [provided by RefSeq, Nov 2016]

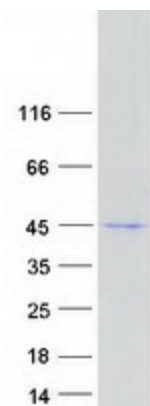
## Product images:



Circular map for RC228330



Western blot validation of overexpression lysate (Cat# [LY431358]) using anti-DDK antibody (Cat# [TA50011-100]). Left: Cell lysates from untransfected HEK293T cells; Right: Cell lysates from HEK293T cells transfected with RC228330 using transfection reagent MegaTran 2.0 (Cat# [TT210002]).



Coomassie blue staining of purified GSDMB protein (Cat# [TP328330]). The protein was produced from HEK293T cells transfected with GSDMB cDNA clone (Cat# RC228330) using MegaTran 2.0 (Cat# [TT210002]).