

## Product datasheet for **RC228329**

### GRAMD2B (NM\_001146322) Human Tagged ORF Clone

#### Product data:

**Product Type:** Expression Plasmids  
**Product Name:** GRAMD2B (NM\_001146322) Human Tagged ORF Clone  
**Tag:** Myc-DDK  
**Symbol:** GRAMD2B  
**Synonyms:** GRAMD3; NS3TP2  
**Mammalian Cell Selection:** Neomycin  
**Vector:** pCMV6-Entry (PS100001)  
**E. coli Selection:** Kanamycin (25 ug/mL)  
**ORF Nucleotide Sequence:** >RC228329 representing NM\_001146322  
**Red=Cloning site Blue=ORF Green=Tags(s)**

TTTTGTAATACGACTCACTATAGGGCGGCCGGAATTCGTCGACTGGATCCGGTACCGAGGAGATCTGCC  
GCC**CGGATCGCC**

ATGTCTAAAGTGAAGCGGTTTCTTTCTTCTCAGCTCAGAGGCTGAGAATGGTGTGGAGGAGAAAAAGA  
AAGCCTGCAGGTCGCCAACAGCCCAATCCCCTACCCCATCTGTGGAGGCGGACTCCCCAGACCAGAAGAA  
AATCATTAGCCTATGGTCAAAATCCAGTTTGGTGCCTCTTAGCAAGTGATAAGAACGACTGTAAA  
ACAGAAAGCAAAAATGACCCTAAGACTGAAAGAAAAAAGTCTTCATCTCCAGCCAGTACAAGGCCAATA  
TGCACTTTCACAAGTTGTTTCTTAGTGTCCAACGGAGGAACCACTGAAGCAAAGCTTTACCTGTGCTCT  
ACAGAAAGAAATACTATACCAAGGAAAGCTCTTTGTATCAGAAAAGTGGATTTGTTTTCATTCCAAAGTC  
TTTGAAAAGACACAAAGATCTCTATTCCAGCTTCTCGGTAACCCCTAATAAAGAAAACCAAACTGCTC  
TTCTAGTGCCAAACGCCCTGATCATAGCAACAGTCACAGACAGGTACATATTTGTCTCCTTACTCTCCAG  
AGATTCAACTTACAACTACTAAAATCTGTGTGGACACTTAGAAAATACAAGTGTGGTAACAGTCCC  
AATCCATCTTCTGCTGAAAACAGTTTCCGAGCAGACCCGCCCTTCATCTCTGCCTCTGGATTTCAATGATG  
AATTCTCAGATCTGGATGGAGTGGTCAACAAAGAAGGCAAGACATGGAAGGATATAGCAGTTCTGGTTC  
TCAAACCTCTGAATCTGAGAATCTCGAGATTTCCATGCGACAGAATCCCAAACAGTTCTGAATGTCTCC  
AAGGGAGAAGCAAGCCAACTCGGGCAGATGCCCATGTGAACAGAGTACCTGAAGGAAAAGCCAAGAGTC  
TCCTGTACAGGGTCTGTGAGAACTGTTGGAATCTTACATAAAGTCAAGTCTCAGAAATGTCGATGCT  
TCACCATATTCTATATTCTATGCAATTGTTGTCTGTGCACTAATCATCTCGACCTTCTACATGAGATAC  
AGAATTAATACTCTGGAGGAGCAGCTGGGGTACTAACCTCCATTGTGGACACCCATAATACTGAACAGG  
CAGCACCATCTGGCCTGAGGTCACAAGTACAATTCAATGTGGAGTTCTCTGTCAAGAGCTTACAGCTAA  
CATAGTGAATTAGAAAAGATACAAAATAAATTACAGAAGTTGCTTGAGAATGGTGAC

**ACGCGT**ACGCGGCCGCTCGAGCAGAACTCATCTCAGAAGAGGATCTGGCAGCAATGATATCTGGATT  
ACAAGGATGACGACGATAAGGTTTAA



[View online >](#)

**Protein Sequence:** >RC228329 representing NM\_001146322  
Red=Cloning site Green=Tags(s)

MSKVKRFPPFFSSEAENGVEEKKKACRSPTAQSPTPSVEADSPDQKKIISLWSKSSFDFGASLASDKNCK  
 TESKNDPKTERKKSSSSSQYKANMHFHLFLSVPTEEPLKQSFTCALQKEILYQGLFVSENWICFHSKV  
 FGKDTKISIPAFSVTLIKKTKTALLVPNALIIATVTDRIYFVSLLSRDSTYKLLKSVCGHLENTSVGNP  
 NPSSAENSFRADRPSSLPLDFNDEFSDLGQVQRRQDMEGYSSSGSQTPESENSRDFHATESQTVLNVS  
 KGKAKPTRADAHVNRVPEGKAKSLPVQGLSETVGI LHKVKSQKCPMLHHILIFYAIVVCALIIISTFYMRY  
 RINTLEEQLGLLTSIVDTHNTEQAAPSGRLRSQVQFNVEVLCQELTANIVKLEKIQNLLQKLENGD

TRTRPLEQKLISEEDLAANDILDYKDDDDKV

**Chromatograms:** [https://cdn.origene.com/chromatograms/mk8058\\_d02.zip](https://cdn.origene.com/chromatograms/mk8058_d02.zip)

**Restriction Sites:** SgfI-MluI

**Cloning Scheme:**



**ACCN:** NM\_001146322

**ORF Size:** 1248 bp

**OTI Disclaimer:** The molecular sequence of this clone aligns with the gene accession number as a point of reference only. However, individual transcript sequences of the same gene can differ through naturally occurring variations (e.g. polymorphisms), each with its own valid existence. This clone is substantially in agreement with the reference, but a complete review of all prevailing variants is recommended prior to use. [More info](#)

**OTI Annotation:** This clone was engineered to express the complete ORF with an expression tag. Expression varies depending on the nature of the gene.

**Components:** The ORF clone is ion-exchange column purified and shipped in a 2D barcoded Matrix tube containing 10ug of transfection-ready, dried plasmid DNA (reconstitute with 100 ul of water).

**Reconstitution Method:**

1. Centrifuge at 5,000xg for 5min.
2. Carefully open the tube and add 100ul of sterile water to dissolve the DNA.
3. Close the tube and incubate for 10 minutes at room temperature.
4. Briefly vortex the tube and then do a quick spin (less than 5000xg) to concentrate the liquid at the bottom.
5. Store the suspended plasmid at -20°C. The DNA is stable for at least one year from date of shipping when stored at -20°C.

**RefSeq:** [NM\\_001146322.3](#)

**RefSeq ORF:** 1251 bp

**Locus ID:** 65983

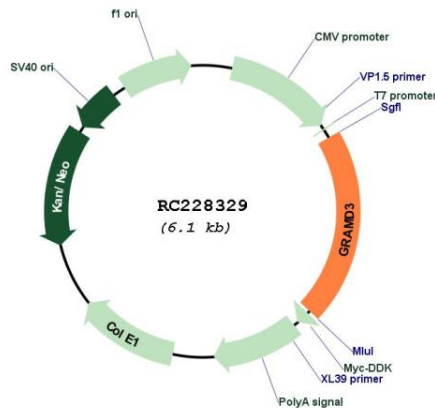
**UniProt ID:** [Q96HH9](#)

**Cytogenetics:** 5q23.2

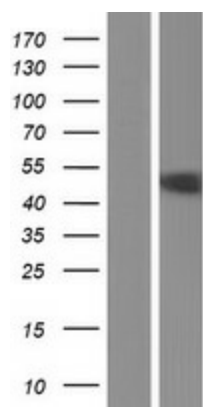
**Protein Families:** Transmembrane

**MW:** 46.1 kDa

### Product images:



Circular map for RC228329



Western blot validation of overexpression lysate (Cat# [LY431357]) using anti-DDK antibody (Cat# [TA50011-100]). Left: Cell lysates from untransfected HEK293T cells; Right: Cell lysates from HEK293T cells transfected with RC228329 using transfection reagent MegaTran 2.0 (Cat# [TT210002]).