

Product datasheet for **RC228328**

P2X6 (P2RX6) (NM_001159554) Human Tagged ORF Clone

Product data:

Product Type:	Expression Plasmids
Product Name:	P2X6 (P2RX6) (NM_001159554) Human Tagged ORF Clone
Tag:	Myc-DDK
Symbol:	P2X6
Synonyms:	P2RXL1; P2X6; P2XM
Mammalian Cell Selection:	Neomycin
Vector:	pCMV6-Entry (PS100001)
E. coli Selection:	Kanamycin (25 ug/mL)
ORF Nucleotide Sequence:	>RC228328 representing NM_001159554 Red=Cloning site Blue=ORF Green=Tags(s)

TTTTGTAATACGACTCACTATAGGGCGGCCGGAATTCGTCGACTGGATCCGGTACCGAGGAGATCTGCC
GCC**CGATCGCC**

ATGTGCCCGCAGCTAGCAGGAGCTGGCAGCATGGGCTCCCGAGGGCTACGACAGGCTGGGGCTTCTGG
ATTATAAGACGGAGAAGTGGGCTCTCCTCGCCAAAAAGGCTACCAGGAGCGGGACCTGGAACCCAGTT
TTCCATCATCACAAACTCAAAGGGTTCCGTCCTCAGATCAAGGAGCTTGGAAACCGGCTGTGGGAT
GTGGCCGACTTCGTGAAGCCACCTCAGGGAGAGAAGCTGTTCTTCTTGGTGACCAACTTCCTTGTGACGC
CAGCCCAAGTTCAGGGCAGATGCCAGAGCACCCGTCCTCCACTGGCTAACTGCTGGTGCAGCAGGA
CTGCCCGAAGGGGAGGGAGGCACACAGCCACGGTGTAAAAACAGGCCAGTGTGTGGTGTCAATGGG
ACCCACAGGACCTGTGAGATCTGGAGTTGGTGCCCGTGGAGAGTGGCGTTGTGCCCTCGAGGCCCTGC
TGGCCAGGCCAGAACTTCACACTGTTTCATCAAAAACACAGTCACCTTCAGCAAGTTCAACTTCTCTAA
GTCCAATGCCTTGGAGACCTGGGACCCACCTATTTAAGCACTGCCGCTATGAACCACAATTCAGCCCC
TACTGTCCCGTGTTCGCATTGGGACCTCGTGGCCAAGGCTGGAGGGACCTTCGAGGACCTGGCGTTGC
TGGGTGGCTCTGTAGGCATCAGAGTTCCTGGGATTGTGACCTGGACACCGGGGACTCTGGCTGTGGCC
TCACTACTCCTTCAGCTGCAGGAGAAGAGCTACAACCTCAGGACAGCCACTCACTGGTGGGAGCAACCG
GGTGTGGAGGCCCGCACCTGCTCAAGCTCTATGGAATCCGCTTCGACATCCTCGTACCCGGCAGGCAG
GGAAGTTCGGGCTCATCCCACGGCCGTCACTGGGCACCGGGCAGCTTGGCTGGGCGTGGTCACTT
TTTCTGTGACCTGCTACTGCTGTATGTGGATAGAGAAGCCATTCTACTGGAGGACAAAGTATGAGGAG
GCCAAGGCCCGAAAGCAACCGCAACTCTGTGTGGAGGGAGCTGGCCCTGCATCCCAAGCCCGACTGG
CCGAGTGCCTCAGACGGAGCTCAGCACCTGCACCCACGGCCACTGCTGCTGGGAGTCAGACACAGACACC
AGGATGGCCCTGTCCAAGTTCTGACACCCACTTGCCAACCCATTCCGGGAGCCTG

ACGCGTACGCGGCCGCTCGAGCAGAACTCATCTCAGAAGAGGATCTGGCAGCAATGATATCCTGGATT
ACAAGGATGACGACGATAAGGTTTAA



[View online »](#)

Protein Sequence: >RC228328 representing NM_001159554

Red=Cloning site Green=Tags(s)

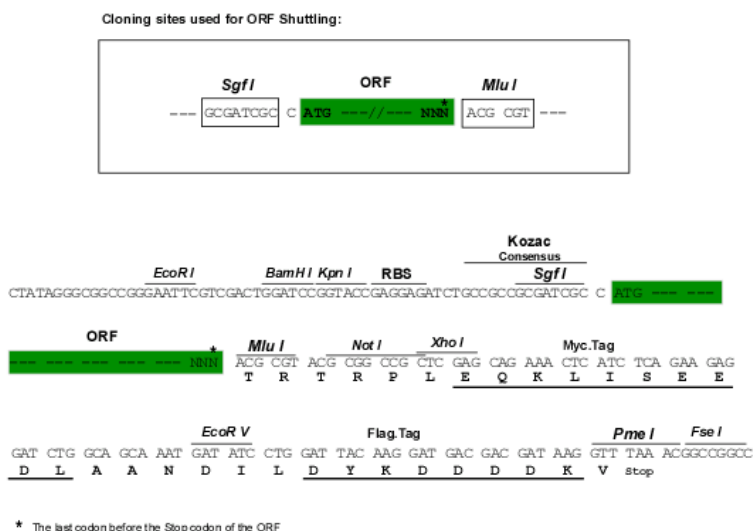
MCPQLAGAGSMGSPGATTGWLLDYKTEK WALLAKKGYQERDLEPQFSIIITKLKGVSVTQIKELGNRLWD
 VADFVKPPQGENVFFLVNFLVTPAQVQGRCEHPSVPLANCWVDEDCPEGEGGTHSHGVKTGCQVVFNG
 THRTCEIWSWCPVESGVVPSRPLLAQAQNF TLF IKNTVTF SKFNF SKSNALETWDPTYFKHCRYEPQFSP
 YCPVFRIGDLVAKAGGTFEDLALLGGSVGI RVHWDCDLDTGDSGCWPHYSFQLQEKSYNFR TATHWWEQP
 GVEARTLLKLYGIRFDILVTGQAGKFGLIPTAVTLGTGAAWLGVVTF FCDLLLLYVDREAHFYWRKYEE
 AKAPKATANSVWRELALASQARLAECLRRSSAPAPTATAAGSQTQTPGWPCPSSDTHLPTHSGSL

TRTRPLEQKLISEEDLAANDILDYKDDDDKV

Chromatograms: https://cdn.origene.com/chromatograms/mk8058_c12.zip

Restriction Sites: SgfI-MluI

Cloning Scheme:



ACCN: NM_001159554

ORF Size: 1245 bp

OTI Disclaimer: The molecular sequence of this clone aligns with the gene accession number as a point of reference only. However, individual transcript sequences of the same gene can differ through naturally occurring variations (e.g. polymorphisms), each with its own valid existence. This clone is substantially in agreement with the reference, but a complete review of all prevailing variants is recommended prior to use. [More info](#)

OTI Annotation: This clone was engineered to express the complete ORF with an expression tag. Expression varies depending on the nature of the gene.

Components: The ORF clone is ion-exchange column purified and shipped in a 2D barcoded Matrix tube containing 10ug of transfection-ready, dried plasmid DNA (reconstitute with 100 ul of water).

Reconstitution Method:

1. Centrifuge at 5,000xg for 5min.
2. Carefully open the tube and add 100ul of sterile water to dissolve the DNA.
3. Close the tube and incubate for 10 minutes at room temperature.
4. Briefly vortex the tube and then do a quick spin (less than 5000xg) to concentrate the liquid at the bottom.
5. Store the suspended plasmid at -20°C. The DNA is stable for at least one year from date of shipping when stored at -20°C.

RefSeq: [NM_001159554.1](#), [NP_001153026.1](#)

RefSeq ORF: 1248 bp

Locus ID: 9127

UniProt ID: [O15547](#)

Cytogenetics: 22q11.21

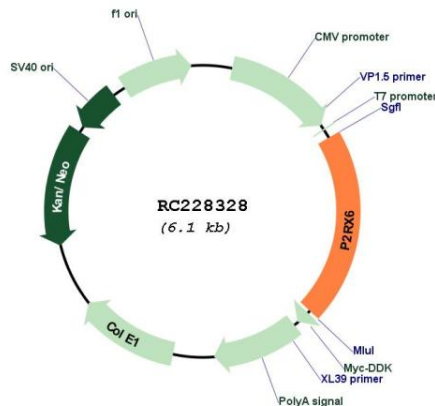
Protein Families: Druggable Genome, Ion Channels: ATP Receptors, Transmembrane

Protein Pathways: Calcium signaling pathway, Neuroactive ligand-receptor interaction

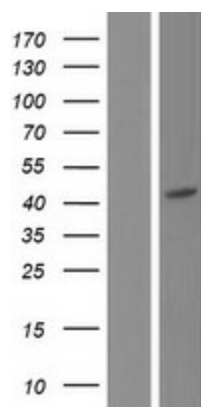
MW: 45.6 kDa

Gene Summary: The protein encoded by this gene belongs to the family of P2X receptors, which are ATP-gated ion channels and mediate rapid and selective permeability to cations. This gene is predominantly expressed in skeletal muscle, and regulated by p53. The encoded protein is associated with VE-cadherin at the adherens junctions of human umbilical vein endothelial cells. Alternative splicing results in multiple transcript variants. A related pseudogene, which is also located on chromosome 22, has been identified. [provided by RefSeq, Apr 2009]

Product images:



Circular map for RC228328



Western blot validation of overexpression lysate (Cat# [LY431356]) using anti-DDK antibody (Cat# [TA50011-100]). Left: Cell lysates from untransfected HEK293T cells; Right: Cell lysates from HEK293T cells transfected with RC228328 using transfection reagent MegaTran 2.0 (Cat# [TT210002]).